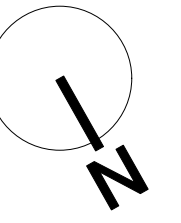






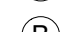







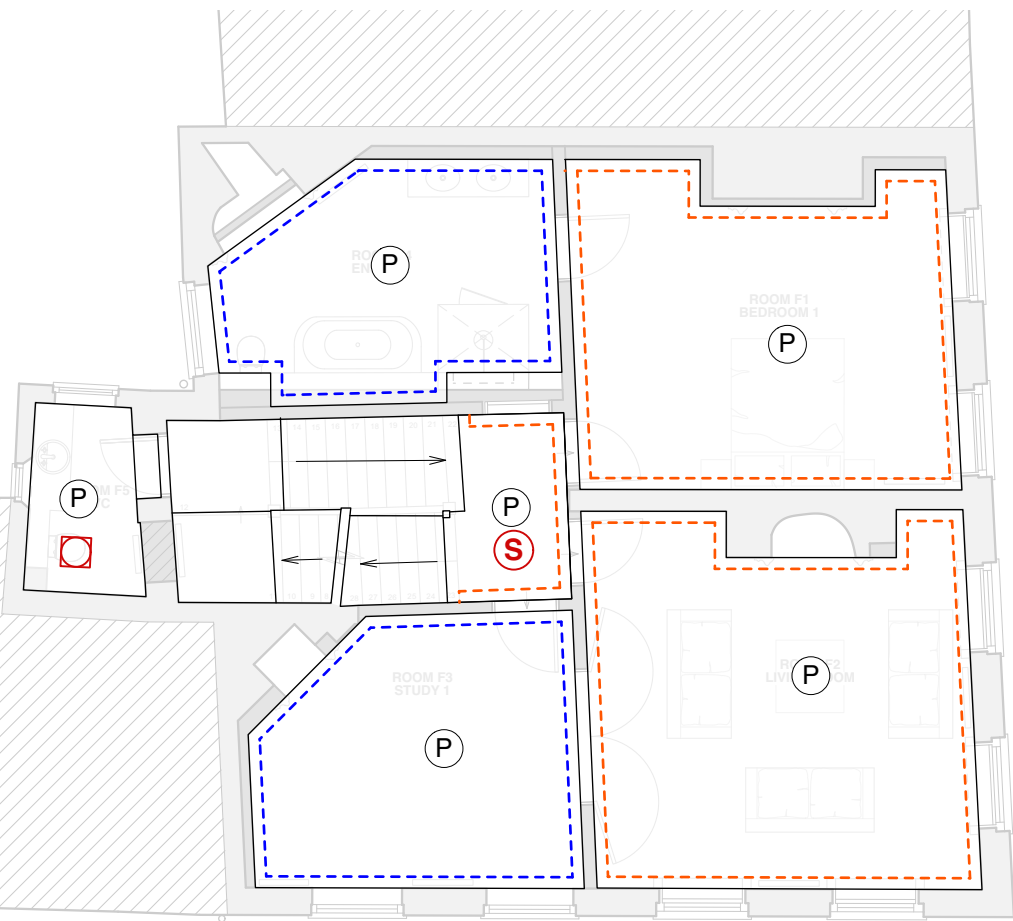
# CEILING STRATEGY DRAWING

0 2 4 6 8 10 M



**CEILING STRATEGY KEY**

-  Ventilation: cooker hood
-  Ventilation: Ceiling mounted outlet
-  Cornice: Large cornice to panelled areas - see inset below
-  Cornice: Large cornice to panelled areas - see inset below
-  Lighting: Pendant fitting
-  Lighting: Spotlight
-  Lighting: Bulkhead
-  Lighting: Flush Ceiling Light
-  Fire system: Smoke Detector
-  Fire system : Heat Detector
-  Ceiling to have 30mm resilient bar under joist to allow for heating pipework to cross contrary to joists
-  Ceiling void of 125mm to allow for services and ventilation ductwork

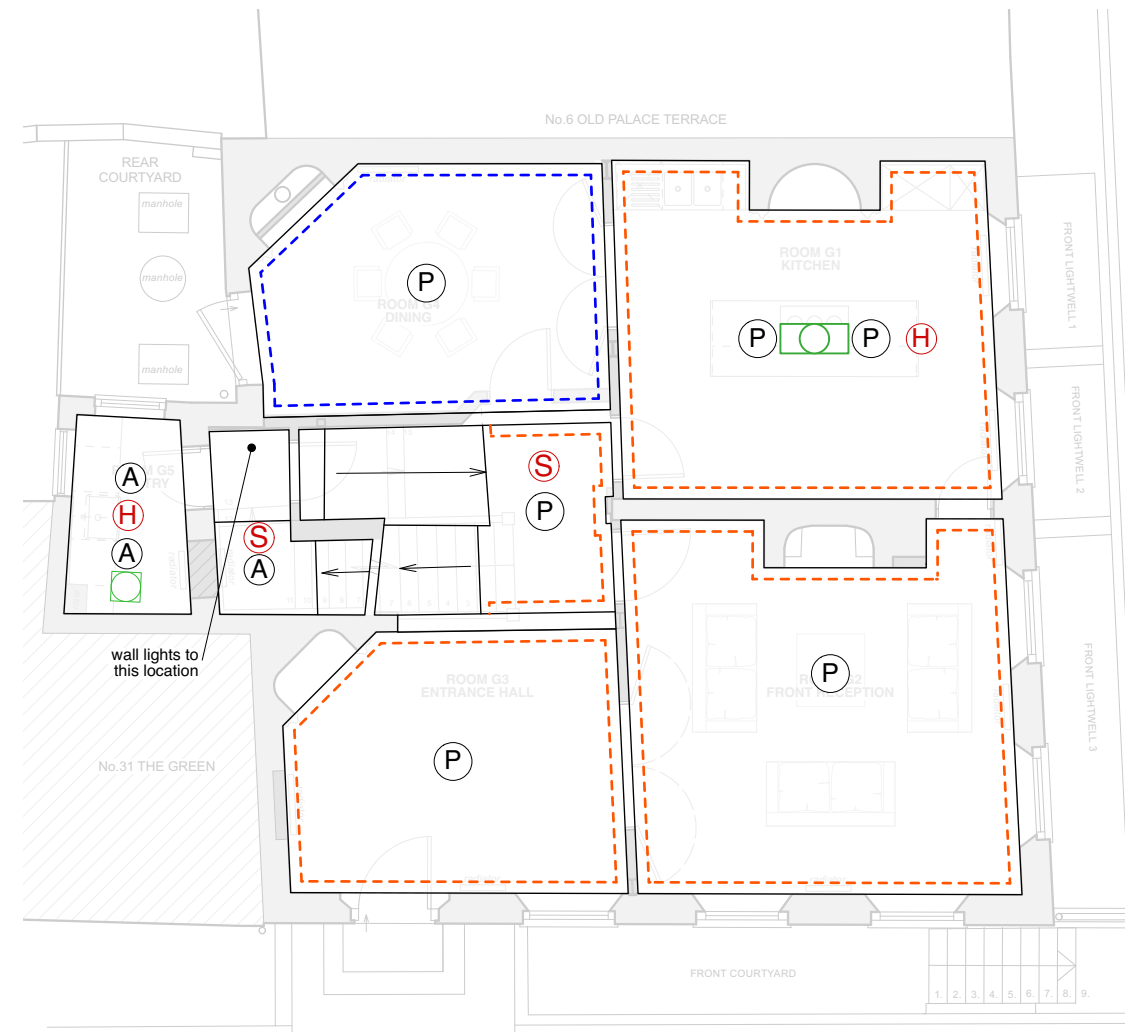
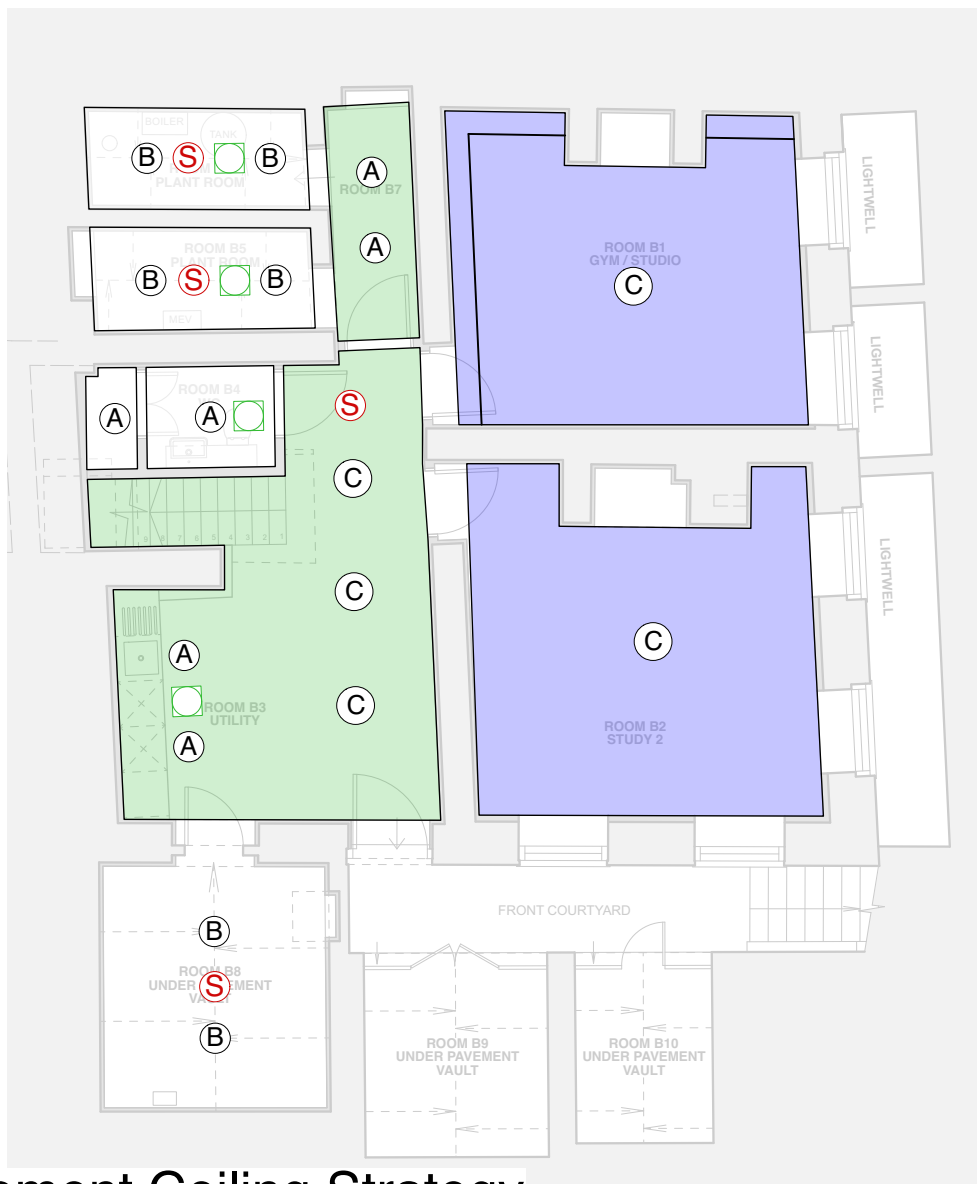


First Floor Ceiling Strategy

Second Floor Ceiling Strategy

**Cornice for larger rooms to ground and first floor**  
Scale 1:5  
Drawn from cornice on site by Goater Jones Architects

**Cornice for smaller rooms**  
Scale 1:5  
Drawn from cornice on site by Goater Jones Architects



Basement Ceiling Strategy

Ground Floor Ceiling Strategy

REVISION SUMMARY      DATE      REVISION



First Floor, 43-45 Park Street  
Bristol  
BS1 5NL  
mail@shuarchitects.uk  
0117 248 2688

Project number      Project  
2117      32 The Green  
Richmond  
TW9 1LX

Status  
**PLANNING**  
Use figured dimensions only. Only build from drawing marked for 'Construction'.

Drawing Title  
**STRATEGY DRAWINGS**  
Reflected Ceiling Plan & Strategy

Drawn by  
**CH**  
Date  
Nov 2024

Scale  
1:100@A2

Drawing number  
**242**

Revision