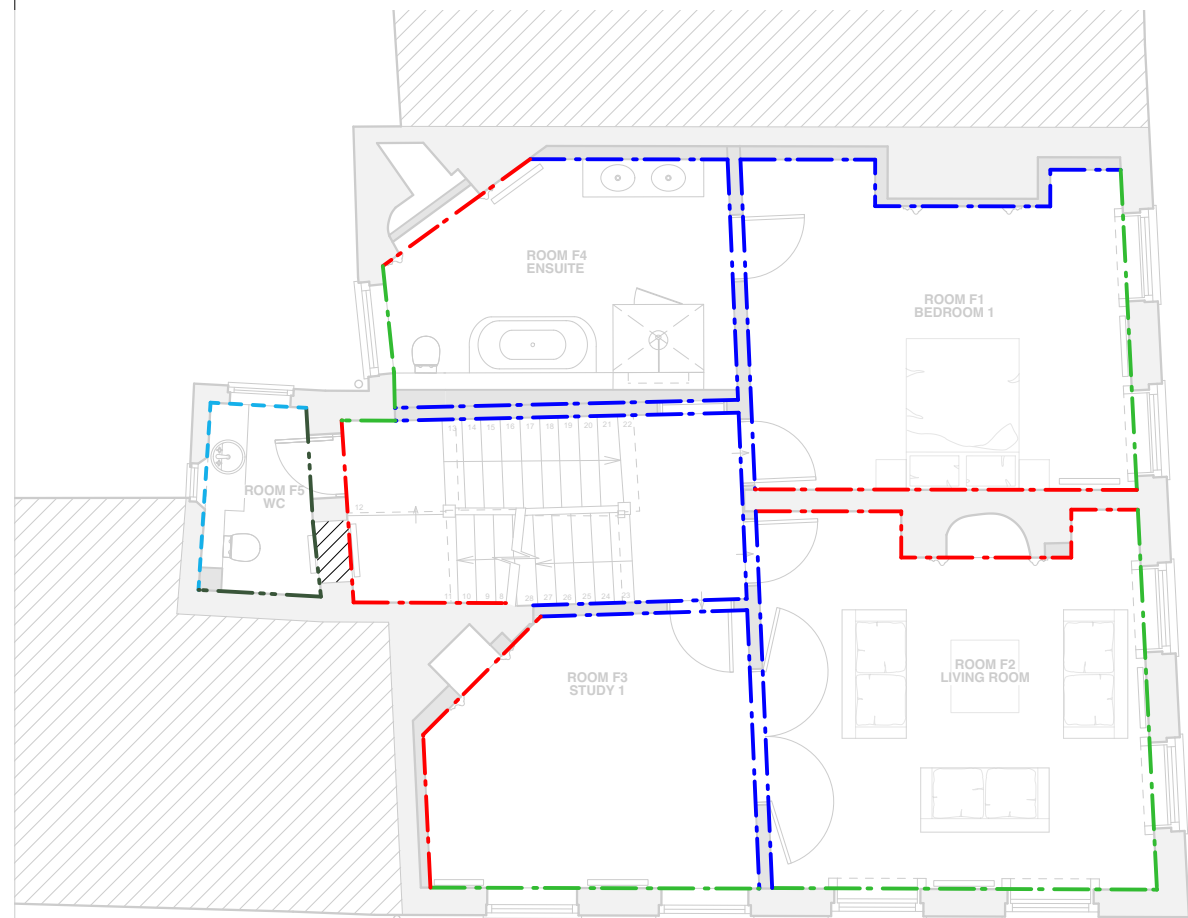
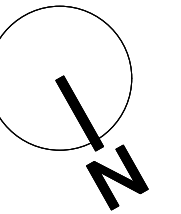
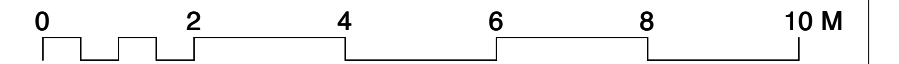
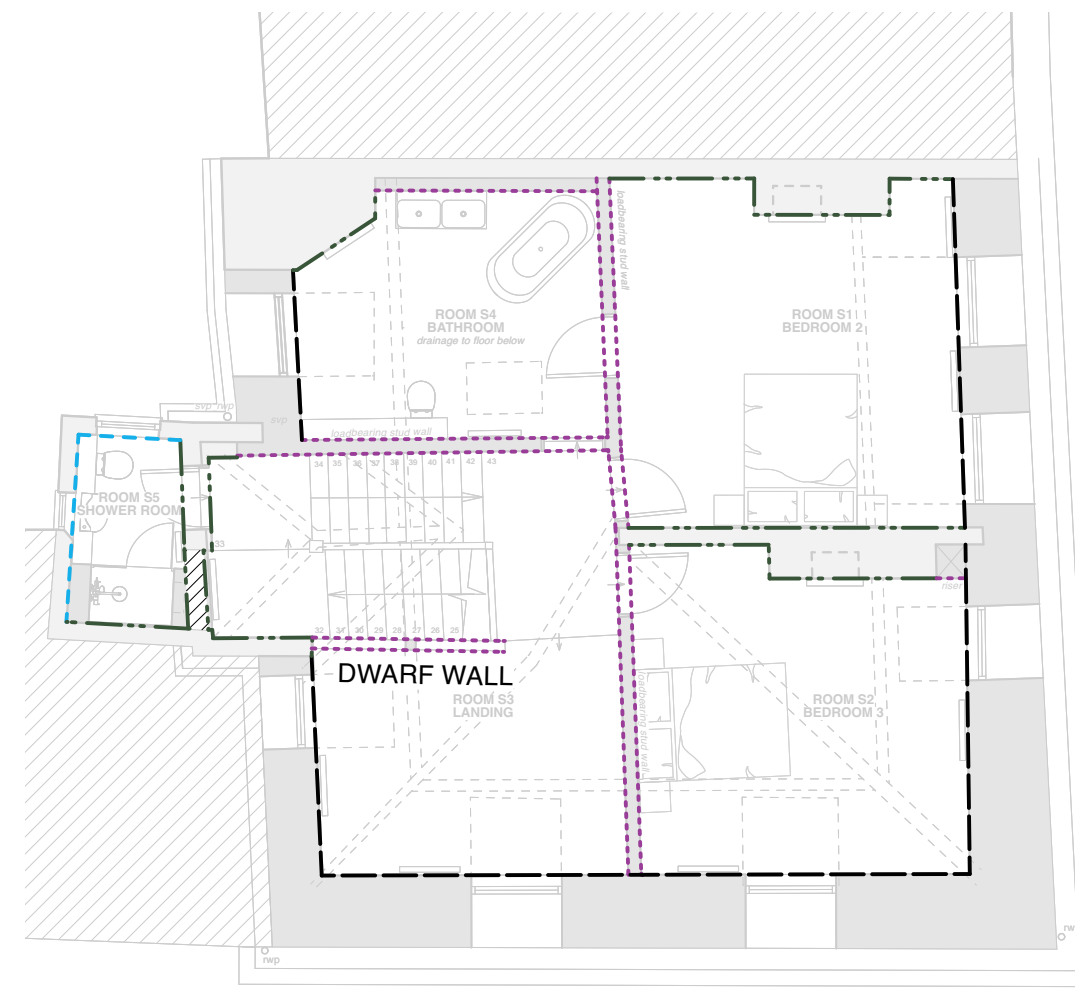


WALL STRATEGY DRAWING



First Floor Ceiling Strategy



Second Floor Ceiling Strategy

WALL STRATEGY KEY

- - - - - Wall type 1:
Heritage existing & replaced
panelling to external masonry
wall - refer to dwg 231
- - - - - Wall type 2:
Heritage existing & replaced
panelling to internal masonry
wall - refer to dwg 232
- - - - - Wall type 3:
Heritage existing & replaced
panelling to internal timber stud
wall - refer to dwg 232
- - - - - Wall type 4:
Fixit 222 insulating lime plaster to
external masonry wall with
breathable paint finish - Clay or
silicate paint
- - - - - Wall type 5:
Lime plaster to internal masonry
wall with breathable paint finish -
Clay or silicate paint
- - - - - Wall type 6:
Insulated roof / wall detail
- refer to dwg 235 & 236
- - - - - Wall type 7:
12.5mm plasterboard (moisture
resistant to bathrooms) either side
of a timber stud with 100mm
mineral wool between studs
- - - - - Wall type 8:
Cavity drainage membrane to
internal walls
- refer to dwg 237
- - - - - Wall type 9:
Cavity drainage membrane with
insulation to external walls
- refer to dwg 237
- / / / / / Wall type 10:
New masonry infill wall



Basement Ceiling Strategy



Ground Floor Ceiling Strategy

REVISION SUMMARY DATE REVISION



First Floor, 43-45 Park Street
Bristol
BS1 5NL
mail@shuarchitects.uk
0117 248 2688

Project number Project
2117 **32 The Green**
Richmond
TW9 1LX

Status
PLANNING
Use figured dimensions only. Only build
from drawing marked for 'Construction'.

Drawing Title
STRATEGY DRAWINGS
Wall Strategy

Drawn by
CH
Date
Nov 2024

Scale
1:100@A2

Drawing number
244

Revision