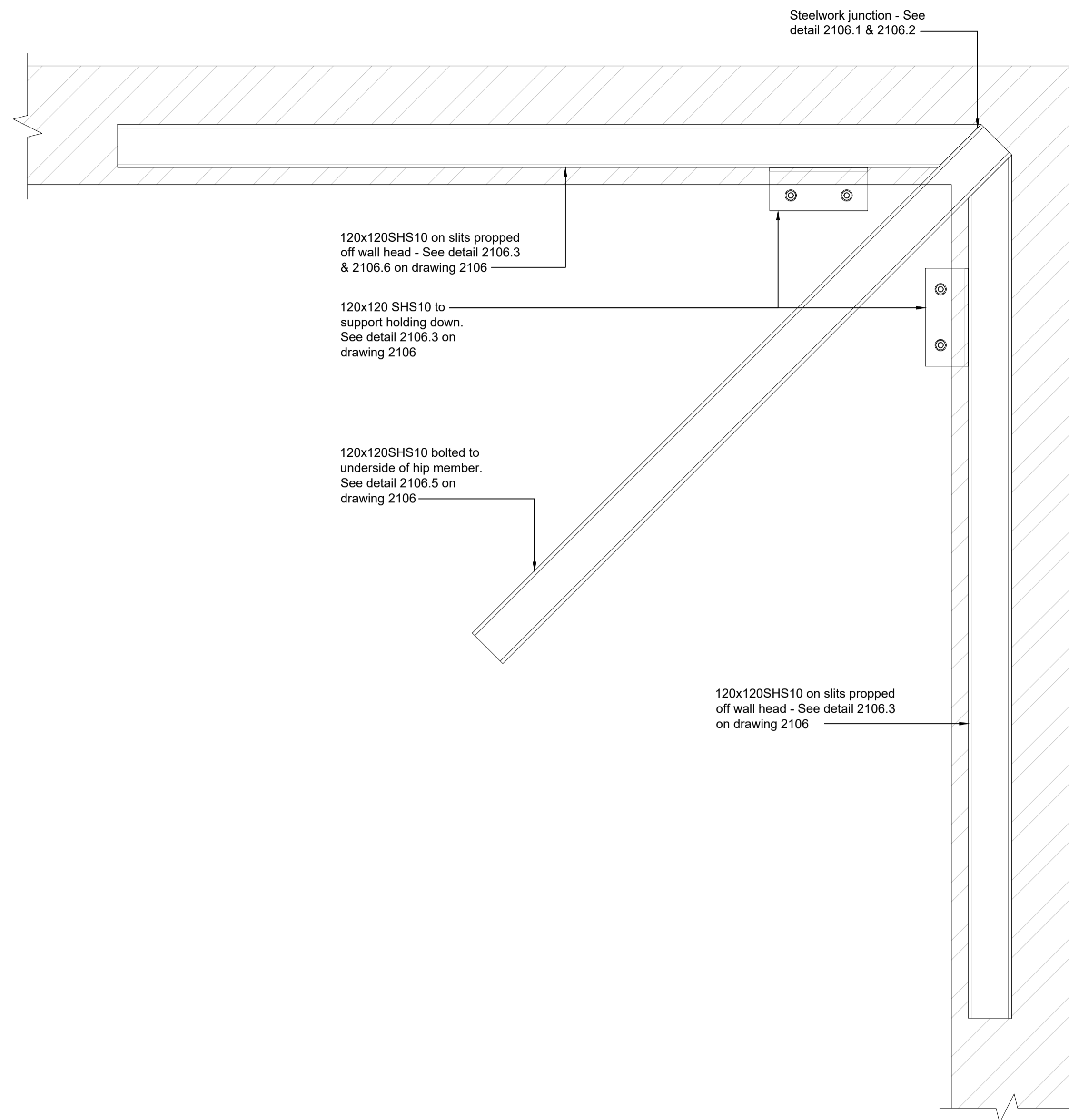
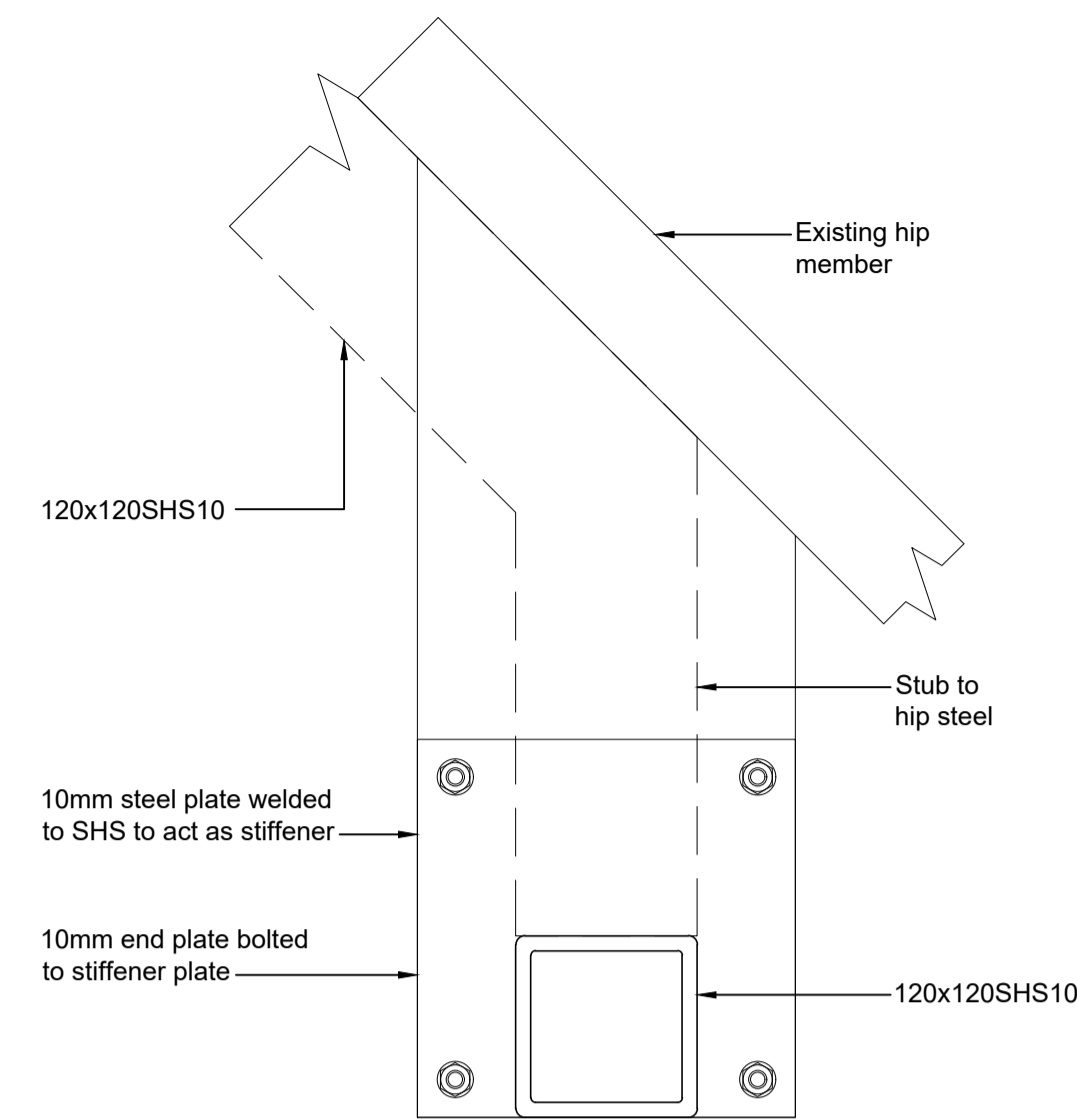


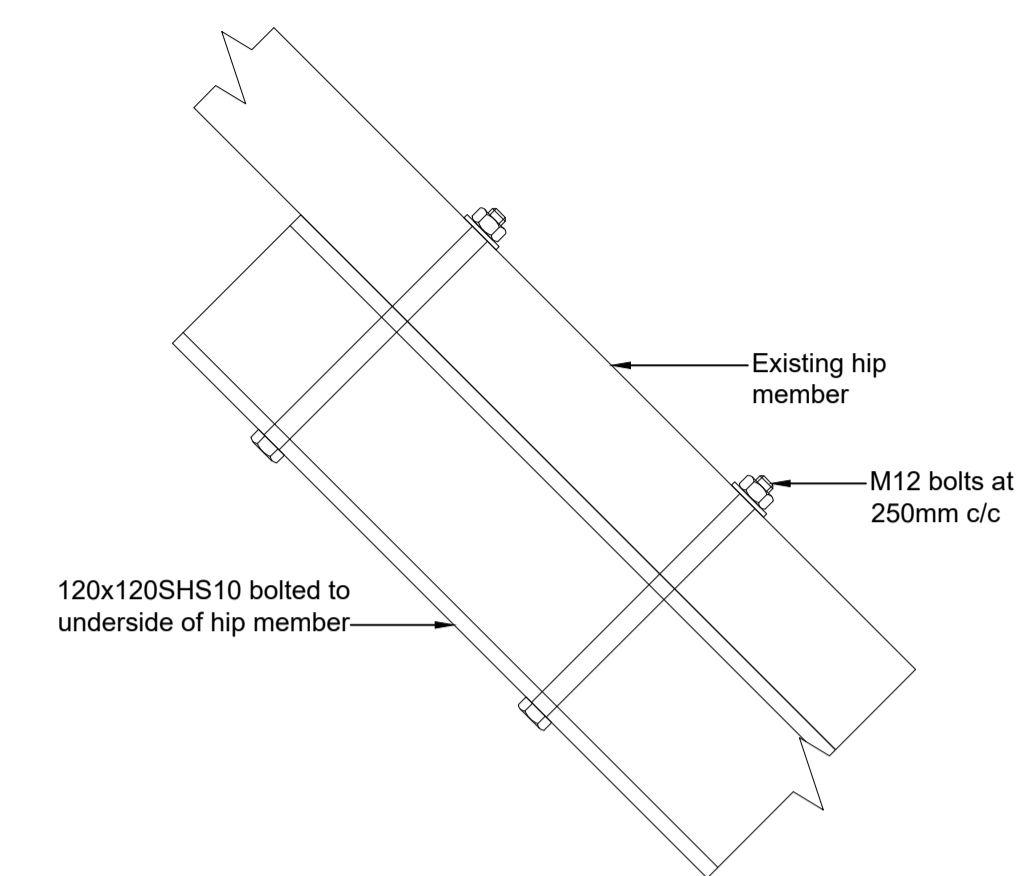
- General**
- 1.1. Refer to MNP drawing S-000 for full notes.
  - 1.2. This drawing is to be read in conjunction with all Architect's, Engineer's and Services Engineer's drawings and specifications.
  - 1.3. Do not scale from any of the structural drawings. All dimensions to be verified on site and any discrepancies should be highlighted.
  - 1.4. All waterproofing to the Architect's details.
  - 1.5. All materials to comply with the relevant British Standard.



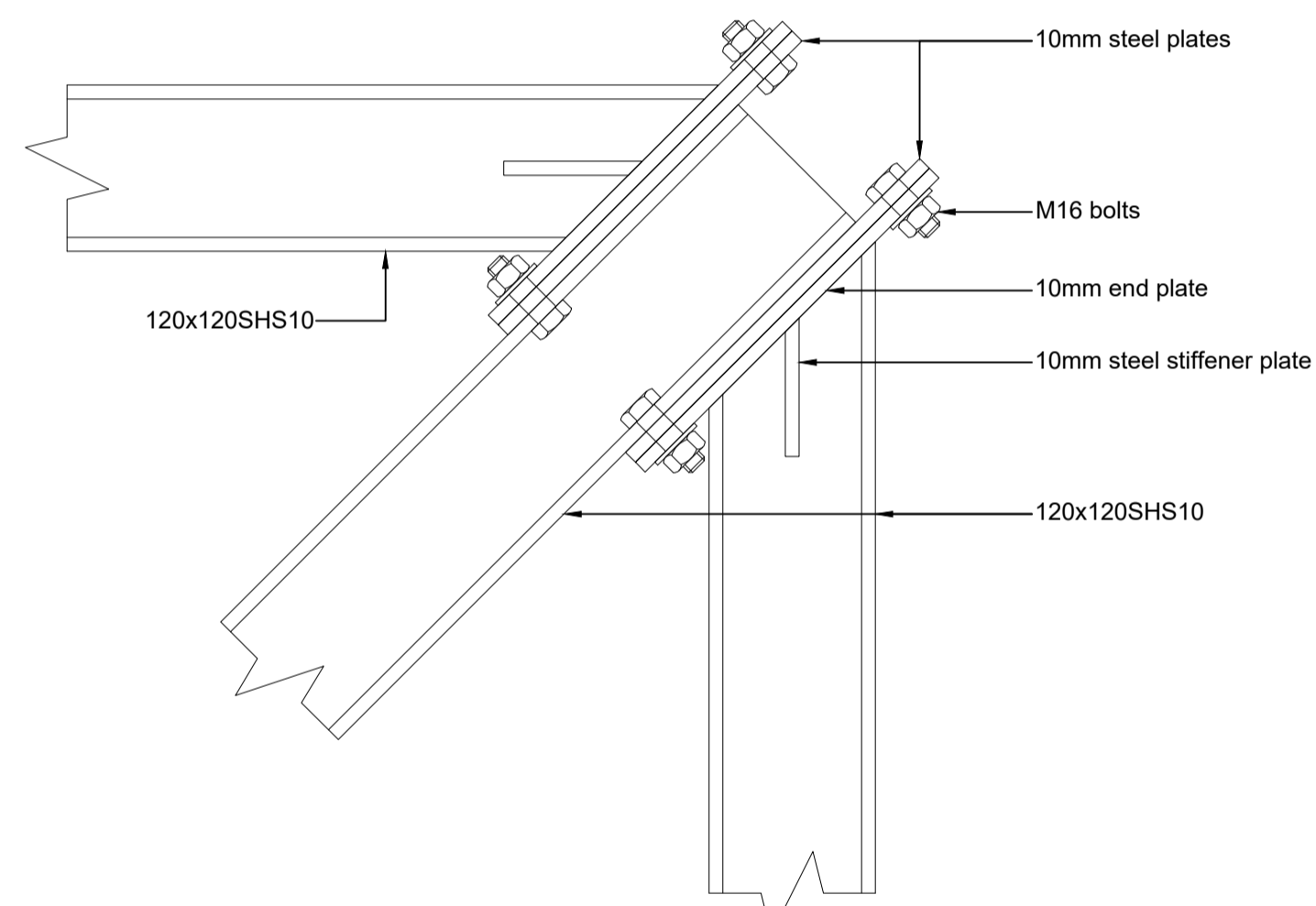
**Plan of hip corner steelwork**  
Scale 1:10



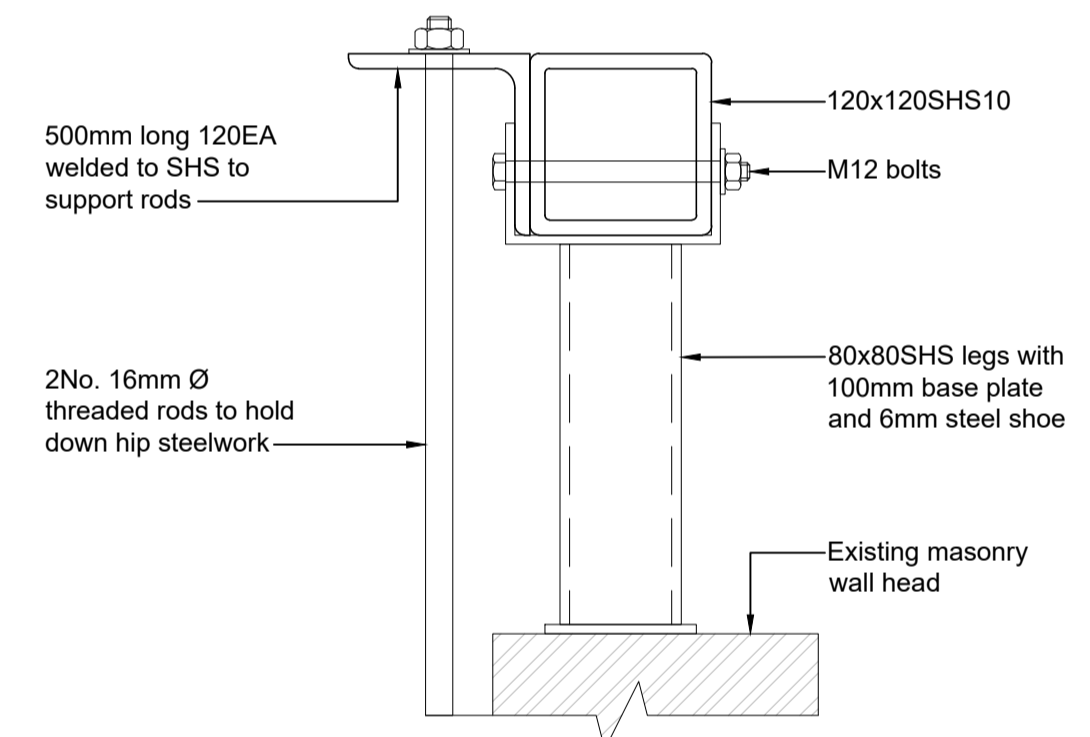
**Detail 2106.1**  
Scale 1:5



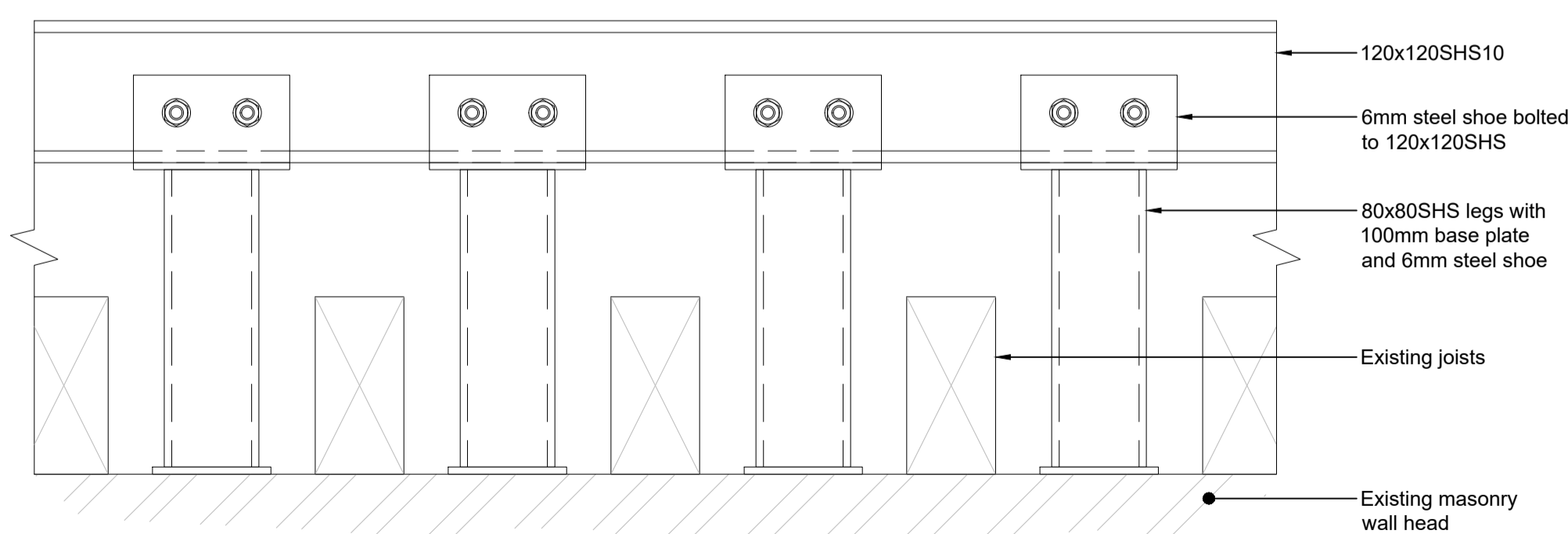
**Detail 2106.5 - Elevation On Hip Member**  
Scale 1:5



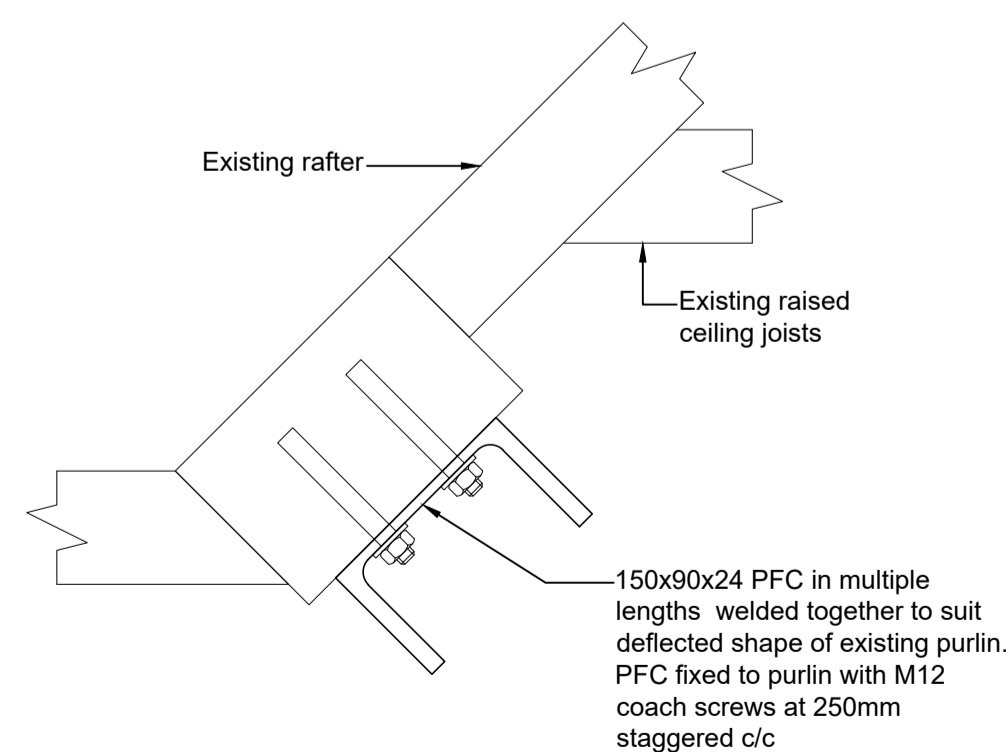
**Detail 2106.2 - Plan of steel junction**  
Scale 1:5



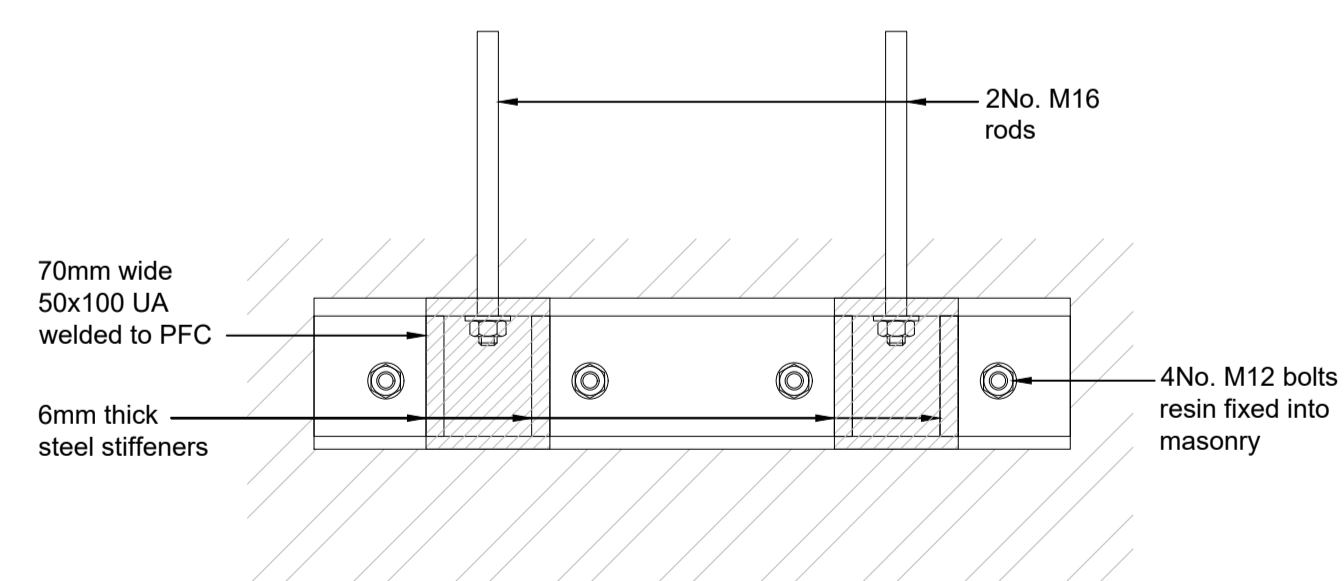
**Detail 2106.3 - Section through legs**  
Scale 1:5



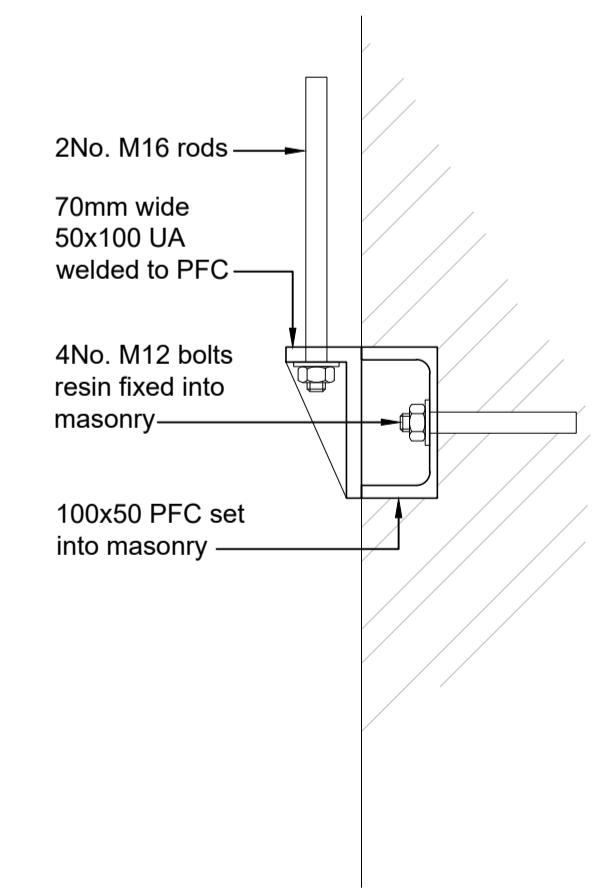
**Detail 2106.6 - 120x120SHS Leg Support**  
Scale 1:5



**Detail 2106.4 - Section Through Purlin**  
Scale 1:5



**Detail 2106.7 - Steel Channel anchored into wall**  
Scale 1:5



**Section through channel**  
Scale 1:5

P01	First issue	15.11.24	CM
REV	COMMENTS	DATE	CHK
STATUS			

PRELIMINARY

**mnp**  
mason navarro pledge  
Consulting Civil and Structural Engineers  
LONDON · MANCHESTER · HITCHIN  
0203 9265613 0161 8701197 01462 632012  
Email: office@mnp.co.uk www.mnp.co.uk

CLIENT  
**SHAUN BROWN**

PROJECT  
**32 THE GREEN,  
RICHMOND**

DRAWING TITLE  
**ROOF STRUCTURE  
REPAIR DETAILS**

SCALE @ A1	DRAWN BY	DATE
AS NOTED	JSE	13.11.24
MNP No.	STATUS CODE	REV
224260	S0	P 01
REF No.	224260-MNP-XX-XX-DR-S-2106	