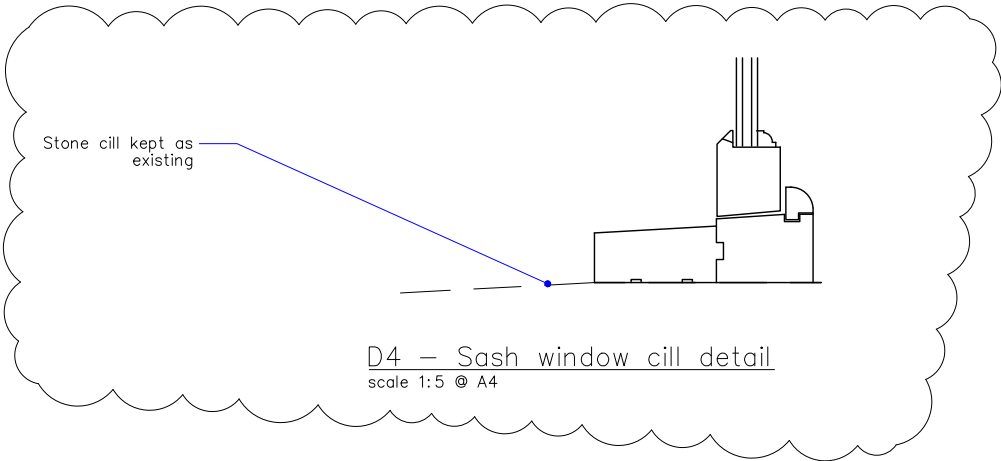
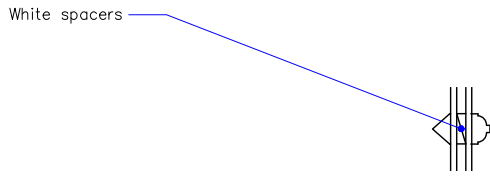


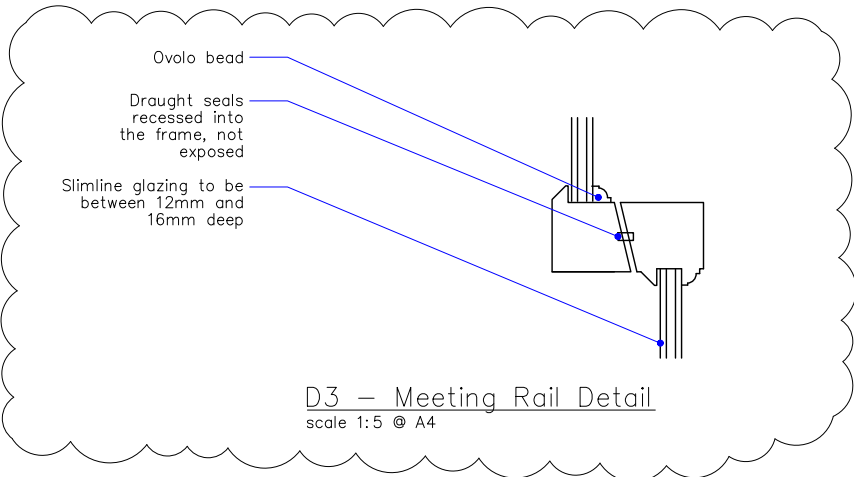
D1 – Sash window head detail
scale 1:5 @ A4



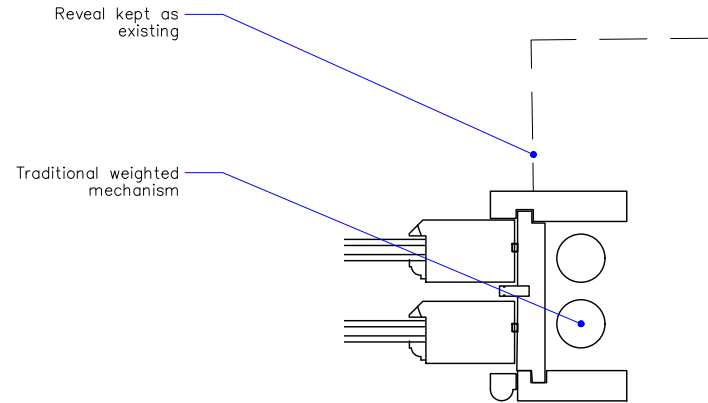
D4 – Sash window cill detail
scale 1:5 @ A4



D2 – Glazing bar detail
scale 1:5 @ A4

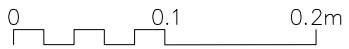


D3 – Meeting Rail Detail
scale 1:5 @ A4



D5 – Sash window jamb detail
scale 1:5 @ A4

- Notes:
- Window frames painted white to match existing and neighbouring properties
 - Clear float glass TGH soft coat slimline glazing with white spacers to be used
 - Sash window mechanism to be traditional weighted, not sprung
 - Stiles 65x55mm
 - Parting bead 25x8mm
 - Staff bead 25x15mm
 - Bottom rail 94x44mm
 - Meeting rail 44x52mm



Drawings are for planning purposes only. Do not use for fabrication!

Rev-B November 2024: revision for planning condition discharge

revisions

architect_richmond@proton.me

@architect_richmond

job title
22 Old palace Lane

client
Alan Woolway

drawing title
Proposed Window Detail

drawing number
AP.300.PIn.20

scale
1:20

date
July 2024

rev
drawn by
AP

checked by
B