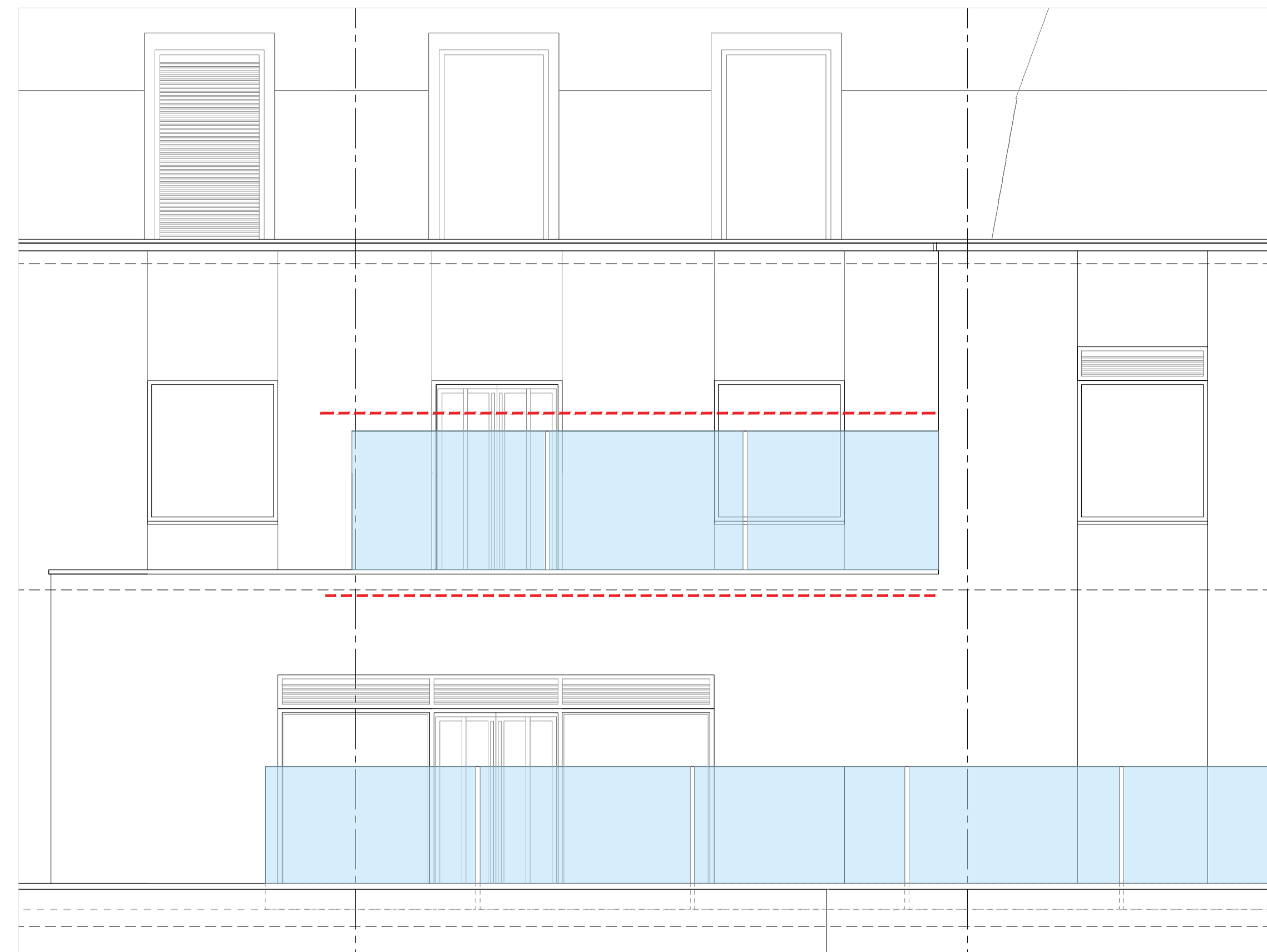
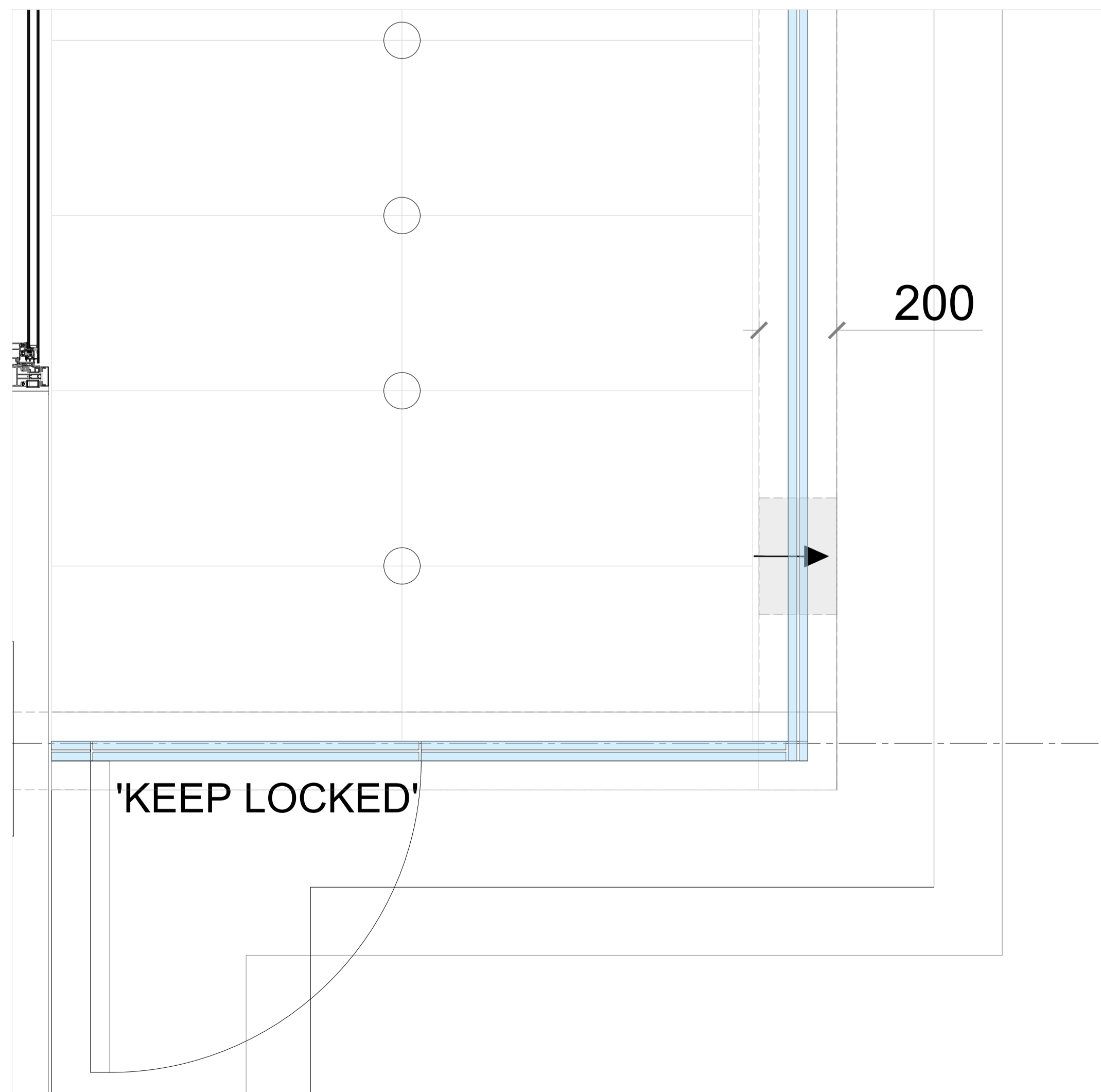


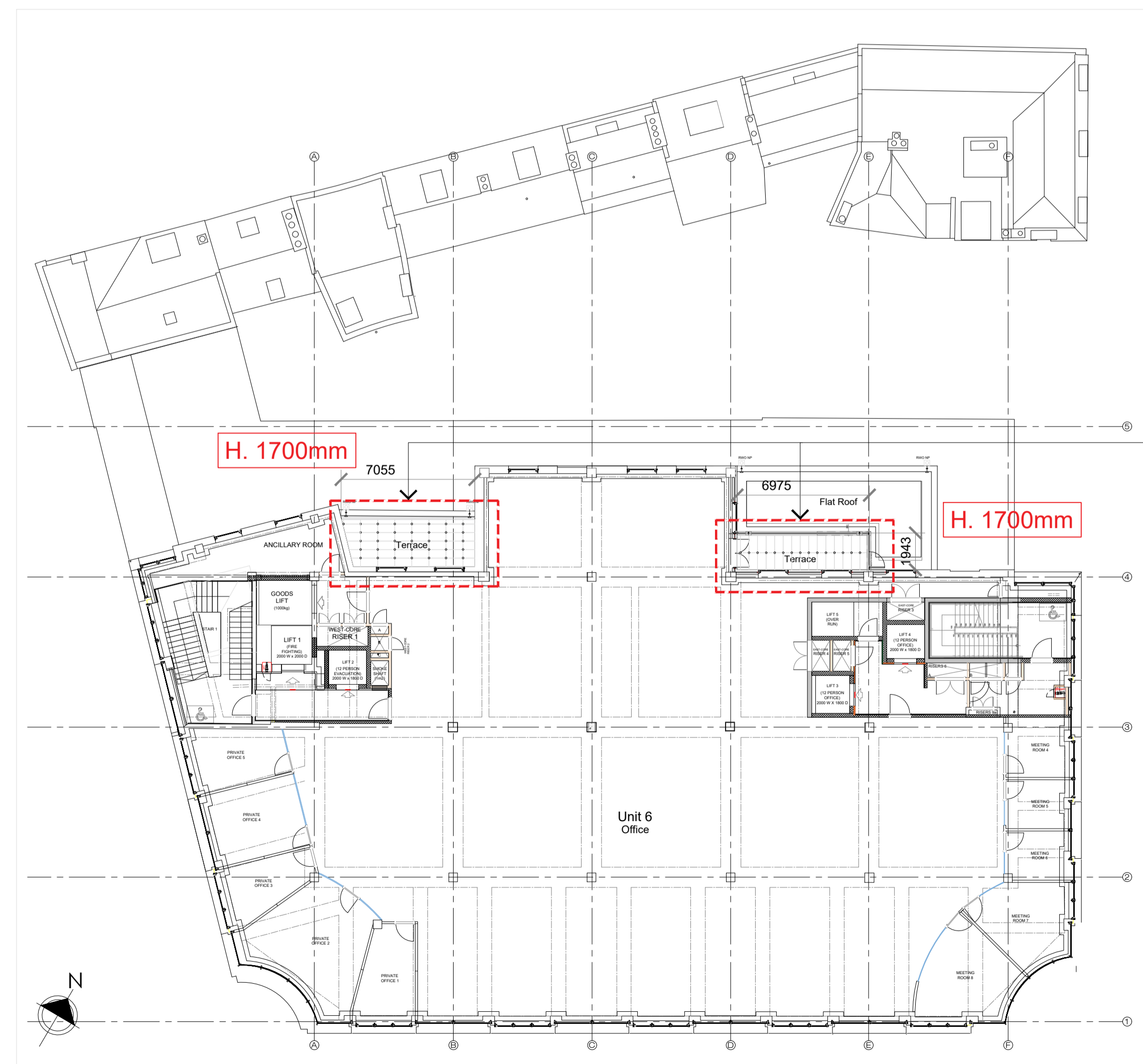
THIRD FLOOR BALUSTRADE DETAIL
Scale 1:10



PAVED COURT ELEVATION- THIRD FLOOR
Scale 1:50



THIRD FLOOR BALUSTRADE- PLAN
Scale 1:10



THIRD FLOOR PLAN
Scale 1:200

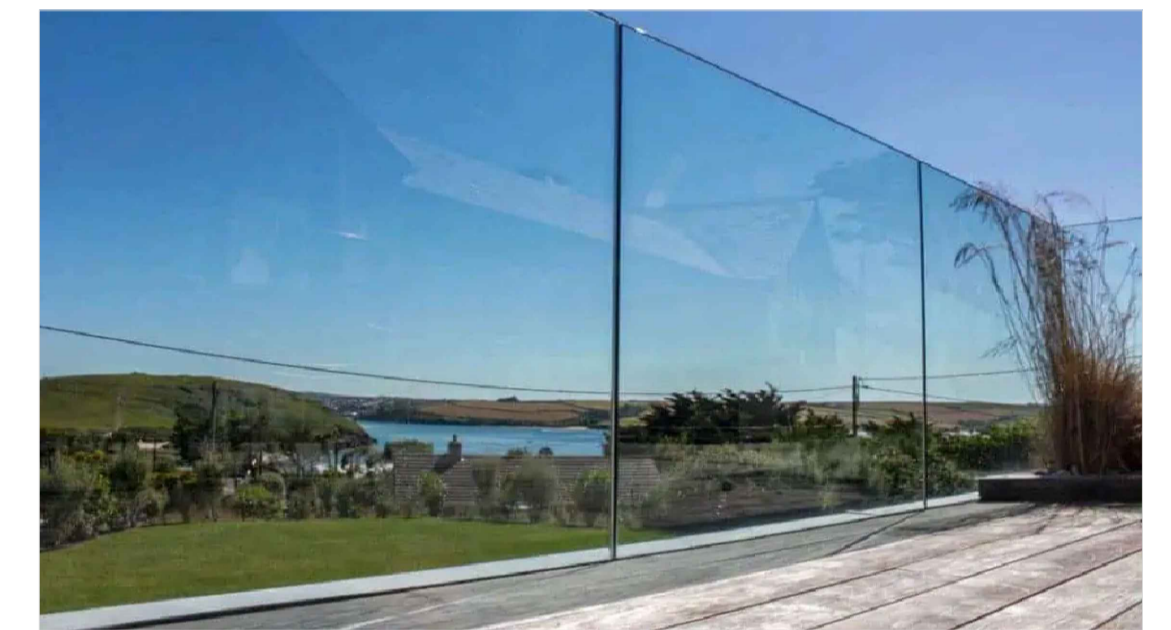
KEY:

- 01 21.5mm Obscured frosted glass balustrade 1700mm H FFL. Installed by specialist.
- NB. Balustrade to be designed for a minimum horizontal force of 1.5kN/m.
- Fixings to be designed by manufacturer.
- 02 New reinforced concrete upstand
- 03 Existing wall below parapet- prepare wall (existing deteriorating paint) to receive new external render and paint.

-Note: Loading Requirements 1.5 kN/m

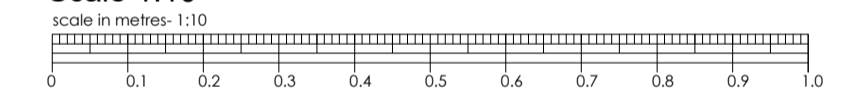


Obscured Frosted Glass Balustrade

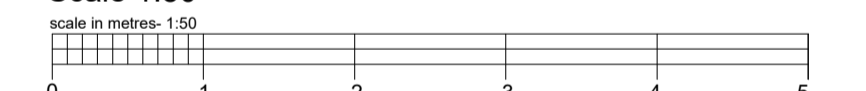


Frameless Glass Balustrade

Scale 1:10



Scale 1:50



Scale 1:200



Extent of balustrade on Third Floor

- REVISIONS
- 25.11.24 Rev: 08. Minor amendments made to balustrade height.
 - 15.11.24 Rev: 07. General Update.
 - 16.09.24 Rev: 06. Minor amendments made to balustrade height.
 - 10.05.24 Rev: 05. General Update made
 - 11.01.24 Rev: 04. Client requested amendments
 - 14.12.23 Rev: 03. Balustrade relocated to top of parapet.
 - 15.08.23 Rev: 02. Concrete plinths flush with single ply membrane/ weathering layer.
 - 27.07.23 Rev: 01. Notes amended base on comments from Structural Engineer.

PLANNING

TITLE
HOUSE OF FRASER, 75-81 GEORGE STREET, TW9 1HA

CLIENT
SHEENLANE DEVELOPMENTS LTD

DESCRIPTION
PROPOSED THIRD FLOOR BALUSTRADE DETAIL

date:	scale:	project:	drawing:	revision:
MAR 23	1:10 1:50 1:200 @ A1	220105	P02-307	08

SILVERLINE ARCHITECTS

EMAIL: INFO@SILVERLINEARCHITECTS.COM

ALL RESPONSIBILITY TO BE OBSERVED BY THE CLIENT. ANY DISCREPANCY BETWEEN THIS DRAWING AND OTHER INFORMATION IS TO BE REFERRED TO SILVERLINE ARCHITECTS. THIS DRAWING IS COPYRIGHT.