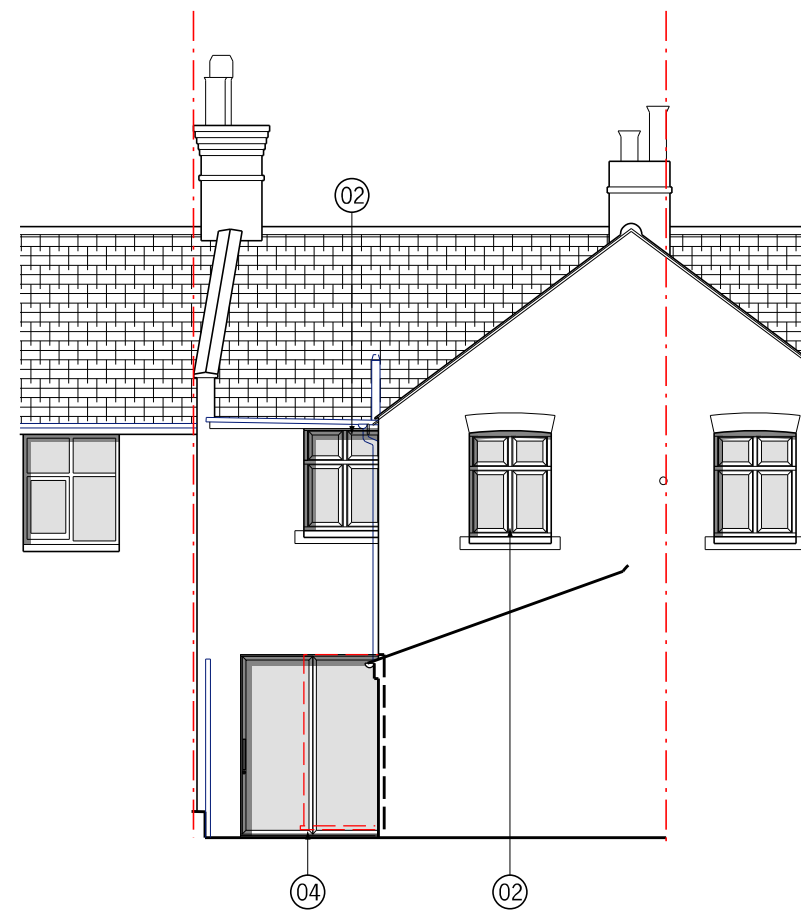


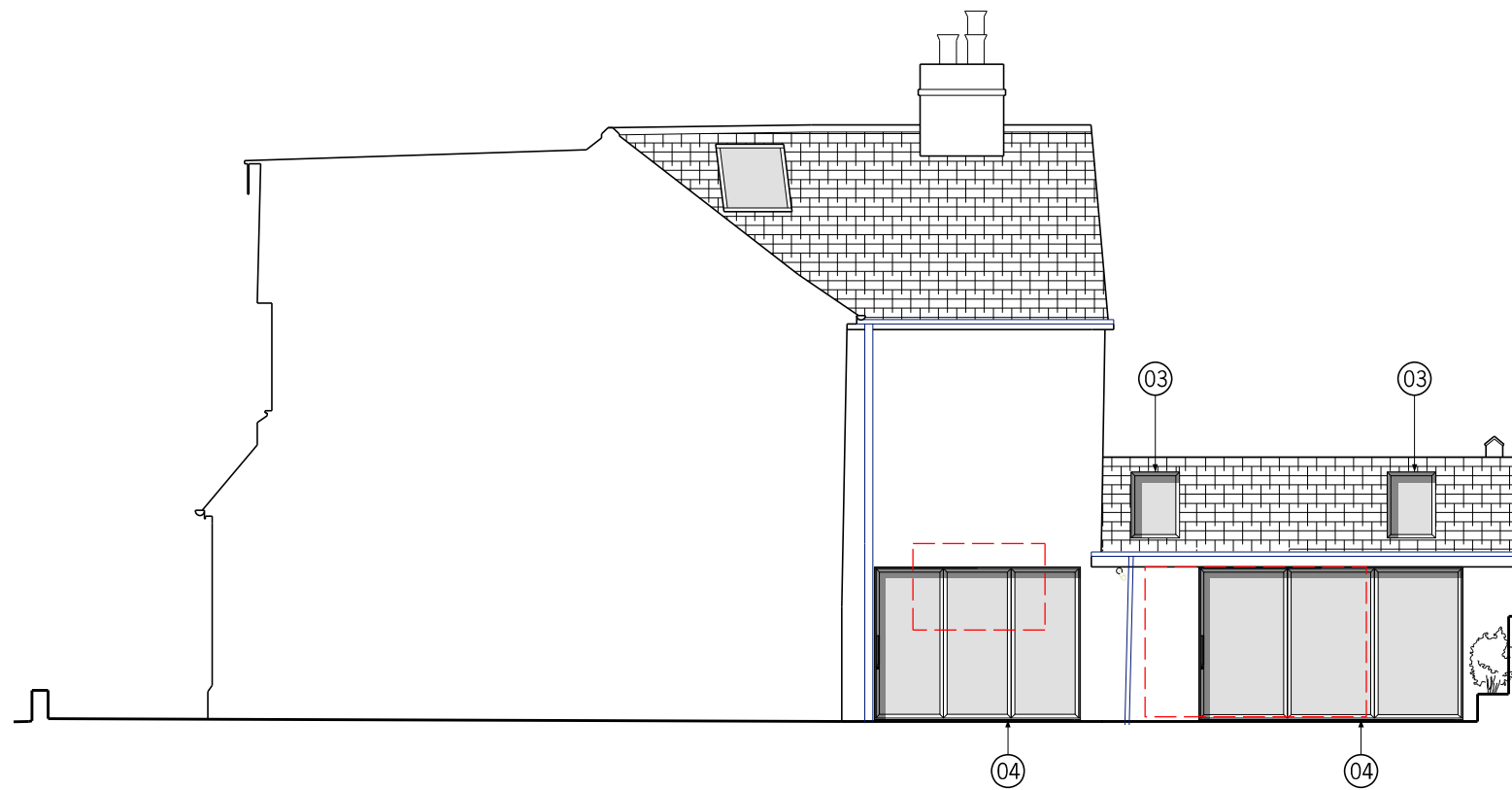


01 Proposed Front Elevation  
1:100@A3



02 Proposed Rear Elevation  
1:100@A3

- ① Solid Timber external front door with double glazed timber framed fixed window above
- ② Double glazed timber framed casement windows
- ③ Double glazed conservation rooflights
- ④ Double glazed doors
- ⑤ Roof fascia teeth trim detail
- ⑥ Scalloped roofing tiles
- ⑦ Entrance canopy with timber fascia detailing



03 Proposed Side 1 Elevation  
1:100@A3

Key:	
Demolition	- - - - -
Boundary Line	- . - . - .

All dimensions must be checked and PAPA Architects Ltd are to be informed of any discrepancies prior to construction. Any DWG's issued by PAPA Architects Ltd are to be read in conjunction with the associated PDF versions. This drawing and any of the details therein remain the copyright of PAPA Architects Ltd. All drawings prepared by PAPA Architects are not to be used for any submissions, area schedule calculations or used by any other persons or companies other than PAPA Architects Ltd unless written consent has been given by PAPA Architects Ltd.



Rev	Date	Description	Chk
PI03	05.11.24	Updated Elevations	DY
PI04	06.11.24	Updated Doors	DY

**PAPA ARCHITECTS**  
Woodgate Studios, 2nd Floor, 2-8 Games Road EN4 9HN w: papaarchitects.co.uk t: +44 20 8348 8411

Drawing Title:		Project Name:		Client:	
<b>Proposed Elevations</b>		<b>23 Gloucester Road, TW9 3BS</b>			
Project No:	2409	Drawing No:	00_210	Rev:	PI04
Scale:	1:100@A3	Status:	PLANNING	Date:	17.10.24
Drawn:					JM