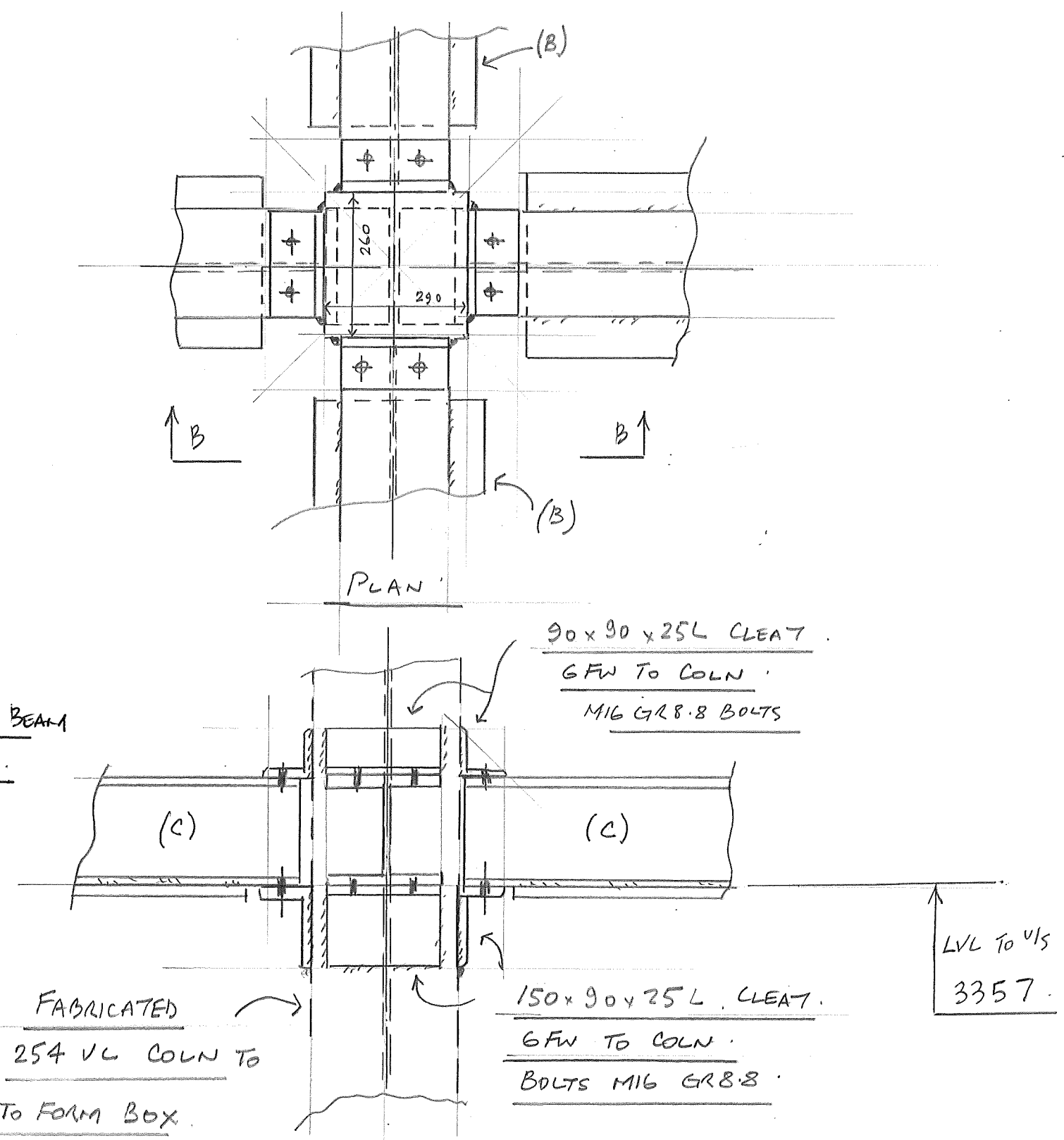


CONNECTION C5



CONNECTION C6 - BEAM SECTIONS GR S355

**Elstead Engineering Limited**  
 Unit 3 Essex House Josselin Road,  
 Basildon Essex SS13 1EL  
 Telephone - 01268 725 150  
 Facsimile - 01268 725 160

**General Notes: -**  
 Holes: diameter UNO  
 Welds: 6 mm Fillets UNO  
 Surface Treatment:  
S/B + ZINC PHOSPHATE PRIMER

**Contract:** PALM COURT  
**Drawing Title:**  
PROPOSED STEEL -  
STEEL CONNECTION DETAILS

**Contract No:** 2309 / 01  
**Drawing No:** GA 2/B  
**Date:** OCT 23

REV A 3-11-23 CONNE C5 UPDATED TO SITE VISIT.  
 REV B 20/11/23 UPDATED TO CALCULATION COMMENTS