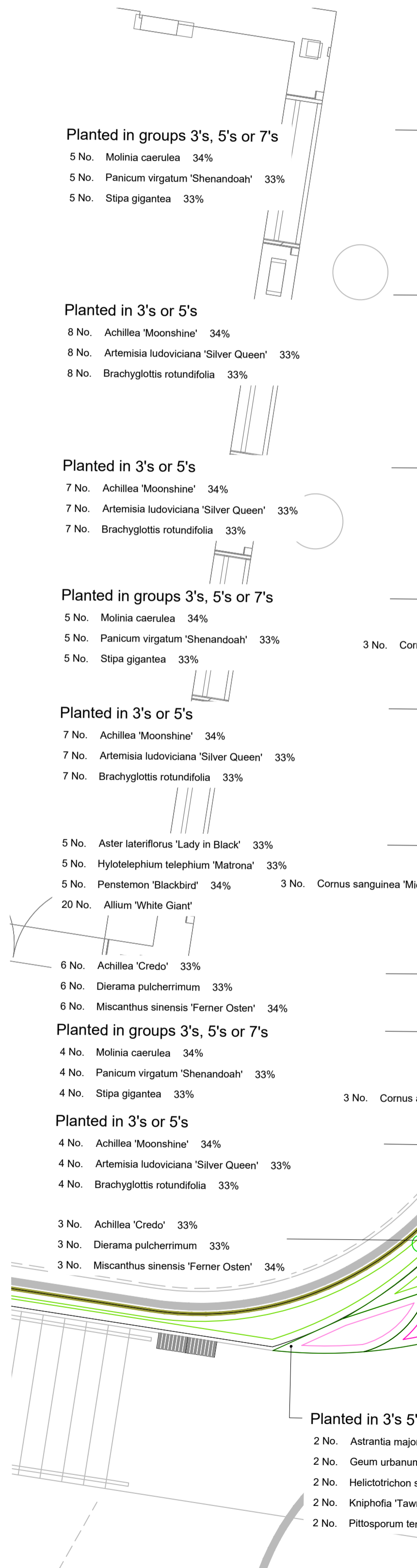
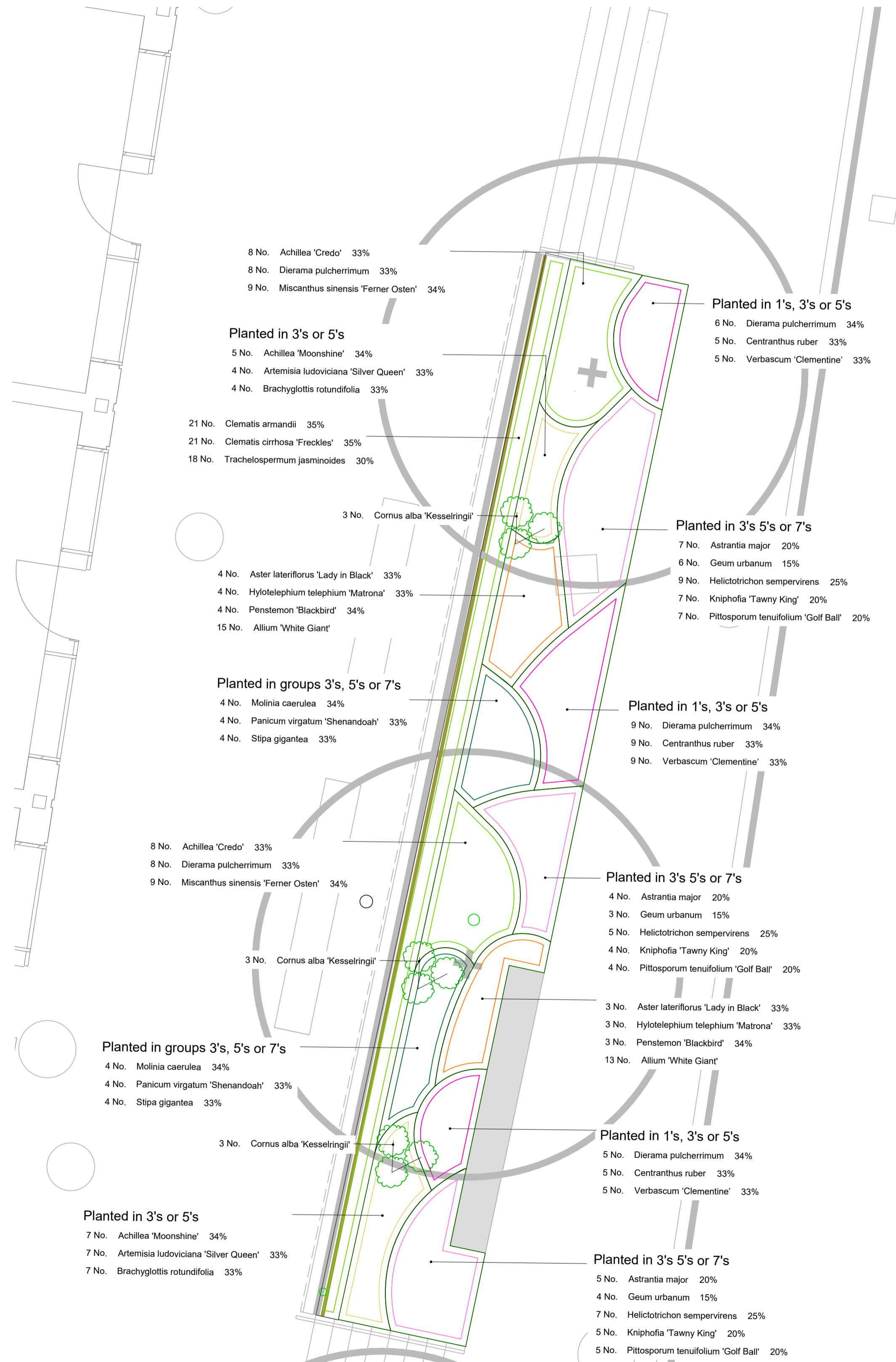


FOR SOFTWARES & SCHEDULE REFER TO LDA
DWG 6975_305.
FOR TREE PLAN & SPECIFICATION REFER TO LDA
DWG: 6975_301



01 TYPICAL PLANTING PLAN - WATER LANE NORTH
PLAN SCALE 1:50 @ A1

02 TYPICAL PLANTING PLAN - WATER LANE SOUTH
PLAN SCALE 1:50 @ A1

- Planted in 3's or 5's
 - 7 No. Achillea 'Moonshine' 34%
 - 7 No. Artemisia ludoviciana 'Silver Queen' 33%
 - 7 No. Brachyglottis rotundifolia 33%
- Planted in 3's 5's or 7's
 - 8 No. Astrantia major 20%
 - 6 No. Geum urbanum 15%
 - 10 No. Helictotrichon sempervirens 25%
 - 8 No. Kniphofia 'Tawny King' 20%
 - 8 No. Pittosporum tenuifolium 'Golf Ball' 20%
- Planted in 3's 5's or 7's
 - 6 No. Aster lateriflorus 'Lady in Black' 33%
 - 6 No. Hylotelephium telephium 'Matrona' 33%
 - 6 No. Penstemon 'Blackbird' 34%
 - 22 No. Allium 'White Giant'
- Planted in 1's, 3's or 5's
 - 8 No. Dierama pulcherrimum 34%
 - 7 No. Centranthus ruber 33%
 - 7 No. Verbasicum 'Clementine' 33%
- Planted in 3's 5's or 7's
 - 6 No. Astrantia major 20%
 - 5 No. Geum urbanum 15%
 - 8 No. Helictotrichon sempervirens 25%
 - 6 No. Kniphofia 'Tawny King' 20%
 - 6 No. Pittosporum tenuifolium 'Golf Ball' 20%
- Planted in 1's, 3's or 5's
 - 4 No. Dierama pulcherrimum 34%
 - 4 No. Centranthus ruber 33%
 - 4 No. Verbasicum 'Clementine' 33%
- Planted in 3's 5's or 7's
 - 3 No. Astrantia major 20%
 - 2 No. Geum urbanum 15%
 - 4 No. Helictotrichon sempervirens 25%
 - 3 No. Kniphofia 'Tawny King' 20%
 - 3 No. Pittosporum tenuifolium 'Golf Ball' 20%
- Planted in 1's, 3's or 5's
 - 4 No. Dierama pulcherrimum 34%
 - 3 No. Centranthus ruber 33%
 - 3 No. Verbasicum 'Clementine' 33%
- Planted in 3's 5's or 7's
 - 2 No. Astrantia major 20%
 - 1 No. Geum urbanum 15%
 - 2 No. Helictotrichon sempervirens 25%
 - 2 No. Kniphofia 'Tawny King' 20%
 - 2 No. Pittosporum tenuifolium 'Golf Ball' 20%
- Planted in 1's, 3's or 5's
 - 2 No. Dierama pulcherrimum 34%
 - 2 No. Centranthus ruber 33%
 - 2 No. Verbasicum 'Clementine' 33%
- Planted in 3's 5's or 7's
 - 2 No. Astrantia major 20%
 - 2 No. Geum urbanum 15%
 - 3 No. Helictotrichon sempervirens 25%
 - 2 No. Kniphofia 'Tawny King' 20%
 - 2 No. Pittosporum tenuifolium 'Golf Ball' 20%
- Planted in 1's, 3's or 5's
 - 2 No. Dierama pulcherrimum 34%
 - 2 No. Centranthus ruber 33%
 - 2 No. Verbasicum 'Clementine' 33%
- Planted in 3's 5's or 7's
 - 2 No. Astrantia major 20%
 - 2 No. Geum urbanum 15%
 - 2 No. Helictotrichon sempervirens 25%
 - 2 No. Kniphofia 'Tawny King' 20%
 - 2 No. Pittosporum tenuifolium 'Golf Ball' 20%

READ THIS FIRST

Note for Contractors
This drawing should be considered along with the risk information contained in the CDM Pre Construction Information. This information will include details of the SIGNIFICANT risks which LDA Design has identified which may arise from constructing their designs shown on this drawing. A Competent Contractor should be aware of the typical risks associated with doing this work.

Note for Workers
DO NOT START YOUR WORK unless you know the Risks and Controls relating to the work on this drawing (including SAFE SEQUENCES OF WORK AND EQUIPMENT).

Do not issue copies of parts of this drawing without the above Note for Workers (unless you are sure that the Workers can undertake the work safely).

REV.	DESCRIPTION	DATE
001	Issue	29/04/22

LDA DESIGN

PROJECT TITLE
TWICKENHAM RIVERSIDE

DRAWING TITLE
PLANTING PLAN ZOOM SHEET 01

ISSUED BY	London	T: 020 7467 1470
DATE	MARCH 2022	DRAWN NR
SCALE	A1 1:50	CHECKED TV
STATUS	Tender	APPROVED AH

DWG. NO 6975_310

No dimensions are to be scaled from this drawing. All dimensions are to be checked on site. Area measurements for indicative purposes only.
© LDA Design Consulting LLP. Quality Assured to BS EN ISO 9001:2000
Sources: Ordnance Survey

