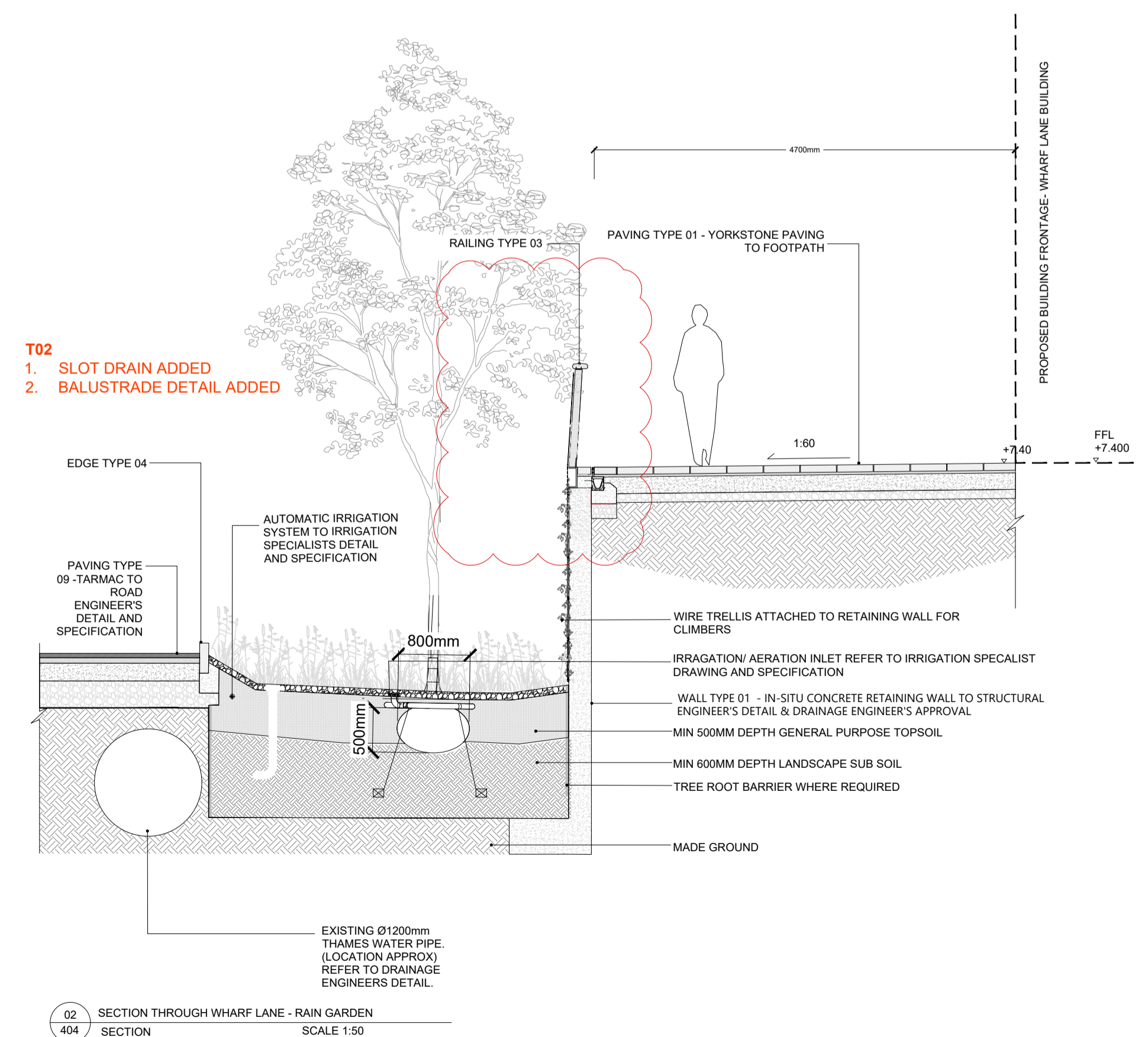
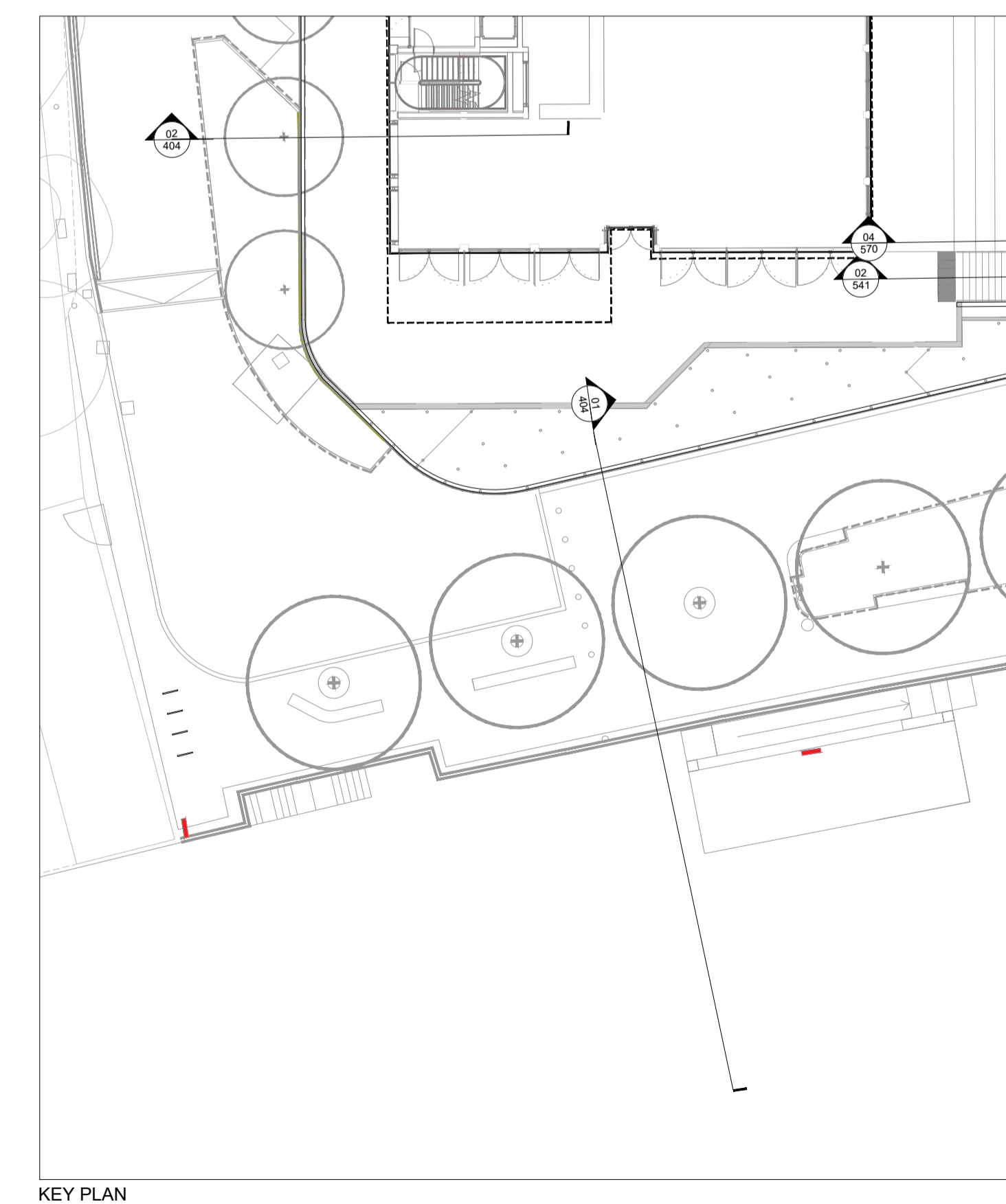
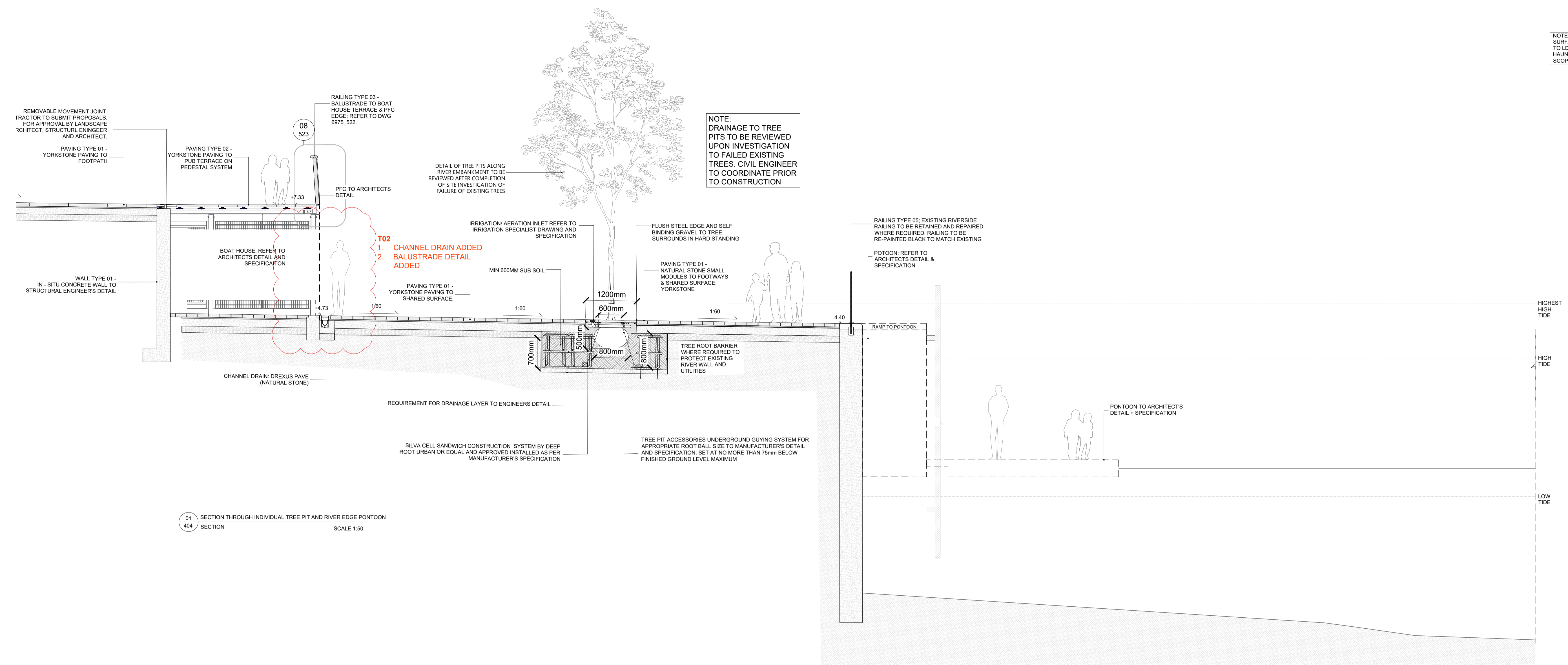


X:\JOBS\6975\_TWICKENHAM\_RIVERSIDE\CAD\X\_REF\6975\_HARDWORK\_DETAILS\_400\_SERIES\_REV\CDWG

NOTE:  
SURFACE FINISHES AND IMMEDIATE FIXINGS  
TO LDA'S DETAIL & SPECIFICATION.  
HAUNCHING AND BUILD-UPS TO ENGINEER'S  
SCOPE



**READ THIS FIRST**

- Note for Contractors**  
This drawing should be considered along with the risk information contained in the CDM Pre Construction Information. This information will include details of the SIGNIFICANT risks which LDA Design has identified which may arise from constructing their designs shown on this drawing. A Competent Contractor should be aware of the typical risks associated with doing this work.
- Note for Workers**  
DO NOT START YOUR WORK unless you know the Risks and Controls relating to the work on this drawing (including SAFE SEQUENCES OF WORK and EQUIPMENT).
- Do not issue copies of parts of this drawing without the above Note for Workers (unless you are sure that the Workers can undertake the work safely).

REV.	DESCRIPTION	APP.	DATE
T02	Stage 4 Issue	AH	29/04/22
T01	Draft Issue for Stage 4	AH	04/03/22
T00	Draft Issue for Costing	AH	12/11/21
A	Planning Issue	AH	27/07/21

**LDA DESIGN**

PROJECT TITLE  
6975\_TWICKENHAM RIVERSIDE

DRAWING TITLE  
SECTION THROUGH TREES IN PAVEMENT & RAIN GARDEN

ISSUED BY	London	T: 020 7467 1470
DATE	15 JUL 2021	DRAWN BS
SCALE: A1	1:50	CHECKED TW
STATUS	Tender	APPROVED AH

DWG. NO 6975\_404

No dimensions are to be scaled from this drawing. All dimensions are to be checked on site. Area measurements for indicative purposes only.  
© LDA Design Consulting Ltd. Quality Assured to BS EN ISO 9001 : 2015  
Sources: Ordnance Survey

