

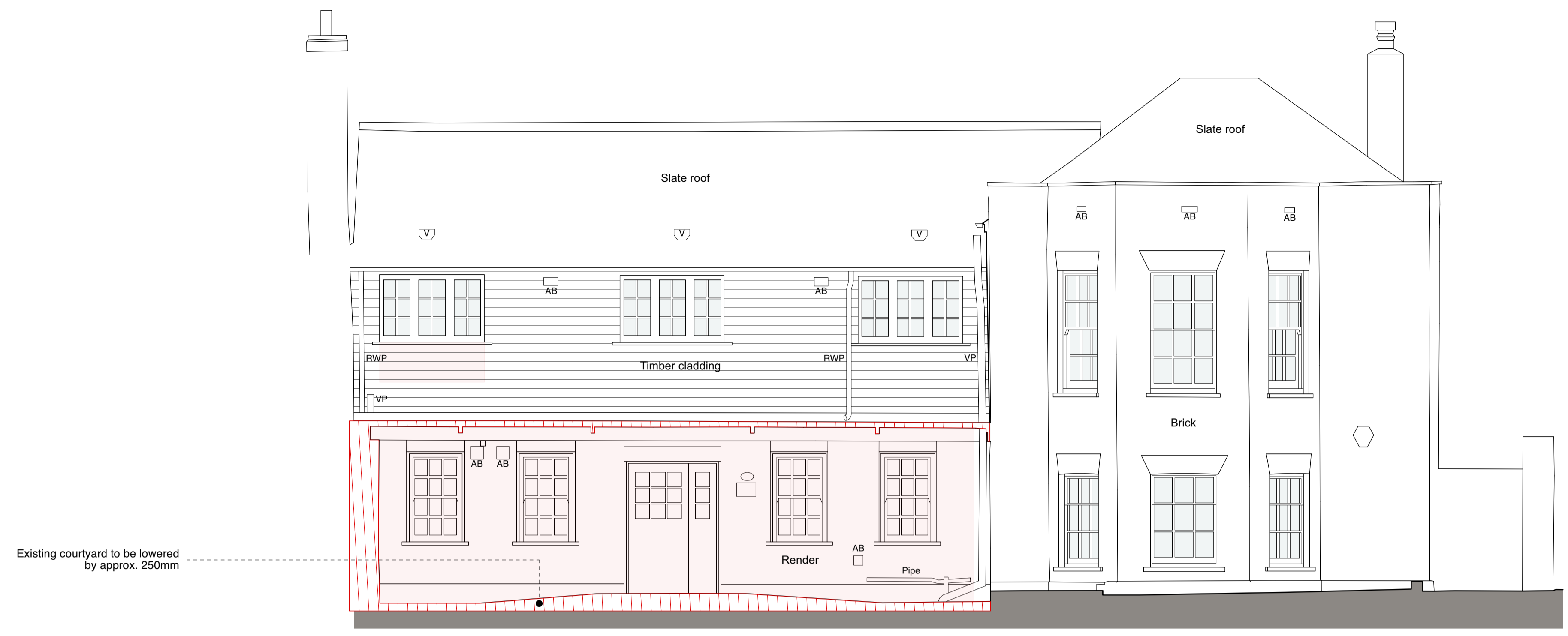
General Notes

- Do not scale from this drawing
- All dimensions to be verified on site
- To be read in conjunction with all relevant documents
- In the event of discrepancy notify the Architect immediately
- All steel structural elements to be finished with intumescent coating, 30 minutes fire resistance. For all structural elements and connection see SE drawings.
- This document is copyright of Hugh Cullum Architects Ltd

Issue Status

- SK Sketch	- T Tender	- P Permissions
- D Design	- E Existing Condition	- C Contract

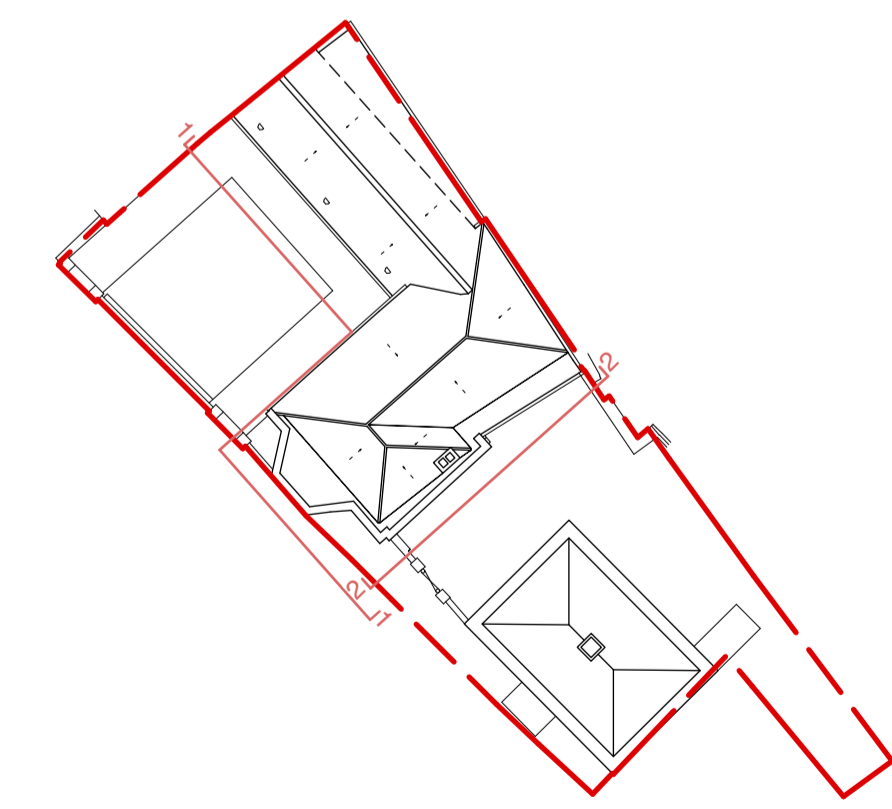
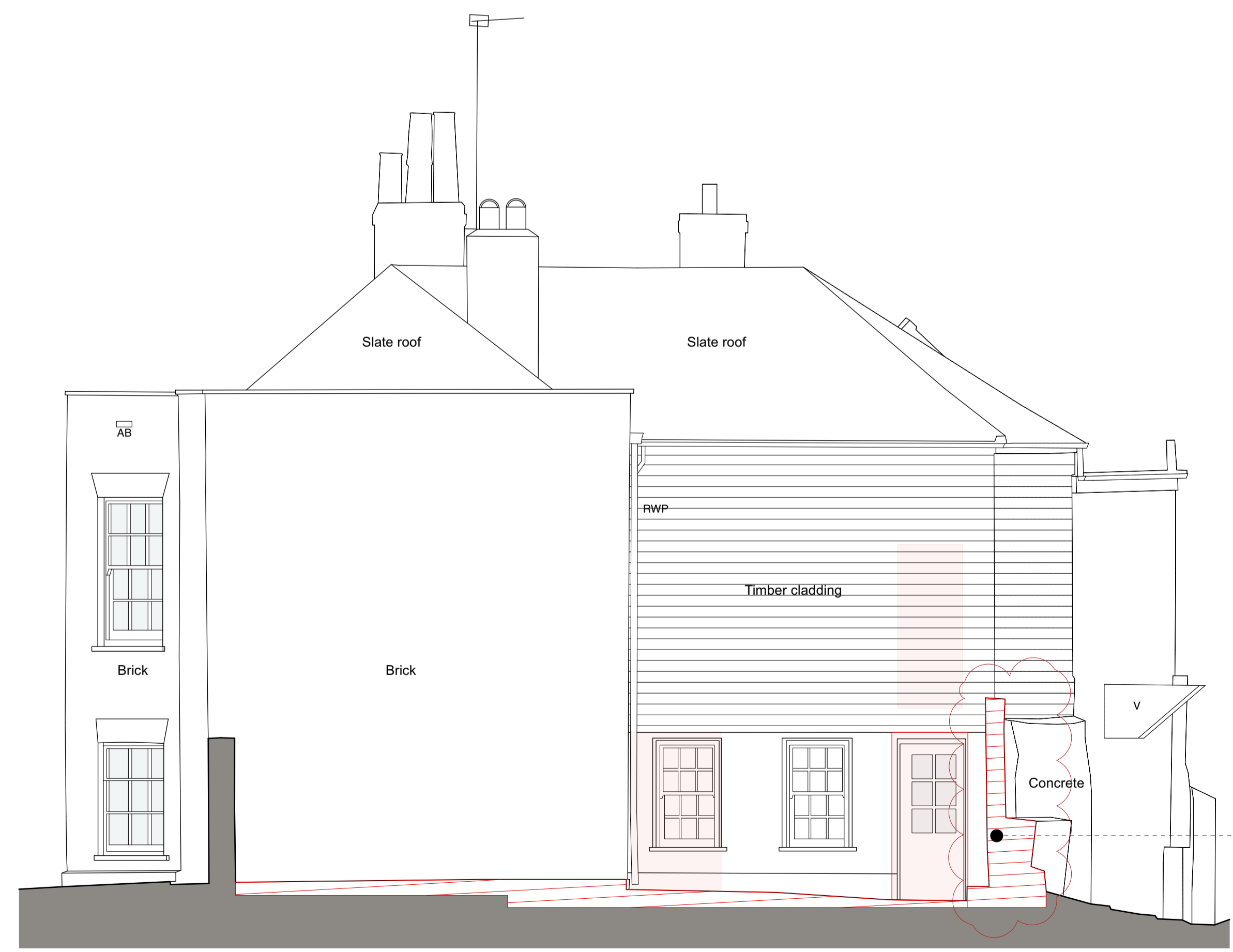
rev	note	date	(drawn by)
(D)	Issued for Planning	25.11.24	(TS / HC)



Indicates areas of demolition shown in elevation

Indicates areas of demolition shown in section

Elevation 1



AS EXISTING General Arrangement

Elevation 2

HUGH CULLUM ARCHITECTS LTD
 Bloomsbury Design
 61b Judd Street
 London WC1H 9QT
 t 020 7383 7647
 f 020 7387 7645
 mail@hughcullum.com

RTM Parish Rooms
 Existing
 General Arrangement
 Elevations 1 and 2
 1:50@A1 1:100@A3
 April 2024
 SMR01 - E200 (D)