

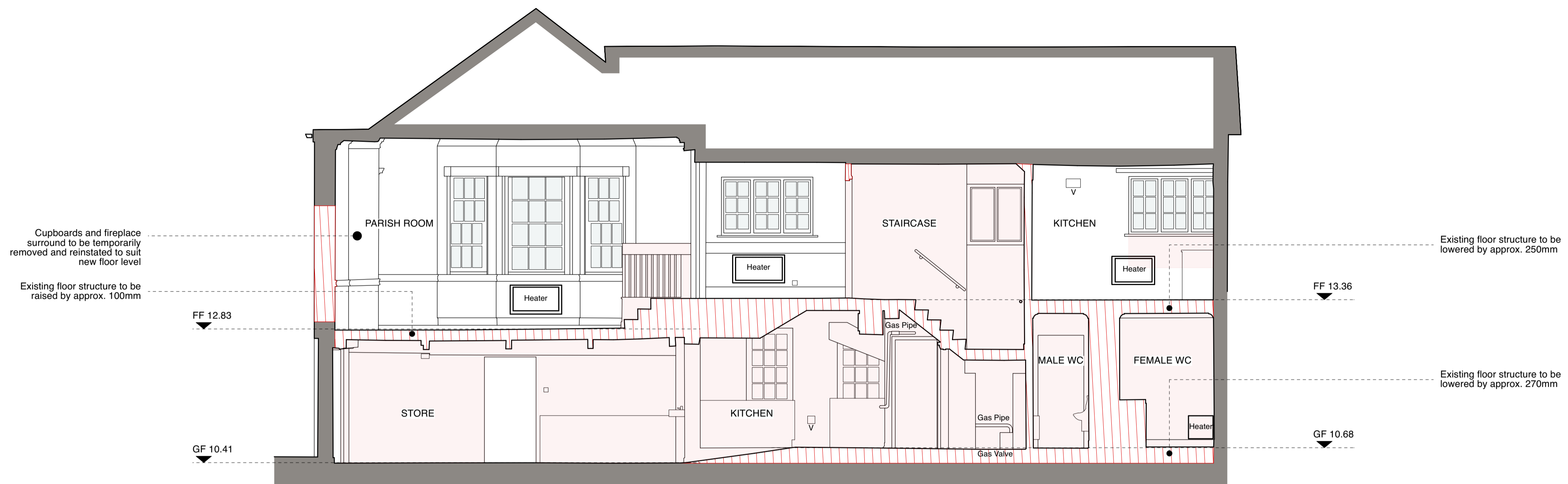
General Notes

- Do not scale from this drawing
- All dimensions to be verified on site
- To be read in conjunction with all relevant documents
- In the event of discrepancy notify the Architect immediately
- All steel structural elements to be finished with intumescent coating, 30 minutes fire resistance. For all structural elements and connection see SE drawings.
- This document is copyright of Hugh Cullum Architects Ltd

Issue Status

- SK Sketch	- T Tender	- P Permissions
- D Design	- E Existing Condition	- C Contract

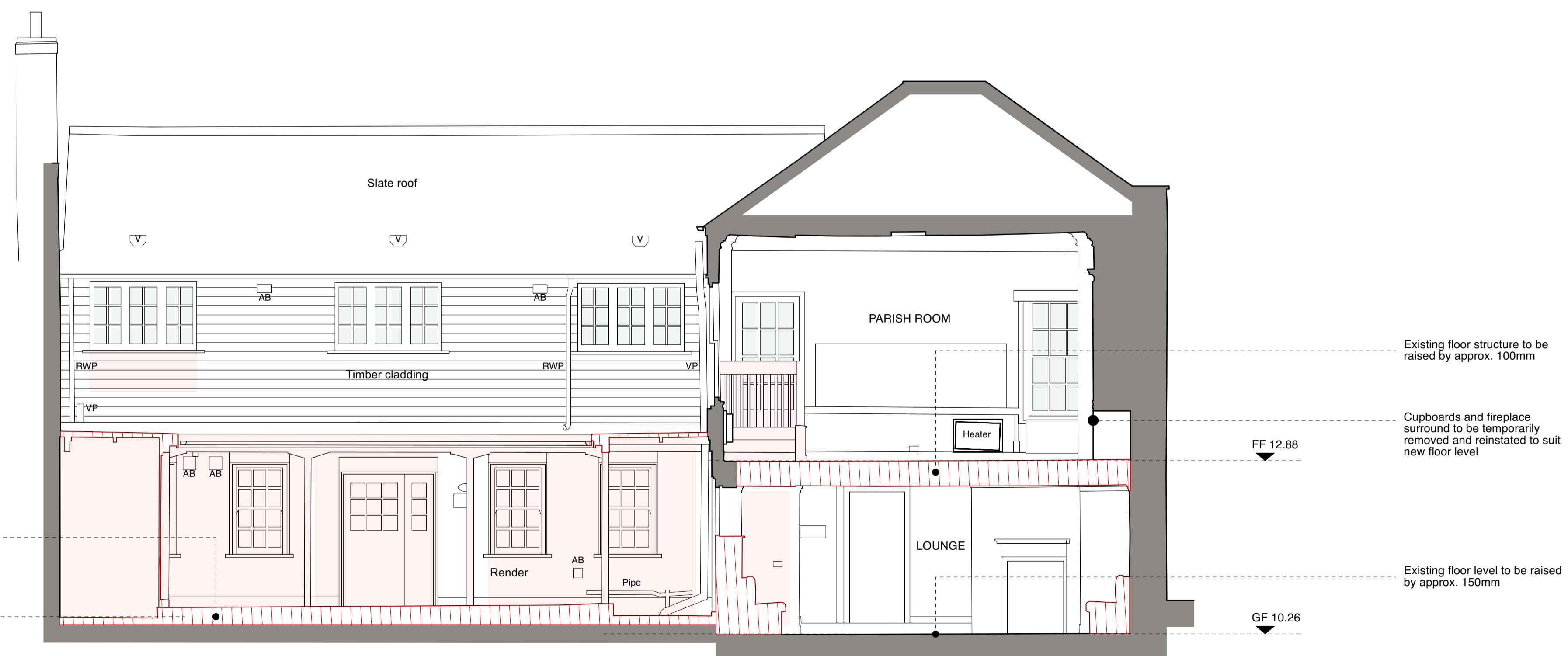
rev	note	date	(drawn by/checked by)
(D)	Issued for Planning	25.11.24	(TS / HC)



Section CC

Indicates areas of demolition shown in elevation

Indicates areas of demolition shown in section



Section DD

