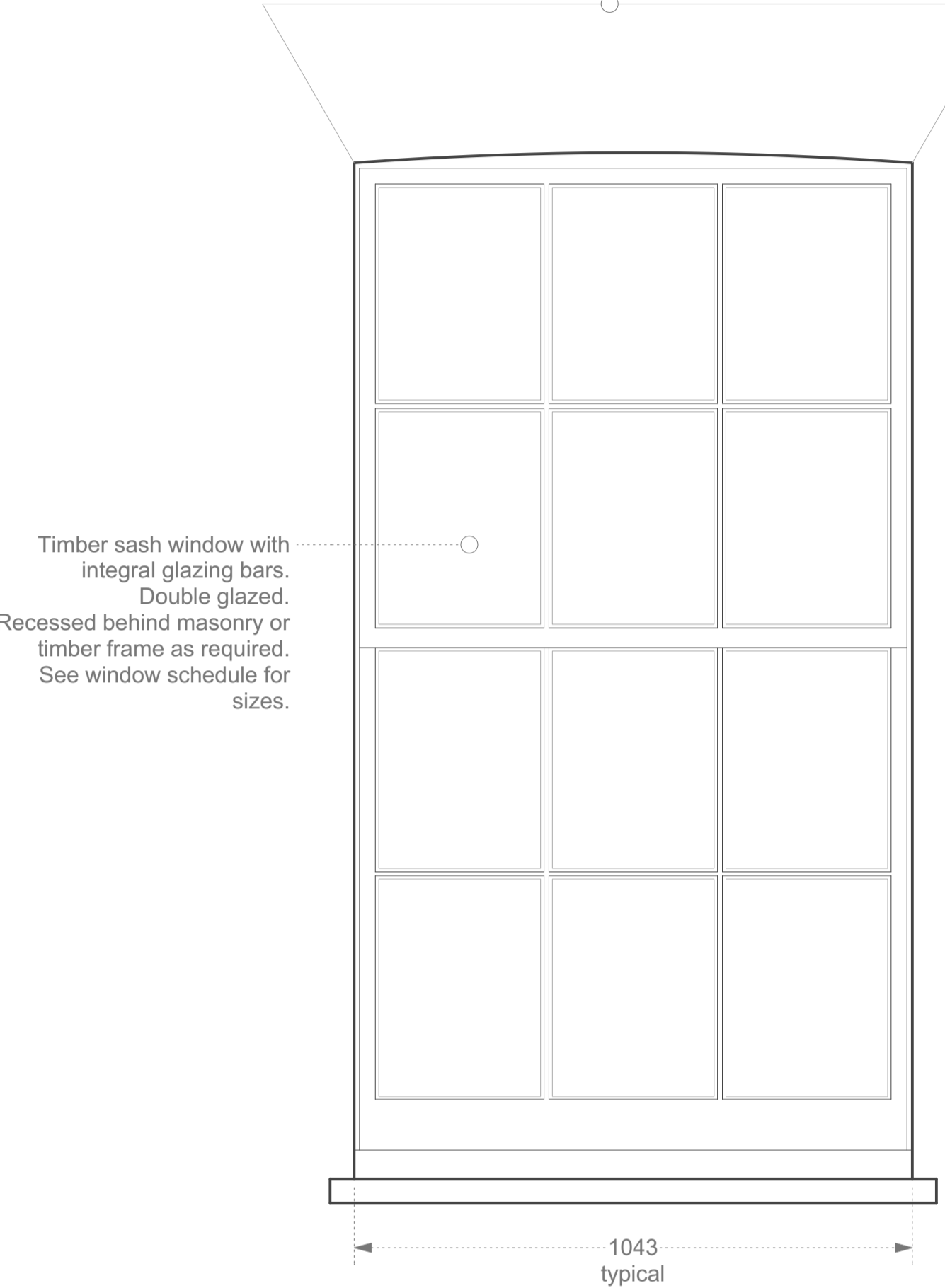


### SASH WINDOWS

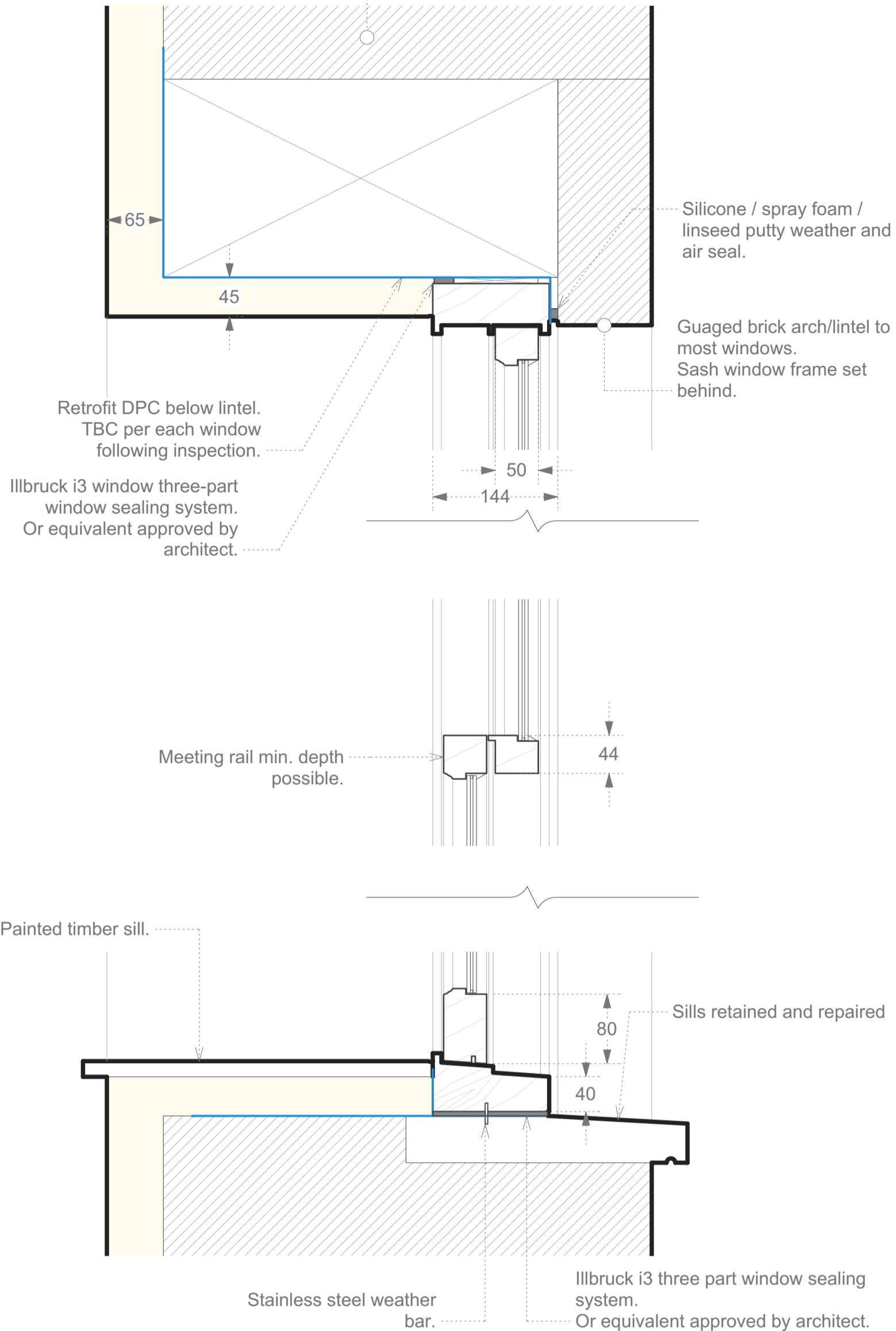
Existing structural openings and supports retained. Except where new openings made - see window schedule.



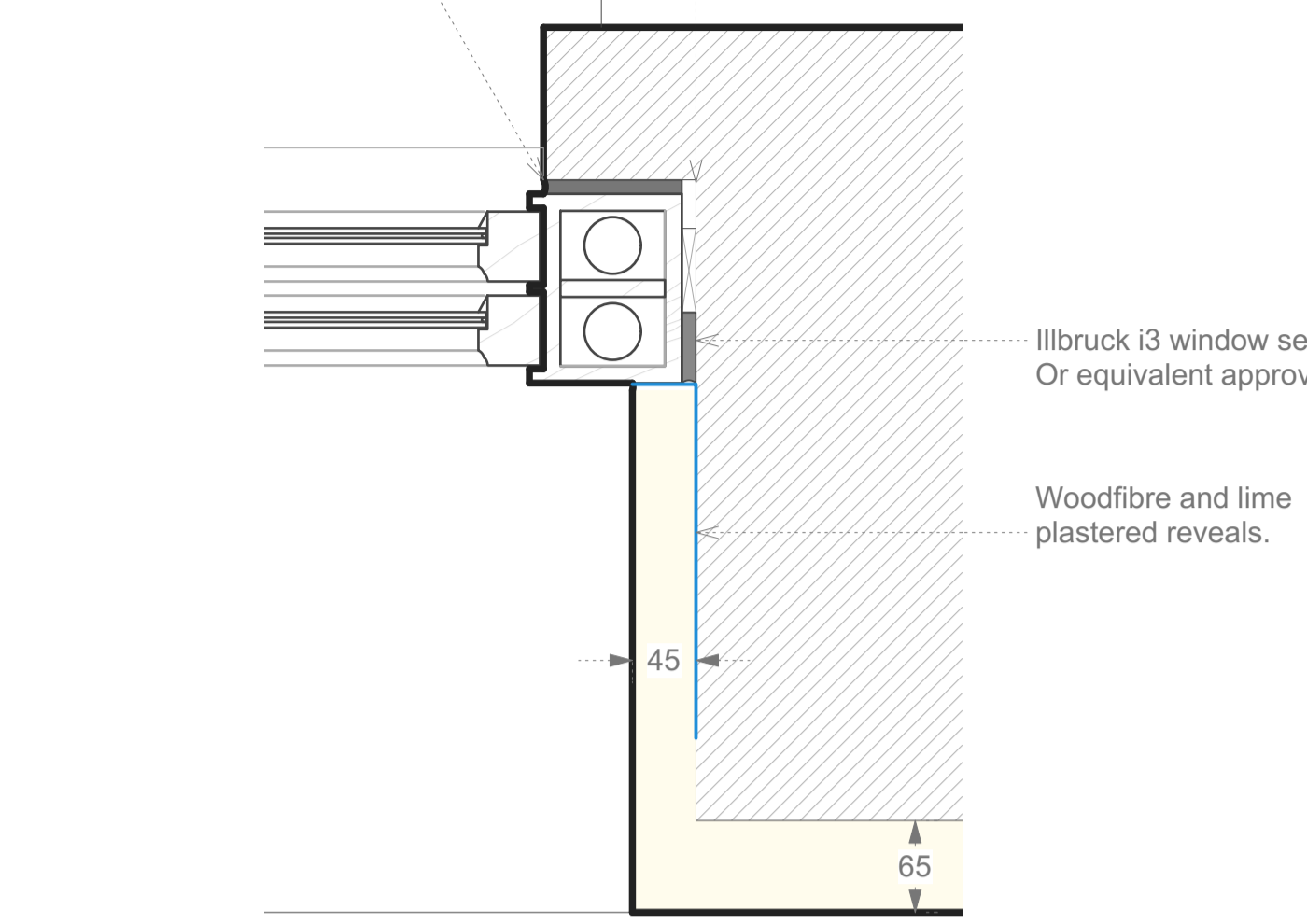
Timber sash window with integral glazing bars. Double glazed. Recessed behind masonry or timber frame as required. See window schedule for sizes.

brick or weatherboarded exterior face

Extg masonry and assumed large timber lintel. Detail varies per window.



Linseed putty finish atop i3 sealing system. New windows set within existing recess.



**General Notes**

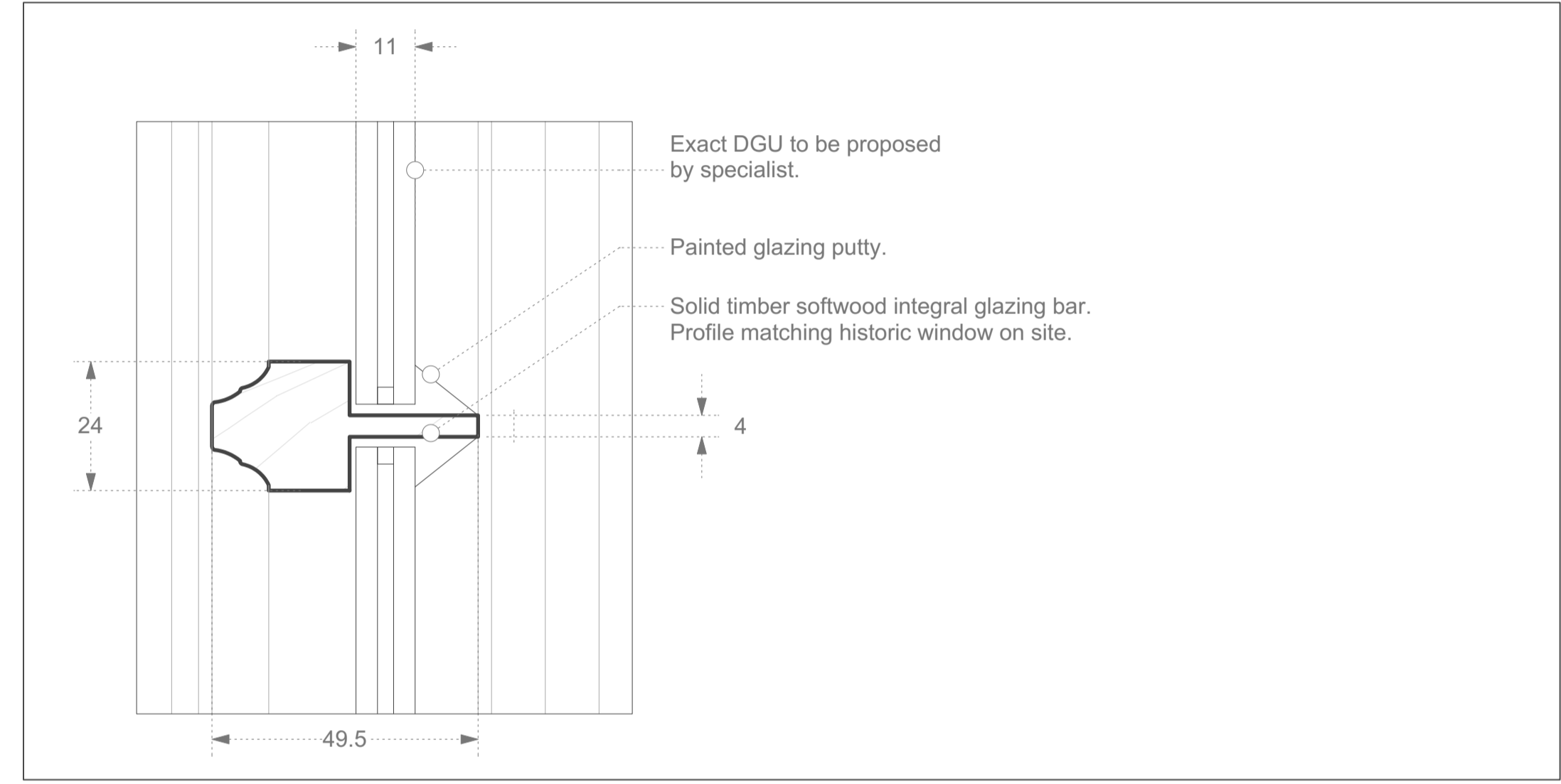
- All dimensions to be verified on site
- To be read in conjunction with all relevant documents
- In the event of discrepancy notify the Architect immediately
- All steel structural elements to be finished with intumescent coating. 30 minutes fire resistance. For all structural elements and connection see SE drawings.
- This document is copyright of Hugh Cullum Architects Ltd

**Issue Status**

- SK Sketch
- T Tender
- P Permissions
- D Design
- E Existing Condition
- C Contract

**Latest Revisions**

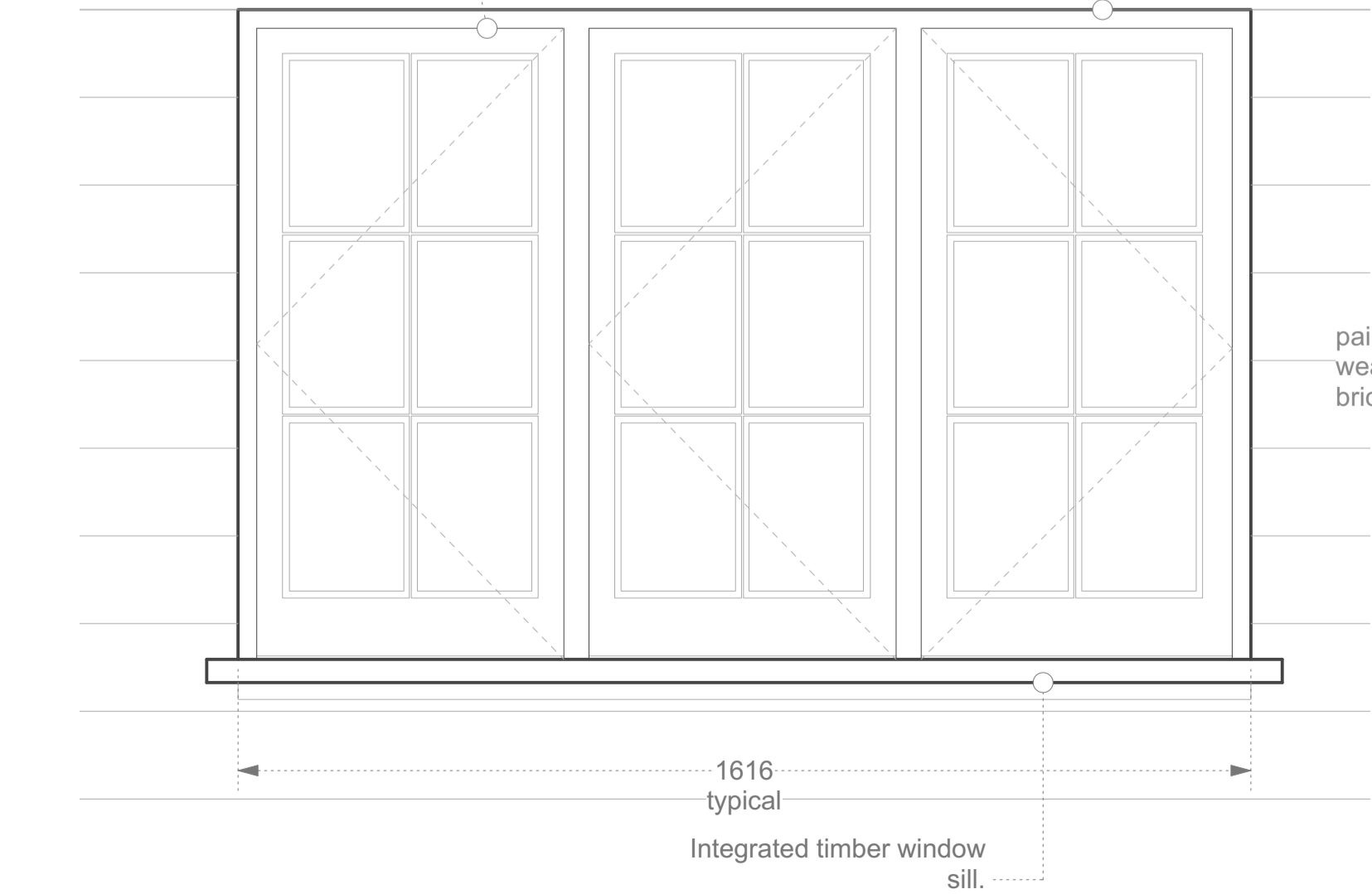
REV	NOTE	DATE	DRAWN



### CASEMENT WINDOWS

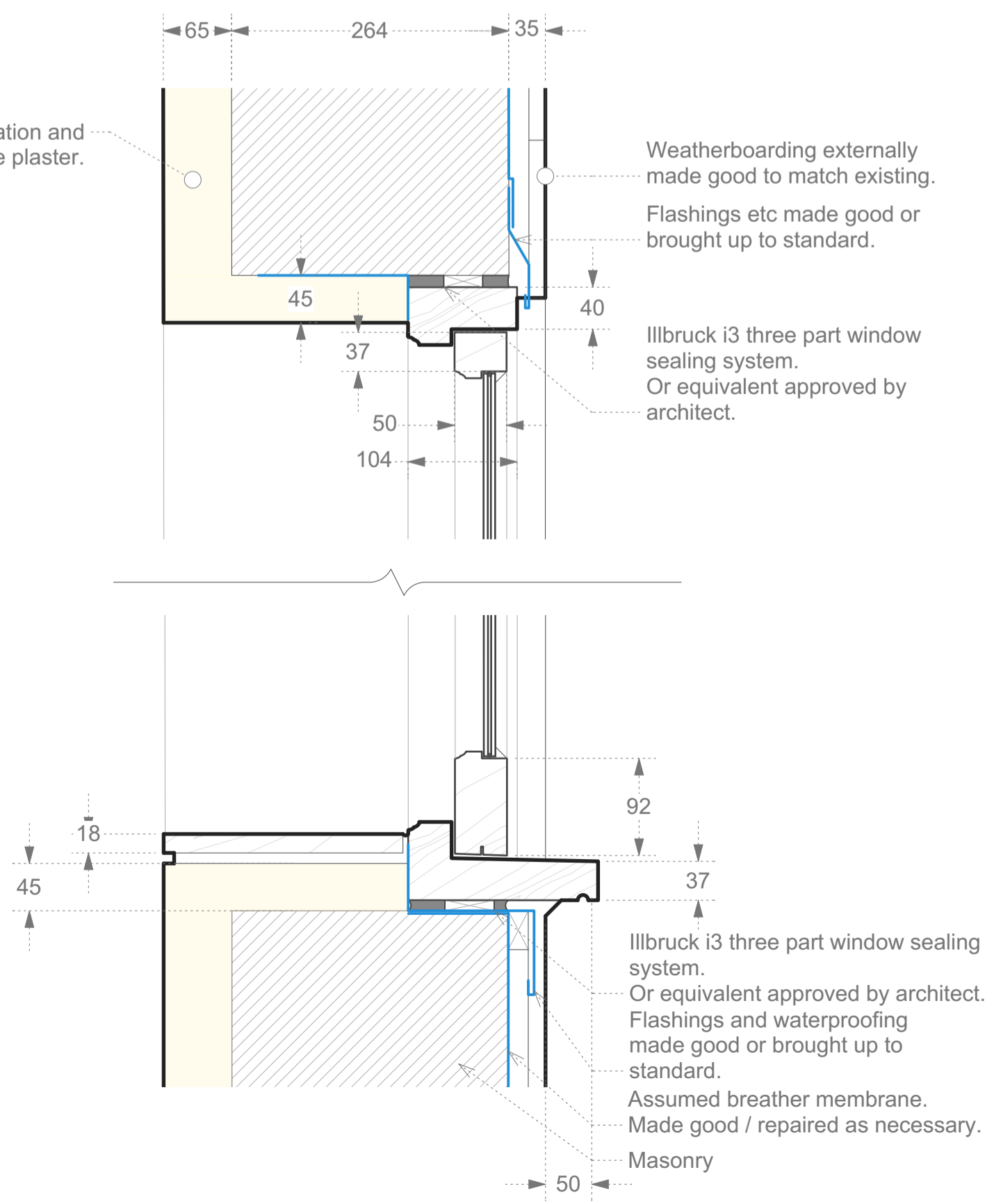
Flush timber casement windows. Three opening windows. Double glazed. White-painted to match facade.

Weatherboarding and flashings etc made good following installation.

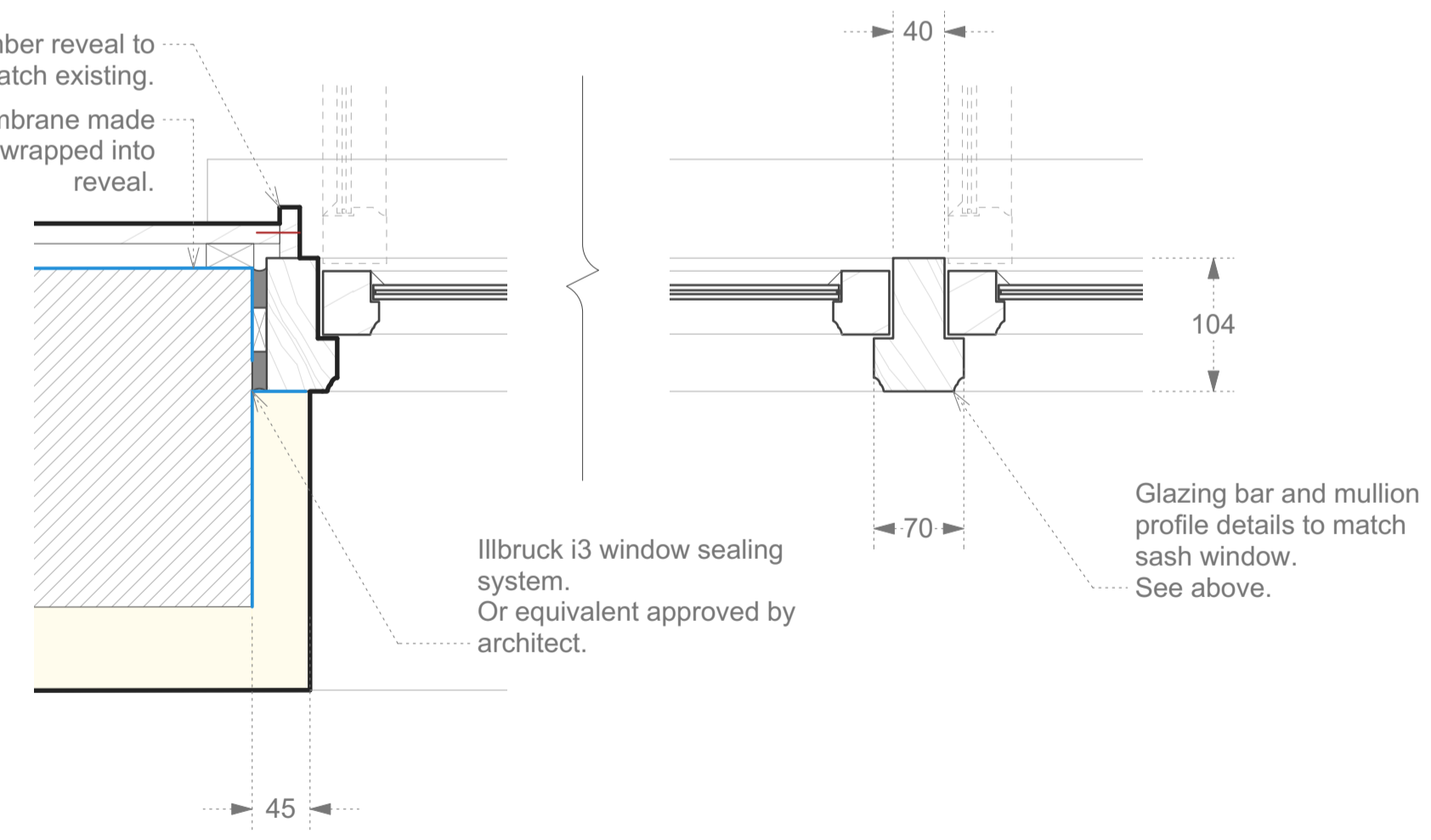


Painted weatherboard on brickwork

Woodfibre insulation and lime plaster.



Small timber reveal to match existing. Breather membrane made good and wrapped into reveal.



#### GENERAL SPECIFICATION NOTES

**HUGH CULLUM ARCHITECTS LTD**  
 Bloomsbury Design  
 61b Judd Street  
 London WC1H 9QT  
 t 020 7387 7647  
 f 020 7383 7645  
 mail@hughcullum.com

**St Mary's Richmond**  
 Planning (MMA)  
 General Arrangement  
 P - DETAIL - Windows - Typical  
 Scale at A1: AS NOTED  
 Published 22/10/2024  
 SMR01 - P600 ( )