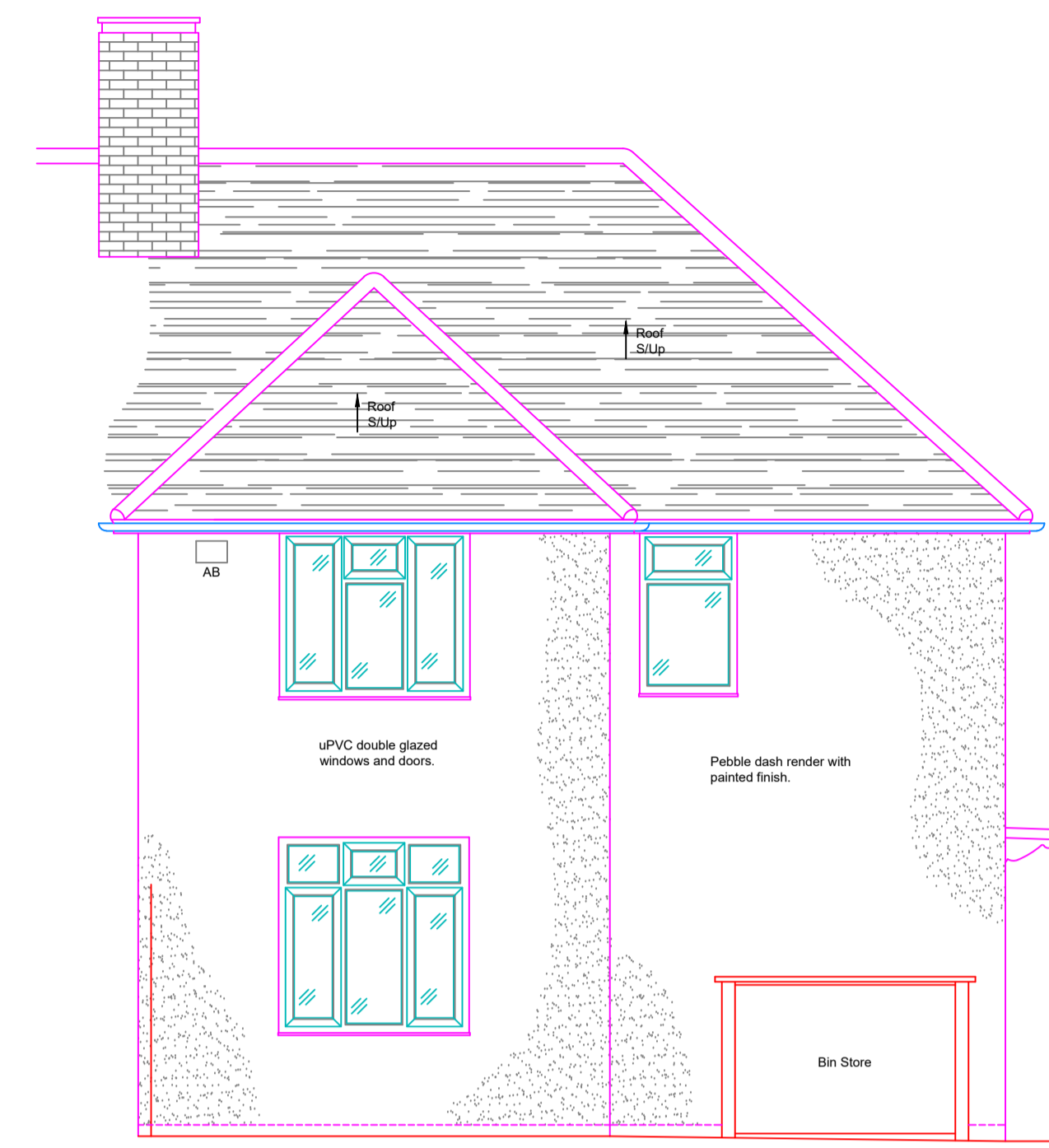


BUILDING SURVEY - LEGEND		
WINDOW DETAIL HEIGHTS	C	SUSPENDED CEILING
FLOOR TO GULL HEIGHT	CH	FALSE CEILING
CILL TO HEAD OF WINDOW	CH	CEILING
CILL TO SPRING	CH	SKYLIGHT
ARCHITECTURAL HEIGHTS	S	UNDERSE
FLOOR TO SPRING	H	FLOOR TO FLOOR HEIGHT
FLOOR TO HEAD	H	FLOOR LEVEL
GROUNDING	IC	TRUSSESS LEVEL
INSPECTION COVER	IC	SOFFIT LEVEL
COVER LEVEL	OL	BASE LEVEL
INVERT LEVEL	L	BASE LEVEL
GULL	G	RIDGE LEVEL
RAIN WATER PIPE	RWP	FINISHED FLOOR LEVEL
SOILVENT PIPE	SVP	SLOPE UP
VENT PIPE	VP	FLOOR TO CEILING HEIGHT
		VP

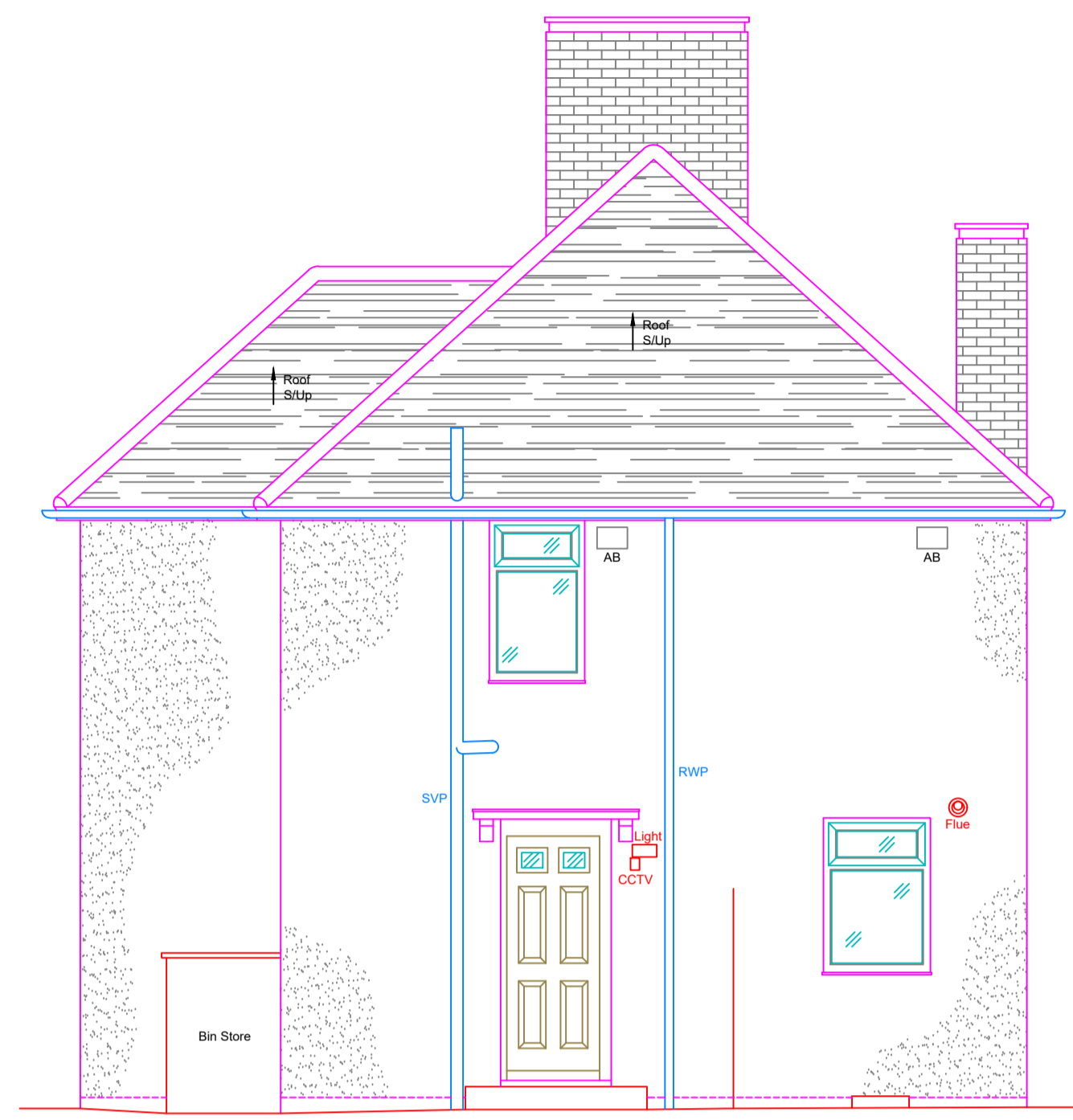
SERVICES - LEGEND	
⊙	TELEPHONE POINT
⊙	TV POINT
⊙	SINGLE SWITCHED SOCKET OUTLET
⊙	DOUBLE SWITCHED SOCKET OUTLET
⊙	WORKTOP HEIGHT SOCKET OUTLET
⊙	COOKER SWITCH
⊙	DATA SOCKET
⊙	FUSED SOCKET
⊙	FIRE ALARM BELL
⊙	BREAK GLASS CALL POINT
⊙	EXTRACTOR FAN
⊙	THERMOSTAT
⊙	RADIATOR
⊙	HEAT DETECTOR
⊙	SMOKE DETECTOR
⊙	LIGHT SWITCH
⊙	MULTIPLE GANG LIGHT SWITCH
⊙	MULTIPLE GANG DIMMER SWITCH
⊙	PULL CORD LIGHT SWITCH
⊙	LANDLORDS SUPPLY
⊙	EMERGENCY LIGHTING
⊙	STROP LIGHT
⊙	SPOT LIGHT
⊙	WALL LIGHT
⊙	SHOWER UNIT
⊙	DOOR BELL
⊙	GAS METER
⊙	ELECTRICITY METER
⊙	CONSUMER UNIT
⊙	SECURITY ALARM SENSOR
⊙	HOT WATER TANK
⊙	BOILER

Notes:
 All Levels are related to TBM Value: 10.00m
 Situated on Floor level of entrance hall as shown on Ground Floor Plan.
 North Point is indicative only.
 M&E has been visually observed and indicated where possible, positions are approximate only.
 All dimensions to be verified on site prior to construction.
 No dimensions to be scaled from this drawing.

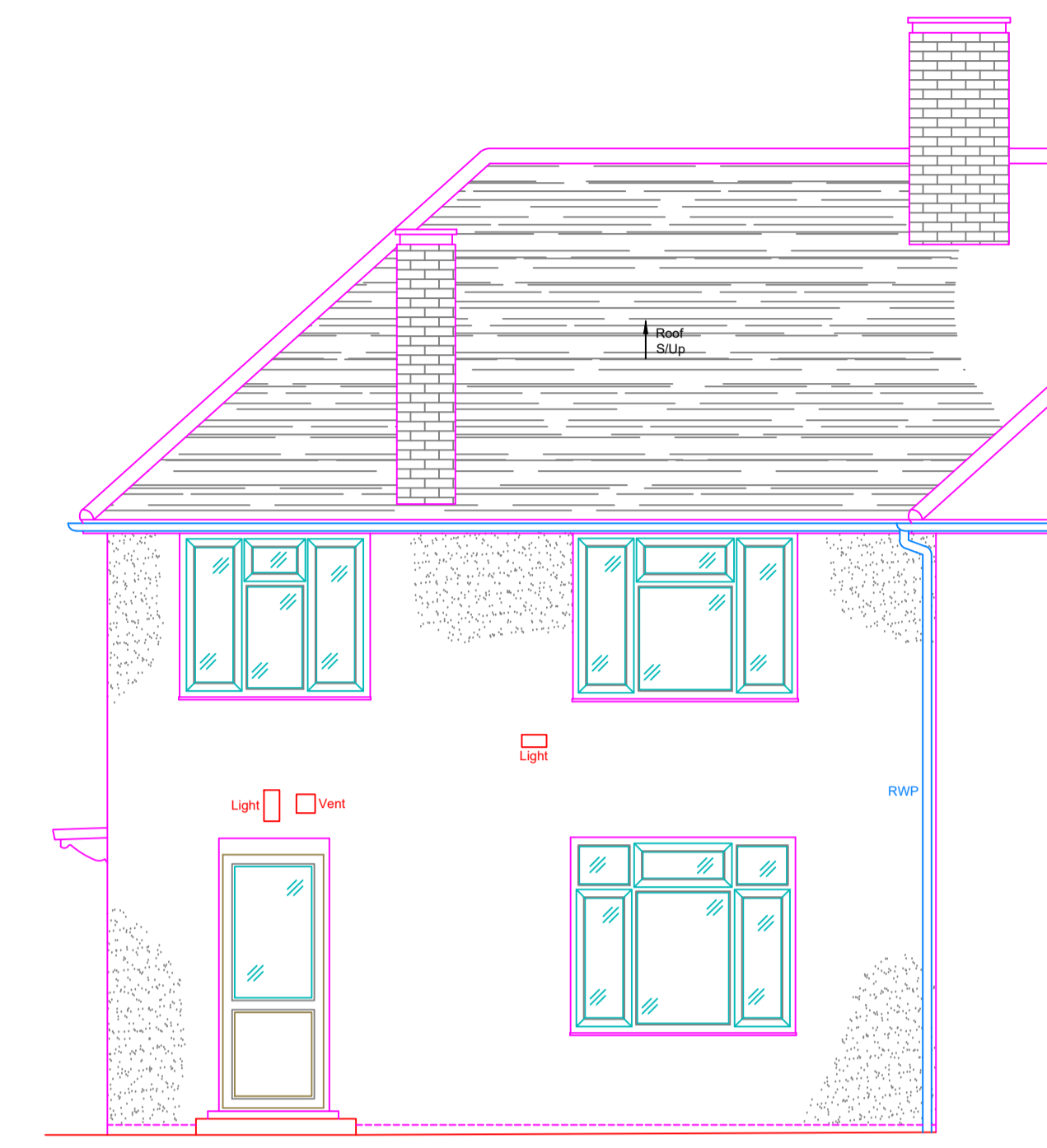
PLANNING ISSUE



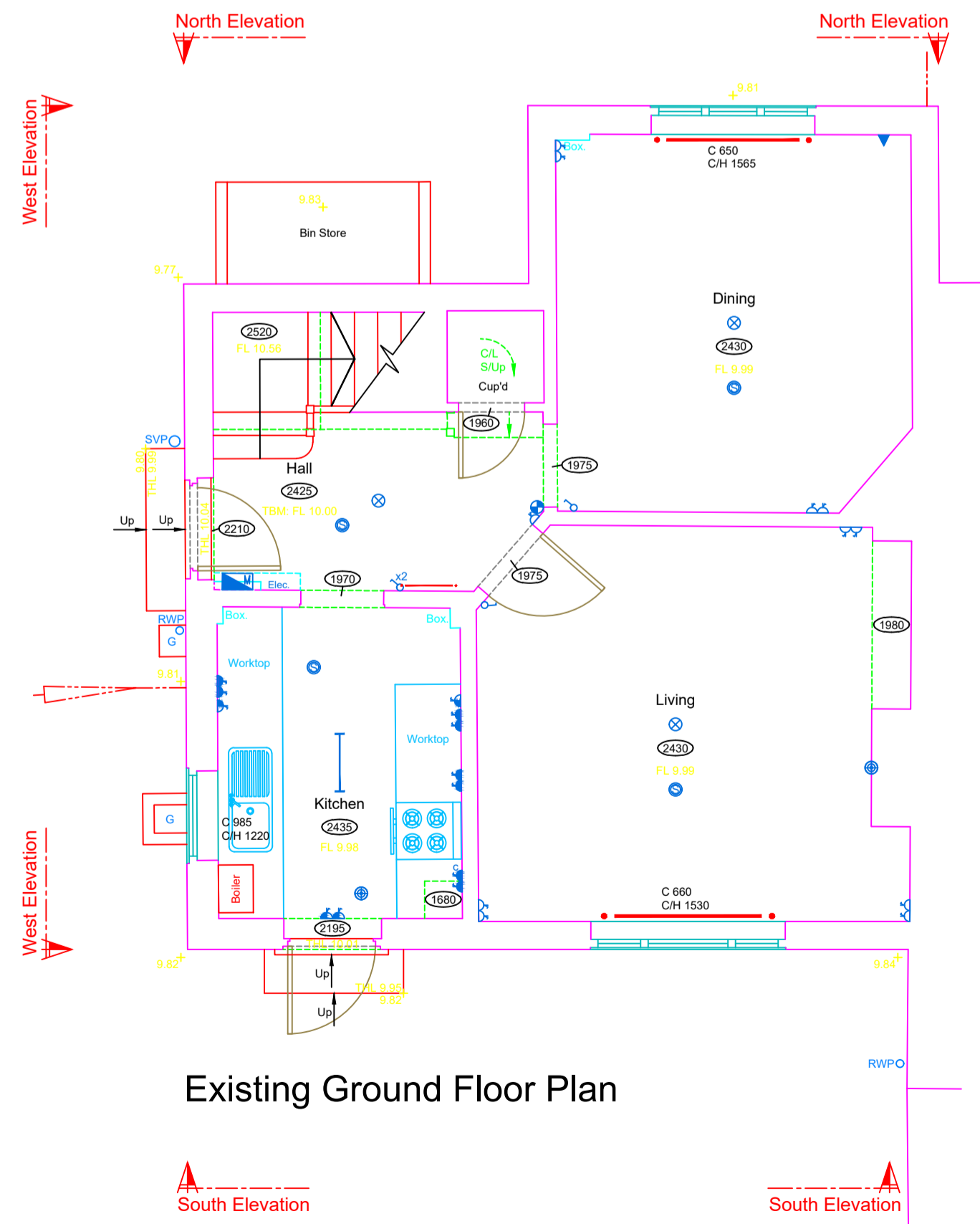
Datum: 8.00m



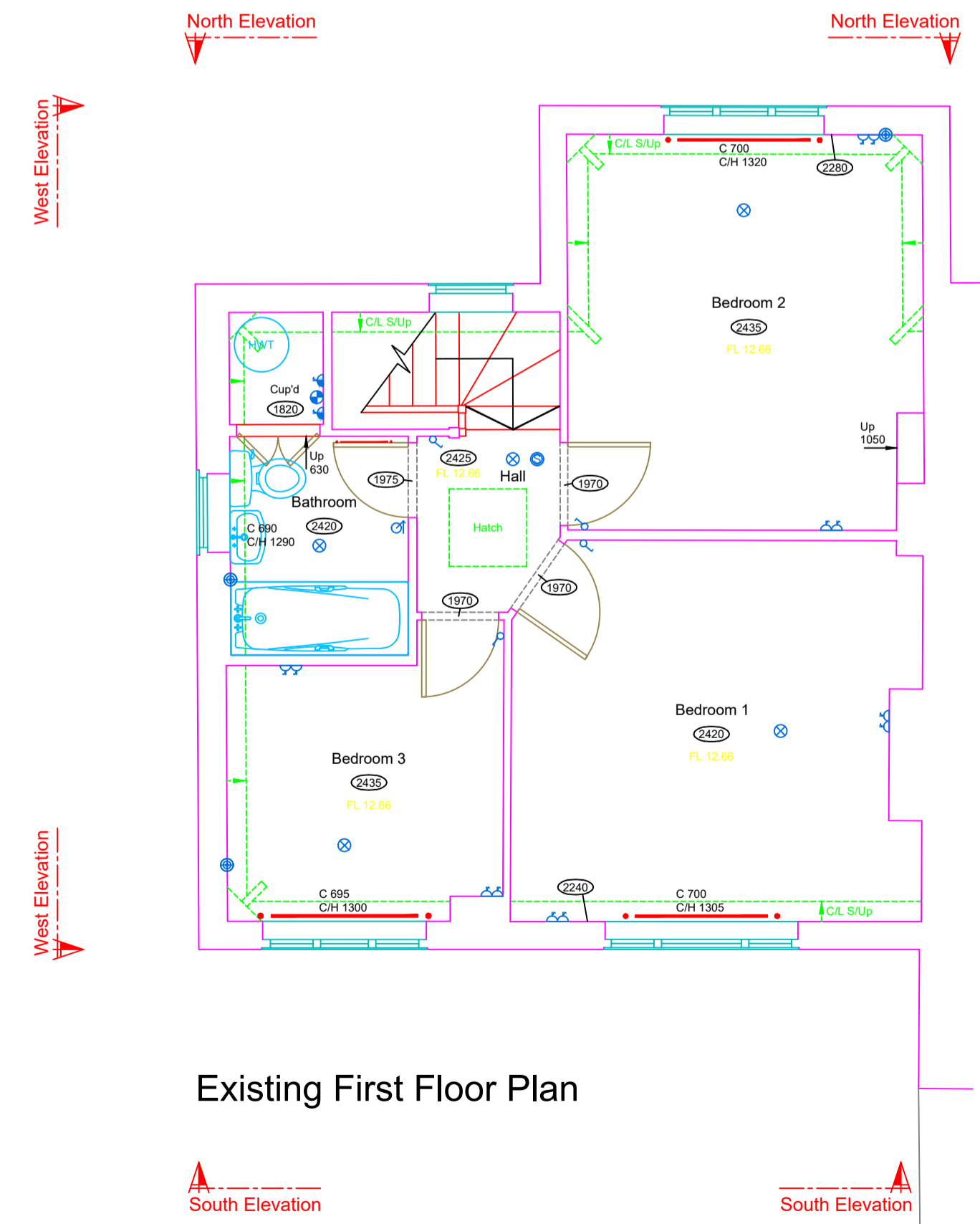
Datum: 8.00m



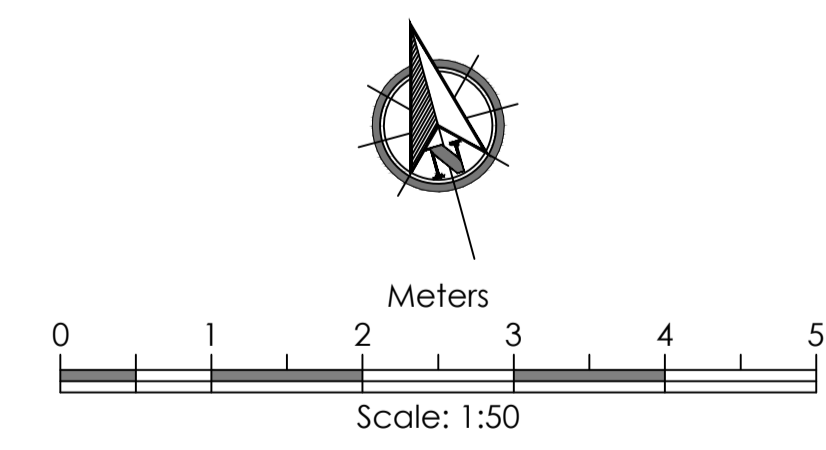
Datum: 8.00m



Existing Ground Floor Plan



Existing First Floor Plan



Rev.	Date

Do not scale from this drawing. Dimensions to be verified on site by contractor prior to commencement of work.
 This drawing is the copyright of the practice and may not be reproduced in part or in whole without the prior written consent of the practice.
 © 2021 Faithorn Farrell Timms LLP



Faithorn Farrell Timms
 10 Hunns Mere Way
 Woodingdean Business Park
 Brighton
 BN2 6AH
 T 01273 305027

Client: RHP

Project: 11 Barnes Avenue London

Drawing Title: Existing Floor Plans & Elevations

Date: Feb 2024 Scale: 1:50 @ A1

Drawn By: CP Checked By: IR

Project No.: PR-10267 Drawing No.: 101 Rev.: