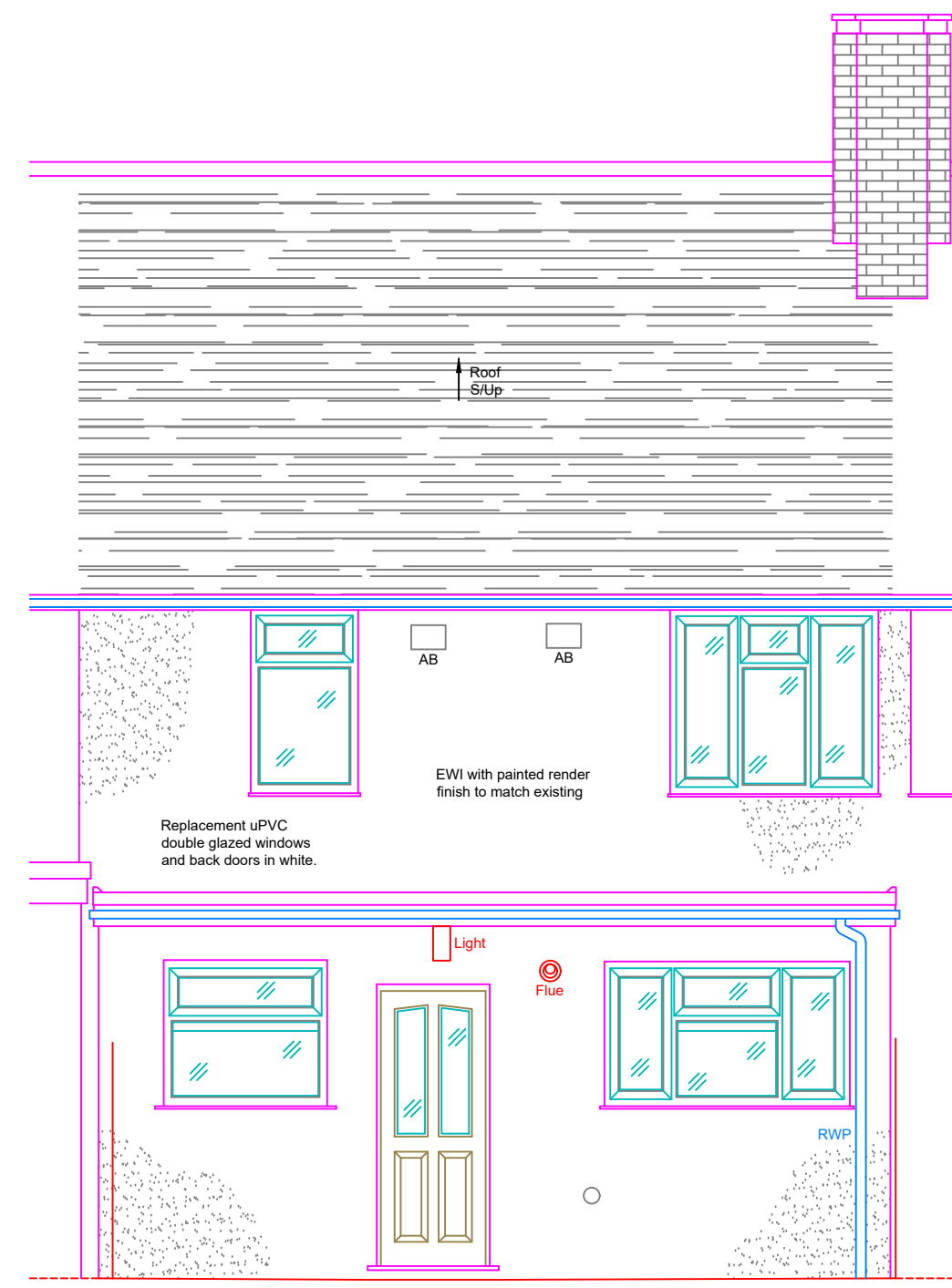




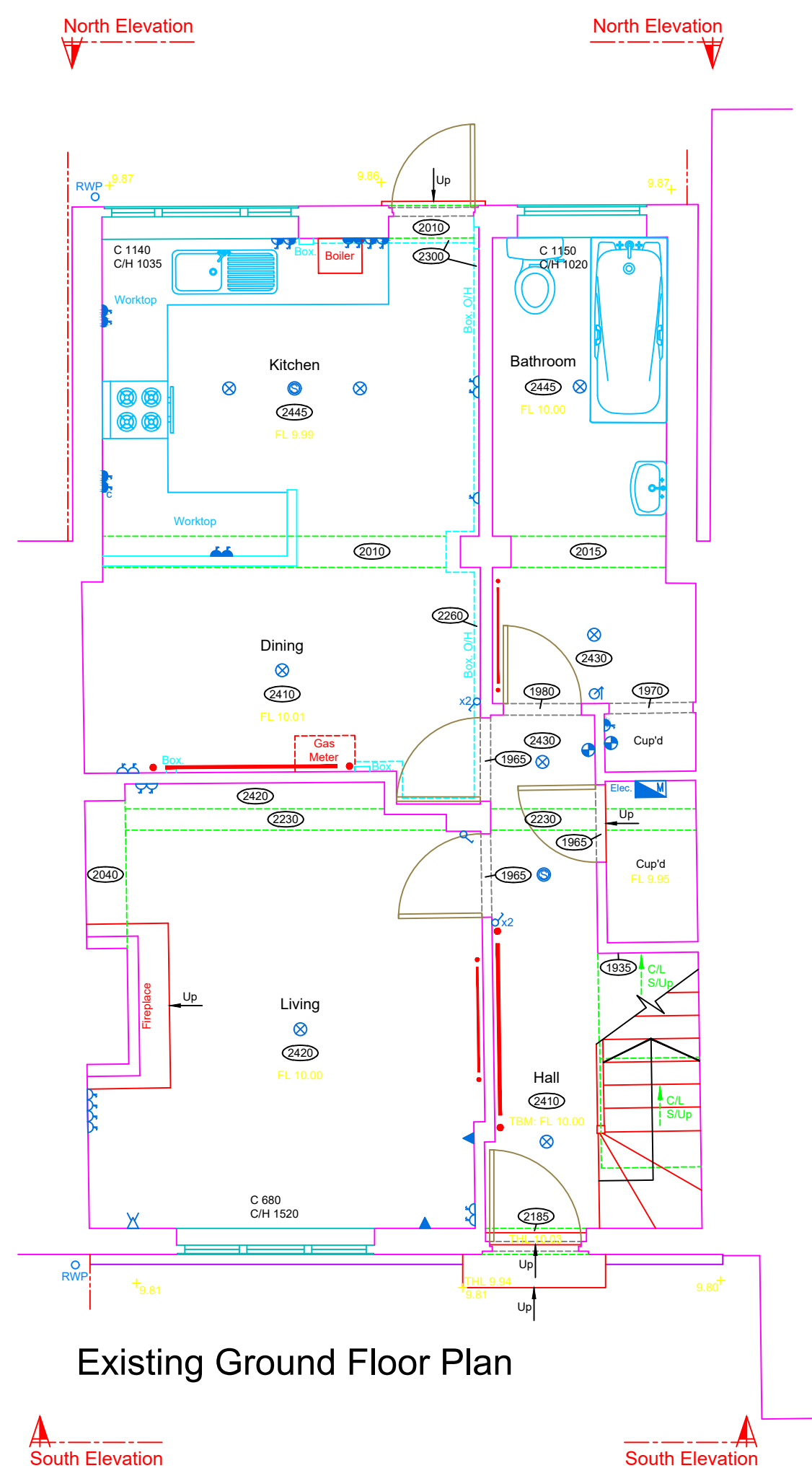
Existing South Elevation

Datum: 8.00m



Existing North Elevation

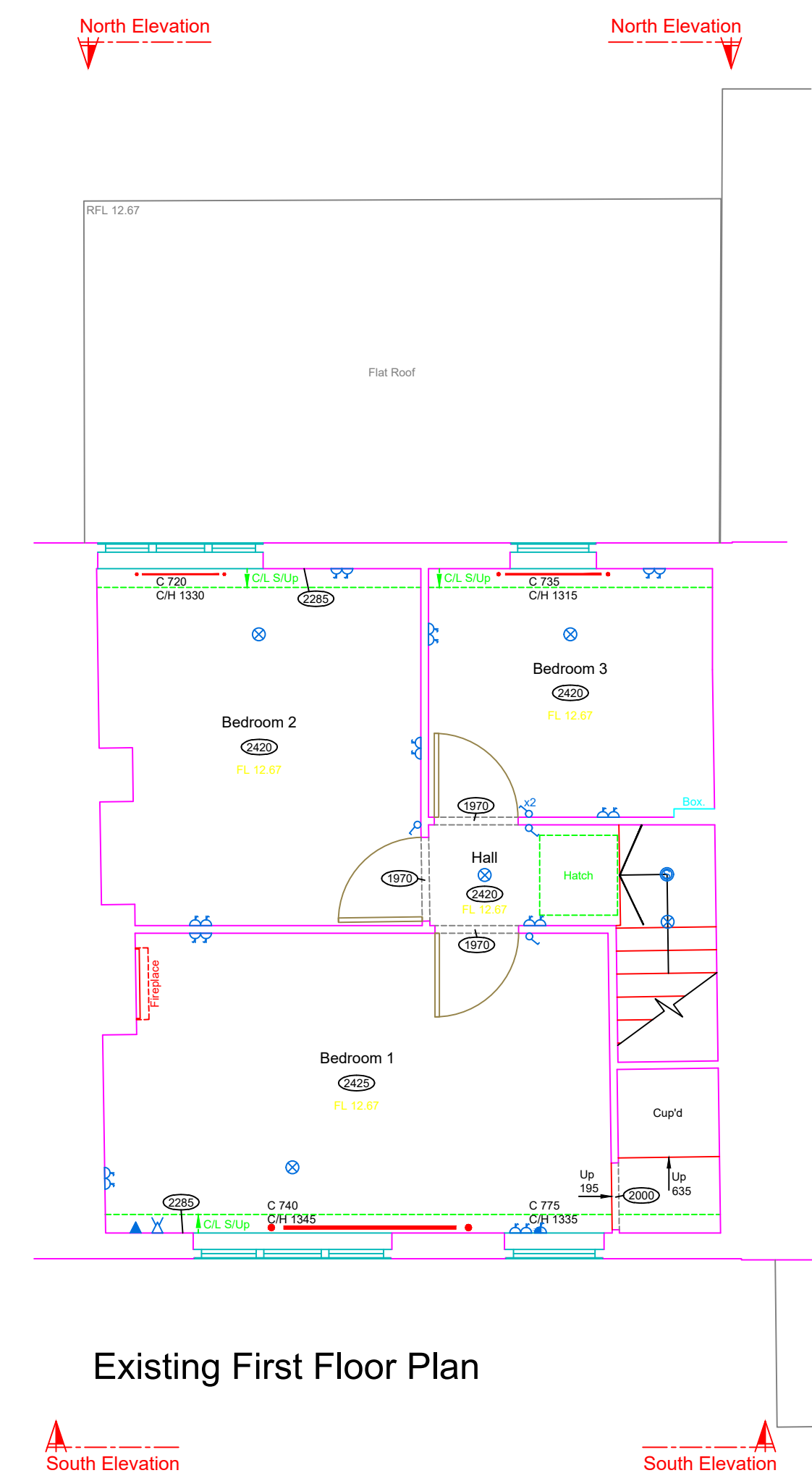
Datum: 8.00m



Existing Ground Floor Plan

South Elevation

South Elevation



Existing First Floor Plan

South Elevation

South Elevation

BUILDING SURVEY - LEGEND			
FLOOR TO CELL HEIGHTS	C	SUSPENDED CEILING	SC
CALL TO HEAD OF WINDOW	CH	FALSE CEILING	FC
CALL TO SPRING	C/S	CEILING	CL
ANNUAL METAL HEIGHTS		OVERHEAD	OH
FLOOR TO SPRING	S	UNDERSIDE	US
FLOOR TO HEAD	H	FLOOR TO FLOOR HEIGHT	FL-FL
		FLOOR LEVEL	FL
DRAINAGE		THRESHOLD LEVEL	THL
INSPECTION COVER	IC	BEAM LEVEL	BL
COVER LEVEL	CL	SOFFIT LEVEL	SFL
INVERT LEVEL	IL	BASED LEVEL	BL
GULLY	G	RIDGE LEVEL	RL
RAIN WATER PIPE	RWP	FINISHED FLOOR LEVEL	FFL
SOL VENT PIPE	SVP	SLOPE	SL
UP ARROW	UP	UP ARROW	UP
VENT PIPE	VP	FLOOR TO CEILING HEIGHT	FCH

SERVICES - LEGEND			
LIGHT FITTING	⊗	TELEPHONE POINT	⬆
PENDANT LIGHT FITTING	⊗	TV POINT	⬆
LANDLORDS SUPPLY	⊗	SINGLE SWITCHED SOCKET OUTLET	⊗
EMERGENCY LIGHTING	⊗	DOUBLE SWITCHED SOCKET OUTLET	⊗
STRIP LIGHT	⊗	WORKTOP HEIGHT SOCKET OUTLET	⊗
SPOT LIGHT	⊗	COOKER SWITCH	⊗
WALL LIGHT	⊗	DATA SOCKET	⊗
SHOWER UNIT	⊗	FUSED SOCKET	⊗
DOOR BELL	⊗	FIRE ALARM BELL	⊗
GAS METER	⊗	BREAK GLASS CALL POINT	⊗
ELECTRICITY METER	⊗	EXTRACTOR FAN	⊗
CONSUMER UNIT	⊗	THERMISTAT	⊗
SECURITY ALARM SENSOR	⊗	RADIATOR	⊗
HOT WATER TANK	⊗	HEAT DETECTOR	⊗
BOILER	⊗	SMOKE DETECTOR	⊗
		LIGHT SWITCH	⊗
		MULTIPLE GANG LIGHT SWITCH	⊗
		MULTIPLE GANG DIMMER SWITCH	⊗
		PULL CORD LIGHT SWITCH	⊗

Notes:
All Levels are related to TBM Value: 10.00m
Sited on Floor level of entrance hall as shown on Ground Floor Plan.

North Point is indicative only.
M&E has been visually observed and indicated where possible, positions are approximate only.

All dimensions to be verified on site prior to construction.
No dimensions to be scaled from this drawing.

PLANNING ISSUE

Rev.	Date

Do not scale from this drawing. Dimensions to be verified on site by contractor prior to commencement of work.
This drawing is the copyright of the practice and may not be reproduced in part or in whole without the prior written consent of the practice.
© 2021 Faithorn Farrell Timms LLP

Faithorn Farrell Timms
10 Hunns Mere Way
Woodingdean Business Park
Brighton
BN2 6AH
T 01273 305027

Client: RHP

Project: 16 Barnes Avenue London

Drawing Title: Proposed Floor Plans & Elevations

Date: Nov 2024 Scale: 1:50 @ A1

Drawn By: CP Checked By: IR

Project No. PR-10267 Drawing No. 104 Rev.

