

BUILDING SURVEY - LEGEND			
FLOOR DETAIL HEIGHTS	C	FALSE CEILING	S/C
FLOOR TO CEILING	CH	CEILING	HC
CALL TO SPRING	CS	SKYLIGHT	SL
ARCHITECTURAL HEIGHTS	U	UNDERFLOOR	UF
FLOOR TO SPRING	IS	FLOOR TO FLOOR HEIGHT	FL
FLOOR TO HEAD	HS	FLOOR TO HEAD	FLH
DRAINAGE	IC	THRESHOLD LEVEL	TL
INSPECTION COVER	IC	BEAM LEVEL	BL
COVER LEVEL	CL	SOFFIT LEVEL	SFL
INVERT LEVEL	IL	EVES LEVEL	EL
RAIN WATER PIPE	RWP	ROOF LEVEL	RL
SOIL VENT PIPE	SVP	FINISHED FLOOR LEVEL	FFL
UP ARROW	UP	UP ARROW	UP
VENT PIPE	VP	FLOOR TO CEILING HEIGHT	FCH

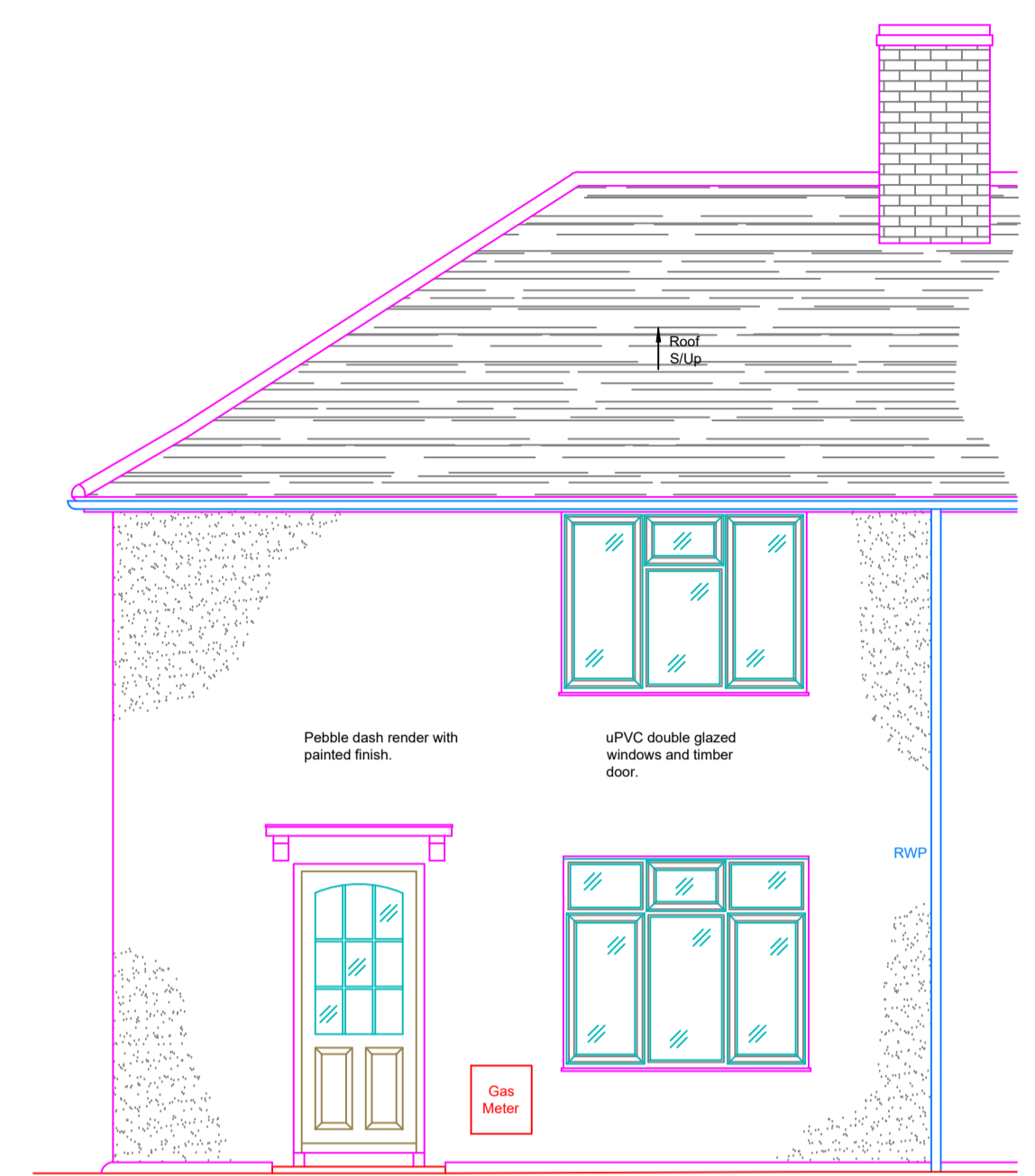
SERVICES - LEGEND			
⊗	LIGHT FITTING	▲	TELEPHONE POINT
⊗	PENDANT LIGHT FITTING	⊗	TV POINT
⊗	LANDLORDS SUPPLY	⊗	SINGLE SWITCHED SOCKET OUTLET
⊗	EMERGENCY LIGHTING	⊗	DOUBLE SWITCHED SOCKET OUTLET
⊗	STRIP LIGHT	⊗	WORKTOP HEIGHT SOCKET OUTLET
⊗	SPAT LIGHT	⊗	COOKER SWITCH
⊗	WALL LIGHT	⊗	DATA SOCKET
⊗	SHAVER UNIT	⊗	FUSED SOCKET
⊗	DOOR BELL	⊗	FIRE ALARM BELL
⊗	GAS METER	⊗	BREAK GLASS CALL POINT
⊗	ELECTRICITY METER	⊗	EXTRACTOR FAN
⊗	CONSUMER UNIT	⊗	THERMOSTAT
⊗	SECURITY ALARM SENSOR	⊗	RADIATOR
⊗		⊗	HEAT DETECTOR
⊗		⊗	SMOKE DETECTOR
⊗		⊗	LIGHT SWITCH
⊗		⊗	MULTIPLE GANG LIGHT SWITCH
⊗		⊗	MULTIPLE GANG DIMMER SWITCH
⊗		⊗	FULL CORD LIGHT SWITCH
⊗		⊗	

Notes:
 All Levels are related to TBM Value: 10.00m
 Situated on Floor level of entrance hall as shown on Ground Floor Plan.

North Point is indicative only.
 M&E has been visually observed and indicated where possible, positions are approximate only.

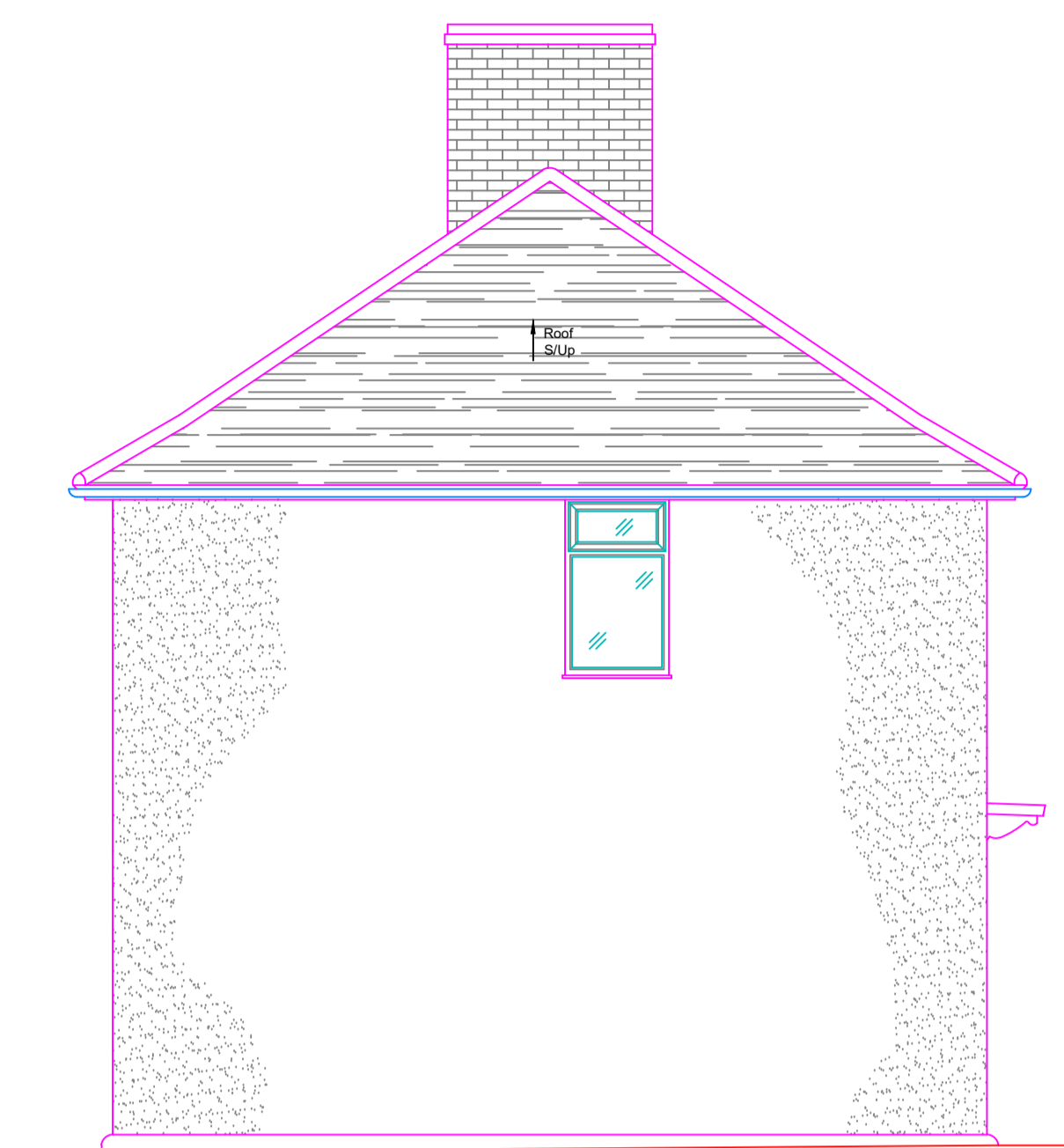
All dimensions to be verified on site prior to construction.
 No dimensions to be scaled from this drawing.

PLANNING
ISSUE



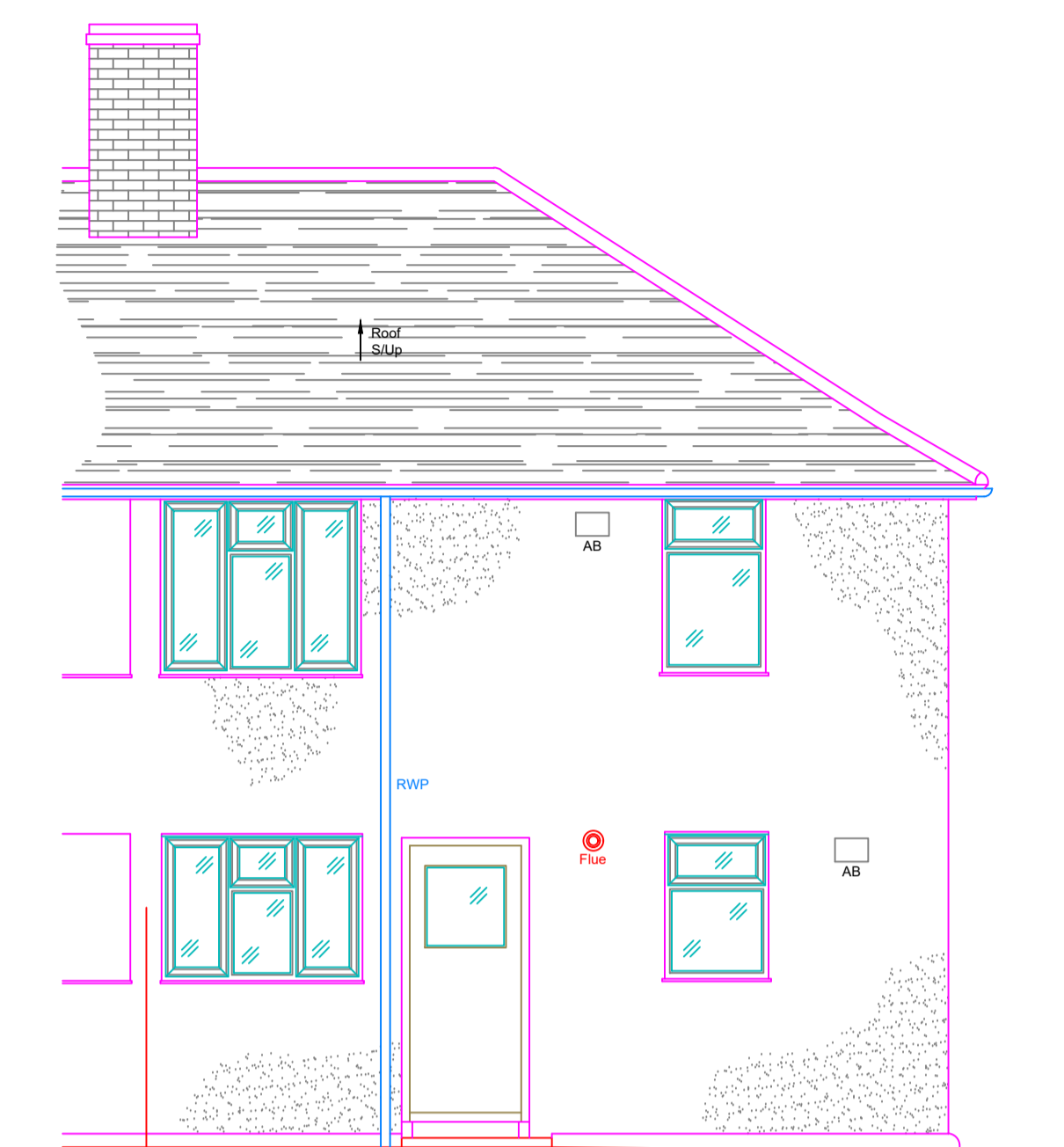
Existing East Elevation

Datum: 8.00m



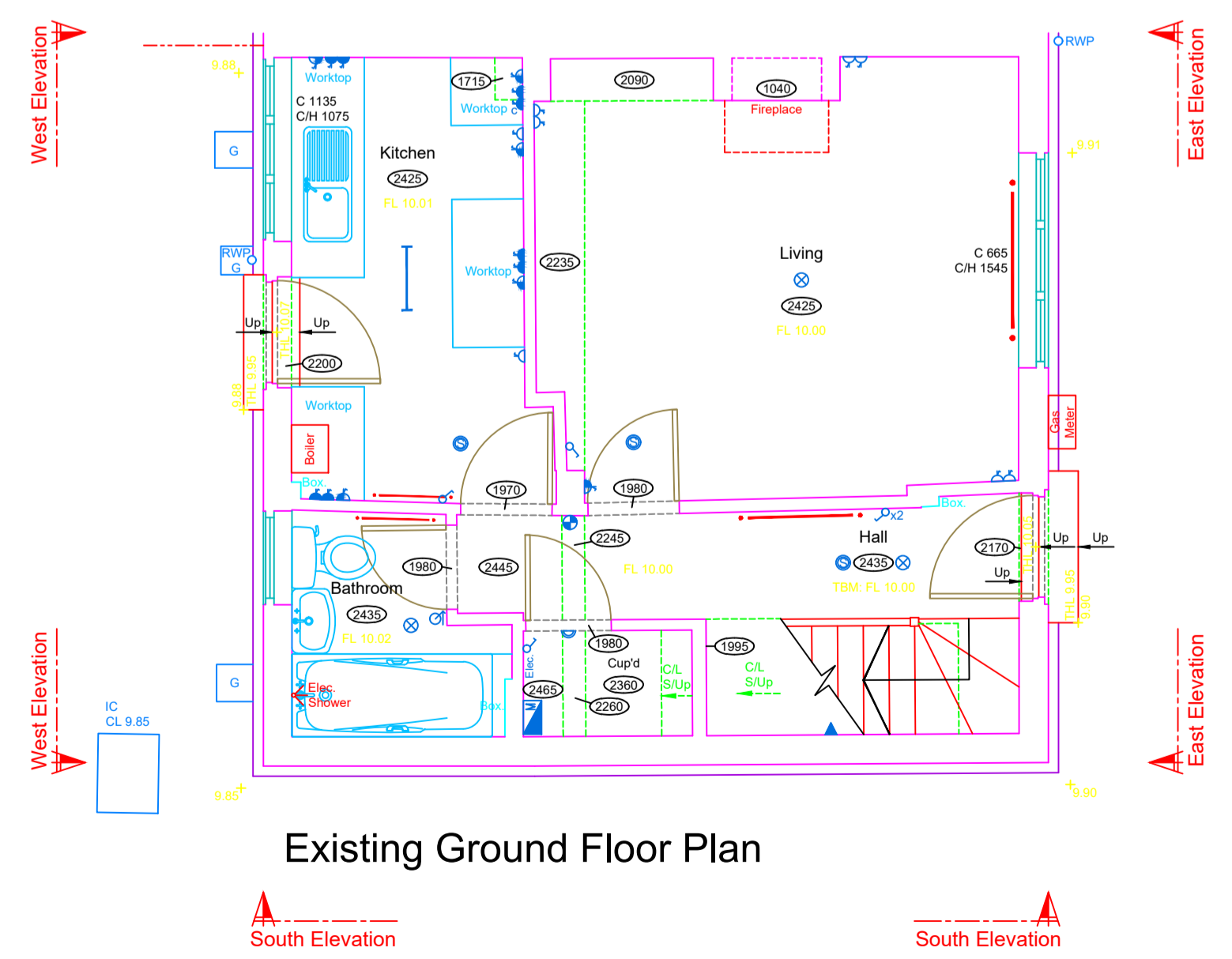
Existing South Elevation

Datum: 8.00m

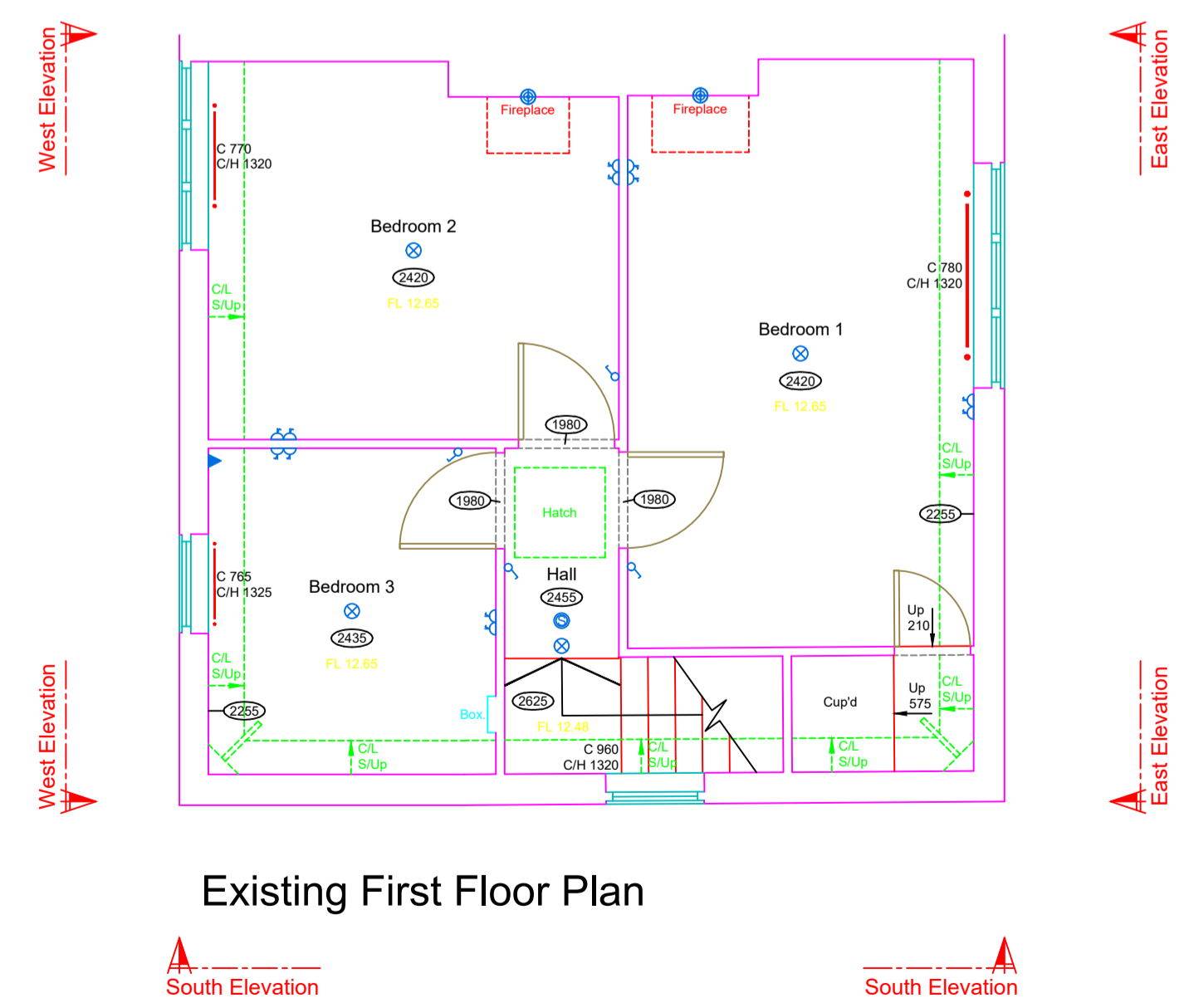


Existing West Elevation

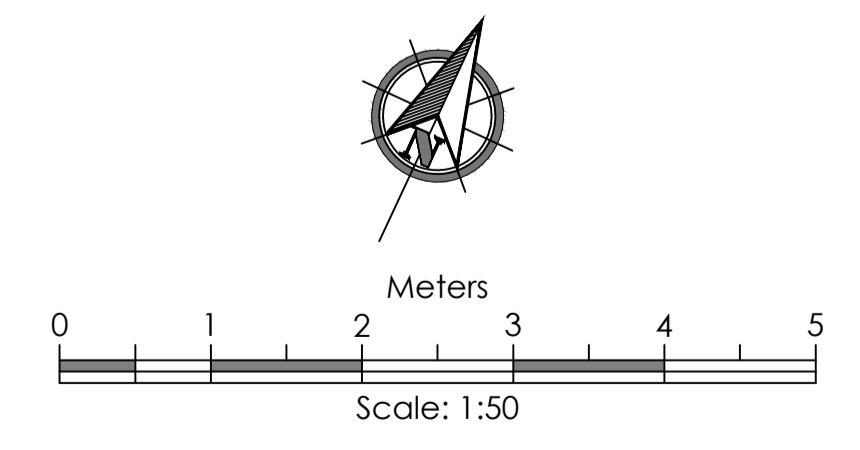
Datum: 8.00m



Existing Ground Floor Plan




Existing First Floor Plan



Rev.	Date

Do not scale from this drawing. Dimensions to be verified on site by contractor prior to commencement of work.
 This drawing is the copyright of the practice and may not be reproduced in part or in whole without the prior written consent of the practice.
 © 2021 Faithorn Farrell Timms LLP



Faithorn Farrell Timms
 10 Hunns Mere Way
 Woodingdean Business Park
 Brighton
 BN2 6AH
 T 01273 305027

Client	RHP	
Project	69 Howsman Road London	
Drawing Title	Existing Floor Plans & Elevations	
Date	Jan 2024	Scale 1:50 @ A1
Drawn By	CP	Checked By IR
Project No.	PR-10267	Drawing No. 107
		Rev.