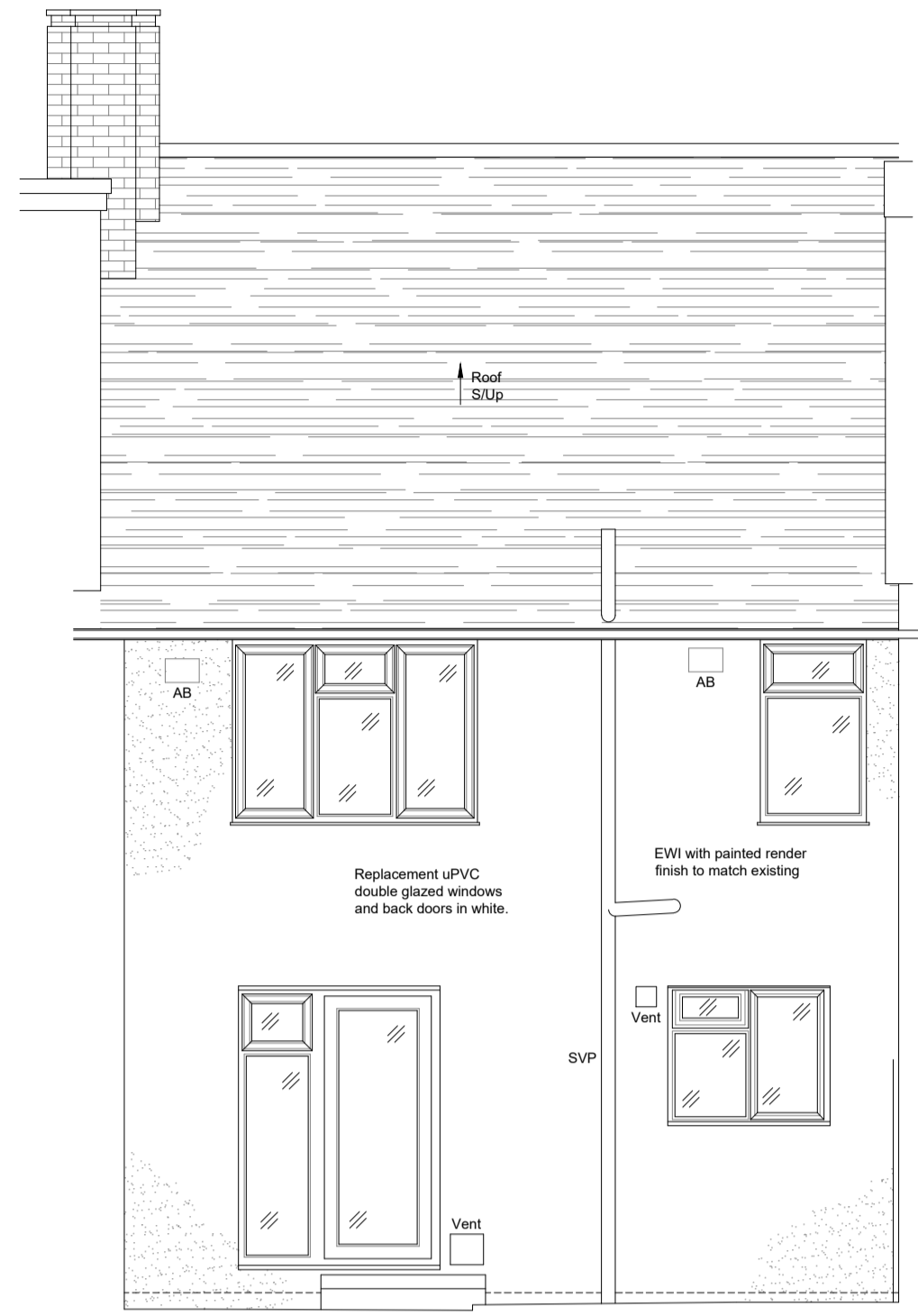




Proposed North Elevation

Datum: 8.00m



Proposed South Elevation

Datum: 8.00m

BUILDING SURVEY - LEGEND			
WINDOW DETAIL HEIGHTS	E	SUSPENDED CEILING	S/C
FLOOR TO CEILING HEIGHT	FC	FALSE CEILING	FC
CALL TO HEAD OF WINDOW	CH	CEILING	CL
CALL TO SPRING	CS	SKYLIGHT	SL
ARCH DETAIL HEIGHTS		UNDERSEAL	US
FLOOR TO SPRING	S	OVERHEAD	OH
FLOOR TO HEAD	H	FLOOR TO FLOOR HEIGHT	FL-FL
		FLOOR LEVEL	FL
		THRESHOLD LEVEL	THL
		BEAR LEVEL	BSL
INSPECTION COVER	IC	SOFFIT LEVEL	SFL
COVER LEVEL	CL	RAVINE LEVEL	RL
INVERT LEVEL	I	RIDGE LEVEL	RL
RAIN WATER PIPE	RWP	FINISHED FLOOR LEVEL	FFL
SOIL VENT PIPE	SVP	UP ARROW	SAU
VENT PIPE	VP	FLOOR TO CEILING HEIGHT	CC

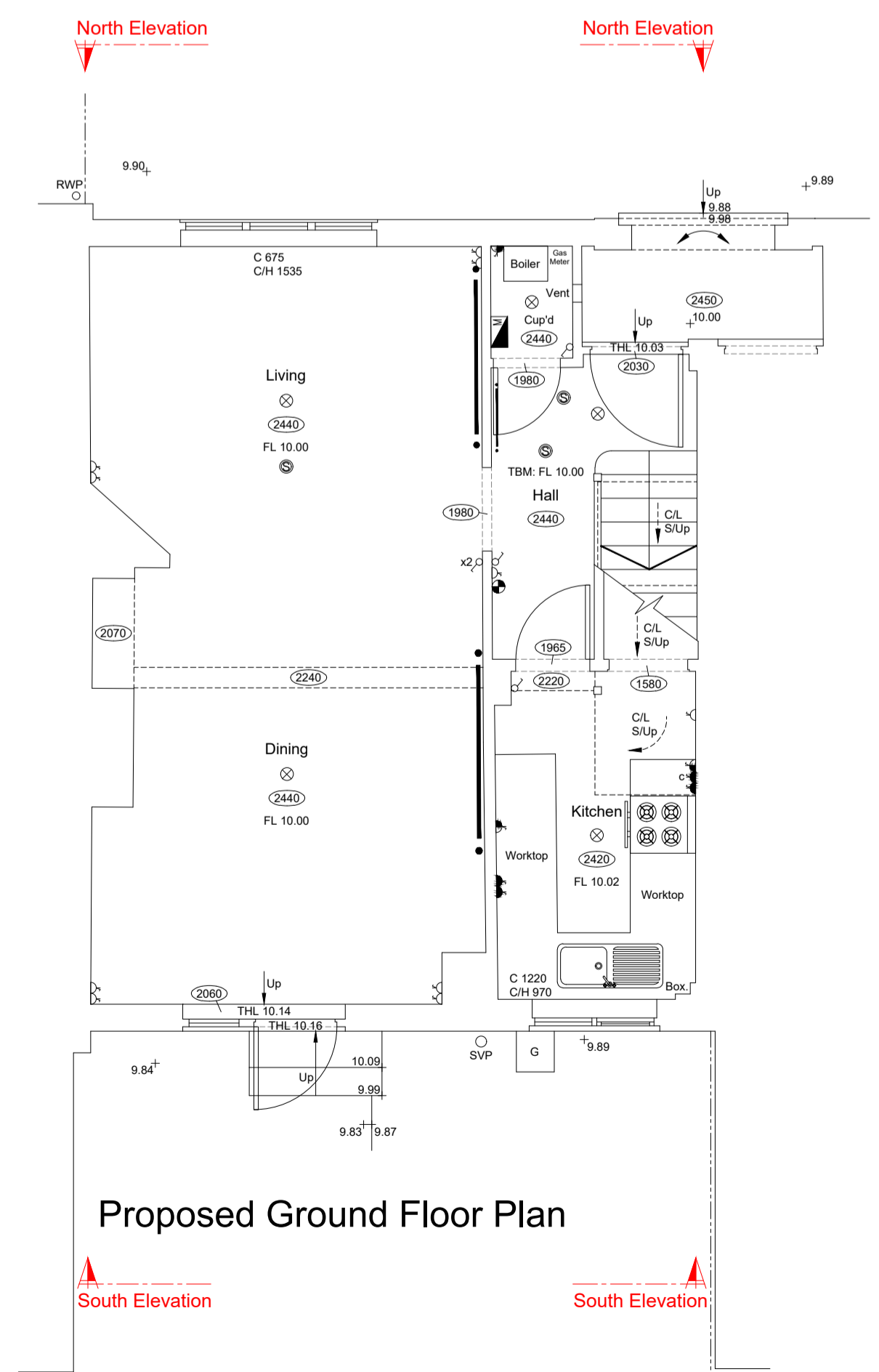
  

SERVICES - LEGEND			
⊗	LIGHT FITTING	▲	TELEPHONE POINT
⊙	PENDANT LIGHT FITTING	⊗	TV POINT
⊕	LANDLORDS SUPPLY	⊕	SINGLE SWITCHED SOCKET OUTLET
⊖	EMERGENCY LIGHTING	⊖	DOUBLE SWITCHED SOCKET OUTLET
⊗	STRIP LIGHT	▲	WORKTOP HEIGHT SOCKET OUTLET
⊙	SPOT LIGHT	▲	COOKER SWITCH
⊕	WALL LIGHT	⊕	DATA SOCKET
⊖	SHOWER UNIT	⊖	FUSED SOCKET
⊗	DOOR BELL	⊗	FIRE ALARM BELL
⊕	GAS METER	⊕	BREAK GLASS CALL POINT
⊖	ELECTRICITY METER	⊖	EXTRACTOR FAN
⊗	CONSUMER UNIT	⊗	THERMISTAT
⊕	SECURITY ALARM SENSOR	⊕	RADIATOR
⊖	HOT WATER TANK	⊖	HEAT DETECTOR
⊗	BOILER	⊗	SMOKE DETECTOR
		⊕	LIGHT SWITCH
		⊖	MULTIPLE GANG LIGHT SWITCH
		⊗	MULTIPLE GANG DIMMER SWITCH
		⊕	PULL CORD LIGHT SWITCH

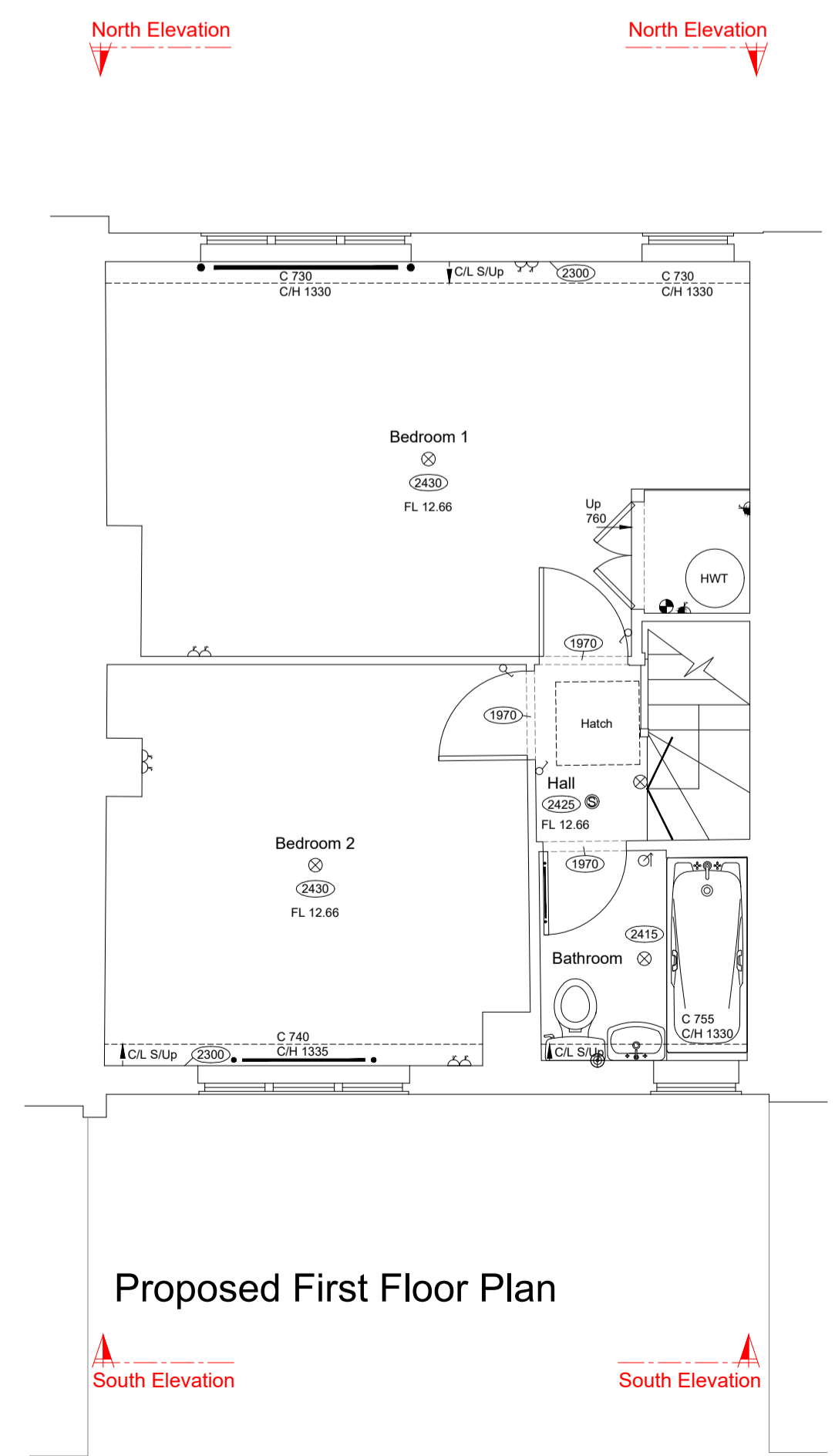
Notes:  
 All Levels are related to TBM Value: 10.00m  
 Situated on Floor level of entrance hall as shown on Ground Floor Plan.

North Point is indicative only.  
 M&E has been visually observed and indicated where possible, positions are approximate only.

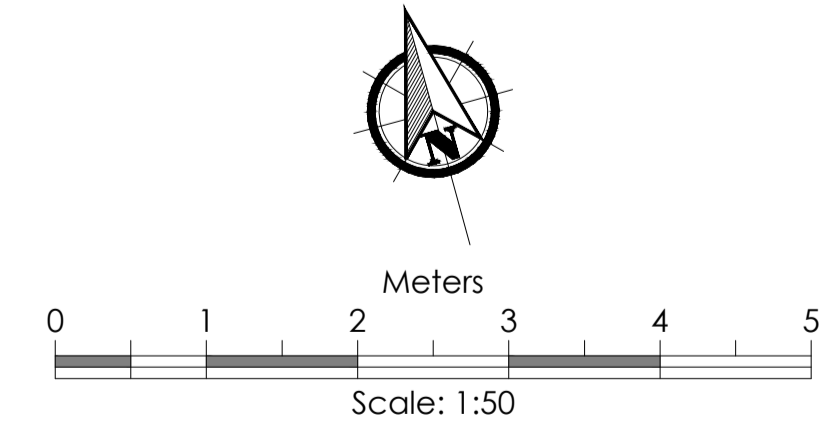
All dimensions to be verified on site prior to construction.  
 No dimensions to be scaled from this drawing.



Proposed Ground Floor Plan



Proposed First Floor Plan



Rev.	Date
A - Amended annotation	09/12/24

Do not scale from this drawing. Dimensions to be verified on site by contractor prior to commencement of work.  
 This drawing is the copyright of the practice and may not be reproduced in part or in whole without the prior written consent of the practice.  
 © 2021 Faithorn Farrell Timms LLP



**Faithorn Farrell Timms**  
 10 Hunns Mere Way  
 Woodingdean Business Park  
 Brighton  
 BN2 6AH  
 T 01273 305027

Client: RHP

Project: 23 Barnes Avenue London

Drawing Title: Proposed Floor Plans & Elevations

Date	Scale
Nov 2024	1:50 @ A1
Drawn By: KH	Checked By: IR
Project No. PR-10267	Drawing No. 106 Rev. A