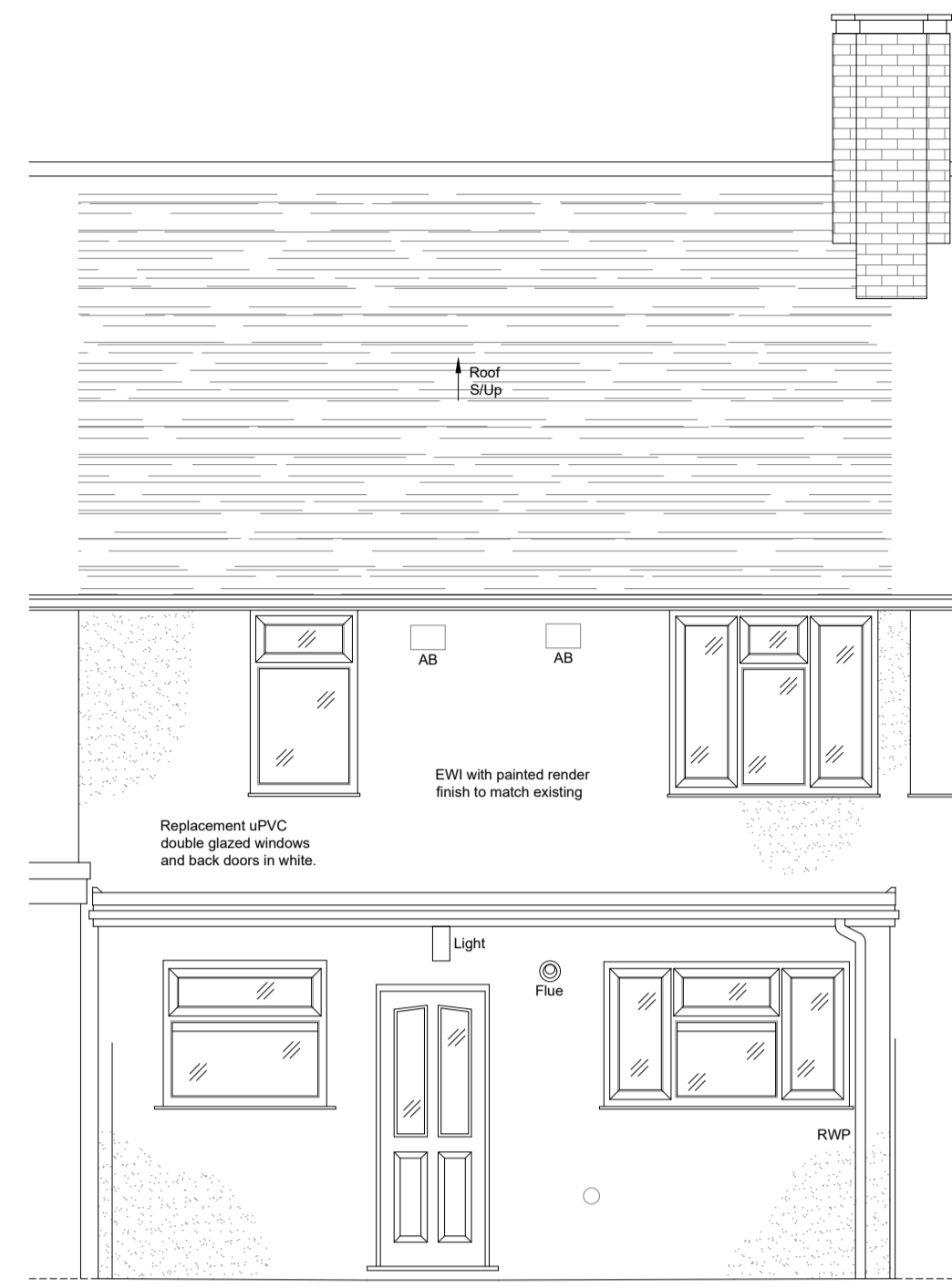




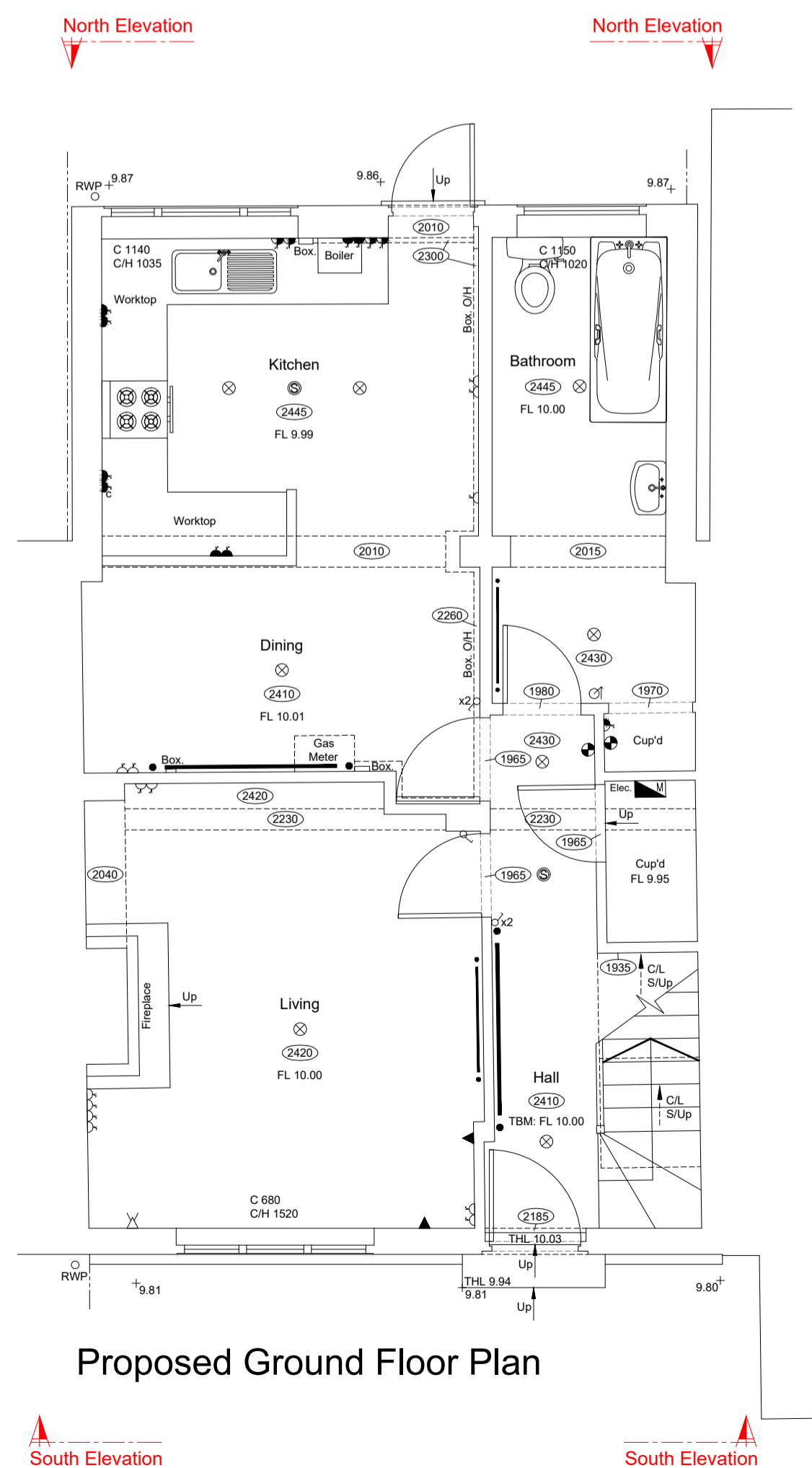
Proposed South Elevation

Datum: 8.00m



Proposed North Elevation

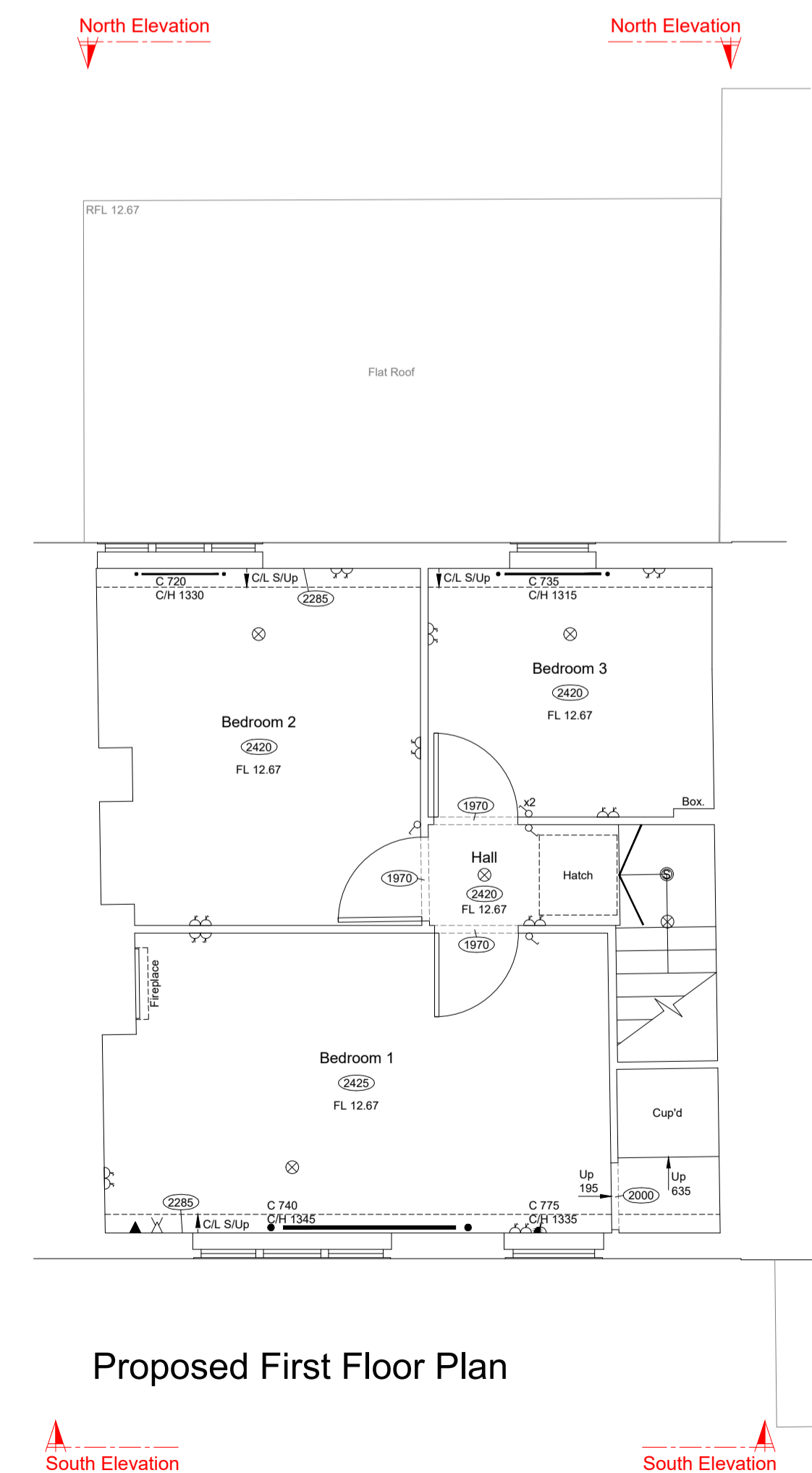
Datum: 8.00m



Proposed Ground Floor Plan

South Elevation

South Elevation



Proposed First Floor Plan

South Elevation

South Elevation

BUILDING SURVEY - LEGEND			
WINDOW DETAIL HEIGHTS	C	SUSPENDED CEILING	SC
FLOOR TO CELL HEIGHT	CH	FALSE CEILING	FC
CILL TO HEAD OF WINDOW	CH	CEILING	CA
CILL TO SPRING	CS	SPRINT	SP
AREADETAIL HEIGHTS		UNDERSIDE	US
FLOOR TO SPRING	S	FLOOR TO FLOOR HEIGHT	FL-FL
FLOOR TO HEAD	H	FLOOR LEVEL	FL
		THRESHOLD LEVEL	THL
DRAINAGE	IC	BEAM LEVEL	BL
INSPECTION COVER	IC	SOFFIT LEVEL	SFL
COVER LEVEL	CL	BASED LEVEL	BL
INVERT LEVEL	I	RIDGE LEVEL	RL
GALL	G	FINISHED FLOOR LEVEL	FFL
RAIN WATER PIPE	RWP	SLOPE	SL
SOL VENT PIPE	SVP	UP ARROW	UP
VENT PIPE	VP	FLOOR TO CEILING HEIGHT	FCH

SERVICES - LEGEND			
⊗	LIGHT FITTING	▲	TELEPHONE POINT
⊙	PENDANT LIGHT FITTING	⊗	TV POINT
⊕	LANDLORDS SUPPLY	⊕	SINGLE SWITCHED SOCKET OUTLET
⊖	EMERGENCY LIGHTING	⊖	DOUBLE SWITCHED SOCKET OUTLET
⊗	STRIP LIGHT	⊗	WORKTOP HEIGHT SOCKET OUTLET
⊕	SPRIT LIGHT	⊕	COOKER SWITCH
⊖	WALL LIGHT	⊖	DATA SOCKET
⊗	SHOWER UNIT	⊗	FUSED SOCKET
⊕	DOOR BELL	⊕	FIRE ALARM BELL
⊖	GAS METER	⊖	BREAK GLASS CALL POINT
⊗	ELECTRICITY METER	⊗	EXTRACTOR FAN
⊕	CONSUMER UNIT	⊕	THERMOSTAT
⊖	SECURITY ALARM SENSOR	⊖	RADIATOR
⊗	HOT WATER TANK	⊗	HEAT DETECTOR
⊕	BOILER	⊕	SMOKE DETECTOR
		⊖	LIGHT SWITCH
		⊗	MULTIPLE GANG LIGHT SWITCH
		⊕	MULTIPLE GANG DIMMER SWITCH
		⊖	FULL CORD LIGHT SWITCH

Notes:
All Levels are related to TBM Value: 10.00m
Sited on Floor level of entrance hall as shown on Ground Floor Plan.

North Point is indicative only.

M&E has been visually observed and indicated where possible, positions are approximate only.

All dimensions to be verified on site prior to construction. No dimensions to be scaled from this drawing.



Rev.	Date
A - Amended annotation	09/12/24

Do not scale from this drawing. Dimensions to be verified on site by contractor prior to commencement of work.
This drawing is the copyright of the practice and may not be reproduced in part or in whole without the prior written consent of the practice.
© 2021 Faithorn Farrell Timms LLP

Faithorn Farrell Timms
10 Hunns Mere Way
Woodingdean Business Park
Brighton
BN2 6AH
T 01273 305027

Client: RHP

Project: 16 Barnes Avenue London

Drawing Title: Proposed Floor Plans & Elevations

Date: Nov 2024 Scale: 1:50 @ A1

Drawn By: CP Checked By: IR

Project No.: PR-10267 Drawing No.: 104 Rev.: A

