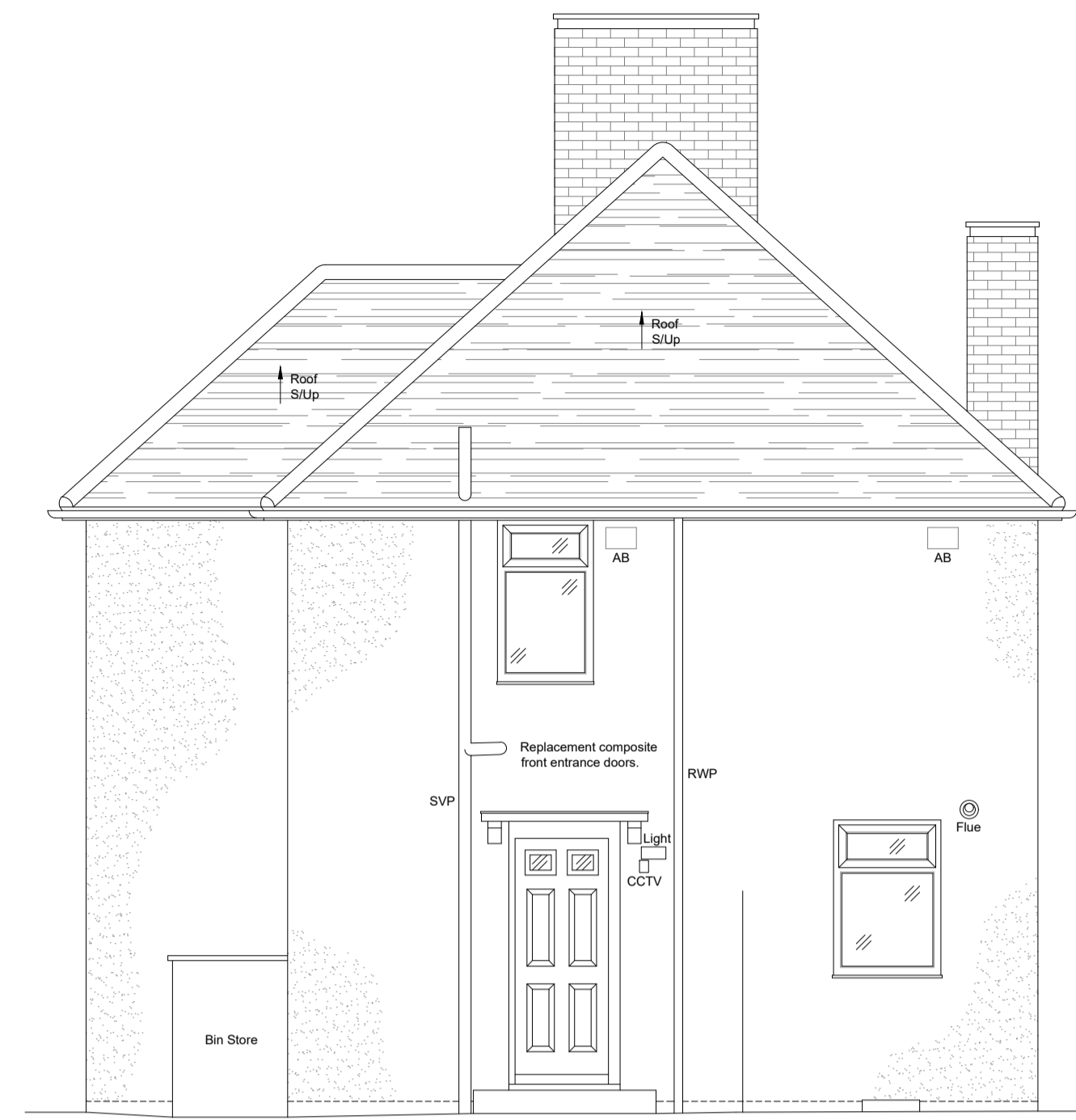




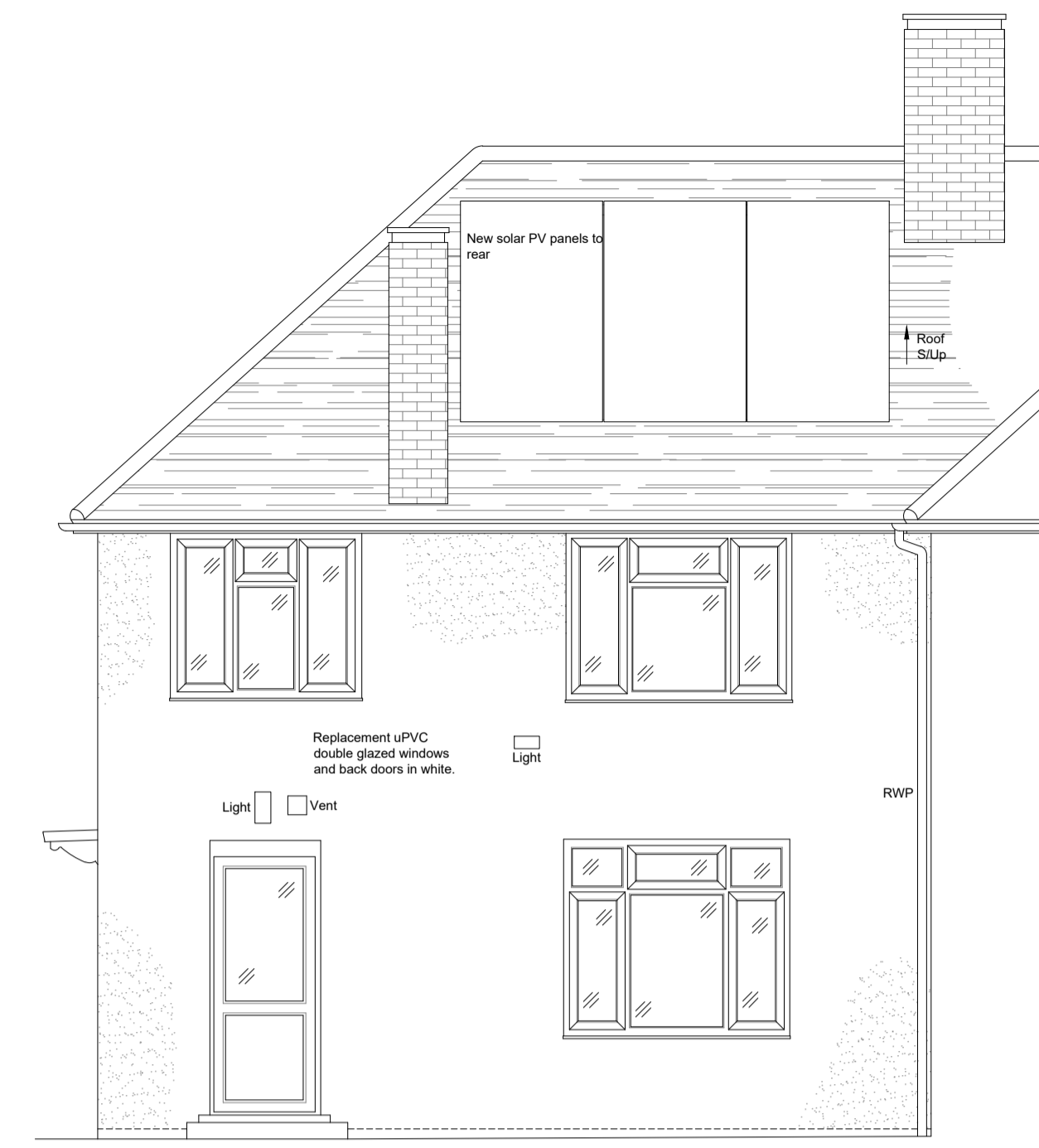
Proposed North Elevation

Datum: 8.00m



Proposed West Elevation

Datum: 8.00m



Proposed South Elevation

Datum: 8.00m

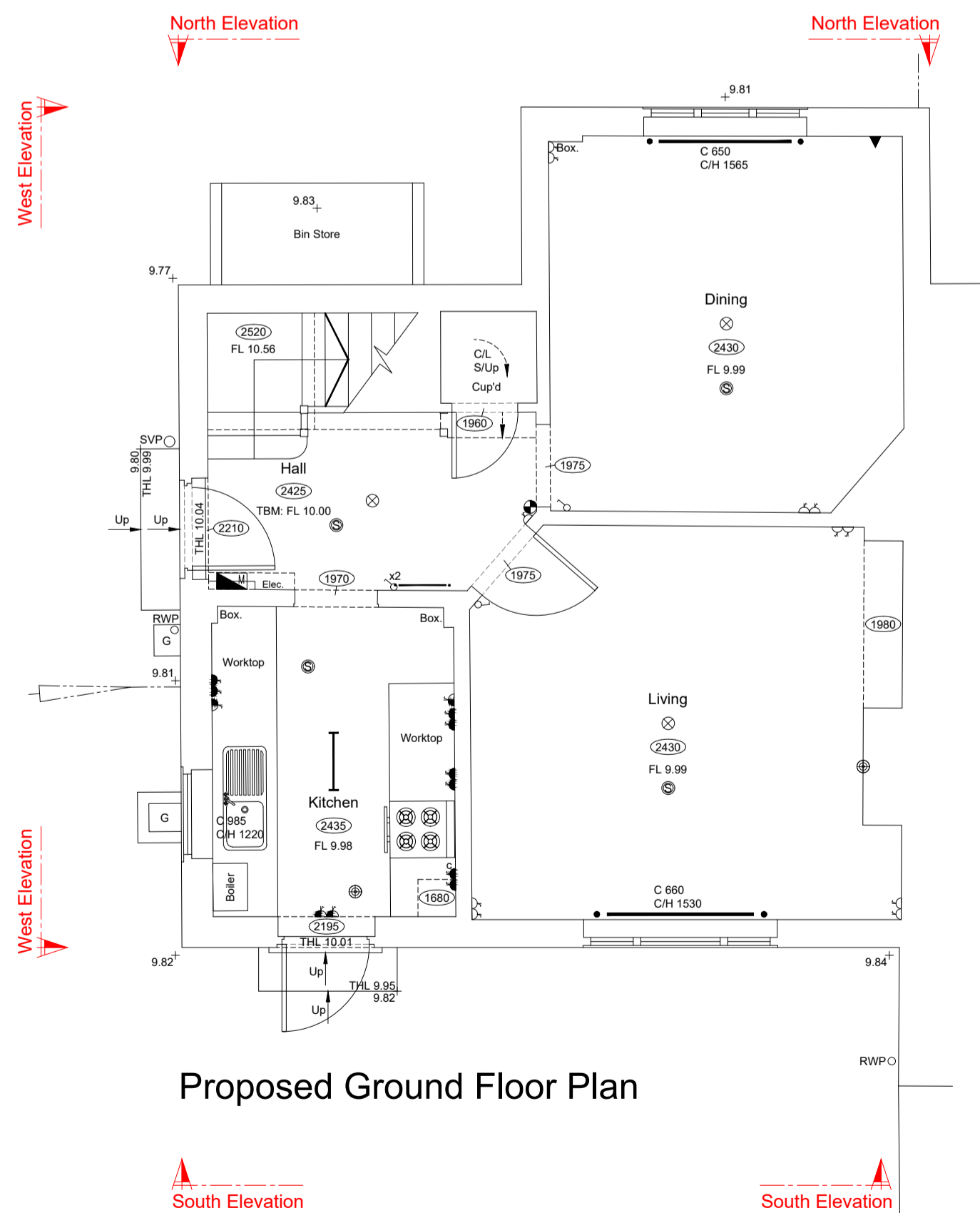
BUILDING SURVEY - LEGEND		
WINDOW DETAIL HEIGHTS:		
FLOOR TO CILL HEIGHT	C	SUSPENDED CEILING
CILL TO HEAD OF WINDOW	CH	FALSE CEILING
CILL TO FINISH	CH	CEILING
ABSOLUTE HEIGHTS:		
FLOOR TO SPRING	S	FLOOR TO FLOOR HEIGHT
FLOOR TO HEAD	H	FLOOR LEVEL
DRAINAGE:		
INJECTION COVER	IC	THRESHOLD LEVEL
COVER LEVEL	CL	BEAM LEVEL
INVERT LEVEL	I	SOFFIT LEVEL
RAIN WATER PIPE	RWP	BASE LEVEL
SOIL VENT PIPE	SVP	FINISH LEVEL
VENT PIPE	VP	ROOF LEVEL
		SLOPE UP
		SLOPE DOWN
		FLOOR TO CEILING HEIGHT

SERVICES - LEGEND			
⊗	LIGHT FITTING	▲	TELEPHONE POINT
⊙	PENDANT LIGHT FITTING	⊕	TV POINT
⊕	LANDLORDS SUPPLY	⊖	SINGLE SWITCHED SOCKET OUTLET
⊖	EMERGENCY LIGHTING	⊕	DOUBLE SWITCHED SOCKET OUTLET
⊕	STRIP LIGHT	⊕	WORKTOP HEIGHT SOCKET OUTLET
⊕	SPOT LIGHT	⊕	COOKER SWITCH
⊕	WALL LIGHT	⊕	DATA SOCKET
⊕	SHOWER UNIT	⊕	FUSED SOCKET
⊕	DOOR BELL	⊕	FIRE ALARM BELL
⊕	GAS METER	⊕	BREAK GLASS CALL POINT
⊕	ELECTRICITY METER	⊕	EXTRACTOR FAN
⊕	CONSUMER UNIT	⊕	THERMOSTAT
⊕	SECURITY ALARM SENSOR	⊕	RADIATOR
⊕	HOT WATER TANK	⊕	HEAT DETECTOR
⊕	BOILER	⊕	SMOKE DETECTOR
		⊕	LIGHT SWITCH
		⊕	MULTIPLE GANG LIGHT SWITCH
		⊕	MULTIPLE GANG DIMMER SWITCH
		⊕	FULL CORE LIGHT SWITCH

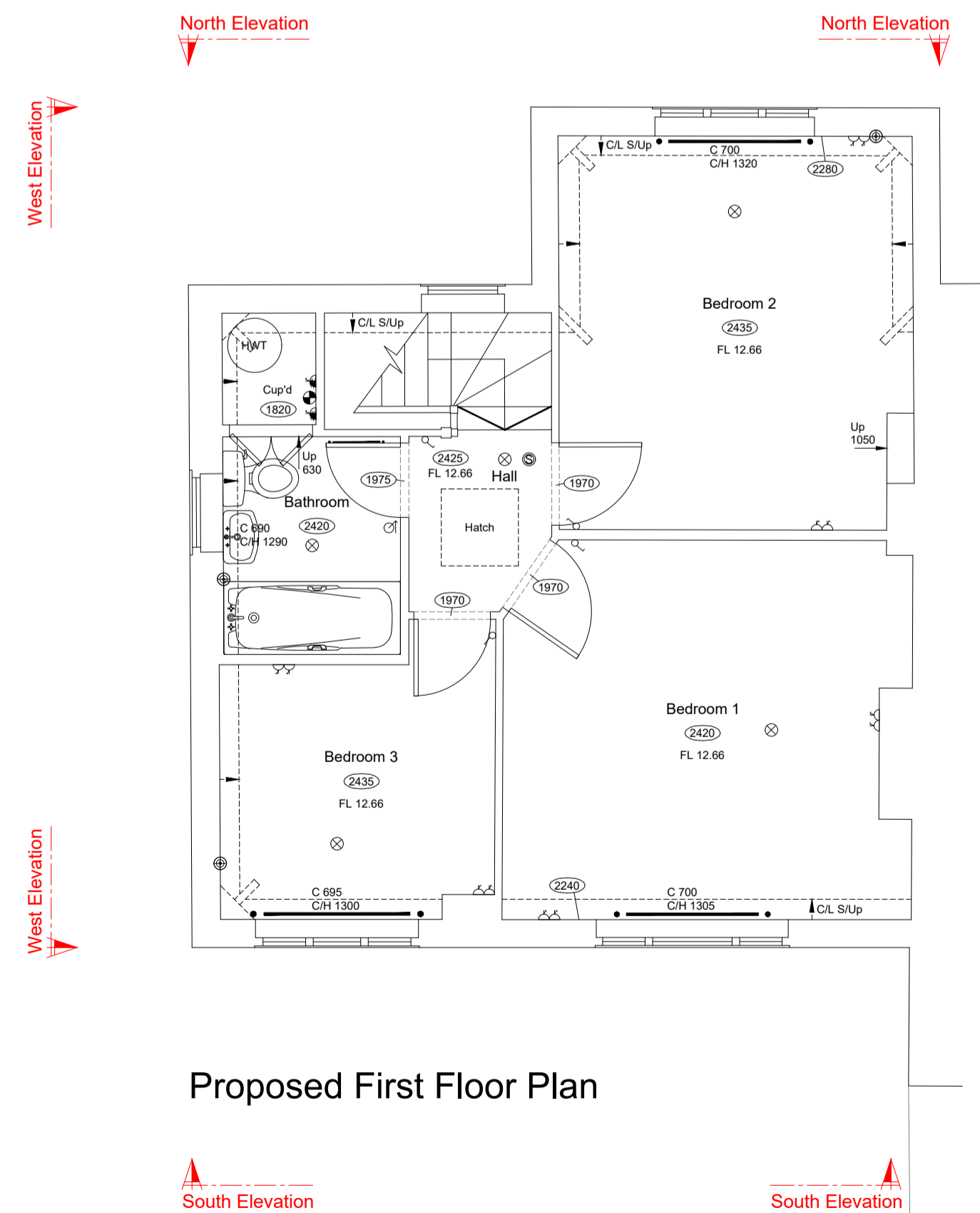
Notes:
 All Levels are related to TBM Value: 10.00m
 Situated on Floor level of entrance hall as shown on Ground Floor Plan.

North Point is indicative only.
 M&E has been visually observed and indicated where possible, positions are approximate only.

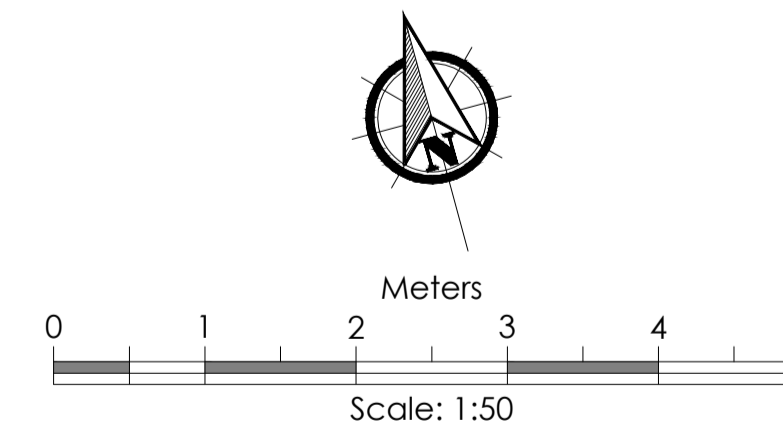
All dimensions to be verified on site prior to construction.
 No dimensions to be scaled from this drawing.



Proposed Ground Floor Plan



Proposed First Floor Plan



Rev.	Date
A - Added Proposed Annotation	09/12/24

Do not scale from this drawing. Dimensions to be verified on site by contractor prior to commencement of work.
 This drawing is the copyright of the practice and may not be reproduced in part or in whole without the prior written consent of the practice.
 © 2021 Faithorn Farrell Timms LLP



Faithorn Farrell Timms
 10 Hunns Mere Way
 Woodingdean Business Park
 Brighton
 BN2 6AH
 T 01273 305027

Client: RHP

Project: 11 Barnes Avenue London

Drawing Title: Proposed Floor Plans & Elevations

Date: Nov 2024
 Scale: 1:50 @ A1

Drawn By: KH
 Checked By: IR

Project No.: PR-10267
 Drawing No.: 102
 Rev.: A