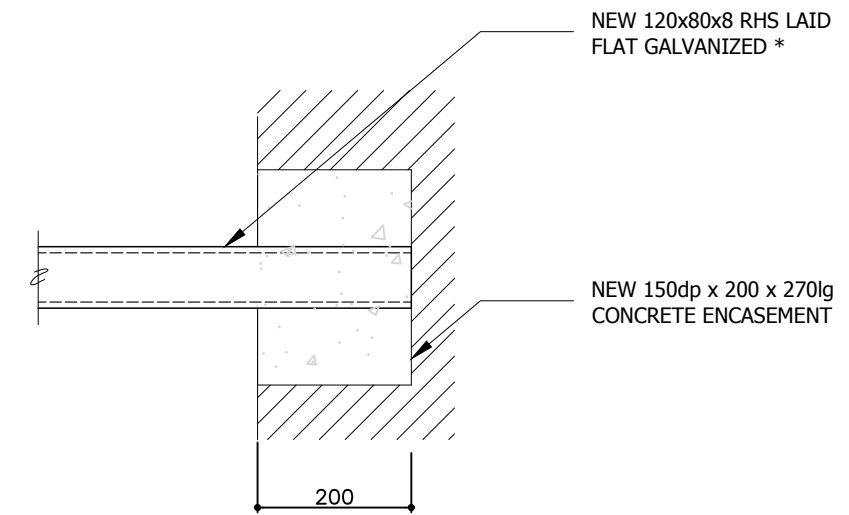


1-1



BEAM END BEARING/EMBEDMENT

- NOTES:
1. THIS DRAWING MUST BE READ IN CONJUNCTION WITH ALL ARCHITECTS, SERVICE ENGINEERS AND SPECIALIST CONTRACTOR DRAWINGS, DETAILS AND SPECIFICATIONS. ANY DISCREPANCIES MUST BE BROUGHT TO THE ATTENTION OF THE CONTRACT ADMINISTRATOR PRIOR TO COMMENCEMENT OF THE WORKS.
 2. DO NOT SCALE FROM PAPER OR DIGITAL VERSIONS OF THIS DRAWING. USE STATED DIMENSIONS ONLY.
 3. ALL LEVELS, DIMENSIONS AND SETTING-OUT MUST BE CONFIRMED BY THE ARCHITECT PRIOR TO CONSTRUCTION.

REV	DATE	DESCRIPTION	BY
P1	11.12.24	PRELIMINARY ISSUE	JL

PROJECT TITLE:
 5 OLD PALACE TERRACE
 LONDON
 TW9 1NB

SCALE: 1:10 @A3 DATE: DEC 2024

DRAWING STATUS:
PRELIMINARY

DRAWING TITLE:
 PROPOSED
 DETAILS

DRAWN BY: JL

JOB NUMBER - DRAWING NUMBER: REVISION:
 1224508 - 020 P1

Lengineering Ltd
 CONSULTING STRUCTURAL ENGINEERS

10 UNWIN AVENUE
 LONDON
 TW14 9RG

07730533857
 02087071544

office@lengineering.co.uk
 www.lengineering.co.uk