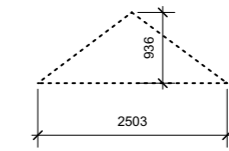
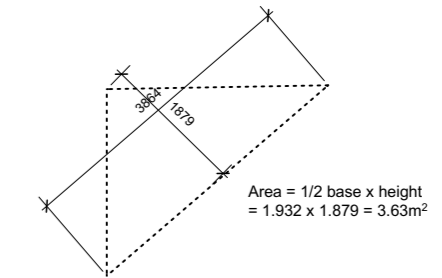


Volume of Hip to Gable = $\frac{1}{3}$ base area x height
= $3.233\text{m}^2 \times 2.957\text{m} = 9.559\text{m}^3$

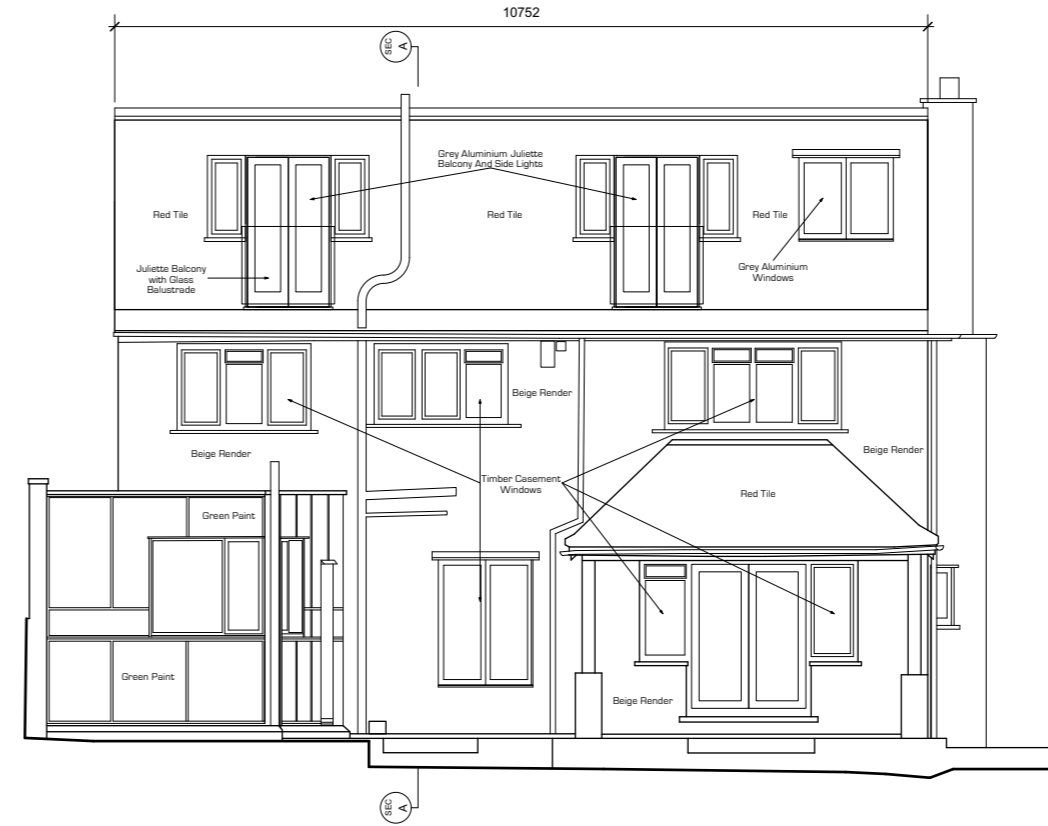
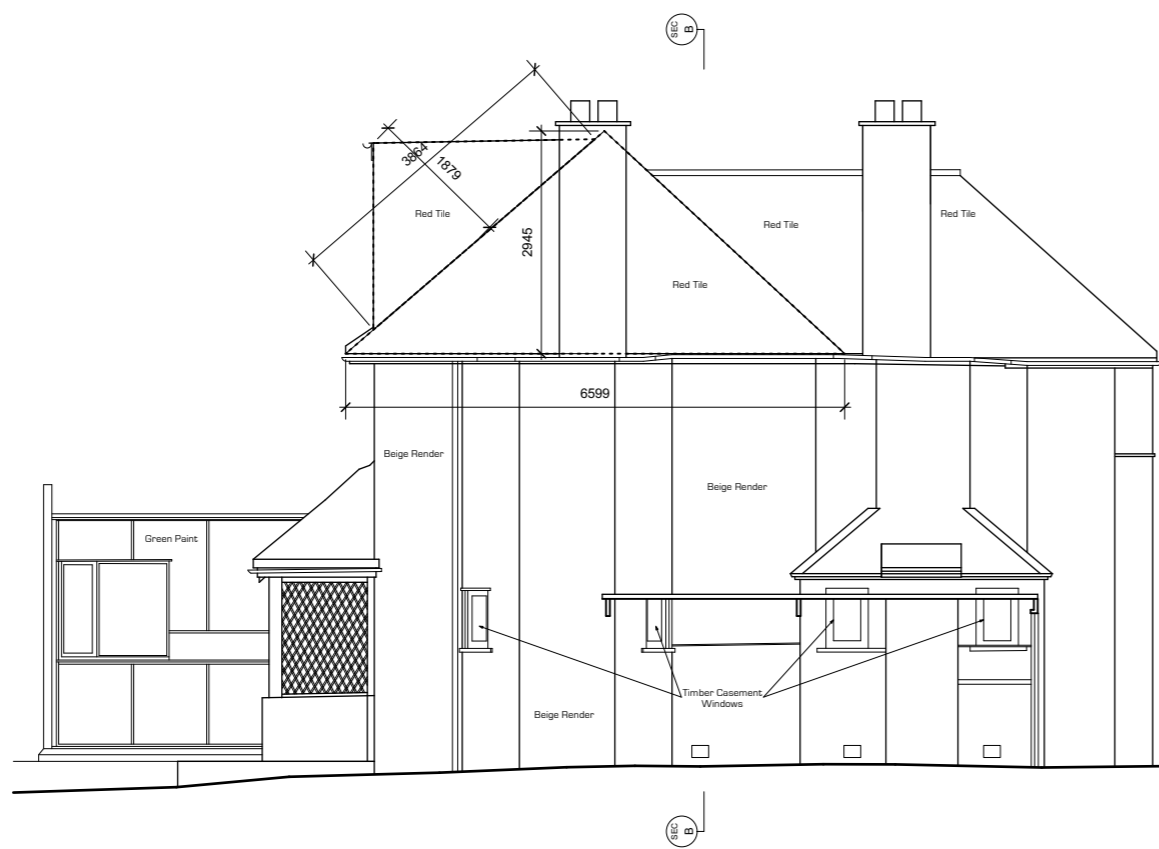
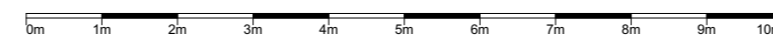
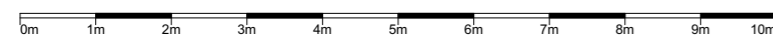
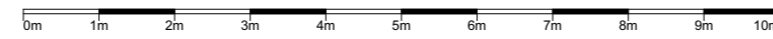
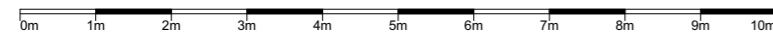


Volume of Hip to Gable = $\frac{1}{3}$ base area x height
= $0.39\text{m}^2 \times 1.046\text{m} = 0.408\text{m}^3$



Volume of Dormer = Dormer area x Length
= $3.63\text{m}^2 \times 10.752\text{m} = 39.029\text{m}^3$

Total Volume = 9.559m³ + 0.408m³ + 39.029m³ = 48.996m³ < 50m³



- Do not scale from this drawing.
- This drawing is the copyright of Paul Dean Architect Limited and shall not be reproduced by third parties without the consent of Paul Dean Architect Limited.
- The contractor shall report all dimensional discrepancies to Architect prior to putting the work in hand.
- This drawing is only issued for the purpose indicated.



Paul Dean Architect Limited

Mortlake Business Centre,
20 Mortlake High Street,
London,
SW14 8JN.
Email: paul@pauldeanarchitect.com
Phone: 07940 494 686

Project Name 51 Hertford Avenue		Project No. 51HA_L
Drawing Title - Roof Extension Volume Calculation_L		Drawing No. 1316
Date 06/12/24	Drawn By PD	Scale @ A2 1:100
Revision Description		Revision Date:
-		Revision By -
Planning		