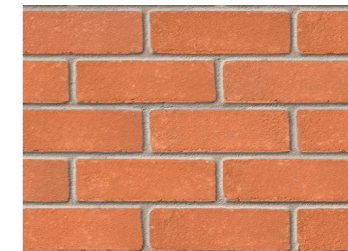


# EXTERNAL MATERIALS SCHEDULE

New Build Dwelling - 2A Courtland Avenue, Hampton TW12 3NT  
 22/1513/FUL - Condition U0138314 (External surface materials)  
 Revision D



No. 2 Courtlands Ave  
 Red brick with light grey mortar



**1. Facing Brickwork**  
 Ibstock Mellow Regent Stock  
 Light grey mortar. Flush pointing with rag finish



**2. Lintels to windows/doors**  
 Brickwork as 1.



**3. Clay plain tiles**  
 BMI Redland - Antique Red



**4. Render wall finish**  
 White



**5. Window sills**  
 White painted stone



**6. Windows / doors**  
 Timber with white finish.  
 Seals and spacer bars in white



**7. Entrance Door**  
 Painted timber



**8. Bi-fold doors**  
 Aluminium with white finish



**9. Roof windows**  
 Velux - dark grey frames



**10. Soffits and Fascia Boards**  
 White painted timber



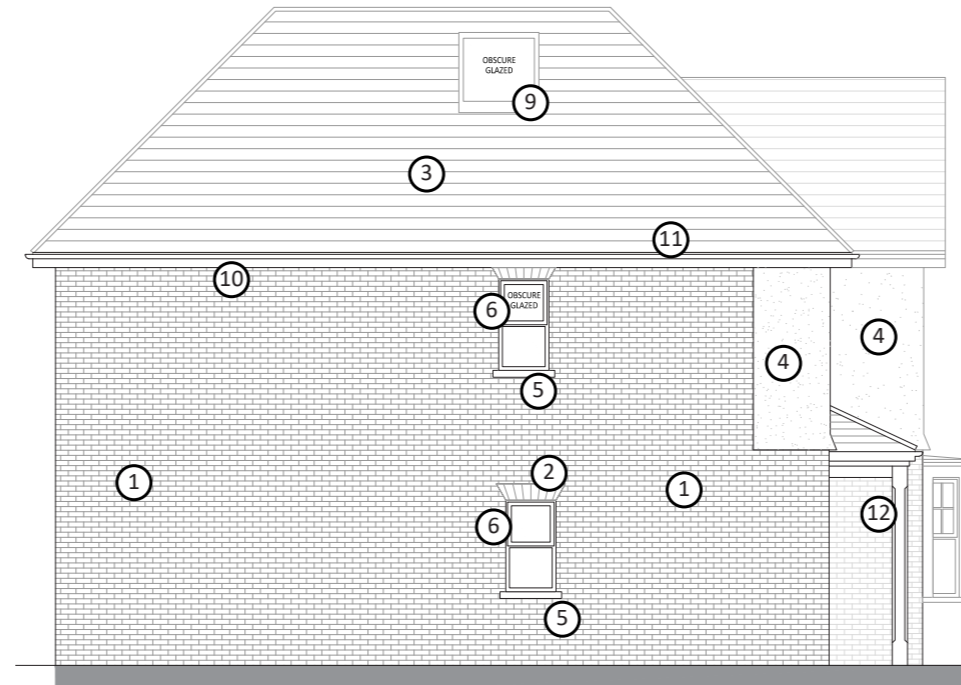
**11. Guttering/downpipes**  
 Black plastic



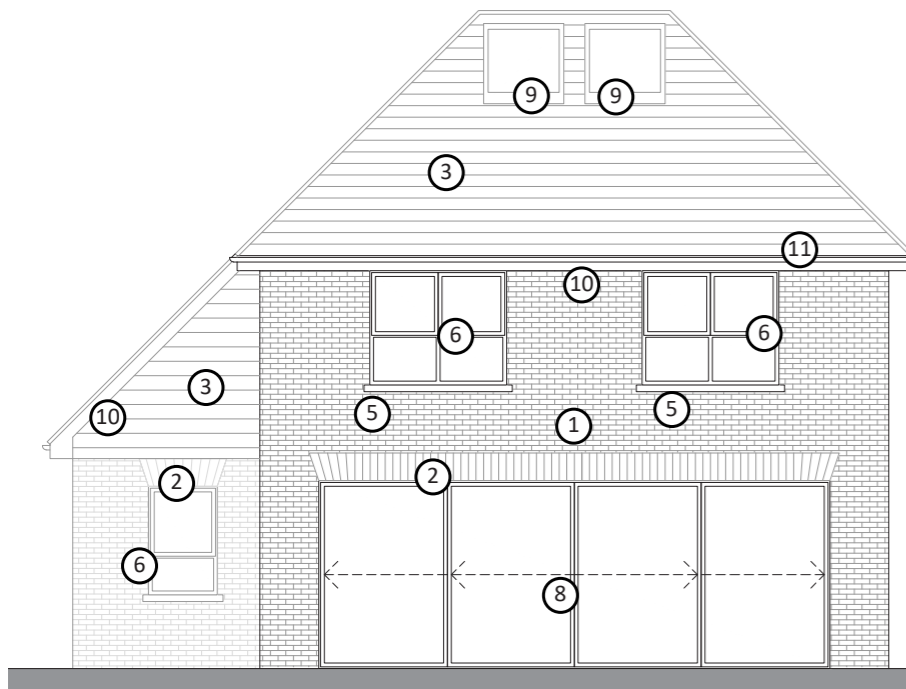
**12. Porch structure**  
 Solid oak



Front Elevation



Side Elevation



Rear Elevation



Side Elevation