

STATUS
PLANNING

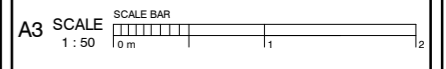
- NOTES:
1. DO NOT SCALE FROM THIS DRAWING
 2. ALL DIMENSIONS TO BE CHECKED ON SITE PRIOR TO FABRICATION
 3. THIS DRAWING SHOULD BE READ IN CONJUNCTION WITH STRUCTURAL ENGINEERS DRAWINGS
 4. THIS DRAWING SHOULD BE READ IN CONJUNCTION WITH SERVICE ENGINEERS DRAWINGS
 5. COPYRIGHT OF THIS DRAWING REMAINS WITH JOHN RICH ARCHITECTS
 6. ANY DISCREPANCY FOUND BETWEEN THIS DRAWING AND ANY OTHER DOCUMENTS MUST BE REPORTED IMMEDIATELY BY THE CONTRACTOR
 7. ALL PROPRIETARY MATERIALS TO BE INSTALLED IN ACCORDANCE WITH MANUFACTURERS INSTRUCTIONS
 8. ALL TIMBERS TO BE PRESSURE IMPREGNATED

REVISIONS

No.	Description	Date

PROJECT
1 Old Palace Terrace, Richmond, TW9 1NB

CLIENT
Mr A Batten & Ms G Wood



PROJECT DESCRIPTION
External and Internal Remodelling to a Listed Building

DRAWING NAME
Existing Section A-A

John Rich Architects 6a Royal Parade Kew Richmond Surrey TW9 3QD t: 020 8940 0416 f: 020 8940 3303 e: mail@johnricharchitects.com w: www.johnricharchitects.com <small>© Copyright John Rich Architects Ltd</small>	DATE: AUG 23
	DRAWN: CS
	CHECKED: JR
	JOB NO: 21.5980
DRAWN: REV	A020