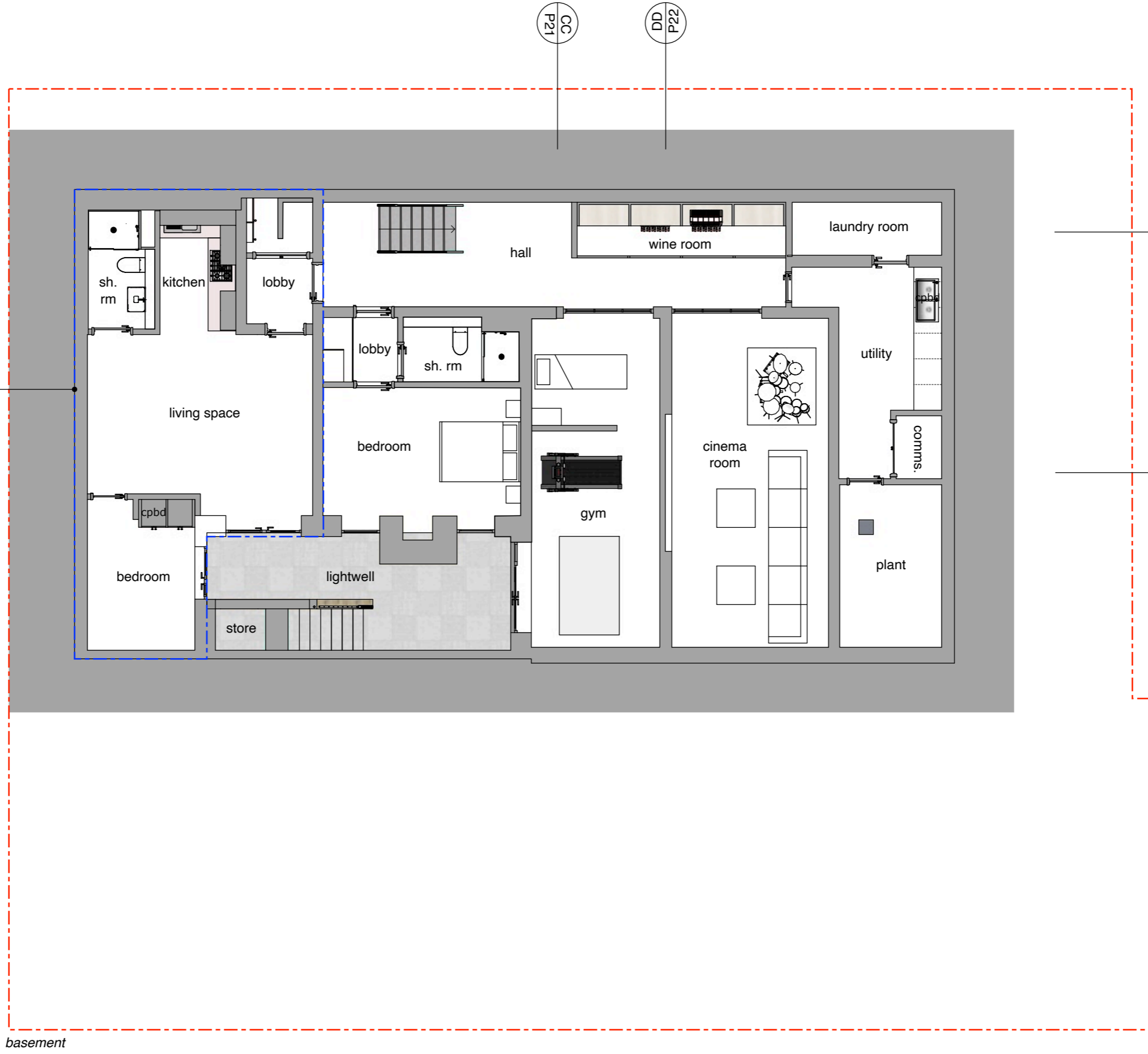


Any dimensions shown should be checked on site and discrepancies reported to the Architect prior to construction. Designs are not coordinated with engineer projects. Scale at risk.

17A Beverley Gardens designated by blue dashed line (no changes)



Malone + Pike
Architects
info@malonepike.com
02037 405 730
© M+P Architects 2024

CLIENT
Emma Lee
17 Beverley Gardens
London
SW13 0LZ

ISSUE
23.12.24
RE-ISSUE
Planning Issue
Rev A

PROJECT NO.
840
PROJECT
17 Beverley
Gardens

DRAWN BY
CAP
DESCRIPTION
Proposed Plans
Basement