

Project:

0663_Priests Bridge

26-28 Priests Bridge East Sheen
London
SW14 8TA

Date:

23/12/2024

Report:

**Planning Condition U0191185
Construction Materials**

Revision:

P0

WIMSHURST
PELLERITI

The Mews,
6 Putney Common, SW15 1HL

0208 780 2206
info@wp.uk.com
wimshurst-pelleriti.com



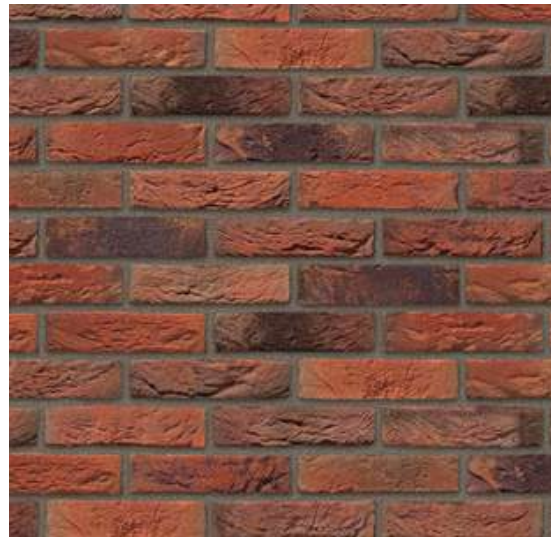
MATERIALS TO BE USED IN EXTERNAL ELEVATIONS

Planning Condition U0191185:

The external surfaces of the buildings (including fenestration, privacy screens, masonry and brickwork, bonding pattern) shall not be constructed other than in materials details/samples of which shall be submitted to and approved in writing by the Local Planning Authority.

REASON: To ensure that the proposed development does not prejudice the appearance of the locality

Proposed Materials for External Elevations:



1. Facing brickwork

Vandersanden Bromley Red Multi
- with grey mortar joint

Locations:

- Front building upper floor levels



2. Cementitious Render

Fine Silicone Render (Light Grey)

Locations:

- Front and rear building ground floor walls to commercial spaces and link



3. Steel Framework

PFC Steel - Polyester Powder Coated RAL 7004 (Signal Grey)

Locations:

- Front building street facing south west facade

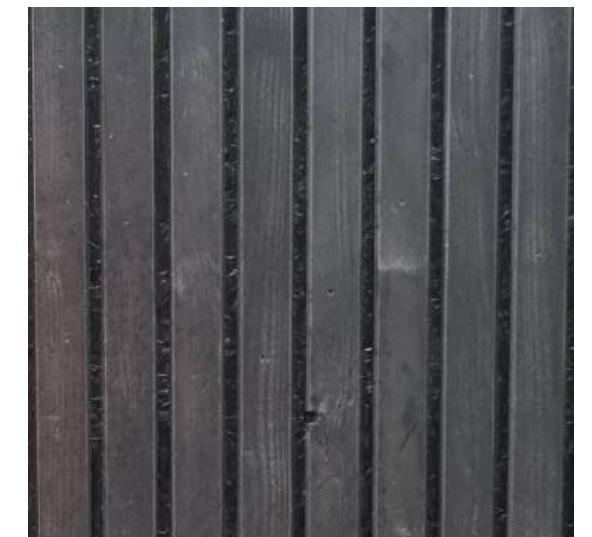


4. External Metal Fenestration

Polyester powder coated or spray painted Metal in RAL 7021 (Black Grey).

Locations:

- Front and Rear buildings
- All steel balustrades to balconies
- PPC aluminium door & window frames
- PPC aluminium window surrounds.



5. Timber Cladding

Treated timber batten fixed vertically, painted matte black

Locations:

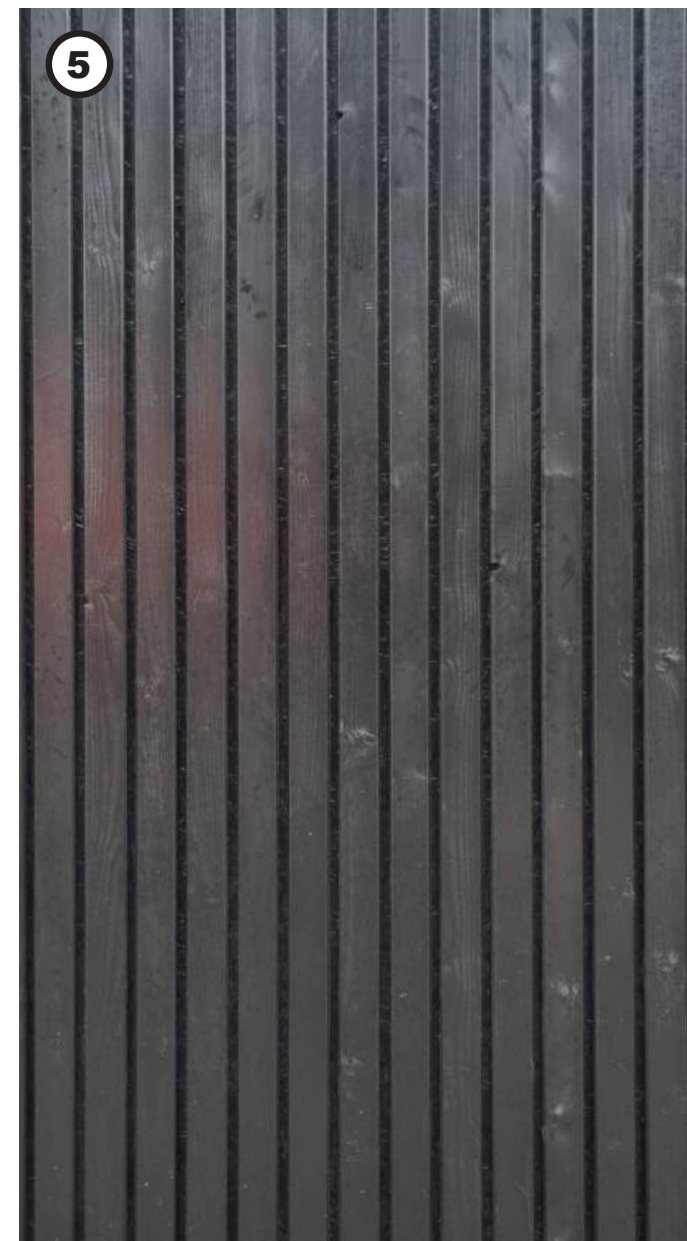
- All steel balustrades to balconies
- PPC aluminium door & window frames
- PPC aluminium projecting window surrounds.

Please Note: A physical sample panel of these materials can be inspected on site upon request.

MATERIALS TO BE USED IN EXTERNAL ELEVATION



Sample Board



Timber cladding sample panel

1. Facing brickwork

Vandersanden Bromley Red Multi
- with grey mortar joint

2. Cementitious Render

Fine Silicone Render (Light Grey)
- Colour ref Ceresit Japan Grey

3. Steel PFC Framework

PFC Steel - Polyester Powder Coated RAL
7004 (Signal Grey)

4. External Metal Fenestration

Polyester powder coated or spray painted
Metal in RAL 7021 (Black Grey).

5. Timber Cladding

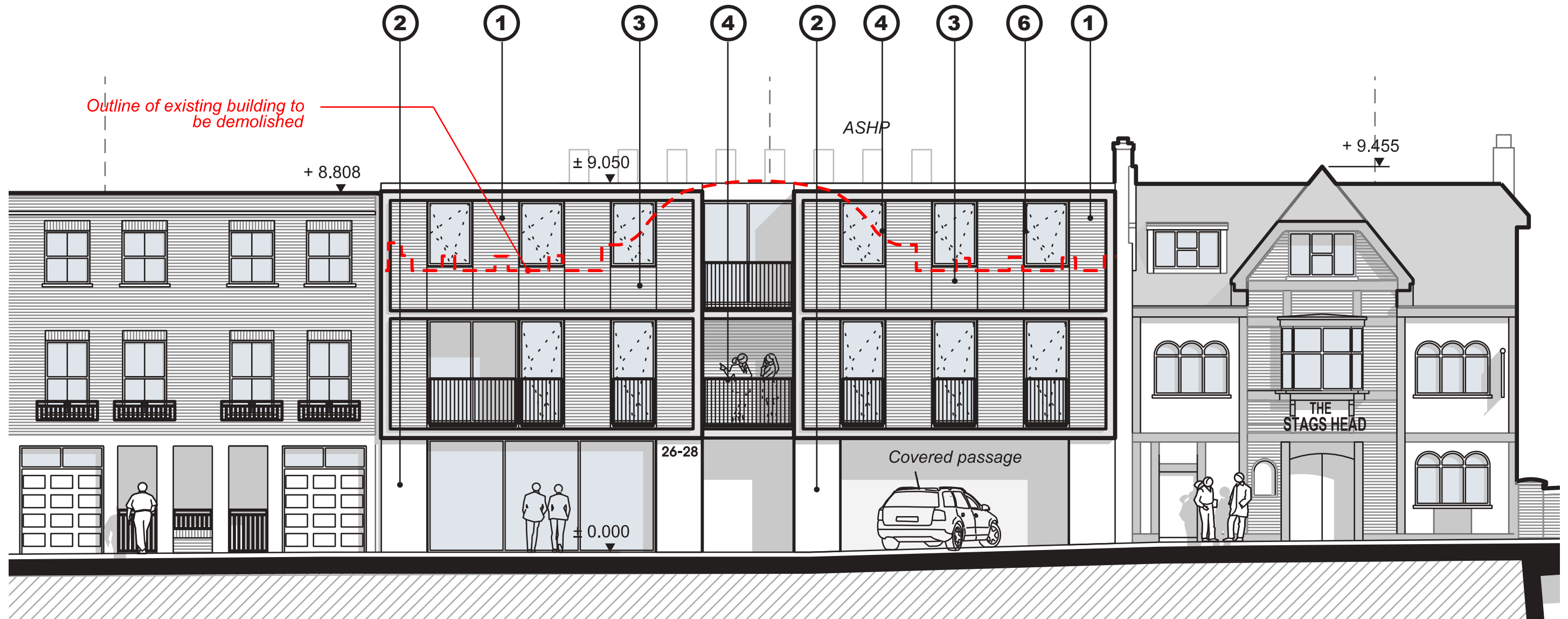
Treated timber batten laid vertically painted
matte black

6. Windows

Polyester powder coated aluminium clad
timber framed windows with clear glazing.
Triple glazing to residential and double
glazing to commercial. PPC paint RAL 7021
(Black Grey).

MATERIALS TO BE USED IN EXTERNAL ELEVATION

MATERIALITY - FRONT BUILDING



- | | |
|--|--|
| <ul style="list-style-type: none"> 1. Facing brickwork 2. Cementitious Render 3. Steel Framework 4. Metal/ Fenestration finishes 5. Timber Cladding 6. Windows | <p><i>Vandersanden Bromley Red Multi - with grey mortar joint</i></p> <p><i>Fine Silicone Render (Light Grey)</i></p> <p><i>PFC Steel - Polyester Powder Coated RAL 7004 (Signal Grey)</i></p> <p><i>Polyester powder coated or spray painted Metal in RAL 7021 (Black Grey).</i></p> <p><i>Treated timber batten fixed vertically, painted matte black</i></p> <p><i>Polyester powder coated aluminium clad timber framed windows with clear glazing. RAL 7021 (Black grey)</i></p> |
|--|--|

Proposed South West Elevation facing Preists Bridge Road (as approved)

MATERIALS TO BE USED EXTERNAL ELEVATIONS

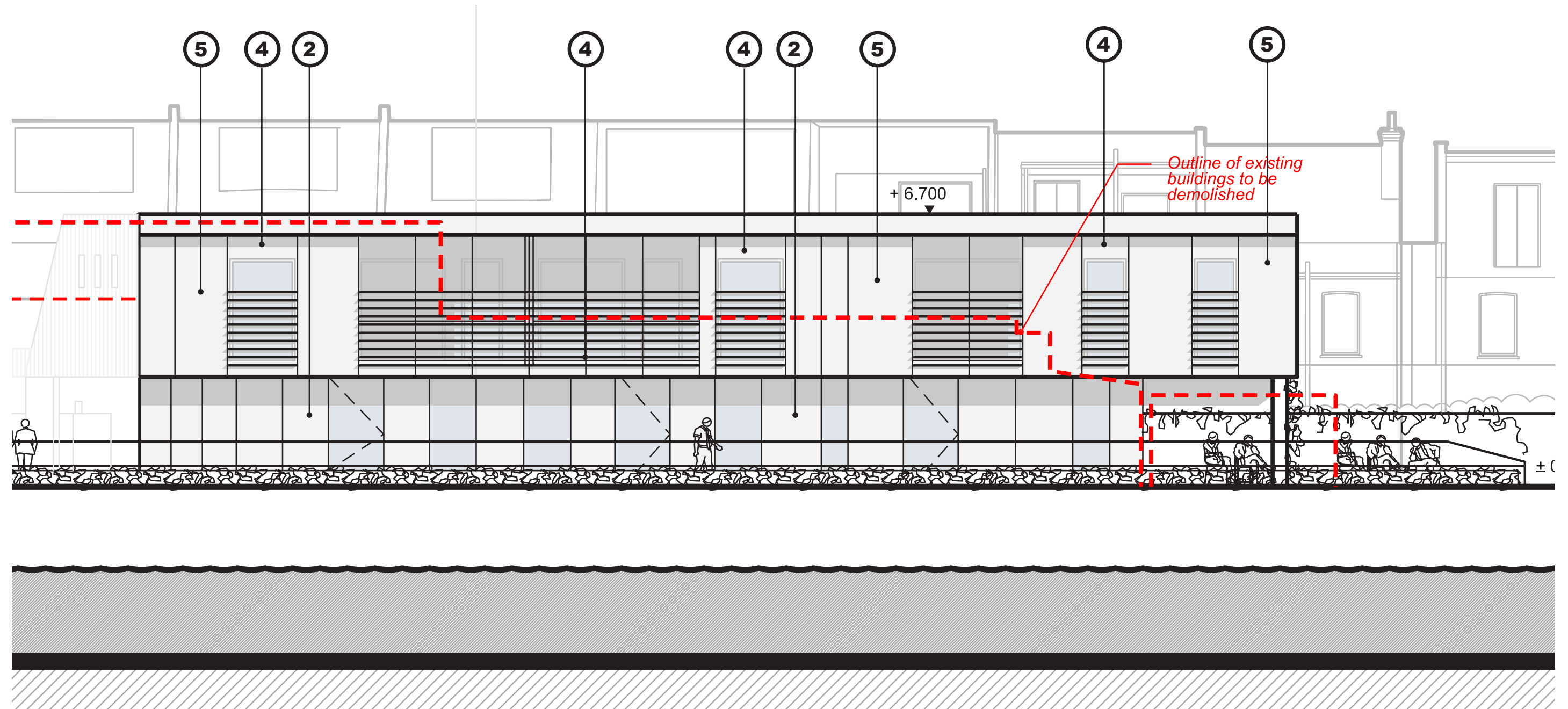
MATERIALITY - FRONT BUILDING



Detail Bay of Proposed South West Elevation facing Preists Bridge Road

MATERIALS TO BE USED IN EXTERNAL ELEVATION

MATERIALITY - REAR BUILDING



- | | |
|--|---|
| <ul style="list-style-type: none"> 1. Facing brickwork 2. Cementitious Render 3. Steel Framework 4. Metal/ Fenestration finishes 5. Timber Cladding 6. Windows | <ul style="list-style-type: none"> <i>Vandersanden Bromley Red Multi - with grey mortar joint</i> <i>Fine Silicone Render (Light Grey)</i> <i>PFC Steel - Polyester Powder Coated RAL 7004 (Signal Grey)</i> <i>Polyester powder coated or spray painted Metal in RAL 7021 (Black Grey).</i> <i>Treated timber batten fixed vertically, painted matte black</i> <i>Polyester powder coated aluminium clad timber framed windows with clear glazing. RAL 7021 (Black grey)</i> |
|--|---|

Proposed South East Elevation facing Beverley Brook (as approved)

MATERIALS TO BE USED EXTERNAL ELEVATIONS

MATERIALITY - REAR BUILDING



Detail Elavation - Rear Building East
Scale 1:50 @ A3

Detail Bay of Proposed East Elevation facing Preists Bridge Road

The copyright in this report belongs to Wimshurst Pelleriti. The client has a non-exclusive licence to copy this material for the purpose only of publicising, financing or marketing the scheme but not for executing the scheme. Copying or use for any other purpose requires Wimshurst Pelleriti's written consent.

WIMSHURST
PELLERITI

The Mews,
6 Putney Common, SW15 1HL

0208 780 2206
info@wp.uk.com
wimshurst-pelleriti.com

