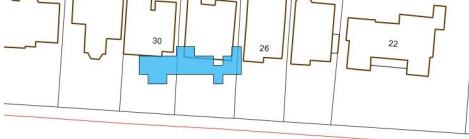


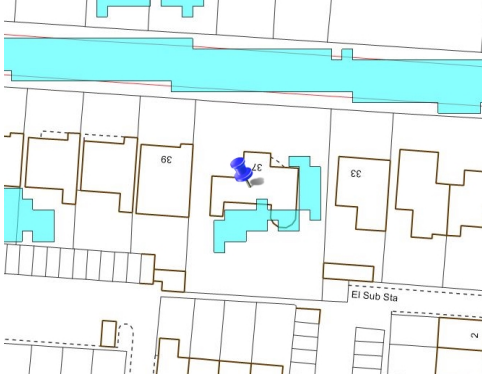
FLOOD STATEMENT FOR 37 Acacia Road

The site is 0.088 Ha and is in flood Zone 1 which has a low probability of flooding from rivers and the sea. There is no Risk of Flooding from Surface Water Extent 1 in 30 Chance.

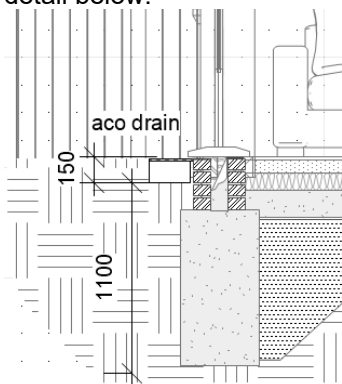
No risk of Flooding from Surface Water Extent 1 in 100 Chance (ie 1 in 100 year Surface Water Extent):



Risk of Flooding from Surface Water Extent 1 in 1000 Chance:



The internal ground levels will be no lower than the external levels. Door thresholds less than 150mm above external ground levels will have French/ACO drains discharging to the existing soakaway, min 5m from any buildings. E.g typical detail below:



External levels will be laid to fall away from house.

Gráinne O'Keeffe (Ms), Principal Architect, RIBA

GRÁINNE O'KEEFFE ARCHITECTS LIMITED

Atrium, 36 Broad Lane, Hampton, TW12 3AZ
020 8941 1061 – 07976 389970
grainnearch@btopenworld.com
www.gokarchitects.co.uk