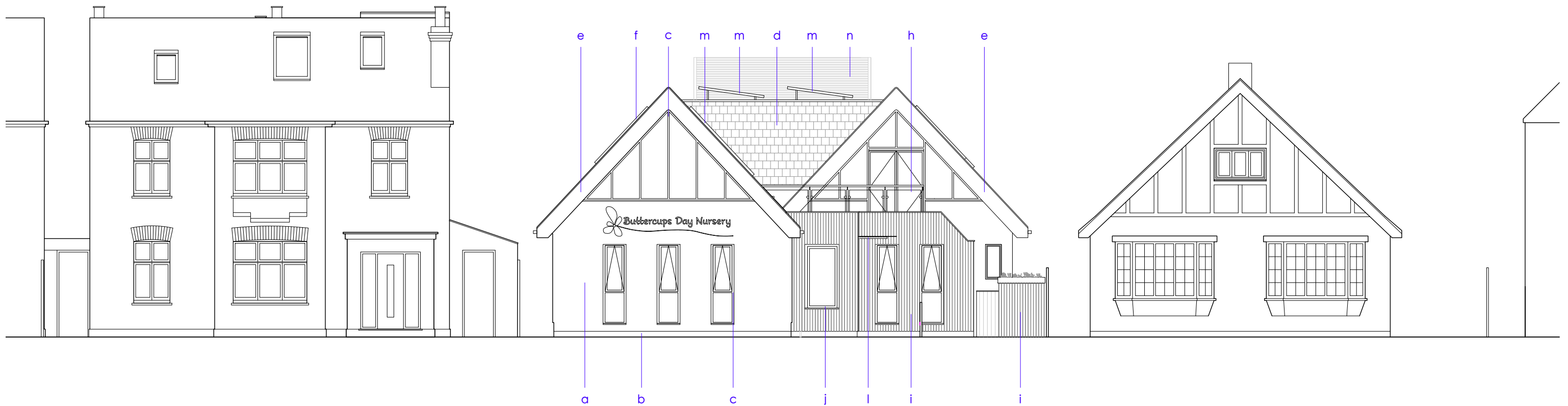


Materials Key

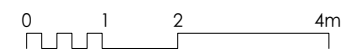
- a - Off white render walls
- b - Dark grey painted plinth
- c - Thin dark grey aluminium frames
- d - Dark slate roof (to match existing)
- e - Timber facade board
- f - Dark grey conservation rooflights
- g - Dark grey skylight upstands
- h - Glass balustrades
- i - Timber cladding
- j - Yellow aluminium frame
- k - Obscured glazing to first floor side windows
- l - Glass canopy
- m - PV panels
- n - Grey powdercoated aluminum louvre plant enclosure



78 North Road

77 North Road

76 North Road



C - Louvre Enclosure Added
 B - Various design adjustments
 A - Various design adjustments; materials updated
 revisions

XD - 05/12/2024
 XD - 20/05/2024
 KH - 04/07/2023

MICHAEL JONES ARCHITECTS
 020 8948 1863 | 129 Kew Road, Richmond, TW9 2PN
 www.mjarchitects.co.uk | studio@mjarchitects.co.uk

job title
77 North Road
 client
Buttercups Nursery

drawing title
Proposed Front (West) Elevation
 drawing number
1641.03.03.Pl03.061

scale	1:100 at A3
date	Dec 2022
rev	drawn by AMP
C	checked by AB