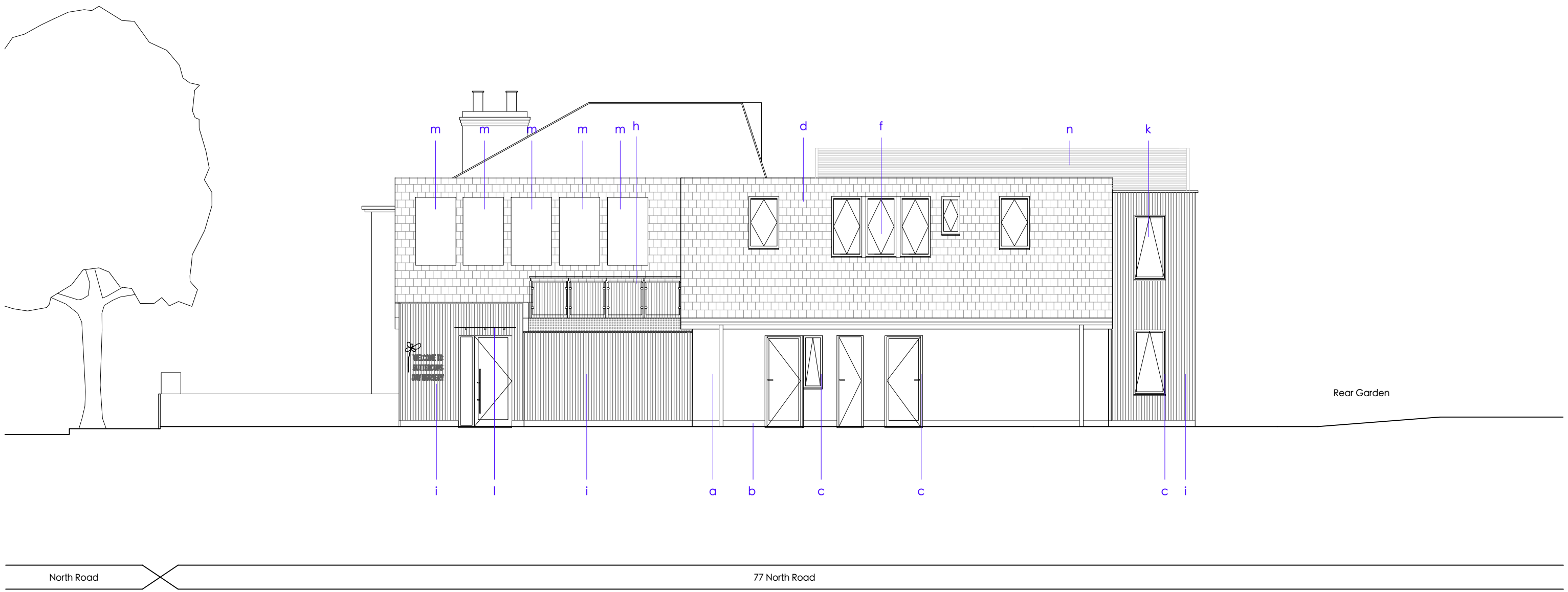


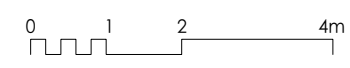
- Materials Key**
- a - Off white render walls
  - b - Dark grey painted plinth
  - c - Thin dark grey aluminium frames
  - d - Dark slate roof (to match existing)
  - e - Timber facade board
  - f - Dark grey conservation rooflights
  - g - Dark grey skylight upstands
  - h - Glass balustrades
  - i - Timber cladding
  - j - Yellow aluminium frame
  - k - Obscured glazing to first floor side windows
  - l - Glass canopy
  - m - PV panels
  - n - Grey powdercoated aluminum louvre plant enclosure



Rear Garden

North Road

77 North Road



C - Louvre Enclosure Added  
 B - Various design adjustments  
 A - Various design adjustments; materials updated  
 revisions

XD - 05/12/2024  
 XD - 20/05/2024  
 KH - 04/07/2023

**MICHAEL JONES ARCHITECTS**  
 020 8948 1863 | 129 Kew Road, Richmond, TW9 2PN  
 www.mjarchitects.co.uk | studio@mjarchitects.co.uk

job title  
**77 North Road**  
 client  
**Buttercups Nursery**

drawing title	scale	1:100 at A3
<b>Proposed Side (South) Elevation</b>	date	Dec 2022
drawing number	rev	drawn by
<b>1641.03.03.Pl03.062</b>	<b>C</b>	AMP
	checked by	AB