

Design Note

122 Castelnau, LONDON, SW13 9EU

In support of the Application to discharge conditions 'U0191885 Approved Plans' and 'U0193889 Approved Plans', to reflect the amended rooflight strategy, in approved applications '24/2161/VRC and '24/2672/VRC'.

In light of the approved alterations of the purlin position in the second-floor stairwell, we are seeking to vary the approved arrangement of the replacement conservation roof light here.

As part of our original approved applications '22/2522/HOT' and '22/2523/LBC', permission was granted to reposition the purlin lower down the roof and to reposition the rooflight down to the purlin, to improve headroom above the existing staircase.

The objective of this Section 73 application is to amend the proposal to preserve the position of the existing top and sides of the rooflight opening and only enlarge the opening downwards to the top side of the repositioned purlin. This adjustment results in a taller rooflight, which will further improve the headroom above the stair. The benefit of the above proposal is that we will achieve a larger window which is desirable, without losing any more historic fabric than what we already have approval for in applications '22/2522/HOT' and '22/2523/LBC'.

Importantly, the proposed arrangement would retain the current position of the rooflight trimmers and top and side flashings, thereby further minimising any disruption to the existing historic fabric and structural arrangement.

Furthermore, due to the slope and height of the main house roof, the visual difference of the proposed alterations from the main road would be negligible, as illustrated in the diagram below (Fig. 1).

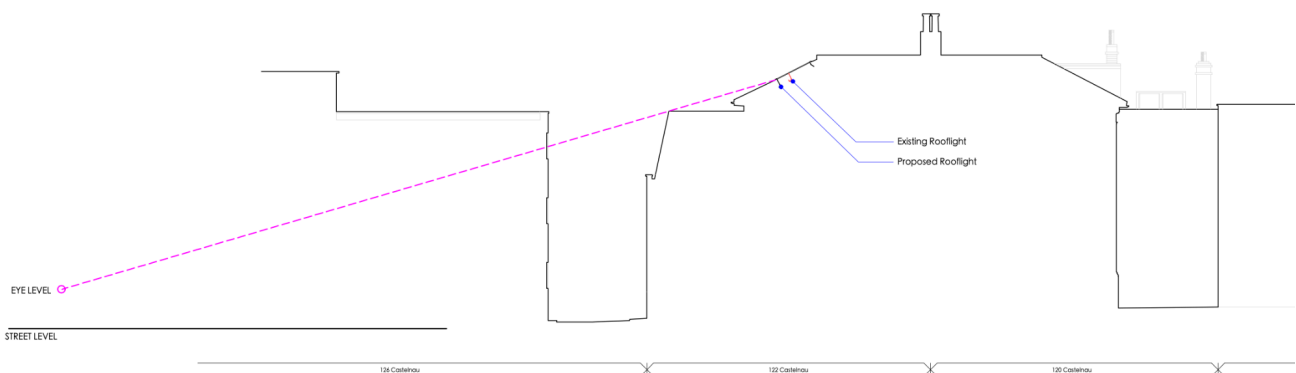


Fig.1 - View from Main Road.

The revised drawings, which reflect this updated rooflight strategy, are as follows:

- 1664.03.03.Pln01.002 Rev A showing Proposed Block Plan
- 1664.03.03.Pln01.024 Rev C showing Proposed Second Floor Plan
- 1664.03.03.Pln01.025 Rev B showing Proposed Roof Plan
- 1664.03.03.Pln01.040 Rev B showing Proposed Section A
- 1664.03.03.Pln01.041 Rev B showing Proposed Section B
- 1664.03.03.Pln01.061 Rev B showing Proposed Side (North) Elevation

For ease of reference, the outline of the existing rooflight position is indicated by a red dotted line within the updated drawings.

This proposal represents a considered adjustment that aligns with both the functional needs of the space and the conservation principles of the project.

Aubin Torck

For and on behalf of Michael Jones Architects