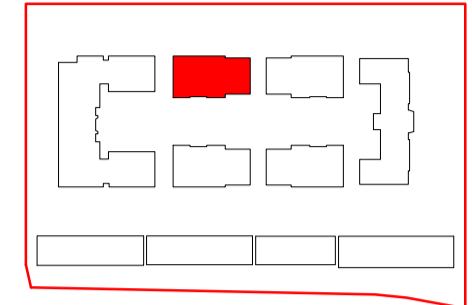


Block 3
Private - 25 Dwellings
5 Storeys

1B2P x 11
1B2P WCH x 2
2B3P x 3
2B4P x 7
3B5P x 1
3B6P x 1



Block Plan



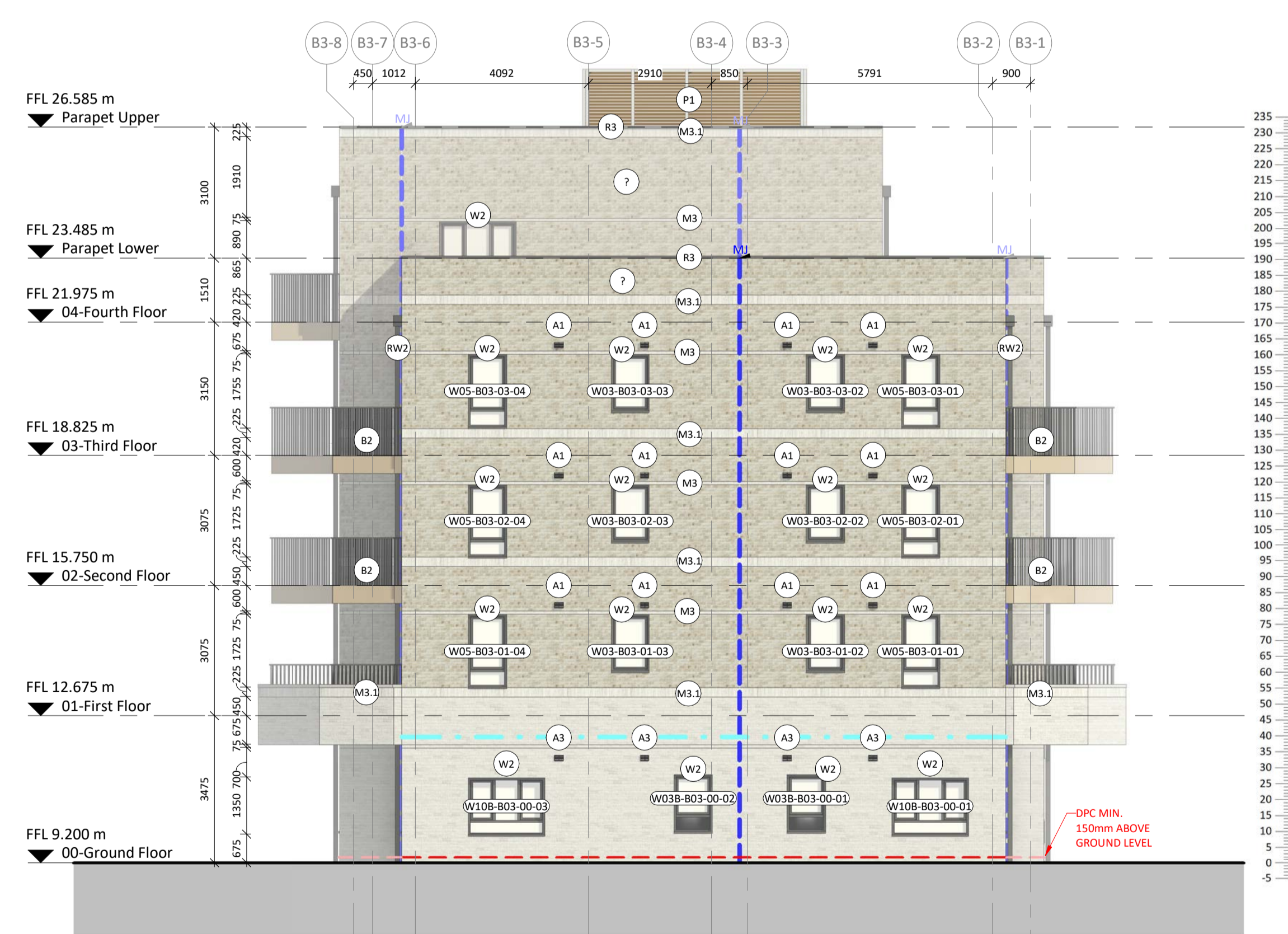
Elevation A
1: 100



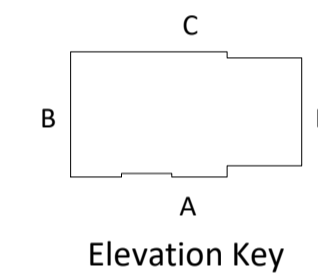
Elevation B
1: 100



Elevation C
1: 100



Elevation D
1: 100



Elevation Key

Balcony Types				
First Floor - Balcony with brick base				
Bedroom	Balcony type	Area min. required	Area provided	Total Count
1B2P	Balcony 1	5 msq.	5 msq.	3
2B4P	Balcony 3	7 msq.	8 msq.	3
(Total Count as per each floor) 6				
Typical Floor (2nd & 3rd floor) - Steel balcony				
Bedroom	Balcony type	Area min. required	Area provided	Total Count
1B2P	Balcony A	5 msq.	5.2 msq.	3
2B4P	Balcony C	7 msq.	8.1 msq.	3
(Total Count as per each floor) 6				
Fourth Floor - Steel balcony				
Bedroom	Balcony type	Area min. required	Area provided	Total Count
3B5P	Balcony C	8 msq.	8.1 msq.	2
(Total Count as per each floor) 2				
Total Count - Concrete balcony : 6				
Total Count - Steel balcony : 14				

Notes:
Do not scale. All dimensions are in millimetres unless otherwise stated. This drawing should be read in conjunction with all relevant project information and contract documentation. All dimensions to be checked prior to fabrication and/or commencement of works. All works to comply with all relevant legal standards, building regulations and warranty provider requirements. Report any discrepancies, if in doubt ask.

Revisions	Rev	Status	Date	Description	Rev	Chkd
	01	53	01.03.24	FIRST ISSUE	LB	LB
	02	53	17.05.24	Tender Issue Pack 2	LB	DL

Client Name: London Square	
Project Name: Richmond College	
Drawing Name: Block 3 - Elevations	
Drawing Number: RCL-BPTW-B03-ZZ-DR-A-2030	Rev: P02
Project No: 23-057	Status: 53
RIBA Stage: 4	Scale: 1:100 @ A1
PRELIMINARY - FOR COMMENT	

40 Norman Road,
Greenwich, London
SE10 9GX
t 020 8293 5175
bptw.co.uk



1:100m

MASONRY		
Elgin Blend with Natural Mortar	Woodstock Blend with Natural Mortar	Karma White with White Mortar
M1 - Stretcher Bond M1.1 - Solider Course M1.2 - Alternate 15mm Recessed Coursing M1.3 - Corbelled Detailing	M2 - Stretcher Bond M2.1 - Solider Course M2.2 - Alternate 15mm Recessed Coursing M2.3 - Corbelled Detailing	M3 - Stretcher Bond M3.1 - Solider Course M3.2 - Corbelled Detailing
A1 - Airbrick RAL TBC	A2 - Airbrick RAL TBC	A3 - Airbrick RAL TBC

DOORS AND WINDOWS
D1 - Communal Entrance Door. Colour Gold. RAL 1036 D2 - Communal Entrance Door. Colour Dark Grey. RAL 7016 D3 - Louvred Service Door. Colour Gold. RAL 1036 D4 - Louvred Service Door. Colour Dark Grey. RAL 7016 D5 - Flat Entrance Solid Timber Frame Door D6 - Roof Access Door. Colour Gold RAL 1036 D7 - Roof Access Door. Colour Dark Grey. RAL 7016
W1 - Metal framed windows. Colour Gold. RAL 1036 W2 - Metal framed windows. Colour Dark Grey. RAL RAL 7016 W3 - Bay window. Colour Dark Grey. RAL RAL 7016

BALCONIES AND CANOPIES
B1 - Balcony Railing Balustrading. Colour Gold. RAL 1036 B2 - Balcony Railing Balustrading. Colour Dark Grey. RAL 7016 B3 - Balcony Metal Panel Balustrading. Colour Gold. RAL 1036 B4 - Juliette Balcony. Glass Balustrading B5 - Balcony Privacy Screen. TBC
C1 - Entrance Canopy. Colour Gold. RAL 1036 C2 - Entrance Canopy. Colour Dark Grey. RAL 7016

ROOFING
R1 - Slate Tile. Colour Dark Grey R2 - Aluminium Coping. Colour Gold. RAL 1036 R3 - Aluminium Coping. Colour Dark Grey. RAL 7016

OTHER
L1 - Lettering TBC
RW1 - Rainwater pipe/guttering. Colour Gold. RAL 1036 RW2 - Rainwater pipe/guttering. Colour Dark Grey. RAL 7016
S1 - Precast reconstituted stone. REF96/LE.
P1 - Rooftop Louvred Plant Enclosure

ANNOTATION LEGEND
Masonry Support. Locations as per S.E. drawings
Movement Joint. Locations
Line of Damp Proof Course (DPC)
N.B. Refer to Clarion ER's for building signage
Extract air terminal as per MEP detail

REFERENCES
REFER TO BPTW GENERAL ARRANGEMENT SERIES: 1000 SERIES - General Arrangement Plans 2000 SERIES - Elevations 2300 SERIES - Height Rods
REFER TO BPTW DETAIL SERIES: 3000 SERIES - External Wall Details 3700 SERIES - Balcony Details
REFER TO BPTW SCHEDULE SERIES: 0200 SERIES - Window Schedules 0500 SERIES - External Door Schedules