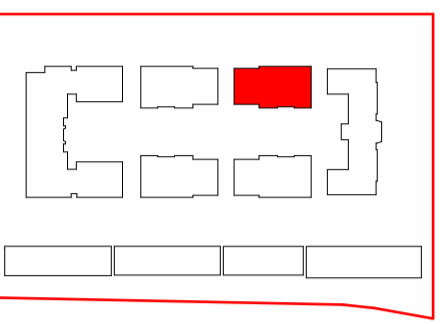


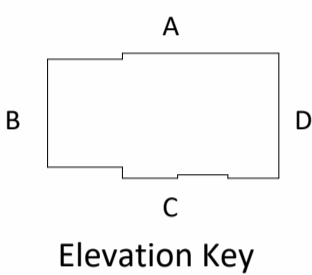
Block 4 (Block 3 Mirror)

Private - 25 Dwellings
5 Storeys

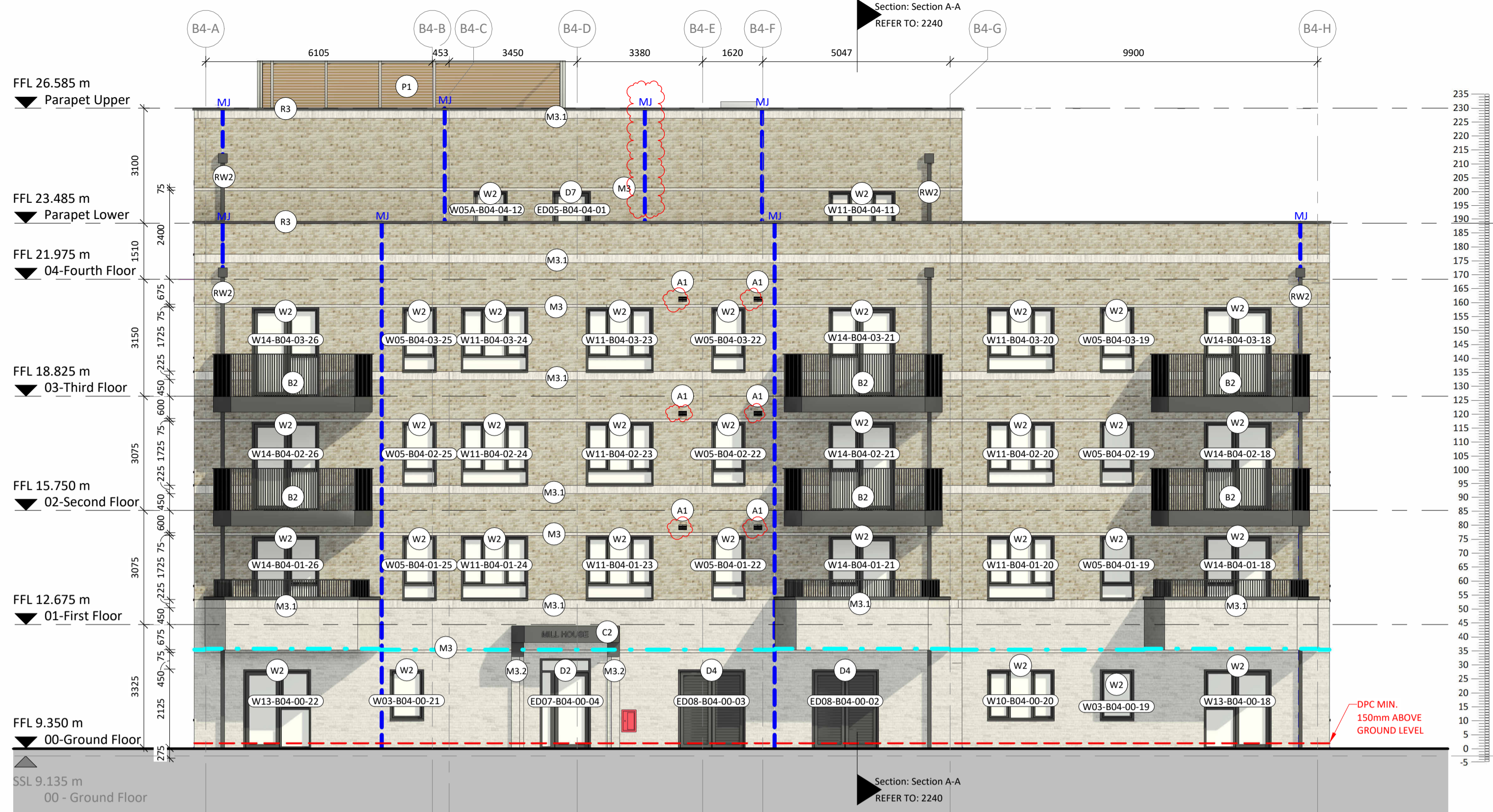
- 1B2P x 11
- 1B2P WCH x 2
- 2B3P x 3
- 2B4P x 7
- 3B5P x 1
- 3B6P x 1



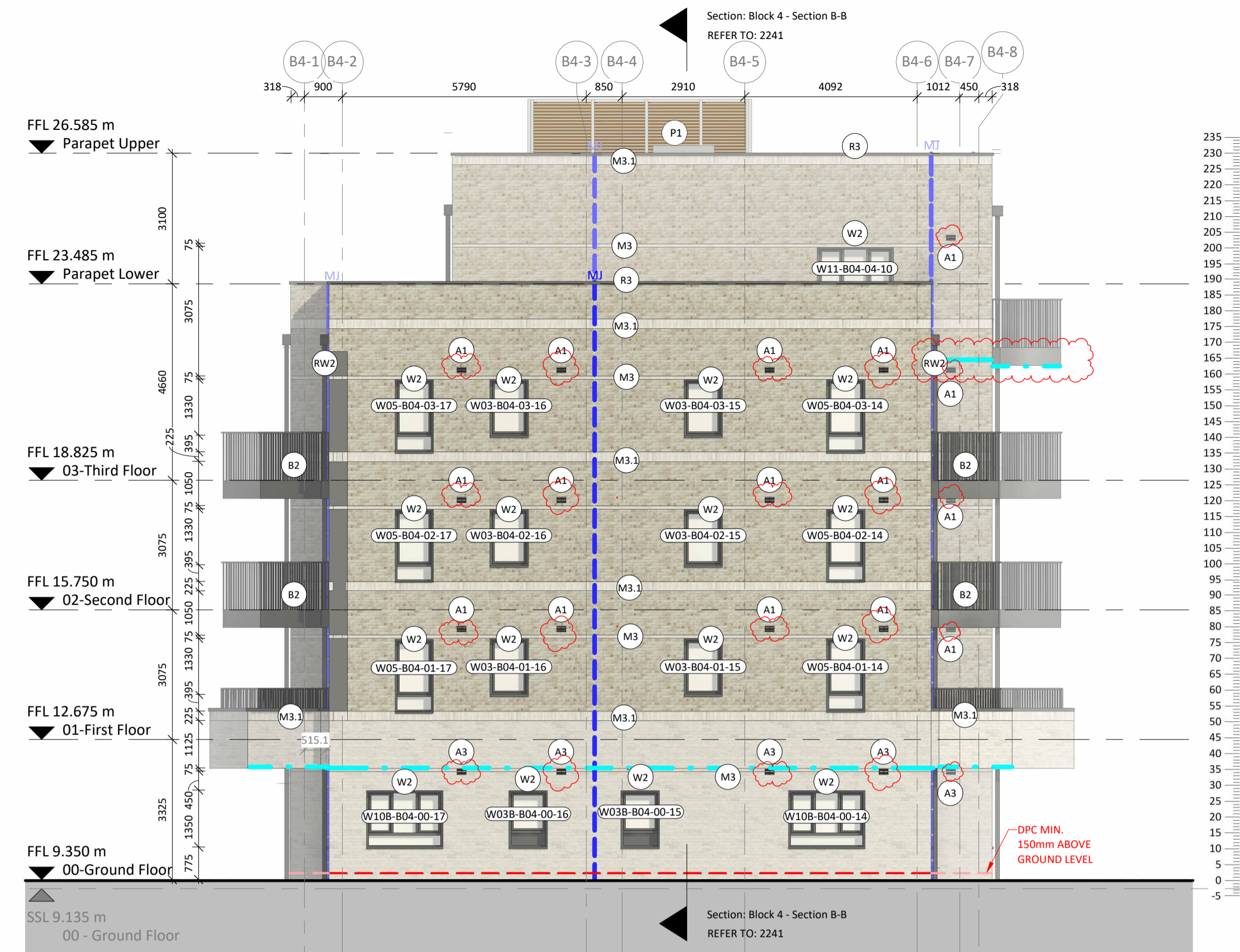
BLOCK PLAN



Elevation Key



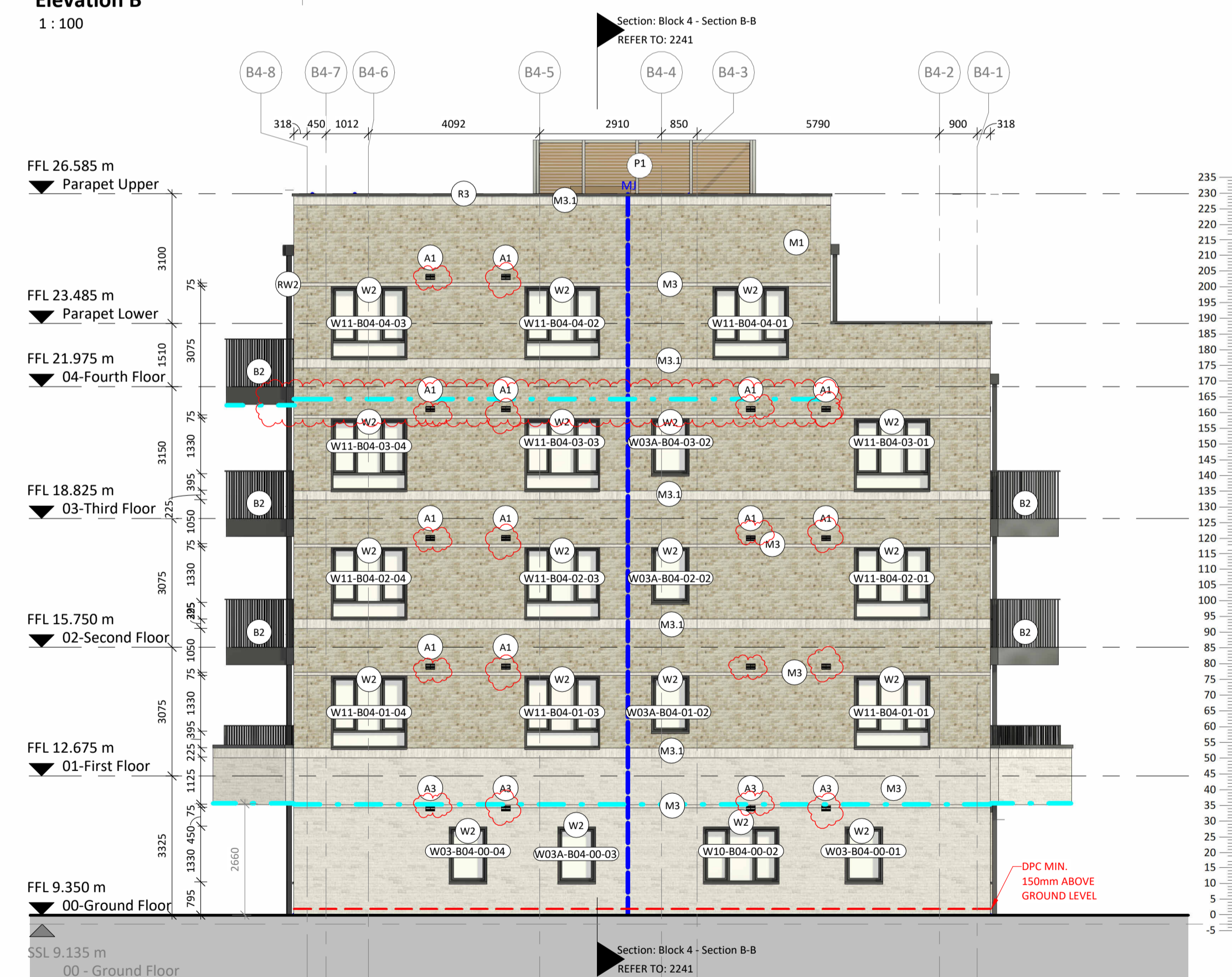
Elevation A
1: 100



Elevation B
1: 100



Elevation C
1: 100



Elevation D
1: 100

Notes:
Do not scale. All dimensions are in millimetres unless otherwise stated. This drawing should be read in conjunction with all relevant project information and contract documentation. All dimensions to be checked prior to fabrication and/or commencement of works. All regulations and warranty provider requirements. Report any discrepancies, if in doubt ask.

| Rev | Status | Date | Description | Rev | Chkd |
|-----|--------|----------|---|-----|------|
| P01 | S3 | 01.03.24 | FIRST ISSUE | LB | SI |
| P02 | S3 | 05.04.24 | Updates and added MIs. | SI | DL |
| P03 | S3 | 17.05.24 | Tender Issue Pack 2 | SI | DL |
| P04 | S3 | 22.11.24 | Ground floor window added; Air Bricks relocated, MS added on 4th floor, MJ added to reflect Curtins' drawing. | SI | SI |

Client Name: **London Square**

Project Name: **Richmond College**

Drawing Name: **Block 4 - Elevations**

Drawing Number: **RCL-BPTW-B04-ZZ-DR-A-2040**

Project No: **23-057** | RIBA Stage: **4** | Drawn By: **SJ** | Scale: **1:100 @ A1**

Rev: **P04** | Status: **S3**

PRELIMINARY - FOR COMMENT

40 Norman Road,
Greenwich, London
SE10 9GX
t 020 8293 5175
lptw.co.uk

| MASONRY | DOORS AND WINDOWS | BALCONIES AND CANOPIES | ROOFING | OTHER | ANNOTATION LEGEND | REFERENCES | | |
|---|---|--|--|--|--|---|---|---|
| <p>Elgin Blend with Natural Mortar</p> <p>M1 - Stretcher Bond M1.1 - Solider Course M1.2 - Alternate 15mm Recessed Coursing M1.3 - Corbelled Detailing</p> <p>A1 - Airbrick RAL TBC</p> | <p>Woodstock Blend with Natural Mortar</p> <p>M2 - Stretcher Bond M2.1 - Solider Course M2.2 - Alternate 15mm Recessed Coursing M2.3 - Corbelled Detailing</p> <p>A2 - Airbrick RAL TBC</p> | <p>Karma White with White Mortar</p> <p>M3 - Stretcher Bond M3.1 - Solider Course M3.2 - Corbelled Detailing</p> <p>A3 - Airbrick RAL TBC</p> | <p>D1 - Communal Entrance Door. Colour Gold. RAL 1036 D2 - Communal Entrance Door. Colour Dark Grey. RAL 7016 D3 - Louvred Service Door. Colour Gold. RAL 1036 D4 - Louvred Service Door. Colour Dark Grey. RAL 7016 D5 - Flat Entrance Composite Door. Brown colour. D6 - Roof Access Door. Colour Gold RAL. 1036 D7 - Roof Access Door. Colour Dark Grey. RAL 7016 D8 - House Entrance Door. Colour Dark Grey. RAL 7016</p> <p>W1 - Metal framed windows. Colour Gold. RAL 1036 W2 - Metal framed windows. Colour Dark Grey. RAL RAL 7016 W3 - Bay window. Colour Dark Grey. RAL RAL 7016</p> | <p>B1 - Balcony Railing Balustrading. Colour Gold. RAL 1036 B2 - Balcony Railing Balustrading. Colour Dark Grey. RAL 7016 B3 - Balcony Metal Panel Balustrading. Colour Gold. RAL 1036 B4 - Juliette Balcony. Glass Balustrading B5 - Balcony Privacy Screen. Colour Gold. RAL 1036 B6 - Balcony Privacy Screen. Colour Gold. RAL 7016</p> <p>C1 - Entrance Canopy. Colour Gold. RAL 1036 C2 - Entrance Canopy. Colour Dark Grey. RAL 7016</p> | <p>R1 - Slate Tile. Colour Dark Grey R2 - Aluminium Coping. Colour Gold. RAL 1036 R3 - Aluminium Coping. Colour Dark Grey. RAL 7016</p> | <p>L1 - Lettering TBC</p> <p>RW1 - Rainwater pipe/guttering. Colour Gold. RAL 1036 RW2 - Rainwater pipe/guttering. Colour Dark Grey. RAL 7016</p> <p>S1 - Precast reconstituted stone. REF96/LE.</p> <p>P1 - Rooftop Louvred Plant Enclosure</p> | <p>— Masonry Support. Locations as per S.E. drawings</p> <p>— MJ — Movement Joint. Locations</p> <p>— Line of Damp Proof Course (DPC)</p> <p>— Extract air terminal as per MEP detail</p> | <p>REFER TO BPTW GENERAL ARRANGEMENT SERIES:</p> <p>1000 SERIES - General Arrangement Plans 2000 SERIES - Elevations 2300 SERIES - Height Rods</p> <p>REFER TO BPTW DETAIL SERIES:</p> <p>3000 SERIES - External Wall Details 3700 SERIES - Balcony Details</p> <p>REFER TO BPTW SCHEDULE SERIES:</p> <p>0200 SERIES - Window Schedules 0500 SERIES - External Door Schedules</p> |