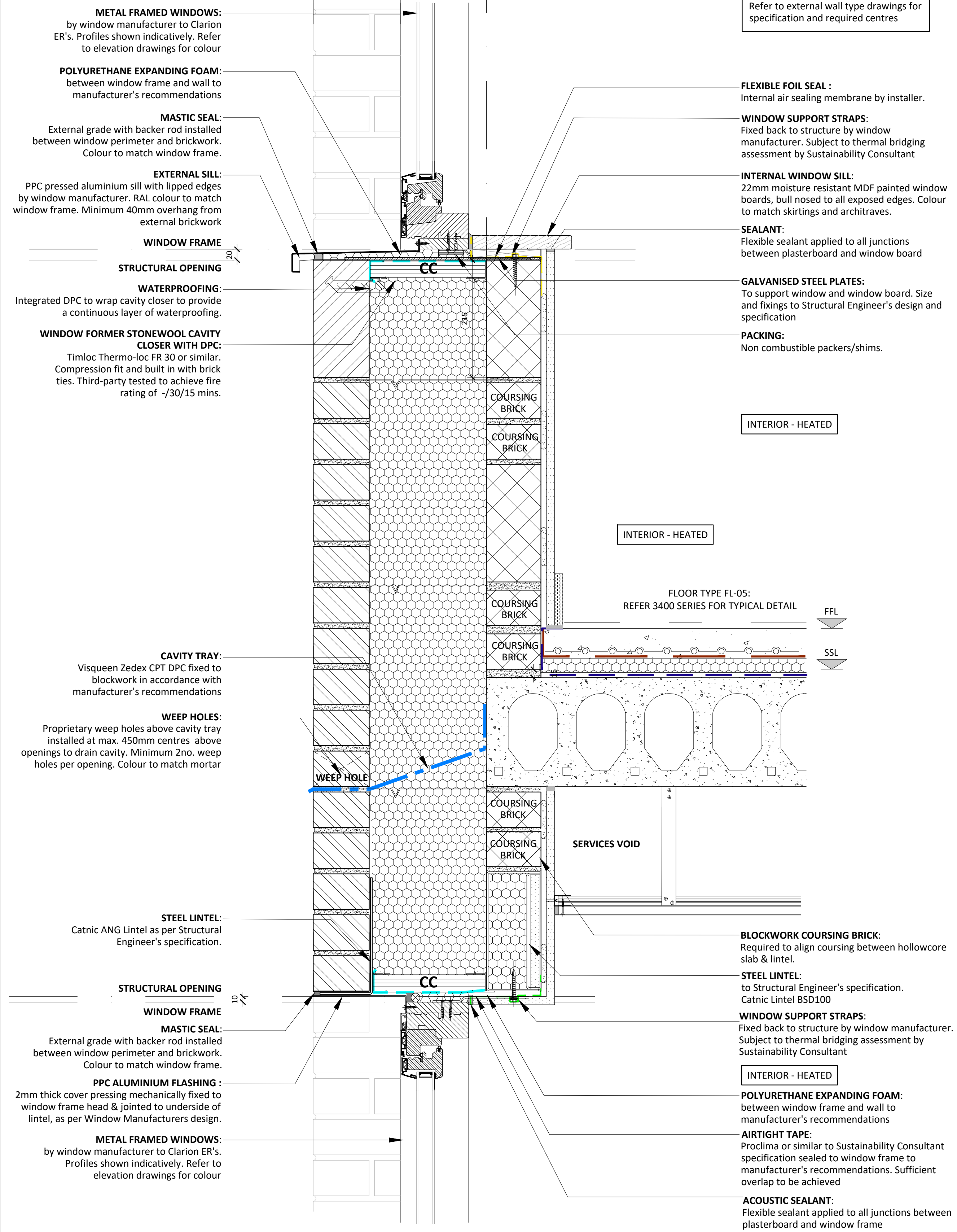


EXTERNAL WALL TYPE EW-01/EW-02
REFER 3000 SERIES FOR TYPICAL DETAIL

GL



Wall tie locations shown indicatively.
Refer to external wall type drawings for
specification and required centres

FLEXIBLE FOIL SEAL :
Internal air sealing membrane by installer.

WINDOW SUPPORT STRAPS:
Fixed back to structure by window
manufacturer. Subject to thermal bridging
assessment by Sustainability Consultant

INTERNAL WINDOW SILL:
22mm moisture resistant MDF painted window
boards, bull nosed to all exposed edges. Colour
to match skirtings and architraves.

SEALANT:
Flexible sealant applied to all junctions
between plasterboard and window board

GALVANISED STEEL PLATES:
To support window and window board. Size
and fixings to Structural Engineer's design and
specification

PACKING:
Non combustible packers/shims.

INTERIOR - HEATED

INTERIOR - HEATED

FLOOR TYPE FL-05:
REFER 3400 SERIES FOR TYPICAL DETAIL

FFL

SSL

SERVICES VOID

BLOCKWORK COURSING BRICK:
Required to align coursing between hollowcore
slab & lintel.

STEEL LINTEL:
to Structural Engineer's specification.
Catnic Lintel BSD100

WINDOW SUPPORT STRAPS:
Fixed back to structure by window manufacturer.
Subject to thermal bridging assessment by
Sustainability Consultant

INTERIOR - HEATED

POLYURETHANE EXPANDING FOAM:
between window frame and wall to
manufacturer's recommendations

AIRTIGHT TAPE:
Proclima or similar to Sustainability Consultant
specification sealed to window frame to
manufacturer's recommendations. Sufficient
overlap to be achieved

ACOUSTIC SEALANT:
Flexible sealant applied to all junctions between
plasterboard and window frame

MEMBRANES KEY

- High Performance DPC
- DPC to cavity/fire barriers
- Waterproofing Layer
- Tanking Primer
- Detailing Cover Strip
- Air and Vapour Control Layer (AVCL)
- Breather Membrane
- Separating membrane
- EPDM
- Airtightness Tape
- Flexible Foil Seal
- Fixing Strip
- Acoustic Resilient Layer

Notes:
Do not scale. All dimensions are in millimetres unless otherwise
stated. This drawing should be read in conjunction with all relevant
project information and contract documentation. All dimensions to
be checked prior to fabrication and/or commencement of works. All
works to comply with all relevant legal standards, building
regulations and warranty provider requirements. Report any
discrepancies, if in doubt ask.

Rev	Status	Date	Description	Dim	Chkd
PO1	S3	12.10.24	FIRST ISSUE		RQ

Client Name: **London Square**

Project Name: **Richmond College**

Drawing Name: **Masonry Blocks - Window Detail W/ Blockwork Coursing**

Drawing Number:	Rev:	Status:
RCL-BPTW-ZZ-ZZ-DR-A-3952	PO1	S3

Project No:	RIBA Stage:	Drawn By:	Scale:
23-057	4	RQ	1:5 @ A1

PRELIMINARY - FOR COMMENT

40 Norman Road,
Greenwich, London
SE10 9GX
t. 020 8293 5175
bptw.co.uk