

22 QUEENS ROAD, TEDDINGTON, TW11 0LR

FIRE SAFETY STRATEGY



THAMES DESIGN AND BUILD
DITTON GARAGES, SOUTHVILLE ROAD,
THAMES DITTON, KT70UL

1.0 FIRE SAFETY MEASURES

- Mains wired smoke & Co2 alarm will be fitted
- A fire extinguisher with fire blanket will be placed in a suitable location in case of emergencies

2.0 CONSTRUCTION METHODS

- Construction methods will be put in place by the main contractor during the works to limit fire safety risks during construction
- Non-combustible materials will be used for the floor, wall finishes and fire rated plasterboard will be used on the ceiling through, lowering the chance of the spread of flame
- All proposed steel's will be coated in intumescent paint (or similar) to achieve the recommended fire protection period
- Internal fire rated doors fitted throughout the property as part of the extension and refurbishment

3.0 MEANS OF ESCAPE

- An unobstructed route will be provided through the internal central thoroughfare of the building to front of house
- There will be a clear and open route, free from any obstacles, from the building to the Evacuation Assembly Point 1 on Queens Road, Teddington
- If the internal central thoroughfare is inaccessible due to unforeseen obstructions, in the garden, there is a side access out into the main road and a gate into the far rear boundary of the garden leading into a road going towards Teddington Health & Social Care Centre Main Entrance & Carpark and can be used as a third means of escape (Means of Escape 3)

3.0 EVACUATION STRATEGY

- An evacuation strategy will be put in place and reviewed for the lifetime of the building
- Upon seeing a fire, or hearing the fire alarm, all occupants will leave the building through the internal central thoroughfare
- If there are any person(s) who are unaware of the fire or unable to hear the alarm, they should be informed immediately and told/guided to evacuate
- Upon evacuation, occupants should follow the route shown on the Fire Strategy drawing and meet at the Evacuation Assembly Point [TDB-253-PD-14]

- The emergency services should be called once in the Evacuation Assembly Point, and occupants should wait there until services arrive

4.0 ACCESS & EQUIPMENT

- An area has been allocated for fire and rescue pumping equipment to be sited in case of a fire
- An external water tap is located on 22 Queens Road, to be used if needed.
- Firefighting services will be looking for road hydrants in the area of Queens Road to source water from in the event of a fire
- Access to the garden can be achieved through the central internal thoroughfare, as well as rear gate access to the garden

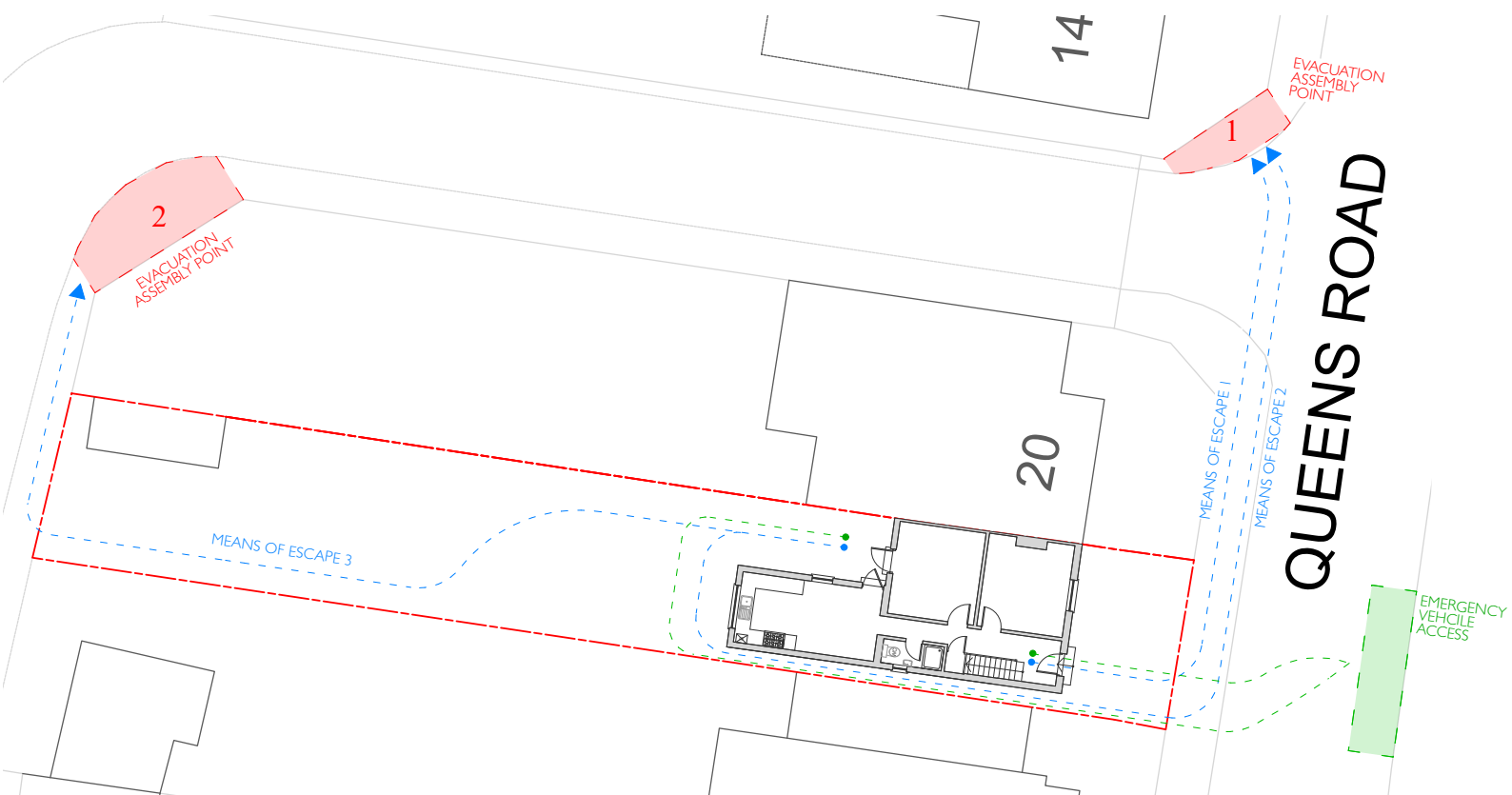


IMAGE 1: TDB-253-PD-14 -Proposed Fire Strategy



IMAGE 2: Photographs of Evacuation Assembly Point 1



IMAGE 3: Means of Escape – Rear Garden Gate Out



IMAGE 4: Photographs of Evacuation Assembly Point 2