



**Proposed plans**

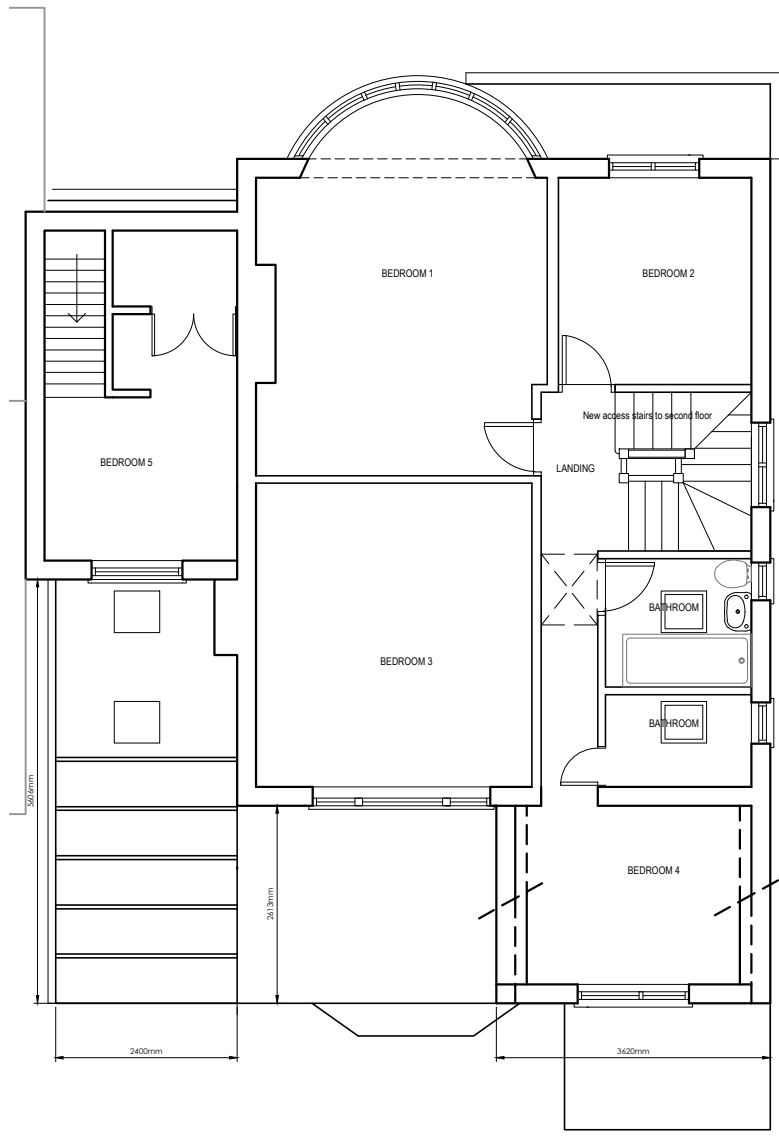
4 Lauderdale Drive,  
Richmond upon Thames,  
TW10 7BT

**Planning**

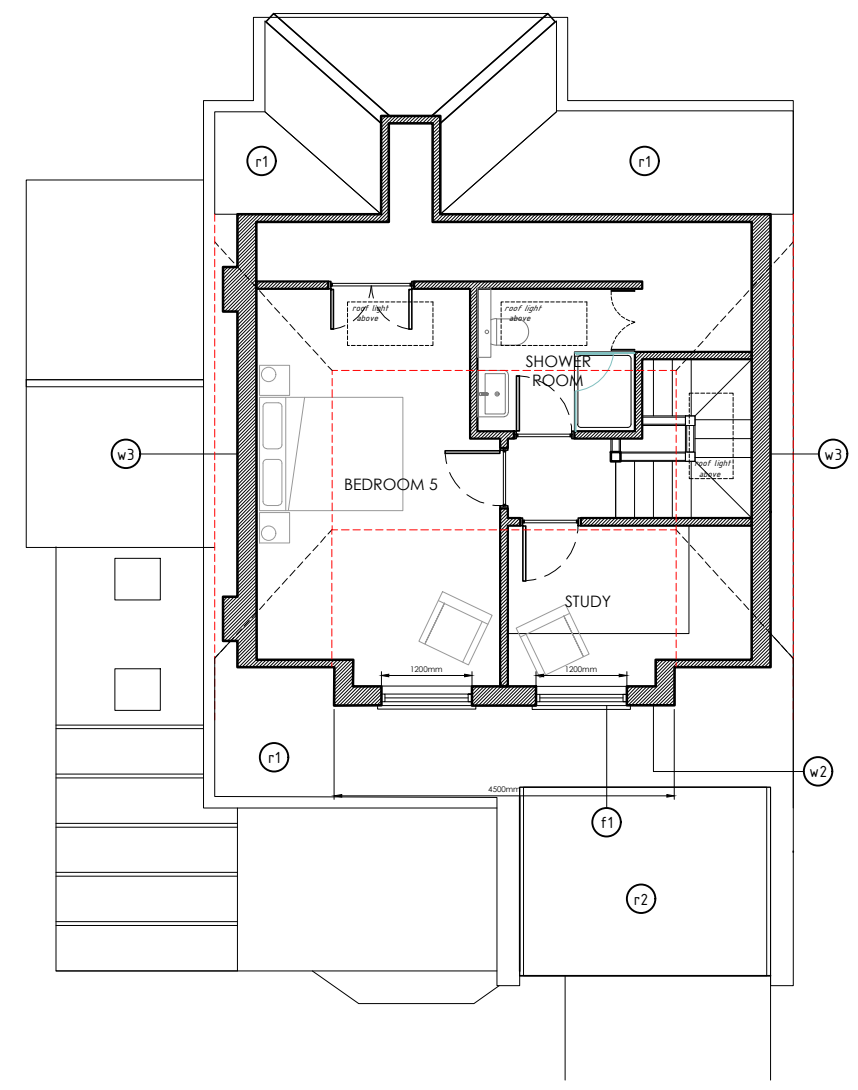
Scale @ A3: 1:100

Date: 06.01.2025

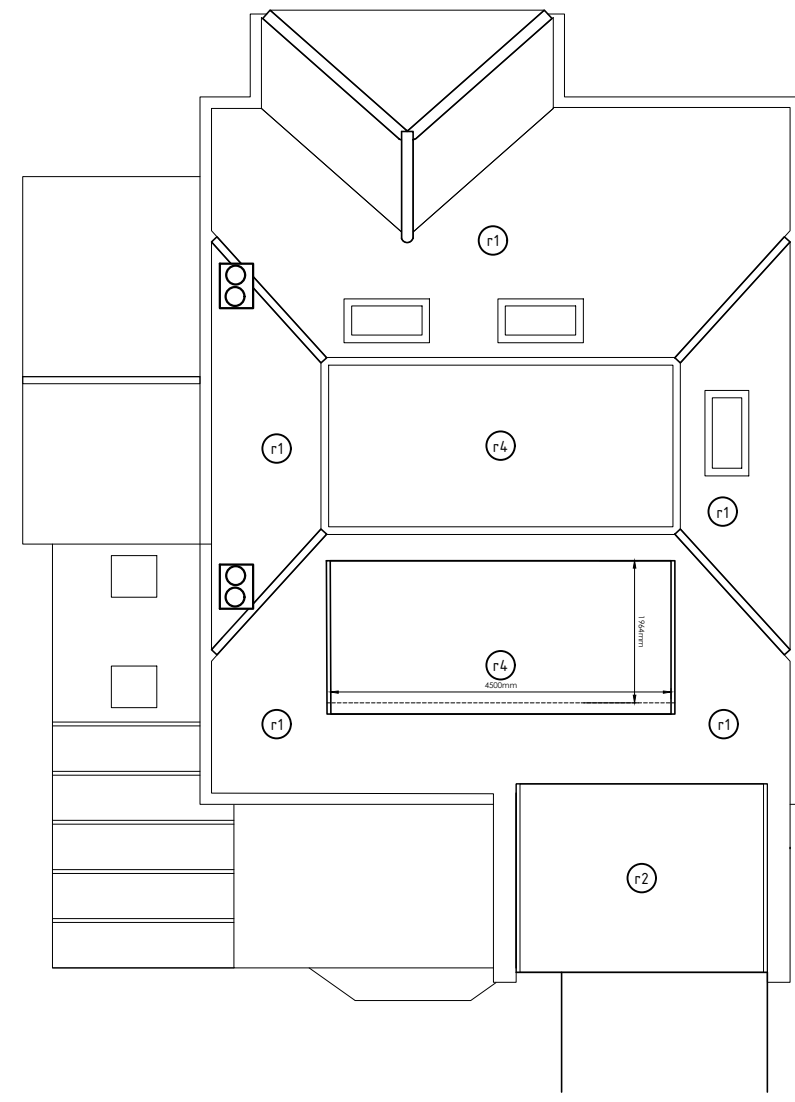
Drg no: BL0559/A3/0.008



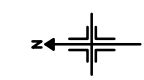
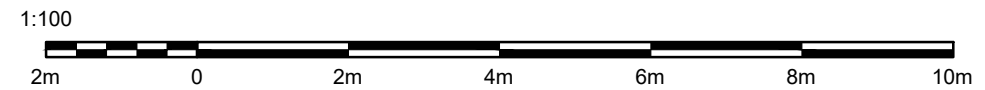
**Proposed First floor plan**



**Proposed Second floor plan**



**Proposed roof plan**



**PROPOSED MATERIALS & FINISHES**

EXTERNAL WALLS (Outermost material)	ROOFING (Pitched and Flat Roofs)	FENESTRATION (Windows, Doors, Rooflights)	RAINWATER GOODS (Gutters, Downpipes)
<p>Ⓦ1 MATERIAL : London stock brick Finish : self finish Colour : Yellow</p>	<p>Ⓡ1 MATERIAL : Clay tile Finish : Self finish Colour : Terracotta</p>	<p>ⓕ1 MATERIAL : PVCu Finish : Self finish Colour : White</p>	<p>ⓖ1 MATERIAL : PVCu Finish : Self finish Colour : Black</p>
<p>Ⓦ2 MATERIAL : clay hanging tile Finish : self finish Colour : terracotta</p>	<p>Ⓡ2 MATERIAL : Asphalt Finish : Self finish Colour : Dark grey/Black</p>		
<p>Ⓦ3 MATERIAL : Facing Brickwork Finish : Self finish Colour : Red</p>	<p>Ⓡ3 MATERIAL : slate style tile Finish : Self finish Colour : Dark grey/Black</p>		
	<p>Ⓡ4 MATERIAL : Single ply membrane Finish : Self finish Colour : Dark grey/Black</p>		

**NOTES**

1. This drawing is copyright of Bespoke living. Reproduction is only to take place with written authority.
2. These plans are subject to "Planning & Building Regulation Approval" or any other statute in law before building work commences.
3. Any structural work where mentioned on this drawing is subject to a qualified structural and civil engineer calculations before building work commences.
4. All drawings marked preliminary are not to be built or manufactured from.
5. If any discrepancies are found in the drawings these are to be brought to the attention of bespoke living for rectification.
6. All materials and building components specified must be installed in accordance with the manufacturers instructions.

ALL NEW MATERIALS TO MATCH EXISTING

