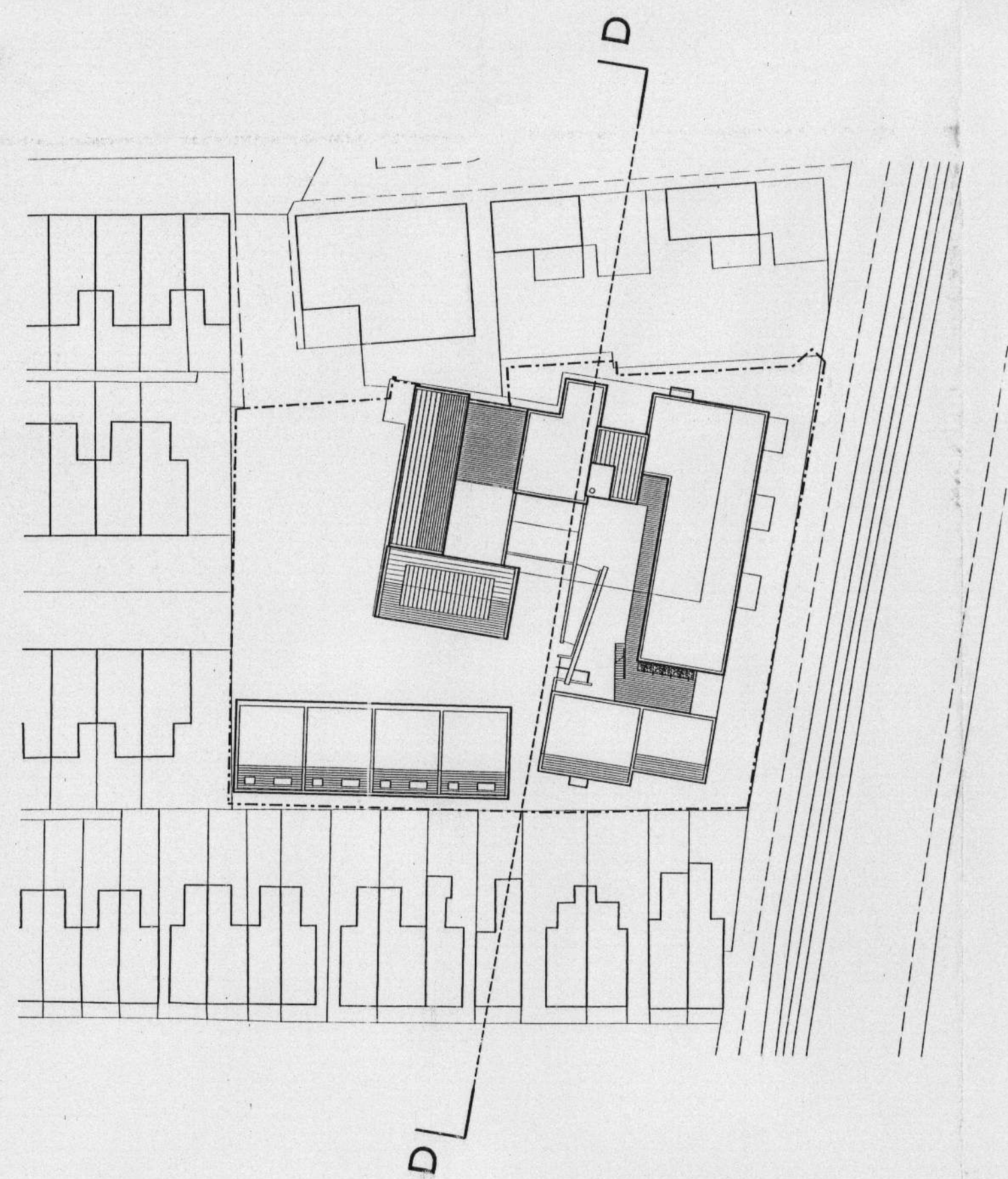
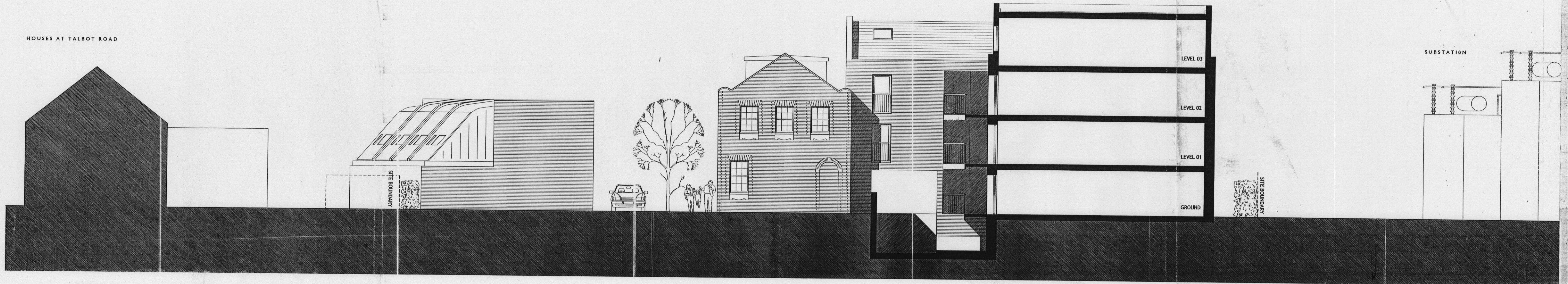


HOUSES AT TALBOT ROAD



**MATERIALS**

- WALLS - BUFF STOCK FACING BRICK TO MATCH EXISTING
- STAIR CORES - GREY FINISHED ALUMINIUM FRAMED GLAZING
- LIFT 'TOWERS' - ZINC CLADDING
- ROOFS - SLATE TILING, ZINC CLADDING, LEAD COLOURED SHEET, EXTENSIVE GREEN ROOF, TO EXISTING AND NEW BUILD
- NEW DORMERS TO EXISTING BUILDING TO BE LEAD COLOURED SHEET
- WINDOWS - GREY FINISHED ALUMINIUM
- DOORS - TIMBER FINISH
- BALCONIES - GALVANISED METAL RAILINGS & SUPPORTS, TIMBER HANDRAILS & TIMBER SIDE PANELS TO BALCONIES ON NORTH FACADE
- ACCESS BALCONIES - GALVANISED METAL RAILINGS & SUPPORT CHANNELS, TIMBER HANDRAILS & TIMBER DECKING
- RAINWATER GOODS - GALVANISED METAL
- OTHER METALWORK - GALVANISED METAL

**PLANNING**

HAMILTON ROAD, TWICKENHAM

FOR HAMILTON LOFTS SECTION DD

ACANTHUS LW ARCHITECTS

JOB NO. 3593  
DRAWING PL50  
SCALE 1:100 @ A1

PI  
ACANTHUS LW ARCHITECTS

020 8994 2288 fax 020 8747 9001  
Voysey House, Barley Mow Passage, Chiswick London W4 4PH

REVISION P1 PRELIMINARY ISSUE

BY CHKD APRV DATE  
SP CR 18.05.07

THE DRAWING IS COPYRIGHT. ALL RIGHTS RESERVED. IT IS TO BE USED ONLY FOR THE PROJECT AND INFORMATION IS TO BE REFERRED TO THE ARCHITECTS.