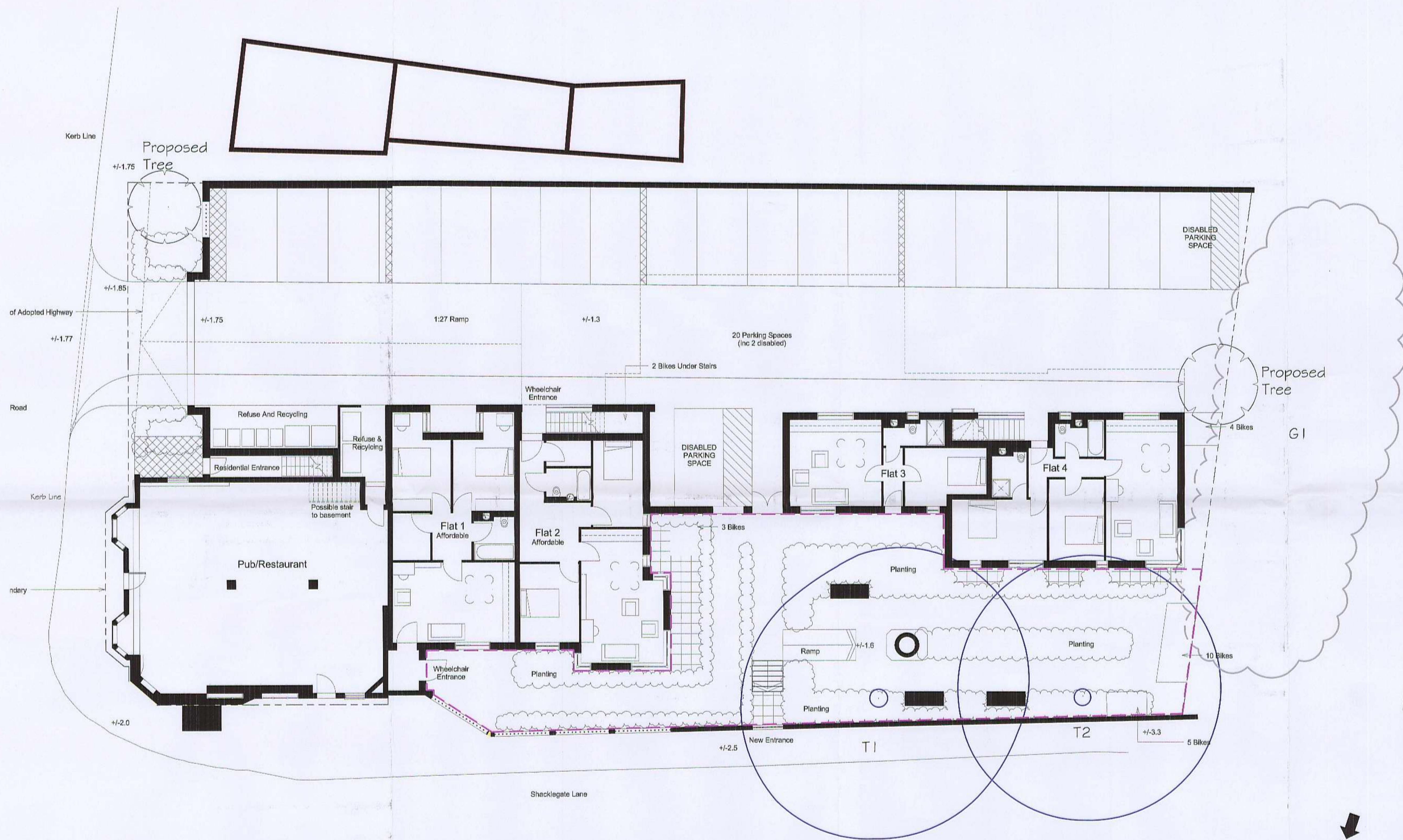
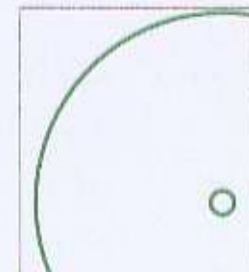
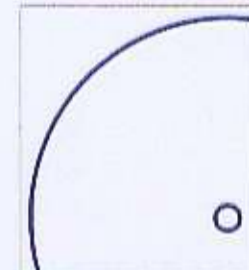


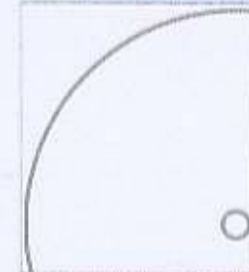
DO NOT SCALE

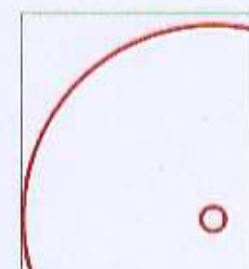
07/3470/FUL




- 

Category A
Those of high quality and value
- 

Category B
Those of moderate quality and value
- 

Category C
Those of low quality and value
- 

Category R
Those in such a condition that any existing value would be lost within 10 years and which should, in the current context, be removed for reasons of sound arboricultural management
- 

Root Protection Areas in accordance with BS 5837:2005

LONDON BOROUGH OF RICHMOND UPON THAMES
05 OCT 2007
PLANNING

1/04/07	A	Root Protection Area revised plus indicative trees.
1/04/07	B	Root Protection Area Revised.
1/04/07	C	Overlaid on proposed layout.
REVISIONS		

Title
Tree Survey, Proposed Layout and Root Protection Area

Client
Dukelease Property Ltd

Project
Waldegrave Arms, Teddington

Date	August 2007	Drawn by	HPS
Drawing No	260603-P-01C	Scale	1:100@A1

TIM MOYA ASSOCIATES
ARBORICULTURAL & LANDSCAPE CONSULTANTS

96 GREENWAY BUSINESS CENTRE
HARLOW BUSINESS PARK
HARLOW
ESSEX CM19 5QE

Tel: 0845 094 3268
Fax: 0845 094 3269

www.tma-consultants.co.uk

