

04/12/05/FUL

TRIBAL ARCHITECTS  
RIVERSIDE OFFICES, BLOCK A, LITTLEBROOK BUSINESS PARK,  
DARTFORD, KENT DA1 5PZ  
Tel: 01322 827900 Fax: 01322 290155  
E-mail: eod@tribalps.co.uk Website: www.tribalps.co.uk  
BRISTOL  
1 PORTLAND SQUARE, BRISTOL BS2 0BR  
Tel: 0117 314 8411 Fax: 0117 314 8422  
LEEDS  
TRIBAL HOUSE, HAWTHORN PARK,  
COAL ROAD, LEEDS LS14 1PQ  
Tel: 0113 308 0200 Fax: 0113 308 0205

Rev	Date	By	Amendment
A	25/03/04	vs	Updated following comment from planning officer
B	04/05/04	vs	Amended to suite varied client requirement

LONDON BOROUGH OF RICHMOND UPON THAMES  
10 MAY 2004  
PLANNING

04/02/03/FUL

LEGEND

TRIBAL  
A member of Tribal Group PLC

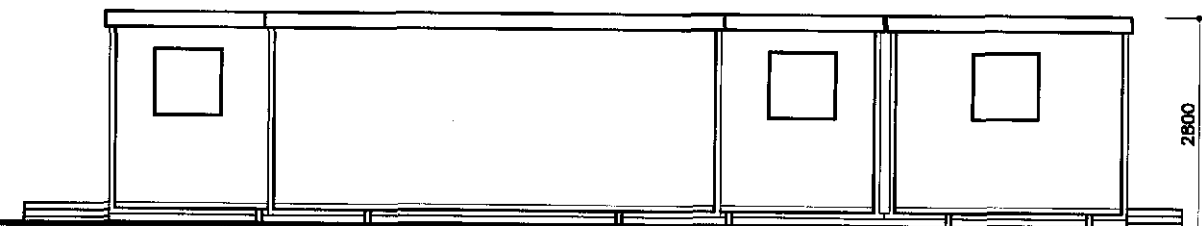
ASH DESIGN  
LONDON  
RIVERSIDE OFFICES, BLOCK A, LITTLEBROOK BUSINESS PARK,  
DARTFORD, KENT DA1 5PZ  
Tel: 01322 827900 Fax: 01322 290155  
E-mail: eod@tribalps.co.uk Website: www.tribalps.co.uk  
BRISTOL  
1 PORTLAND SQUARE, BRISTOL BS2 0BR  
Tel: 0117 314 8411 Fax: 0117 314 8422  
LEEDS  
TRIBAL HOUSE, HAWTHORN PARK,  
COAL ROAD, LEEDS LS14 1PQ  
Tel: 0113 308 0200 Fax: 0113 308 0205

Client: St. MARY'S COLLEGE TWICKENHAM  
Project: TEMPORARY CHANGING ROOMS PORTA CABIN STRUCTURE  
Drawing: ELEVATIONS

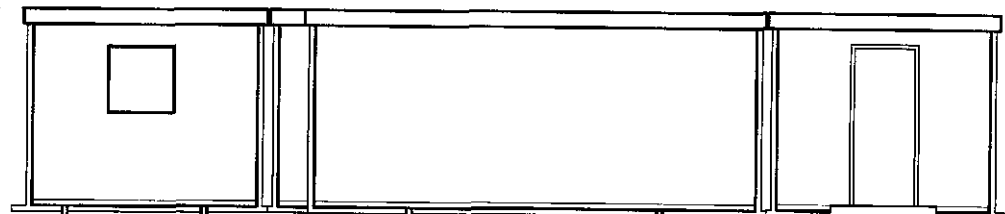
Date: 24/03/04	Scale: 1/100 @ A3	Drawn by: VB
Checked by:	Released:	
Project No: 0378	Sheet No: 10	Revision: B

OFFICE  
DRAWING

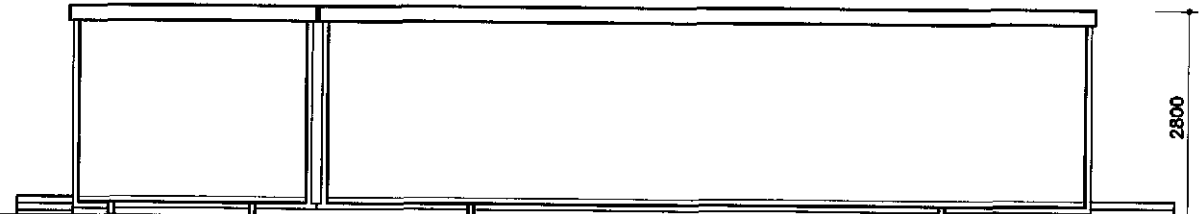
APPROVED



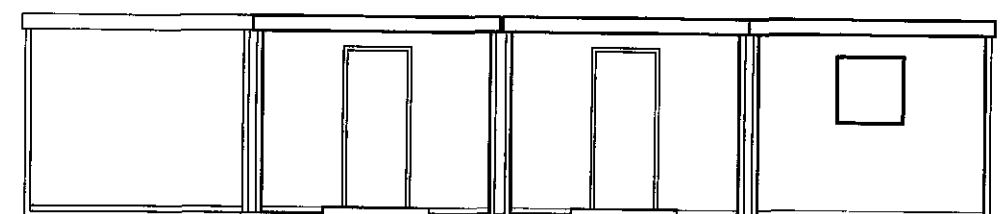
ELEVATION-A



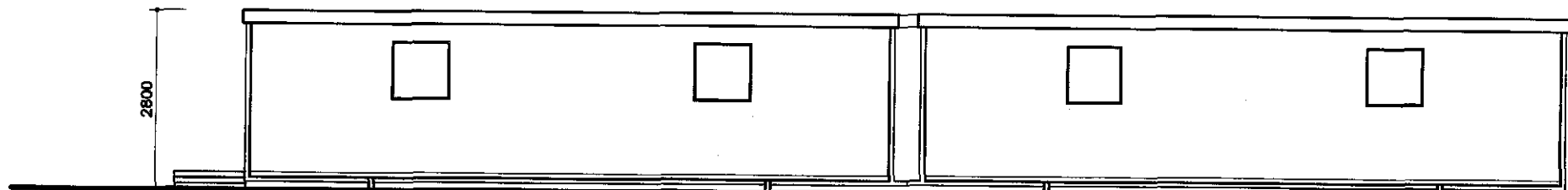
ELEVATION-B



ELEVATION-C



ELEVATION-D



ELEVATION-F