

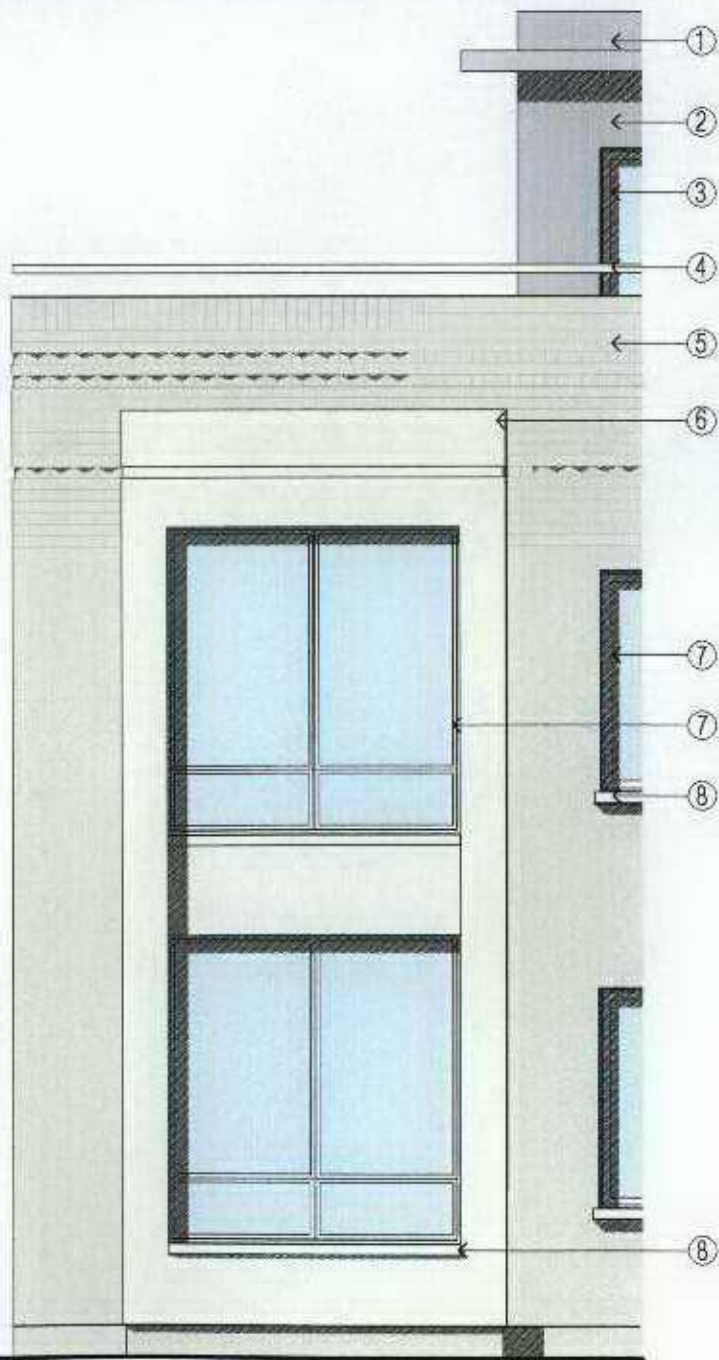
PHOTO MONTAGE ST MARGARETS ROAD

08/03071/FUL

RECEIVED  
18 APR 2008  
PLANNING



WEST ELEVATION



1 SEDUM ROOF MAT



2 STANDING SEAM VERTICAL ZINC CLADDING

3 PAINTED TIMBER WINDOWS  
COLOUR :MID GREY

4 PAINTED GALVANISED MILD STEEL HANDRAIL  
COLOUR :LIGHT STONE



5 YELLOW FACING BRICK  
BONDED DOG TOOTH DENTAL COURSE



6 THROUGH - COLOURED RENDER  
COLOUR :LIGHT STONE

7 PAINTED TIMBER WINDOWS  
COLOUR :OFF WHITE

8 RECONSTRUCTED STONE SUBCILL  
COLOUR :BATH STONE

RAINWATER DOWNPIPES AND HOPPERS  
COLOUR :OFF WHITE

TOUGHENED GLASS AND GALVANISED MILD STEEL  
PAINTED FINISH TO REAR ELEVATION BALCONIES.  
COLOUR :LIGHT STONE

Project  
361 - 367A ST MARGARET'S ROAD

Drawing  
MATERIALS AND FINISHES

Drawing No.  
SMR - 111

Scale  
1:200 1:50 @ A3

Date  
07.04.08

CLIVE CHAPMAN  
ARCHITECTS

4 EGL PIE ISLAND  
TWICKENHAM MIDDX  
TW1 3DY  
TELEPHONE 020 8891 4837  
FACSIMILE 020 8744 1152  
E MAIL CC@CCAR.CO.UK