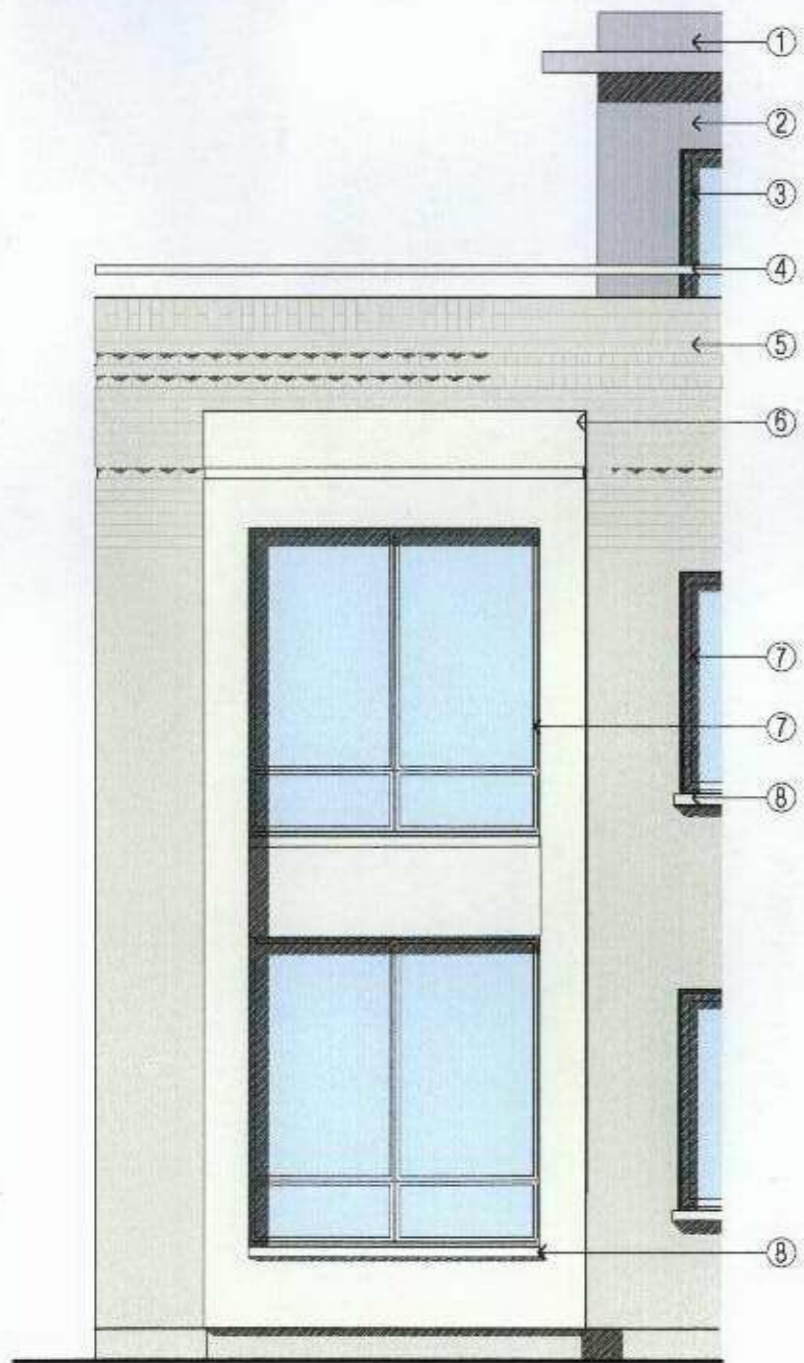


PHOTO MONTAGE ST MARGARETS ROAD



WEST ELEVATION



1 SEDUM ROOF MAT



2 STANDING SEAM VERTICAL ZINC CLADDING

3 PAINTED TIMBER WINDOWS
COLOUR: MID GREY

4 PAINTED GALVANISED MILD STEEL HANDRAIL,
COLOUR: LIGHT STONE



5 YELLOW FACING BRICK,
BONDED DOG TOOTH DENTAL COURSE



6 THROUGH - COLOURED RENDER
COLOUR: LIGHT STONE

7 PAINTED TIMBER WINDOWS,
COLOUR: OFF WHITE

8 RECONSTRUCTED STONE SUBCILL
COLOUR: BATH STONE

RAINWATER DOWNPIPES AND HOPPERS
COLOUR: OFF WHITE

TOUGHENED GLASS AND GALVANISED MILD STEEL
PAINTED FINISH TO REAR ELEVATION BALCONIES.
COLOUR: LIGHT STONE

Project
361 - 367A ST MARGARET'S ROAD

Drawing
MATERIALS AND FINISHES

Drawing No.
SMR - 111

Scale
1:200 1:50 @ A3

Date
07.04.08

CLIVE CHAPMAN
ARCHITECTS

4 BEE PIE ISLAND
TWICKENHAM MIDDX
TW1 3DY
TELEPHONE 020 8891 4837
FACSIMILE 020 8744 1152
E MAIL CC@CCAR.CO.UK