

Fig. 1: Lots Road power station, Chelsea (London Transport)

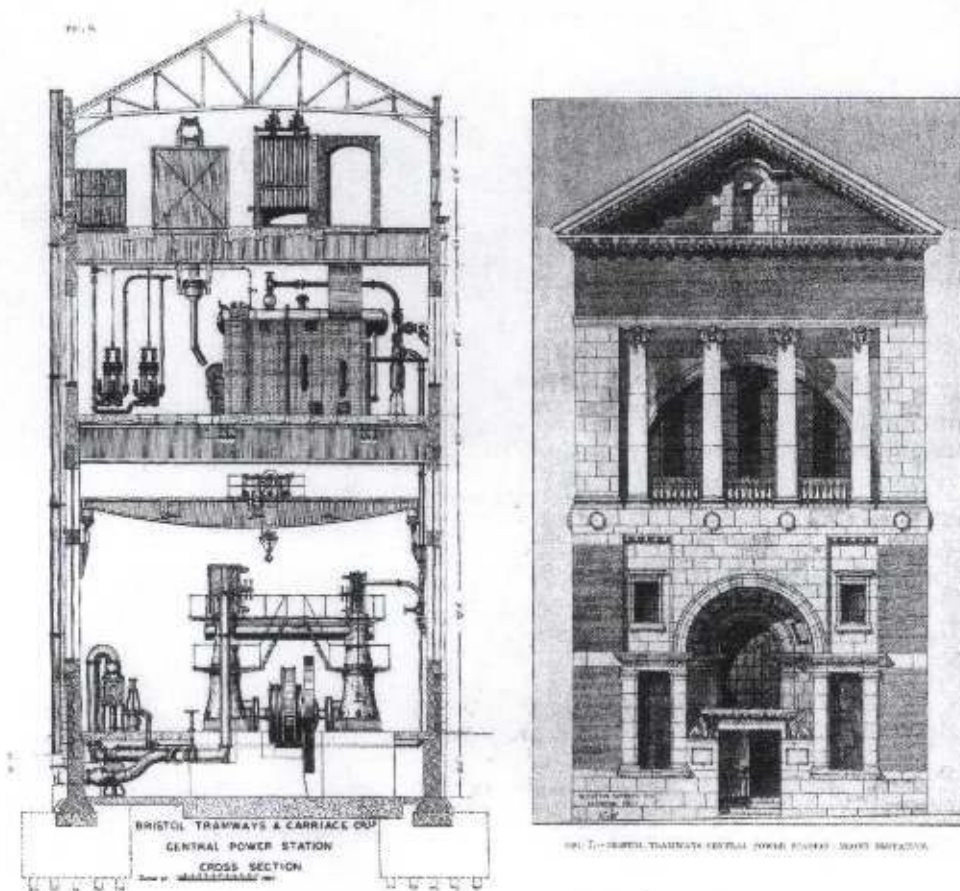


Fig. 2: Bristol Tramways and Carriage Company central generating station (RIBA Journal 1904)





Fig. 3: Bristol Tramway and Carriage Company central generating station



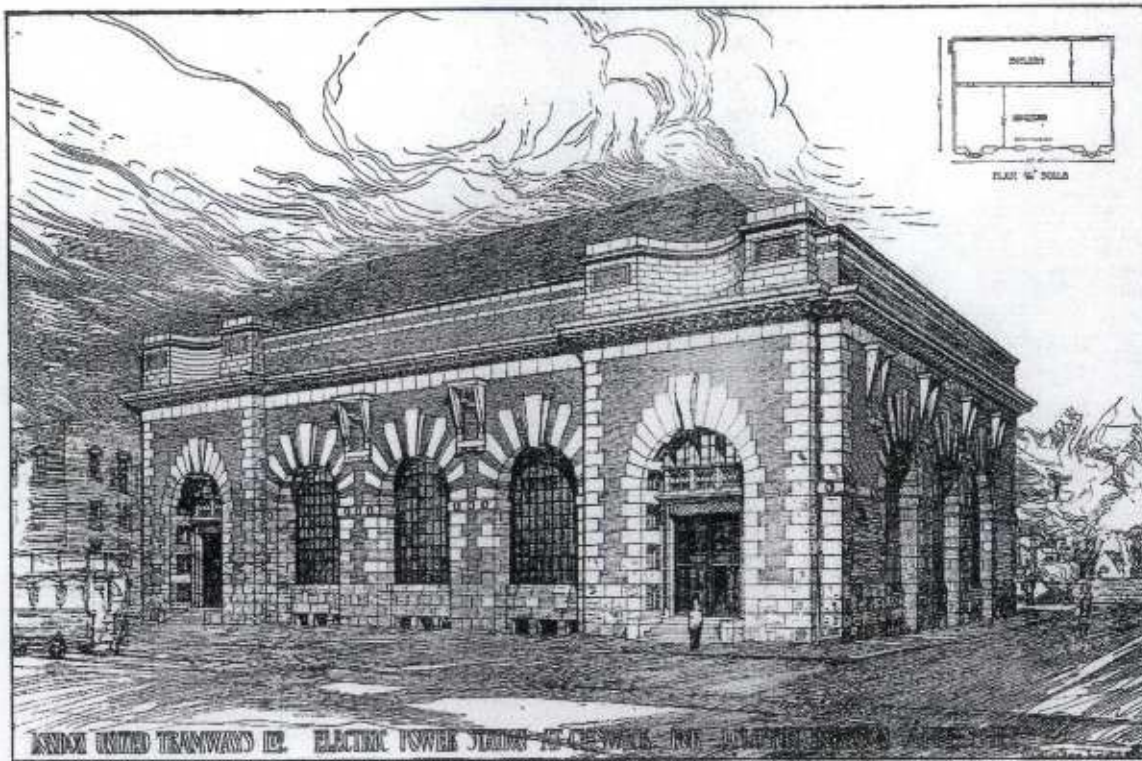


Fig. 4: London United Tramway Company generating station, Chiswick (RIBA Journal 1904)



Fig. 5: London United Tramway Company generating station, Chiswick



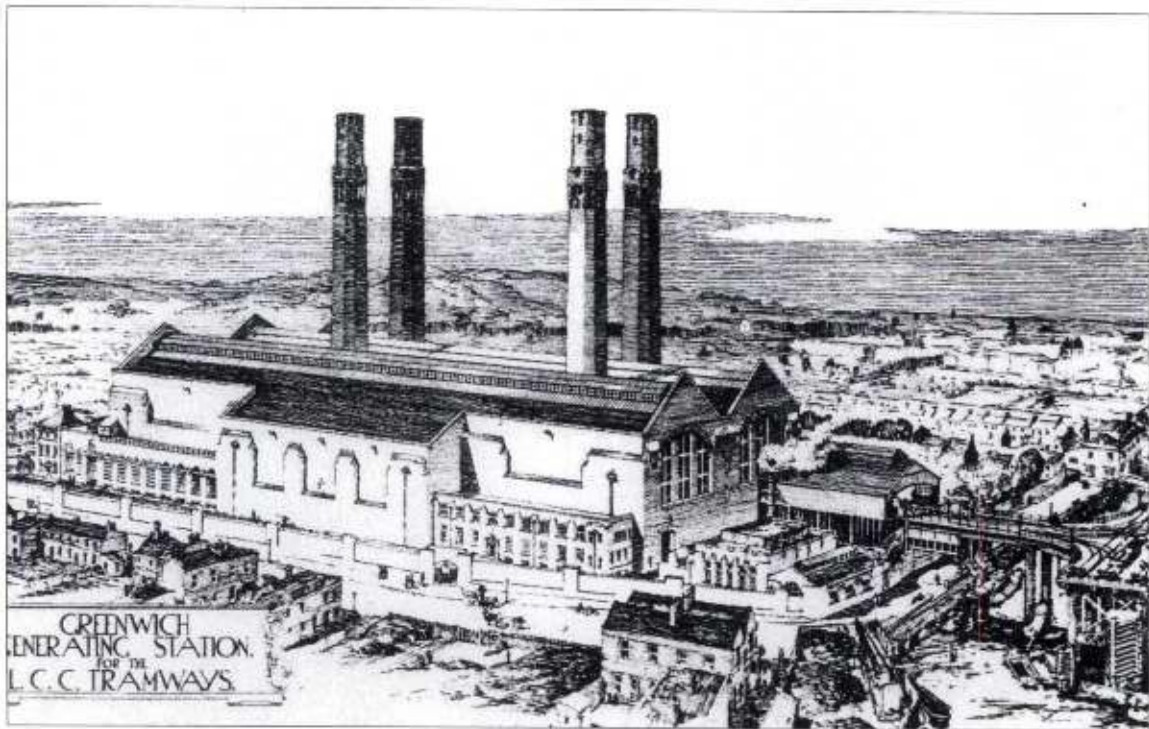


Fig. 6: London County Council power station, Greenwich (RIBA) Journal 1909)

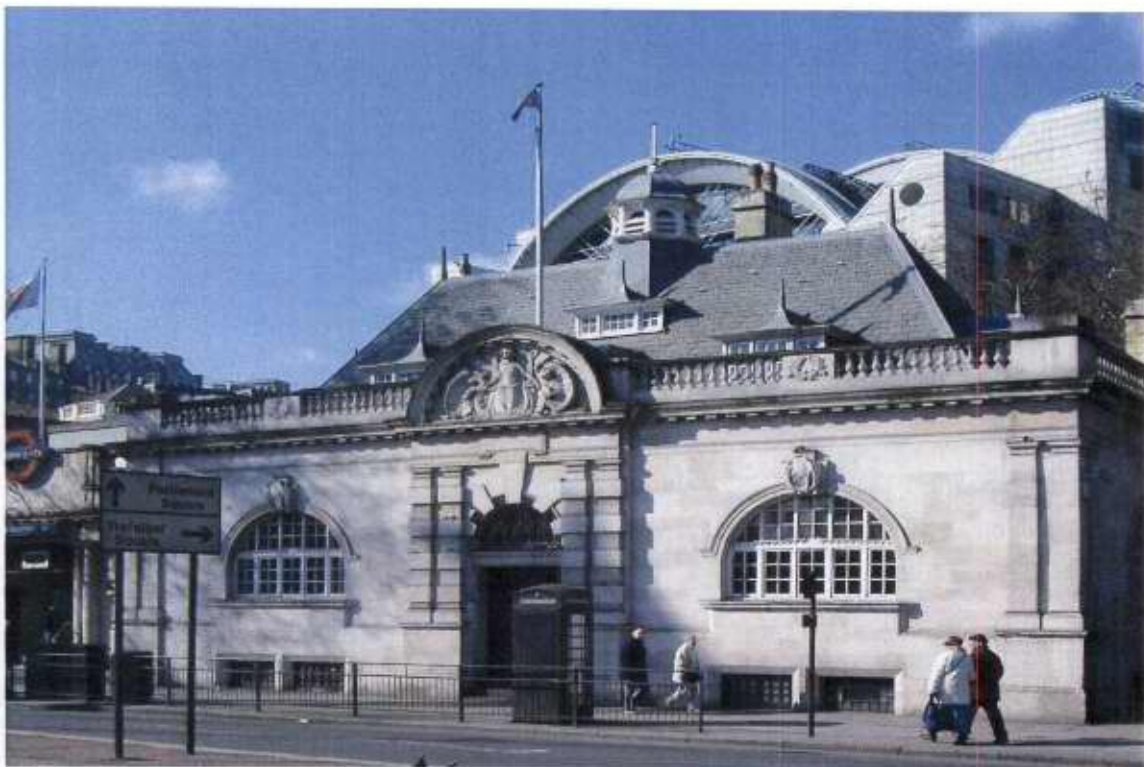


Fig. 7: London County Council generating station, Victoria Embankment

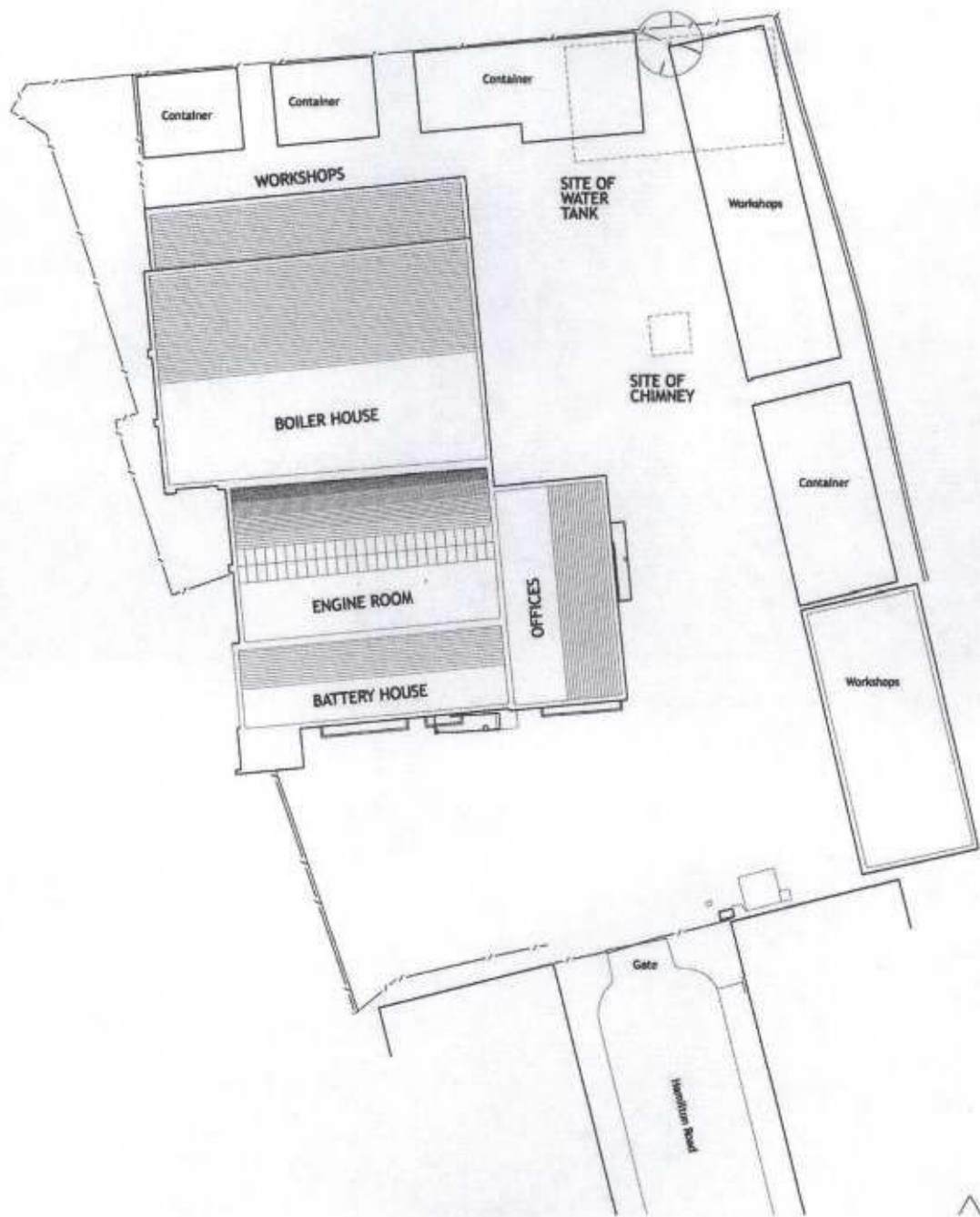


Fig. 8: Site Plan





Fig. 9: The generating station at Hamilton Road, Twickenham, from the south-east



Fig. 10: The offices of the generating station at Hamilton Road, Twickenham



Fig. 11: The east elevation of the boiler house of the generating station at Hamilton Road, Twickenham



Fig. 12: The north elevation of the workshops of the generating station at Hamilton Road, Twickenham



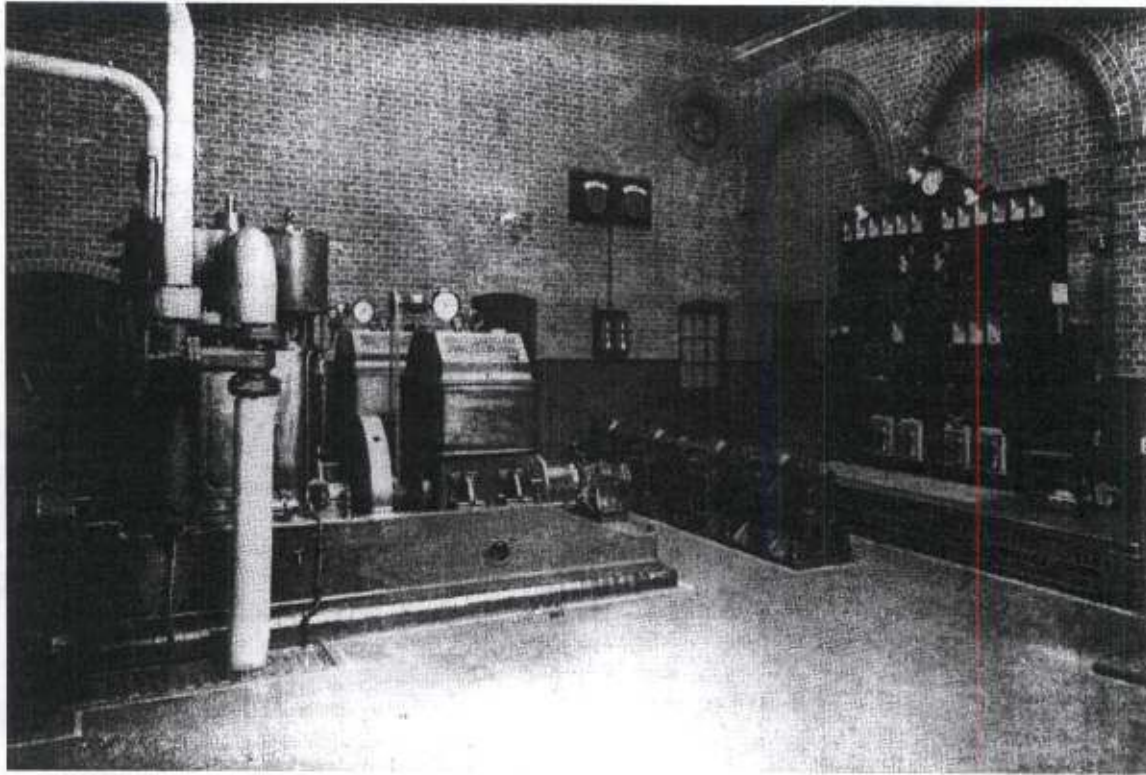


Fig. 13: The interior of the engine room 1903 (Richmond Local Studies Library LCF/4821/TW)

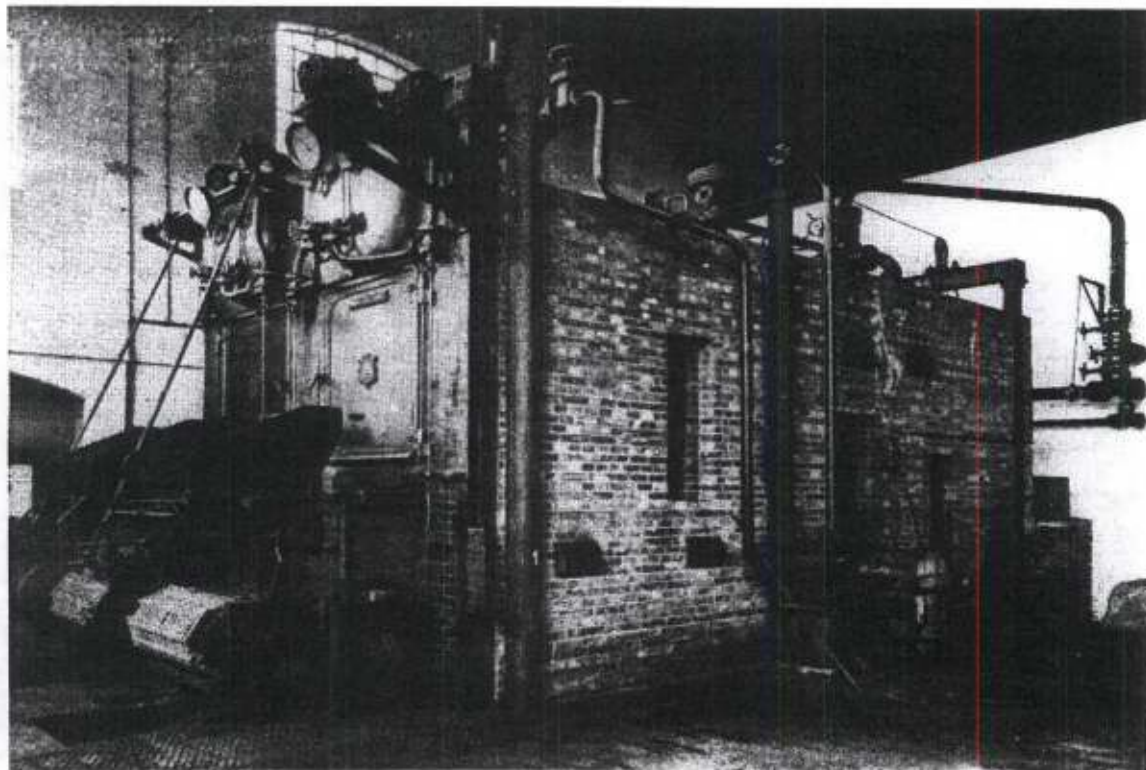


Fig. 14: The boilers in the boiler house 1903 (Richmond Local Studies Library LCF/4819/TW)



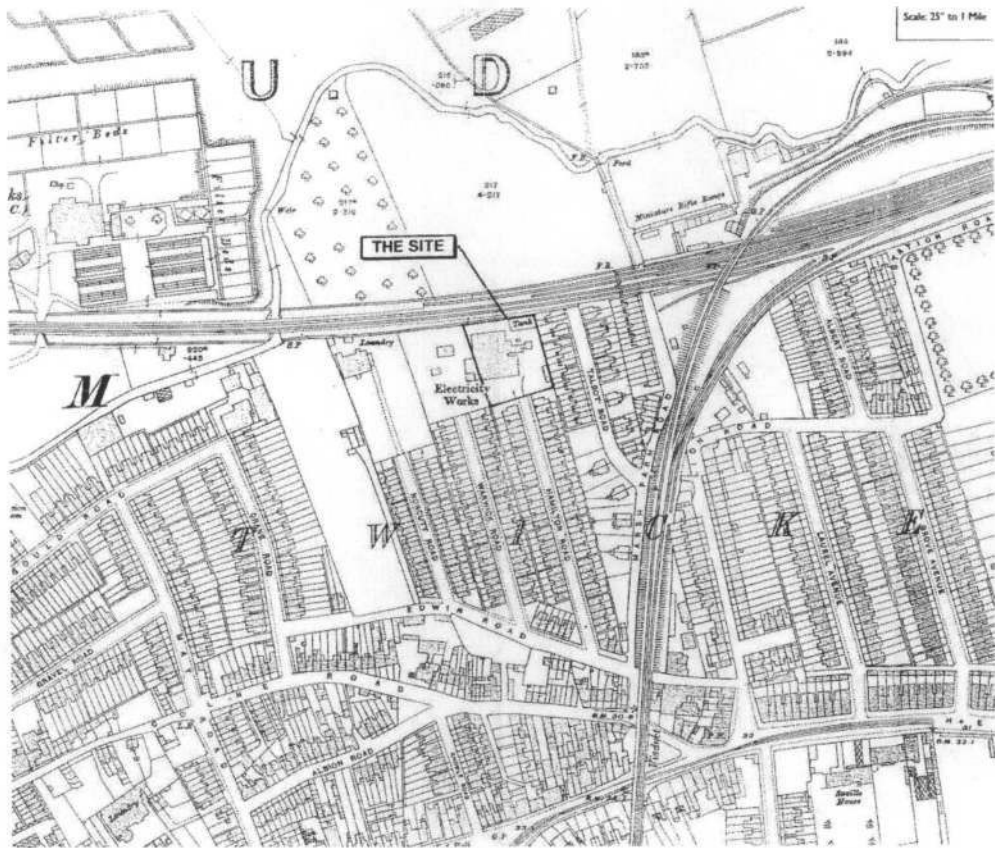


Fig. 15: Extract from the 1915 Ordnance Survey Middlesex Sheet XX-15 25 inch to one mile map

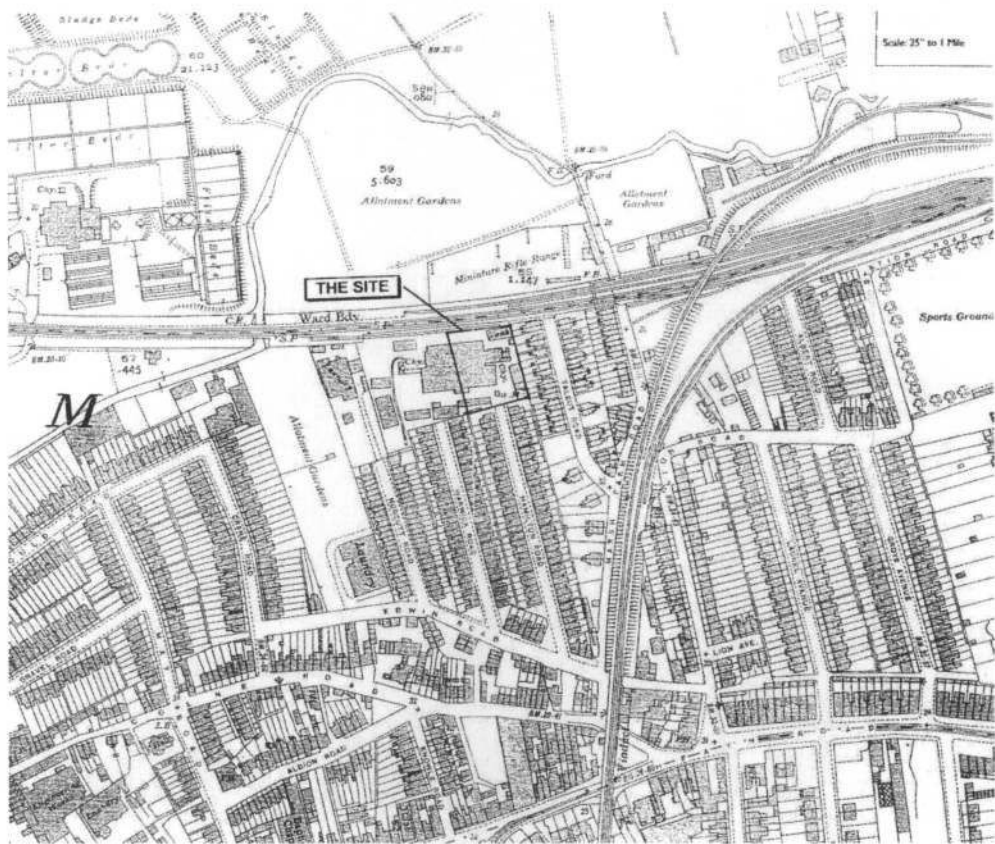


Fig. 16: Extract from the 1934 Ordnance Survey Middlesex Sheet XX-15 25 inch to one mile map

**37 HAMILTON ROAD, TWICKENHAM**  
For: Hamilton Lofts Ltd.

**Appendix b**  
**Structural Engineers Report**  
**on Existing Buildings**

Acanthus LW Architects, Voysey House, Chiswick, London W4 4PN. 020 8994 2288. Contact: Christopher Richards.  
Hamilton Lofts Ltd, 20 Mortlake High Street, London SW14 8JN. 020 8392 6600. Contact: Bill Bailey.

