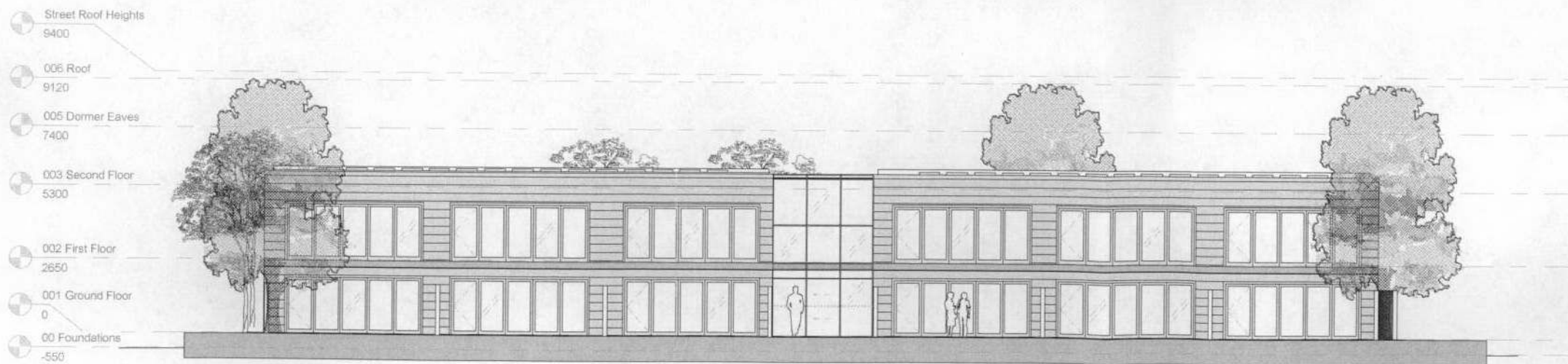




205 Front Commercial Elevation
1:200

Materials Key:

- a. UK sourced, reclaimed steel flat roof.
- b. 650mm x 1000mm insulated Eurostone panels.
- c. Treated, FSC approved timber composite infill panel on steel frame.
- d. FSC approved, timber framed full height window, with double glazed low e glazing.
- e. 1000mm painted steel balustrade, fixed to timber decking floor.
- f. 2000mm high, masonry site boundary wall.
- g. FSC approved, timber framed full height door, with double glazed low e glazing.
- h. Full height automatic sliding door, with double glazed low e glazing.
- i. Low e, double glazed curtain wall, fixed on steel frame.
- j. 750mm x 1500mm solar thermal panels, achieving code level 4 requirements.
- k. Sedum 'green roof' system on polyester mat, with 100mm masonry up stand.



206 Rear Commercial Elevation
1:200

No. Notes
 1. Dimensions to be verified on site. Only figured dimensions to be used and any discrepancies in dimensions are to be reported to the architect. No dimensions are to be scaled from printed drawings. Any areas indicated on this drawing are for guidance only. No responsibility is taken for their accuracy.
 2. There is a risk of injury or death in construction if the works are not properly planned and supervised. The contractor must not undertake any element of the work without first having carried out the necessary risk assessments and prepared detailed method statements.

08/2651/FUL



Submitted for planning 29/07/2008
 No. Revision Date



Barrett Lloyd Davis Associates LLP
 535, Kings Road, London, SW10 0SZ
 Tel: 020 7838 5555
 Fax: 020 7838 5556
 e-mail: mail@blda.co.uk
 www.blda.co.uk

job: 9-23 Third Cross Road
 proj: Third Cross Road
 dwg: Front & Rear Commercial Elevations

dwg. type: Preliminary
 dwg. status: Planning
 drawn by AD checked by HC approved by PB
 scale 1:200@A3 size A3 date 04/07/08
 job number drawing number revision
 2523 P205/206 *