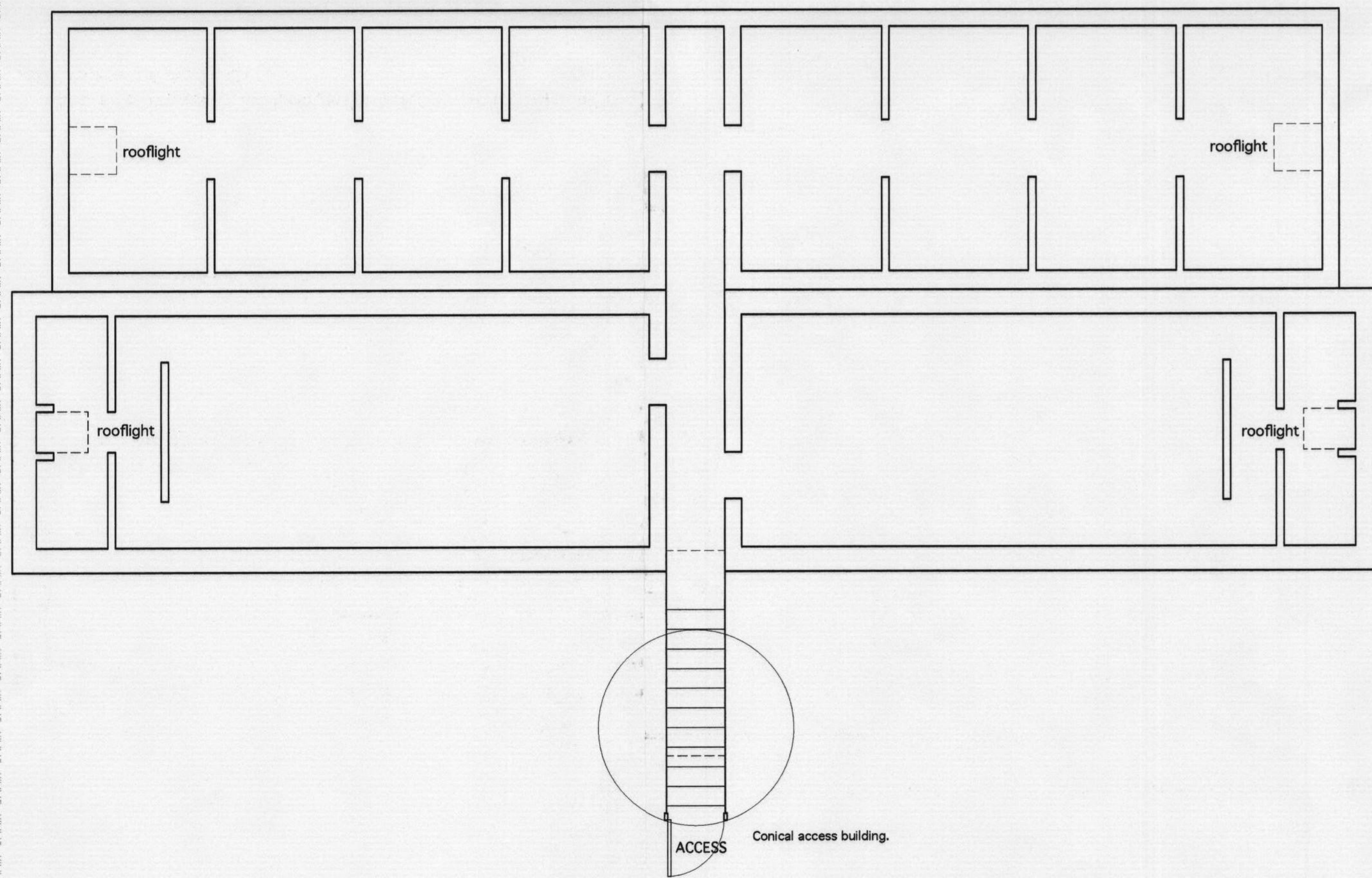
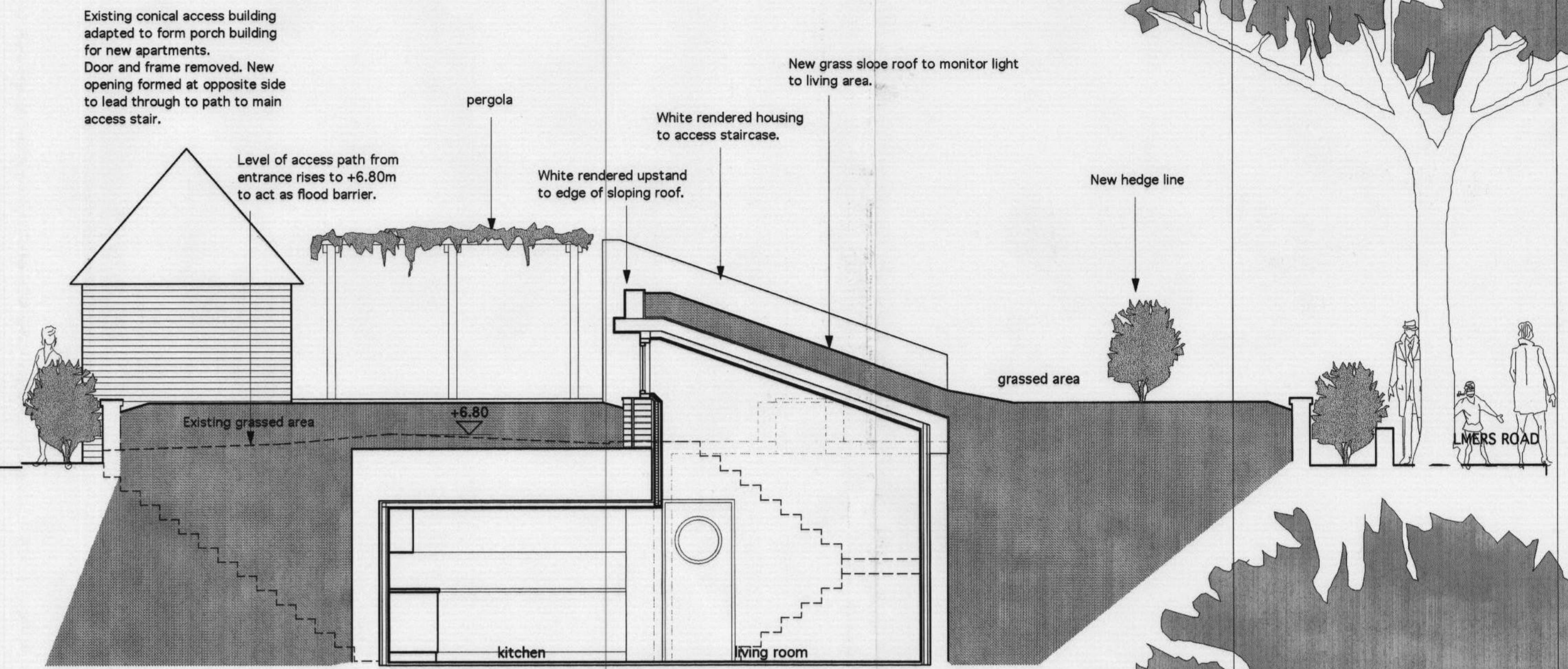


NOTE:
Drainage connections to be run to sump with pumped connection to high level manhole.

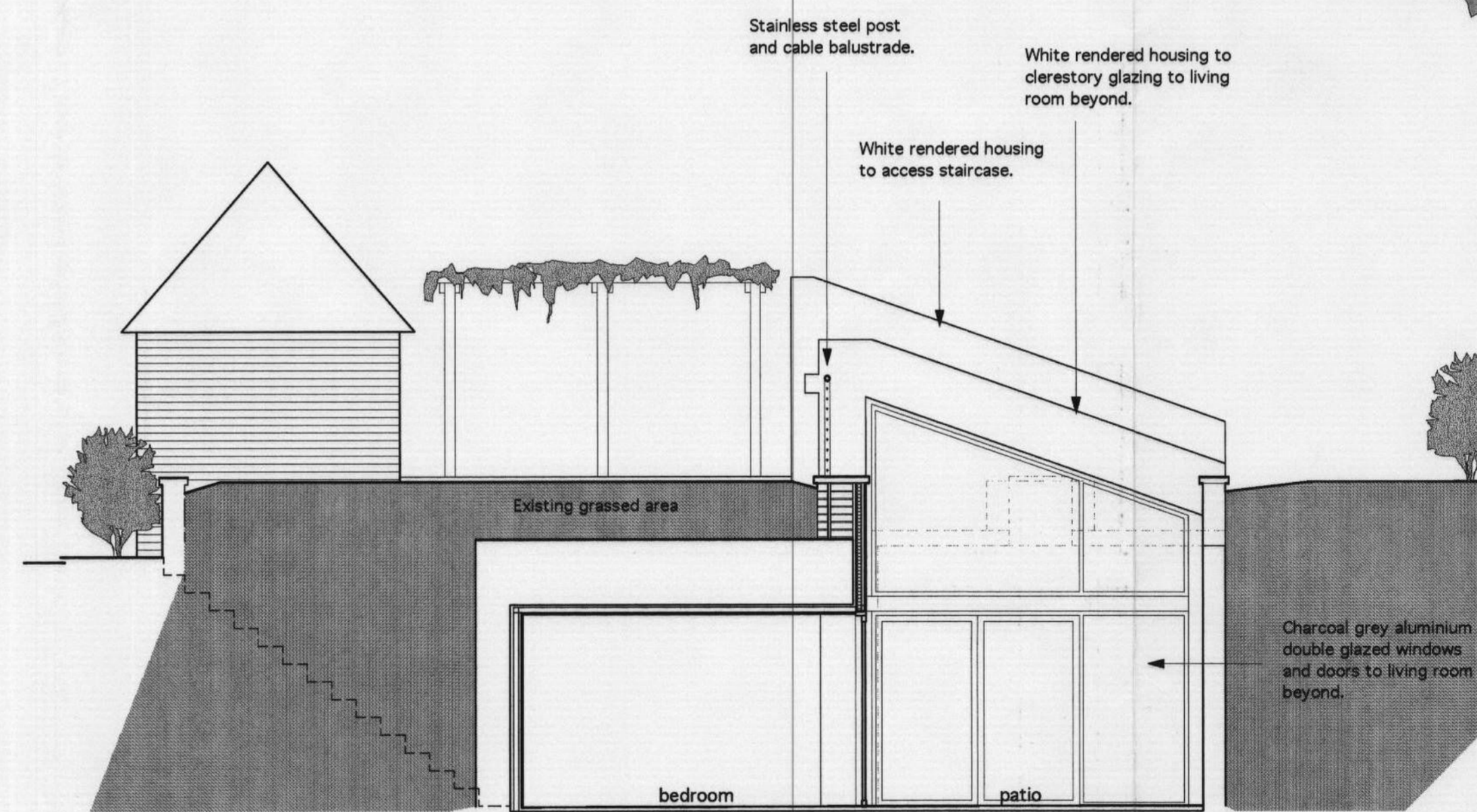
PLAN OF PROPOSED CONVERSION OF SHELTER INTO 2 ONE BEDROOMED APARTMENTS
BASEMENT LEVEL PLAN.



EXISTING AIR RAID SHELTER.
BASEMENT LEVEL PLAN.



SECTION A - A THROUGH PROPOSED LIVING ROOM AND KITCHEN AREAS.



SECTION B - B THROUGH PROPOSED BEDROOM AND OPEN PATIO AREAS.

MATERIALS:
White rendered housings to stair access and to clerestory lighting with charcoal grey aluminium framed double glazed windows and doors.
Top section of roof to stair housing to be finished in copper green Sarna polymeric membrane and the lower section to be planted.
Roofs to clerestories to be grassed.
Balustrade at South side of patio edge to be in satin stainless steel posts and cables.

Do not scale from this drawing.
All dimensions to be checked on site before work commences.
Copyright reserved.

A. February 2007.
High point of entrance path indicated.
Drainage note added.

LIPINSKI PATES
CHARTERED ARCHITECTS

68a, Kelmscott Road, London SW11 6PT.
Tel: 020 7738 9127.
Fax: 020 7738 9128.
e-mail: lpa@lipinskিপates.co.uk

ST. LEONARD'S COURT
EAST SHEEN, LONDON SW14
PROPOSAL TO REFURBISH EXISTING
AIR RAID SHELTER
TO FORM TWO APARTMENTS

BASEMENT LEVEL PLANS
PROPOSED CROSS SECTIONS

Scale: 1:50 @ A1, 1:100 @ A3
Date: June 2006.

06/697/05A

