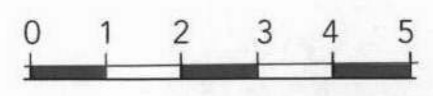
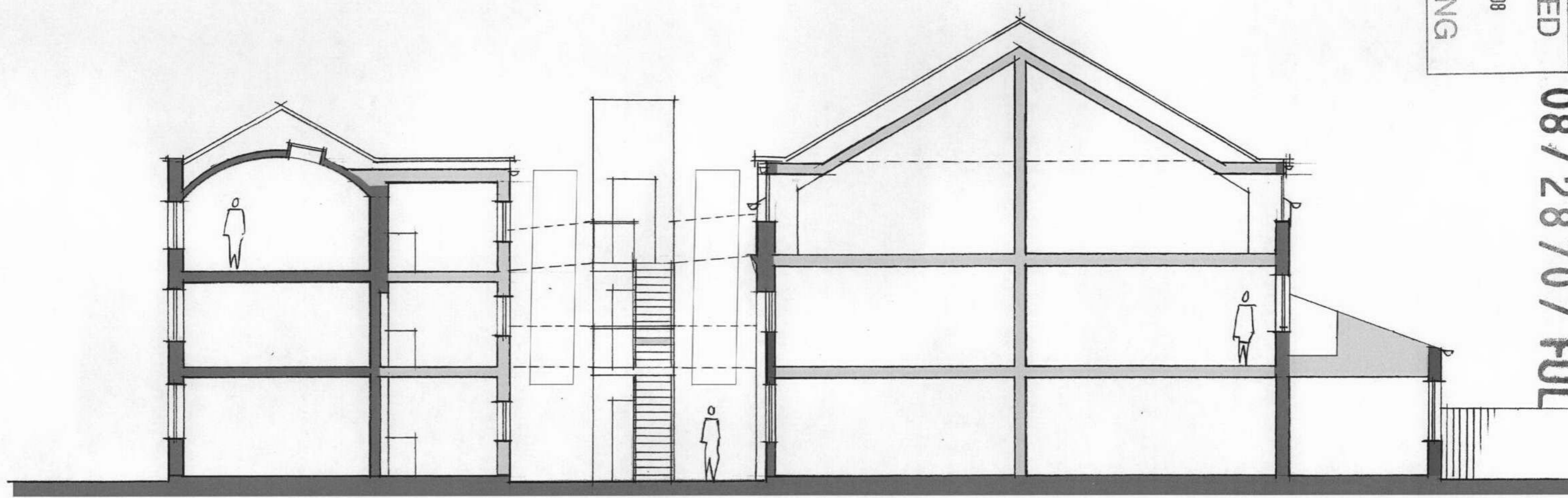


RECEIVED
26 AUG 2008
PLANNING

08/2870/FUL



EXISTING
NEW

TYPICAL SECTION LOOKING WEST AS PROPOSED

PL121

37 HAMILTON ROAD TWICKENHAM 3903
PLANNING APPLICATION scale 1:100
August 2008

ACANTHUS LW
ARCHITECTS

Voyssey House, Barley Mow Passage, London W4 4PN
020 8994 2288 + 020 8747 9001 www.acanthuslw.com