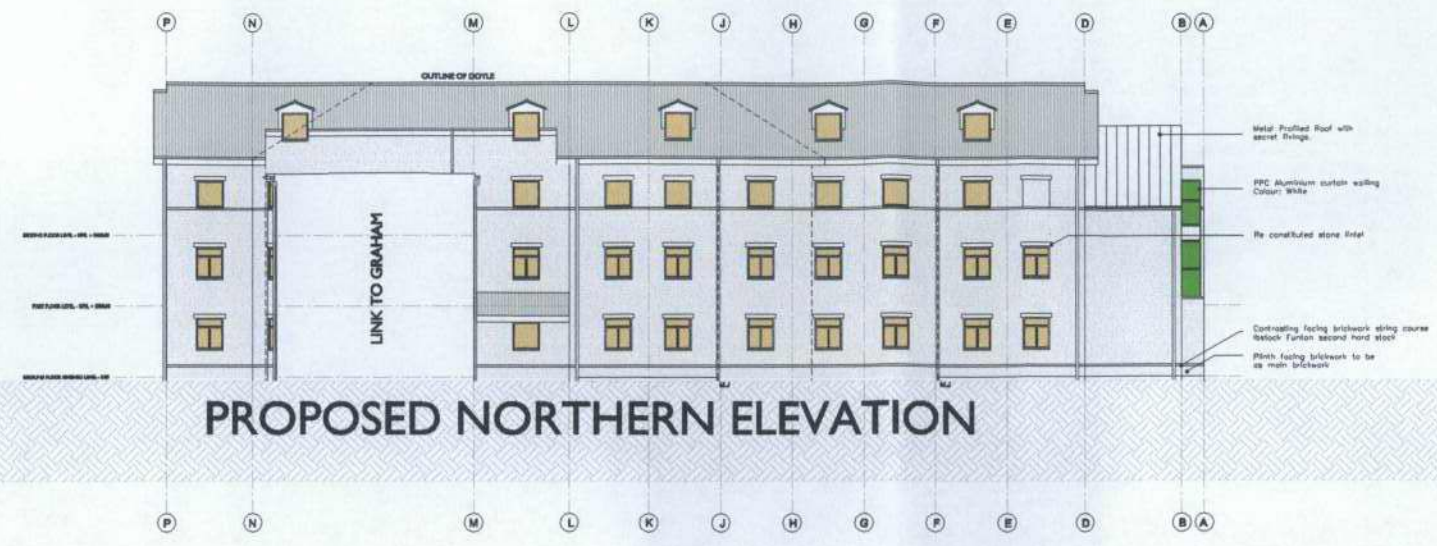


© ASH DESIGN CONSULTANTS LTD
 All rights reserved. No part of this drawing may be reproduced, stored in a retrieval system, or transmitted in any form or by any means, electronic, mechanical, photocopying, recording, or by any information storage and retrieval system, without the prior written permission of Ash Design Consultants Ltd.

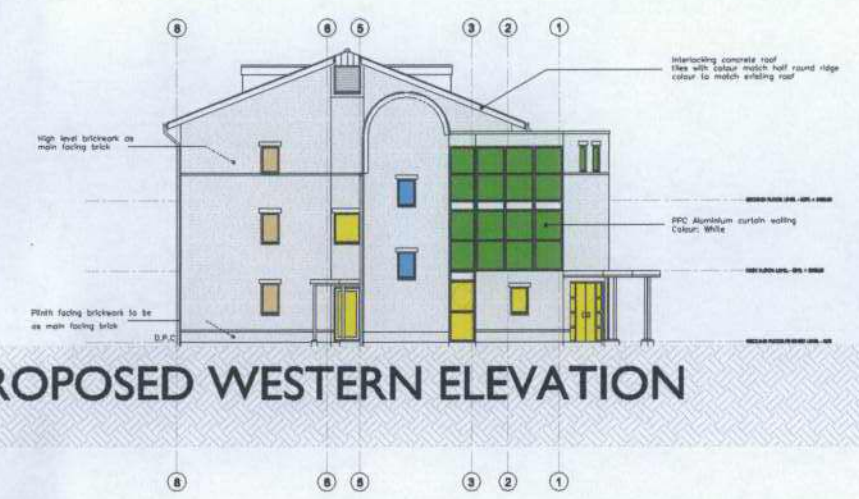
Rev	Date	By	Amendment
A			Penetration amended Brickwork related to single brick with concrete future wing course Low level roof amended to concrete tile as main roof North window amended Reconstituted stone block added Elevation amended to suit floor plan alignment at western end of north wing
B			Roof dormer windows added
C			Further roof dormer windows added



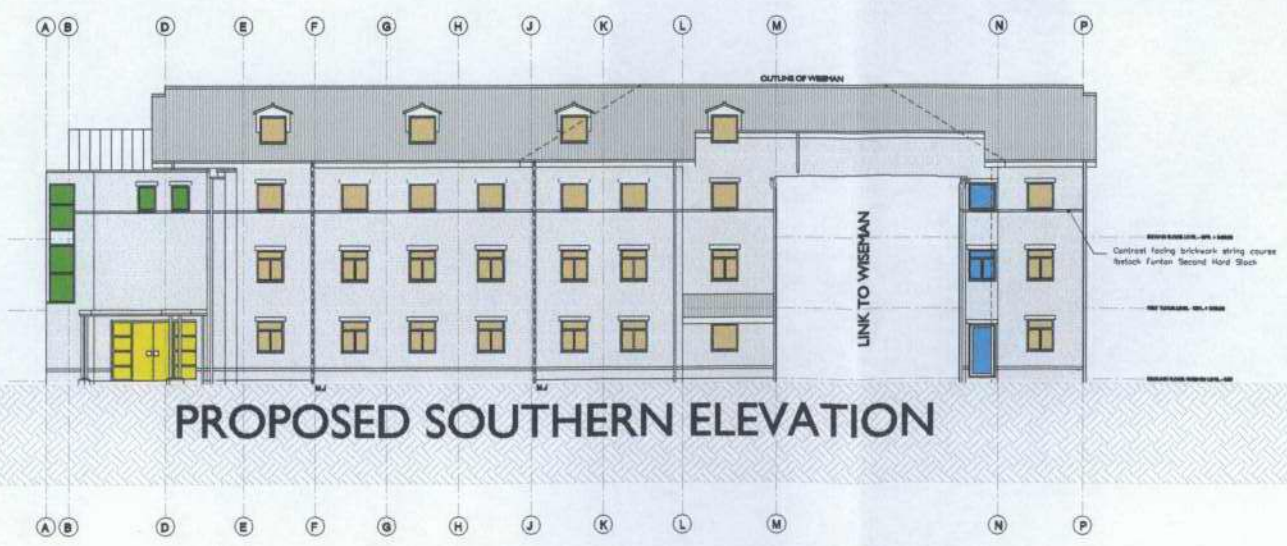
PROPOSED NORTHERN ELEVATION



PROPOSED EASTERN ELEVATION



PROPOSED WESTERN ELEVATION



PROPOSED SOUTHERN ELEVATION

Note:
 Apron/Cover flashing omitted for clarity, see detail drawings

LEGEND

- STUDENT ROOM WINDOWS
- KITCHEN AND COMMON ROOM WINDOWS
- STAIRCASE WINDOWS
- CIRCULATION AND OTHER WINDOWS



ASH DESIGN
 CONSULTANTS LTD

LONDON
 100 BROADWAY, 10TH FLOOR, LONDON, EC4A 3DF
 Tel: 020 7323 2170 Fax: 020 7323 2171
 Email: ash@ashdesign.co.uk Website: www.ashdesign.co.uk

2005/04
 1, 2, 3, 4, 5, 6, 7, 8, 9, 10, 11, 12, 13, 14, 15, 16, 17, 18, 19, 20, 21, 22, 23, 24, 25, 26, 27, 28, 29, 30, 31, 32, 33, 34, 35, 36, 37, 38, 39, 40, 41, 42, 43, 44, 45, 46, 47, 48, 49, 50, 51, 52, 53, 54, 55, 56, 57, 58, 59, 60, 61, 62, 63, 64, 65, 66, 67, 68, 69, 70, 71, 72, 73, 74, 75, 76, 77, 78, 79, 80, 81, 82, 83, 84, 85, 86, 87, 88, 89, 90, 91, 92, 93, 94, 95, 96, 97, 98, 99, 100

Client	St. MARY'S COLLEGE TWICKENHAM		
Project	EXTENSIONS AND ALTERATIONS TO GWD ACCOMMODATION		
Drawn	ELEVATION NORTH WING		
Date	06/03/03	Scale	1/100
Drawn by	JB	Checked by	