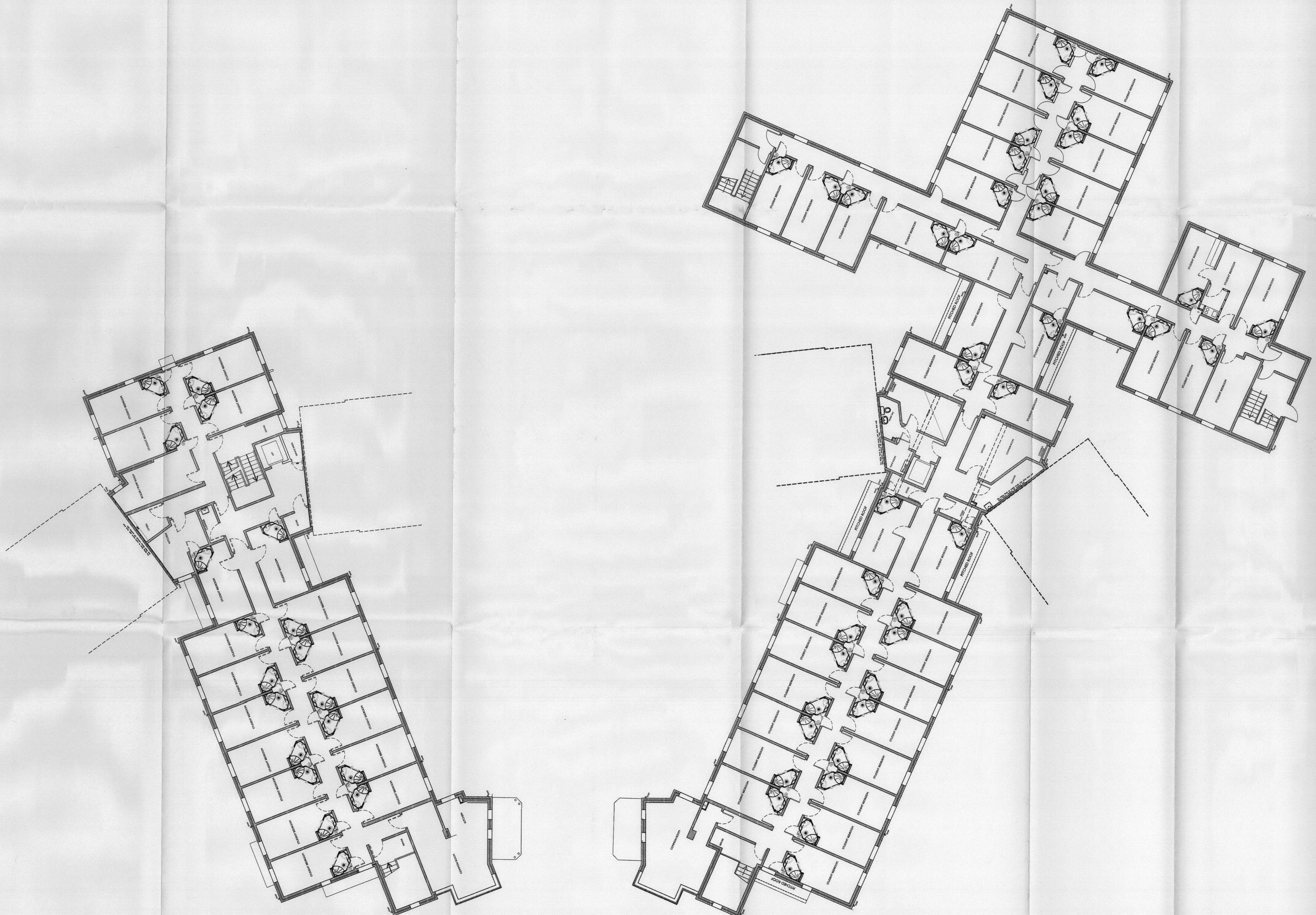


© ASH DESIGN CONSULTANTS LTD
 No part of this drawing may be reproduced without written consent. Do not make from this drawing. All contractors must visit site and be responsible for taking and checking all dimensions relating to this work.

ASH DESIGN CONSULTANTS LTD
 A member of Triba Group plc
 ISO 9001 REGISTERED FIRM

Rev	Date	By	Amendment
A	13/06/03	A.C.	PLAN LAYOUTS ALTERED TO FIT PLANNING RECOMMENDATIONS. CHANGE OVER MAIN ENTRANCES CHANGED



LEGEND

03/1855/
 FULL

LONDON OFFICE
 100, MARK LANE
 EC3A 7PU
 PLANNING

ASH DESIGN
 CHARTERED ARCHITECTS

RIVERSIDE OFFICES, BLOCK A, LITTLEBROOK BUSINESS PARK, DARTFORD, KENT DA1 3PE
 Tel: 01322 627800 E-mail: ash@tribaPS.co.uk
 Fax: 01322 200155 Website: www.TribaPS.co.uk

SUITE 1, GRANTON GRANGE OFFICES, SHERBURN ROAD, TADCASTER, NORTH YORKSHIRE, LS24 8BK
 Tel: 01537 833975 E-mail: tsain@tribaPS.co.uk
 Fax: 01537 833512 Website: www.TribaPS.co.uk

Client
 St. MARY'S COLLEGE
 TWICKENHAM

Project
 EXTENSIONS AND ALTERATIONS
 TO GYM ACCOMMODATION

Drawing
 PROPOSED
 SECOND FLOOR PLAN

Date	Scale	Drawn	By
11/02/03	1/100	JB	
		Checked	By