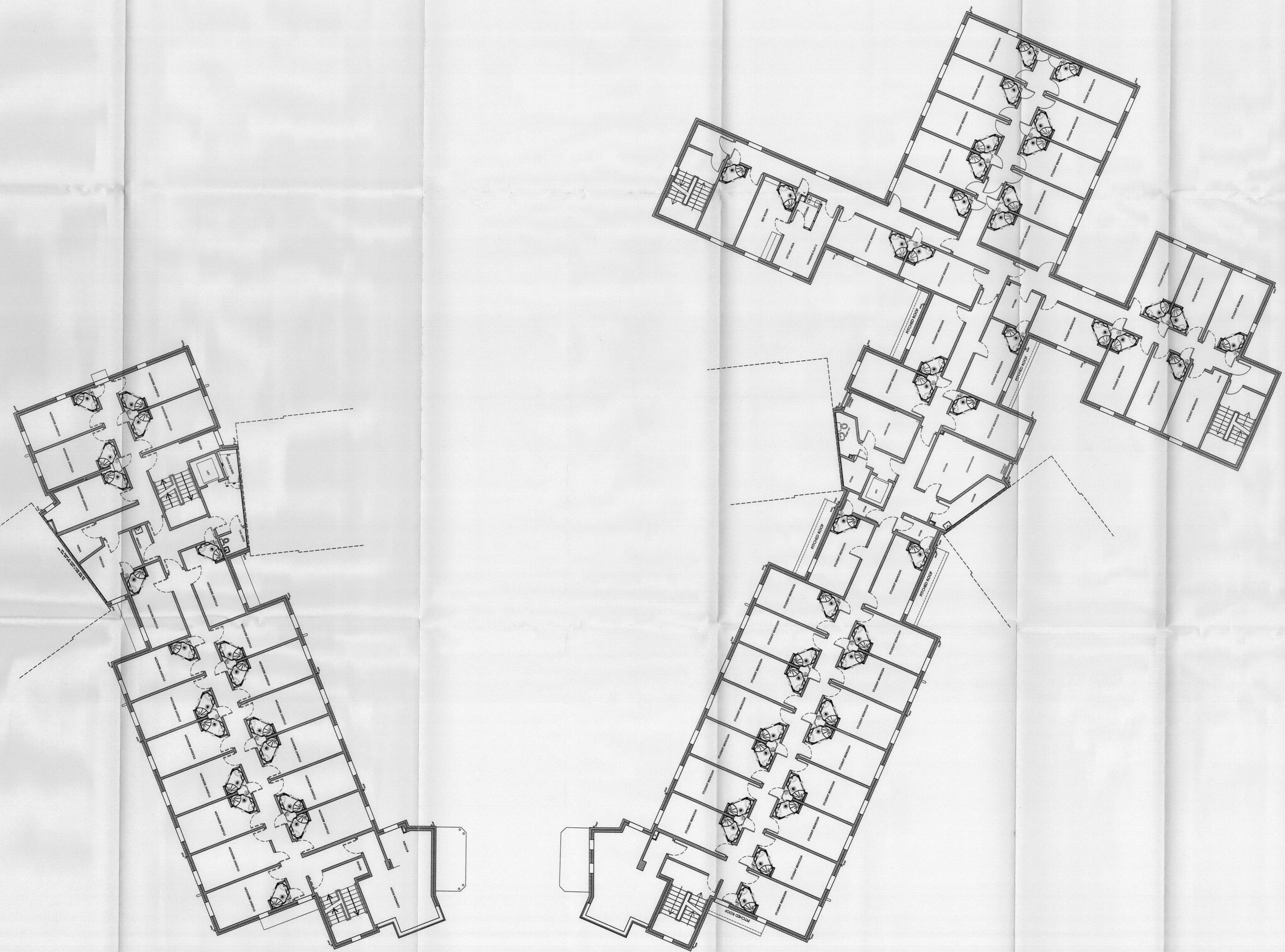


Project No	Drawing No	Revision
02644	L(0)11	A

© ASH DESIGN CONSULTANTS LTD
 No part of this drawing may be reproduced without
 written consent. Do not make from this drawing.
 All contractors must visit site and be responsible
 for taking and checking all dimensions relating
 to this work.

Rev	Date	By	Amendment
A	13/06/03	A.C.	PLAN LAYOUTS ALTERED TO FIT PLANNING RECOMMENDATIONS. CANOPIES OVER MAIN ENTRANCES CHANGED



LEGEND

03/1655/
FUL

LONDON BOROUGH OF
RICHMOND UPON
16 JUN 2003
PLANNING

ASH DESIGN
 CHARTERED ARCHITECTS

■ RIVERSIDE OFFICES, BLOCK A, LITTLEBROOK BUSINESS
 PARK, DARTFORD, KENT DA1 8PE
 Tel: 01322 837800 E-mail: ash@tribalps.co.uk
 Fax: 01322 290155 Website: www.TribalPS.co.uk

□ SUITE 1, GRIMSTON GRANGE OFFICES, SHERBURN ROAD,
 TAGGASTER, NORTH YORKSHIRE, LEAS 8BA
 Tel: 01937 833975 E-mail: ash@tribalps.co.uk
 Fax: 01937 833512 Website: www.TribalPS.co.uk

Client
**St. MARY'S COLLEGE
 TWICKENHAM**

Project
**EXTENSIONS AND ALTERATIONS
 TO GWD ACCOMMODATION**

Drawn
**PROPOSED
 FIRST FLOOR PLAN**

Date
 11/02/03

Scale
 1/100

Drawn by
 JB

Checked by

Project No	Drawing No	Revision
02644	L(0)11	A