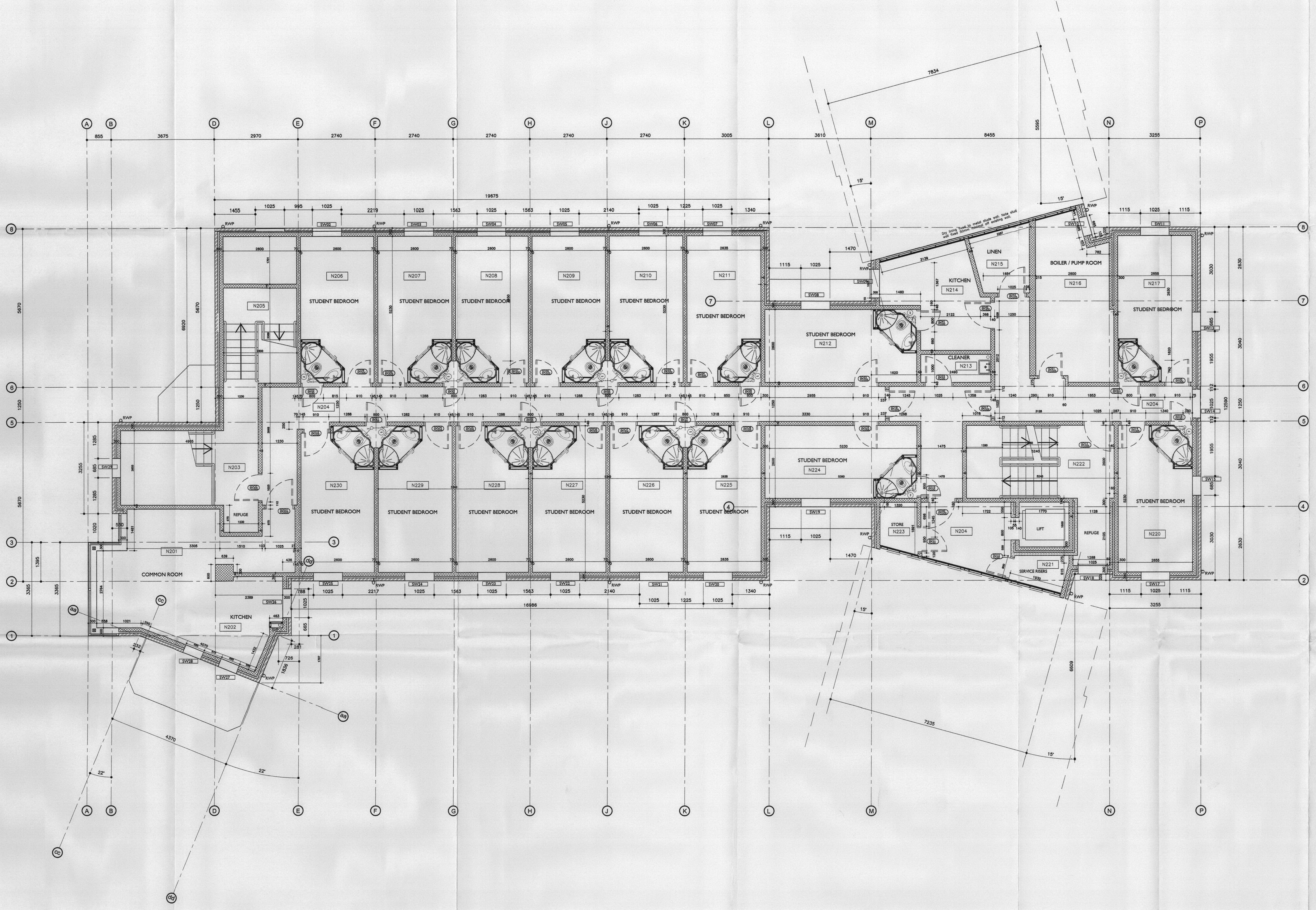


03. 1355 / FUL

- A. 18/06/03 vs Rooms N218 and N219 omitted
- B. 10/07/03 mh Structural steel added to building as request by structural Eng.
Room no N224 / N212 door sizes corrected to 910 size
- C. 31/07/03 ja Replaced student bedroom N205 with new staircase to access new third floor.
Removed windows SW31 / SW30 and SW11 to accommodate new staircase.
Removed door S223 and moved door SD02 to accommodate new staircase and escape corridor.
Refuge was revised as per South Wing.
Reassigned windows to disabled student rooms to suite elevation line from new third floor (Room N212 / N224).

Environment	Initial	Final	State
No.			
- 0 AUG 2003			
1			
2			
3			
4			
5			
6			
7			



LEGEND

BRICK & BLOCK WORK WALL LEGEND

- FAIR FACE BRICK WORK WALL
- 140 MM BLOCK WORK WALL
- 100 MM BLOCK WORK WALL

OFFICE COPY
DO NOT REMOVE FROM FILE

TRIBAL
property services
A member of Tribal Group PLC

ASH DESIGN
CHARTERED ARCHITECTS

■ LONDON
 RIVERVIEW OFFICES, BLOCK A, LITTLEBROOK BUSINESS PARK,
 DARTFORD, KENT DA11 0PZ
 Tel: 01322 237000 E-mail: ash@tribalpb.co.uk
 Fax: 01322 236155 Website: www.tribalpb.co.uk

BRISTOL
 1 PORTLAND SQUARE,
 BRISTOL, BS2 0BP
 Tel: 0117 311 8888
 Fax: 0117 311 9422

LEEDS
 SUITE 1, GRIMSTON SQUARE OFFICES,
 SHERBURN ROAD, TADCASTER, LEEDS LS9 4BX
 Tel: 0117 311 8888
 Fax: 0117 311 9422

Client: St. MARY'S COLLEGE TWICKENHAM

Project: EXTENSIONS AND ALTERATIONS TO GWD ACCOMMODATION

Drawing: SECOND FLOOR PLAN NORTH WING

Date: 06/03/03 Scale: 1/50 Drawn by: JB
 Checked by: