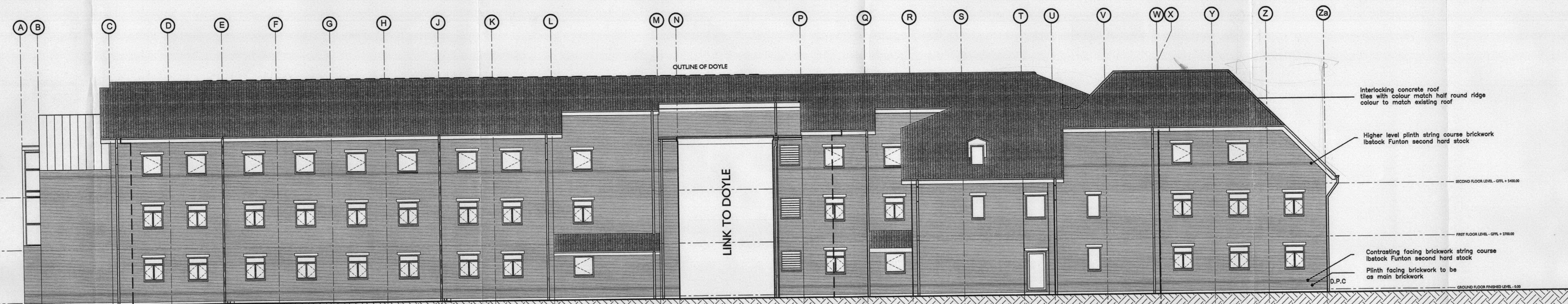


03/1855/FUL

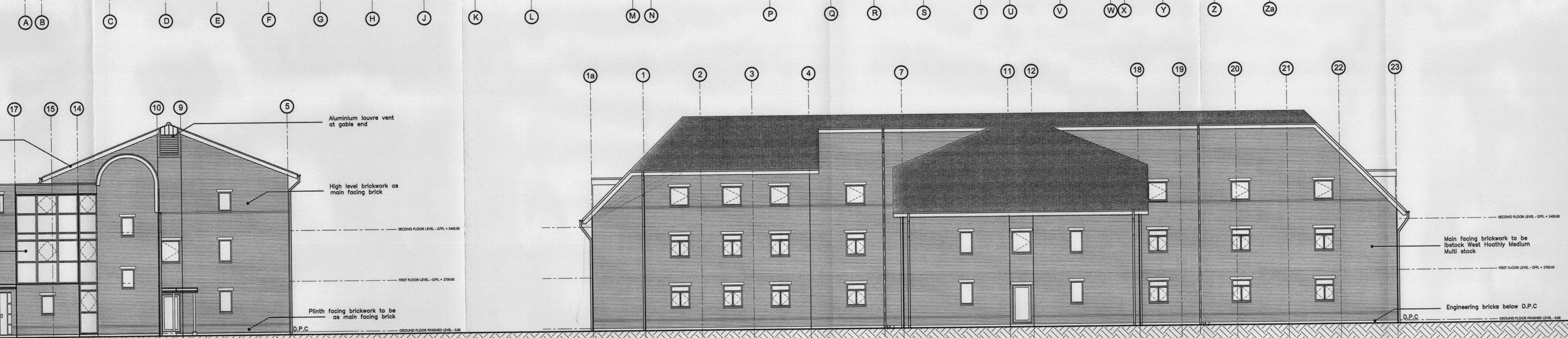
Rev	Date	By	Amendment
B.	15/07/03	mb	East elevation, right hand window grid was door. Corrected to window as shown

Note:- Apron/Cover flashing omitted for clarity, see detail drawings

Environment	City	Professional Title	Date
No			
- 8 AUG 2003			

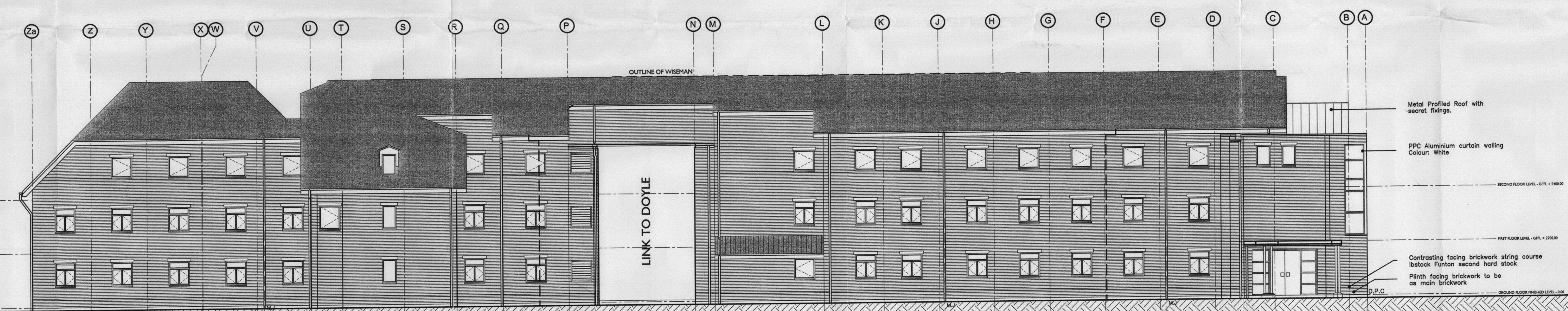


PROPOSED SOUTHERN ELEVATION



PROPOSED WESTERN ELEVATION

PROPOSED EASTERN ELEVATION



PROPOSED NORTHERN ELEVATION

LEGEND

OFFICE COPY
DO NOT REMOVE FROM FILE

TRIBAL
PROPERTY SERVICES
A member of Tribal Group PLC

ASH DESIGN
CHARTERED ARCHITECTS
LONDON
RIVERSIDE OFFICES, BLOCK A, LITTLEBROOK BUSINESS PARK,
DARTFORD, KENT DA1 0PE
Tel: 01322 621700 E-mail: ash@tribaldesign.co.uk
Fax: 01322 290155 Website: www.tribaldesign.co.uk
BRISTOL
1 PORTLAND SQUARE, BRISTOL, BS2 0BR
Tel: 0117 317 5400 Fax: 0117 317 5422
LEEDS
SUITE 1, GRIMSTON ORANGE OFFICES,
SHERBURN ROAD, TADCASTER, LE24 6EX
Tel: 01937 838877 Fax: 01937 838812

Client St. MARY'S COLLEGE TWICKENHAM			
Project EXTENSIONS AND ALTERATIONS TO GWD ACCOMMODATION			
Drawing SOUTH WING ELEVATION			
Date 04/04/03	Scale 1/100	Drawn by JB	Checked by
Project No 02644	Drawing No L(2)8	Revision	