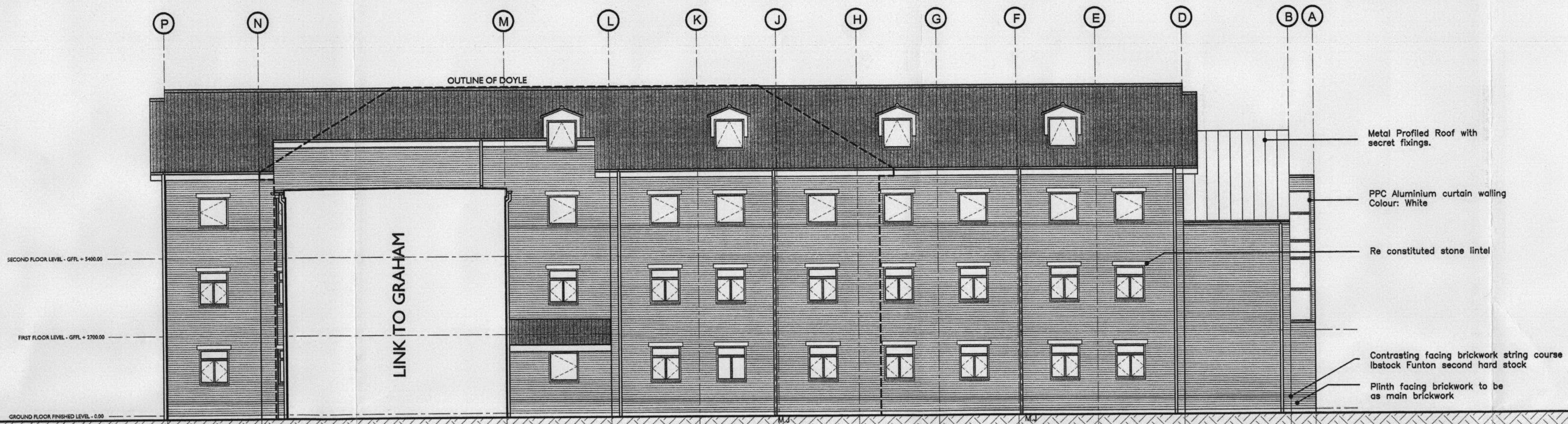


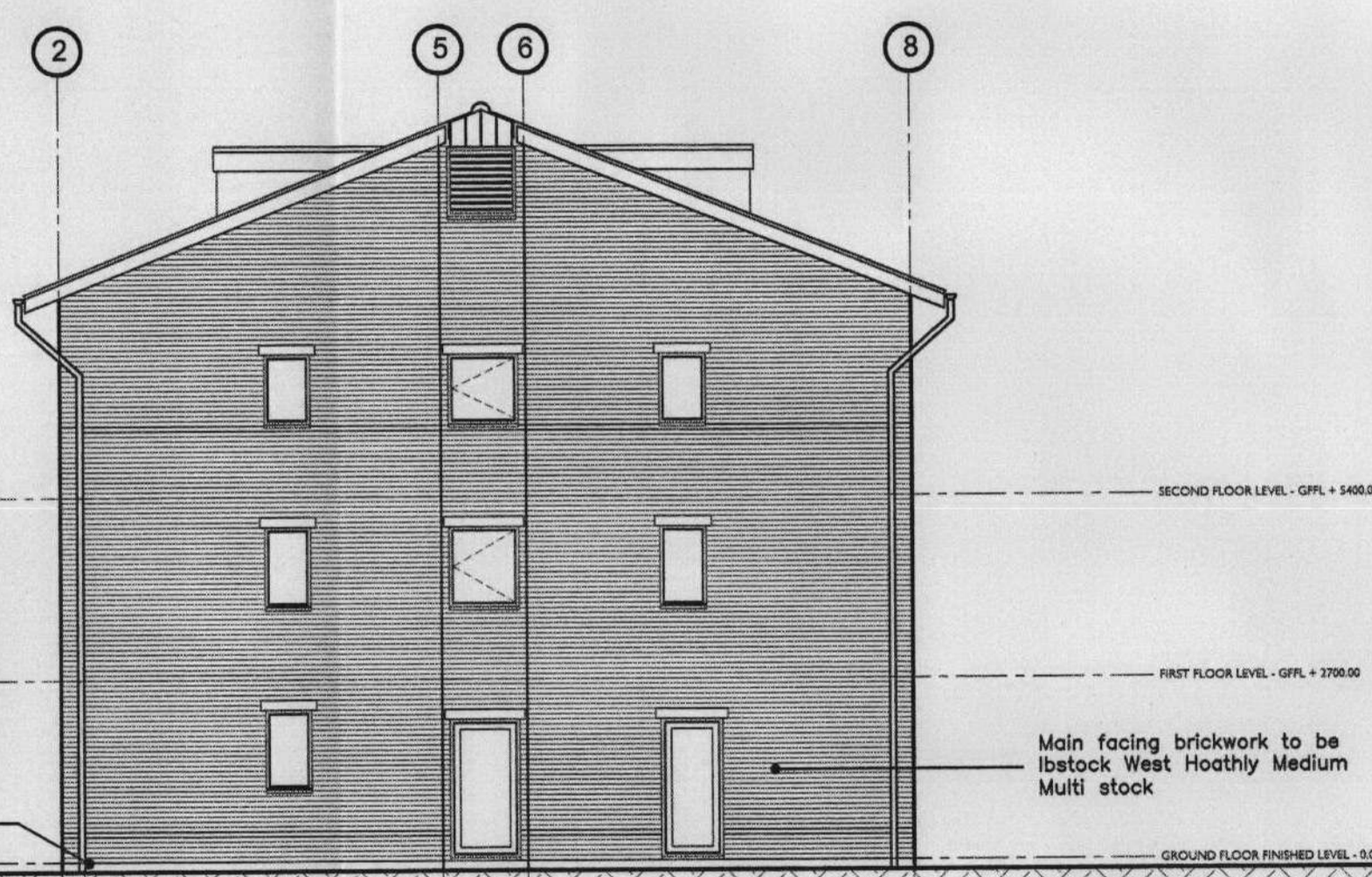
03/1855/Ful

Revision amended.
 Brickwork reduced to single brick with contrast
 feature string courses.
 Low level roof amended to concrete tile as main
 roof.
 Porch canopies amended.
 Re-constituted stone lintels added.
 Elevations amended to suit floor plan adjustments
 at eastern end of north wing.

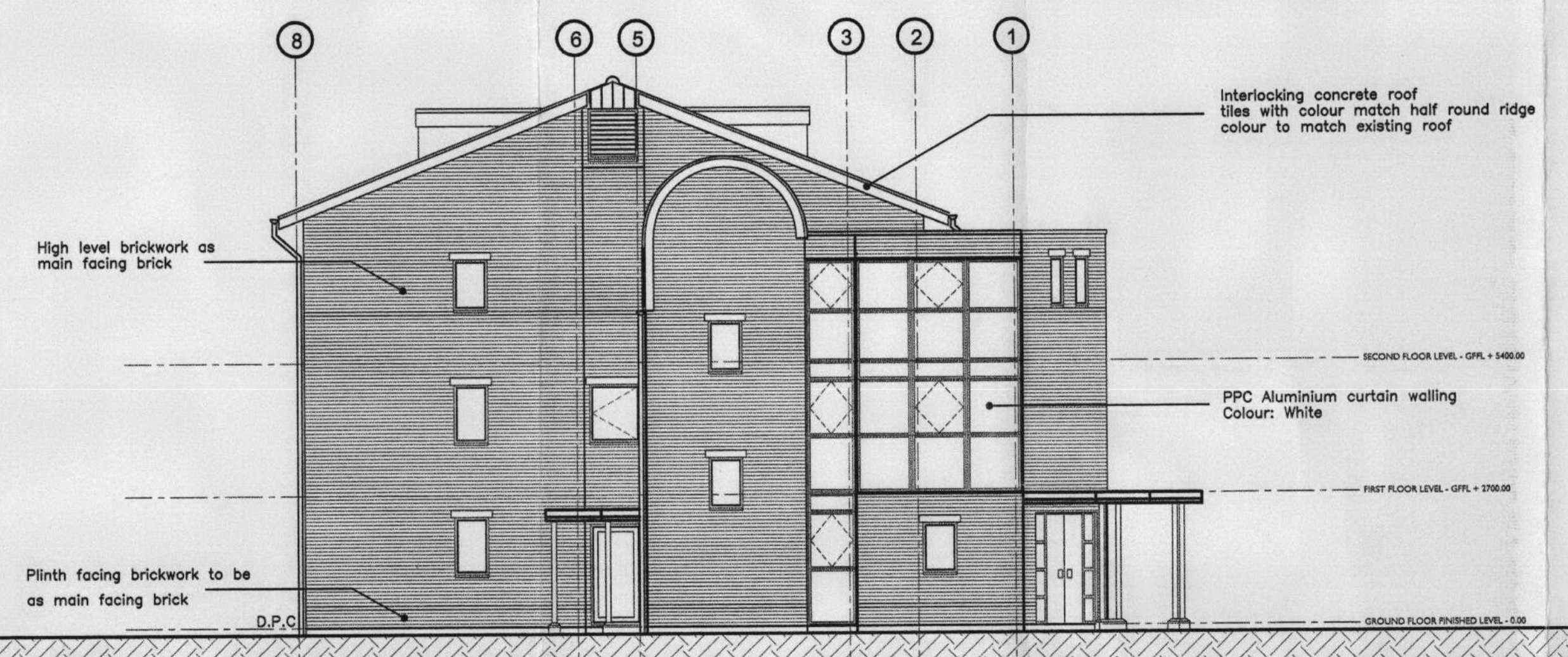
Revision	By	Date	Description
1			
2			
3			
4			
5			
6			
7			
8			
9			
10			



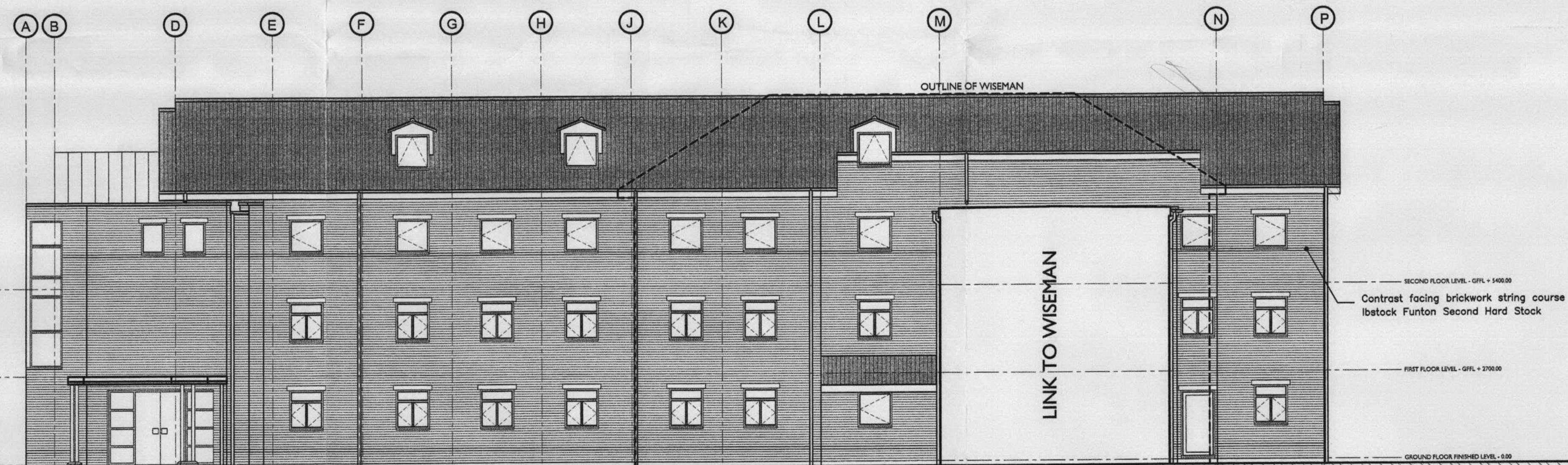
PROPOSED NORTHERN ELEVATION



PROPOSED EASTERN ELEVATION



PROPOSED WESTERN ELEVATION



PROPOSED SOUTHERN ELEVATION

Note:-
 Apron/Cover flashing omitted for clarity, see
 detail drawings

LEGEND

OFFICE COPY
 DO NOT REMOVE FROM FILE

TRIBAL
 property services
 A member of Tribal Group PLC

ASH DESIGN
 CHARTERED ARCHITECTS
 RIVERSIDE OFFICES, BLOCK A, LITTLEBROOK BUSINESS PARK,
 DARTFORD, KENT DA1 5PZ
 Tel: 01322 827500 Email: ash@tribaldps.co.uk
 Fax: 01322 269105 Website: www.tribaldps.co.uk
 BRISTOL PORTLAND SQUARE, LEBDS
 BRISTOL BS2 8PR, SHREBURN ROAD, TADCASTER, LE14 9BX
 Tel: 0117 311440 Tel: 0153 62288
 Fax: 0117 311442 Fax: 0153 62292

Client: St. MARY'S COLLEGE TWICKENHAM
 Project: EXTENSIONS AND ALTERATIONS TO GWD ACCOMMODATION
 Drawing: ELEVATION NORTH WING
 Date: 06/03/03 Scale: 1/100 Drawn by: JB
 Checked by:

Project No: 02644 Drawing No: L(2)7 Revision: JB