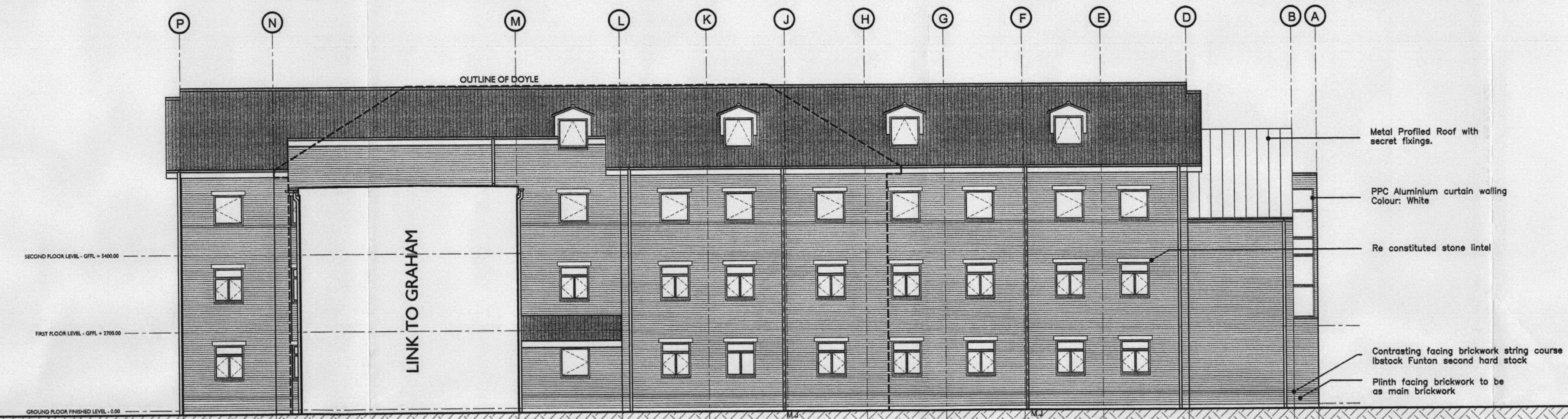


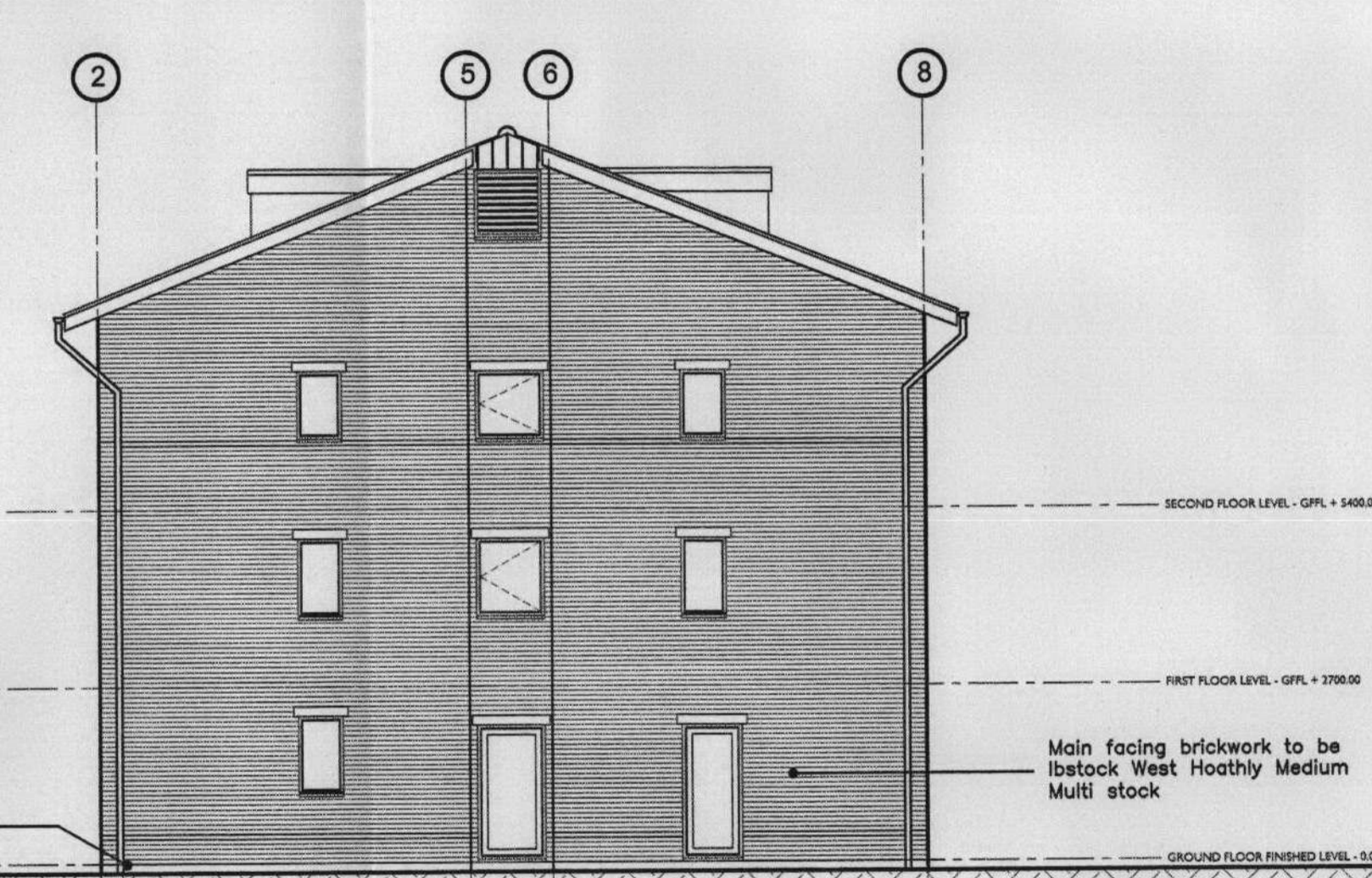
03/1855/Ful

Revision amended.
 Brickwork reduced to single brick with contrast
 feature string courses.
 Low level roof amended to concrete tile as main
 roof.
 Porch canopies amended.
 Re-constituted stone lintels added.
 Elevations amended to suit floor plan adjustments
 at eastern end of north wing.

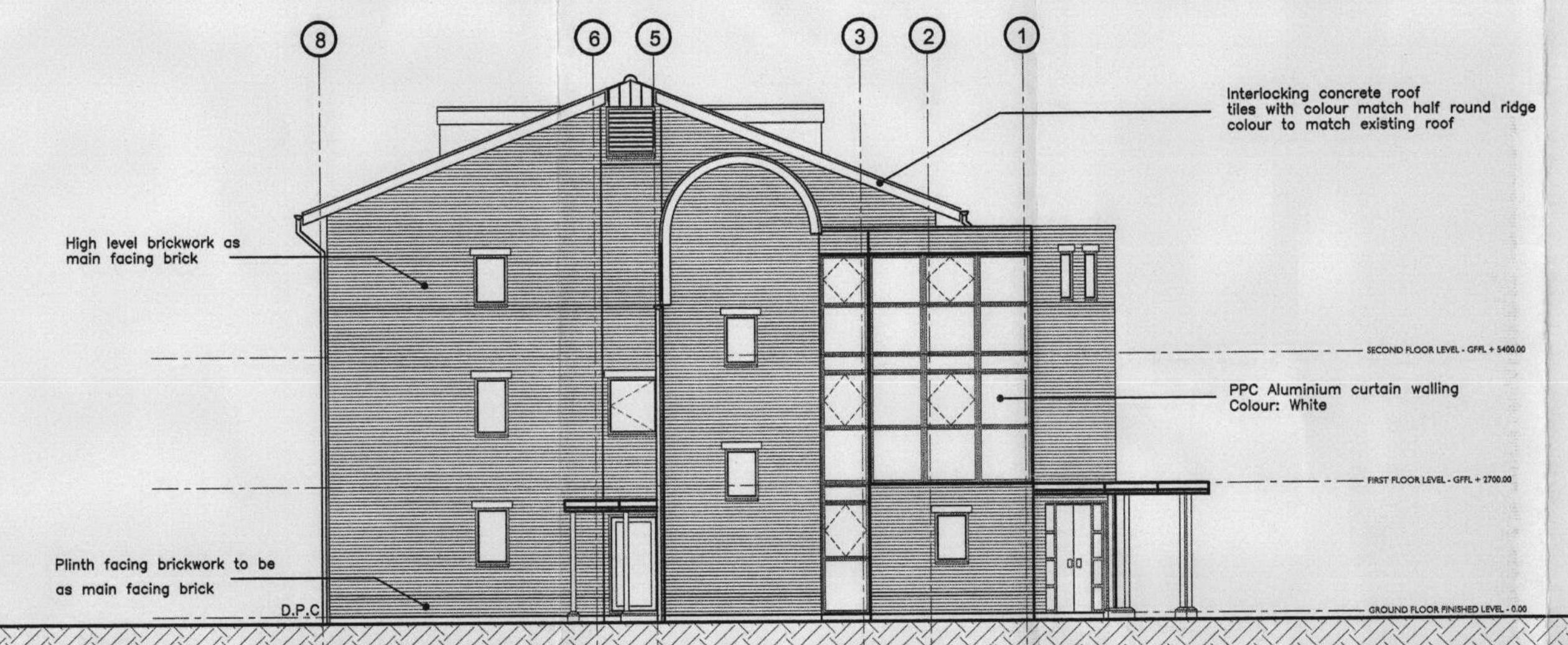
| Revision | Cl. | Date | Drawn by |
|----------|-----|---------|----------|
| 1 | | 03/1855 | |



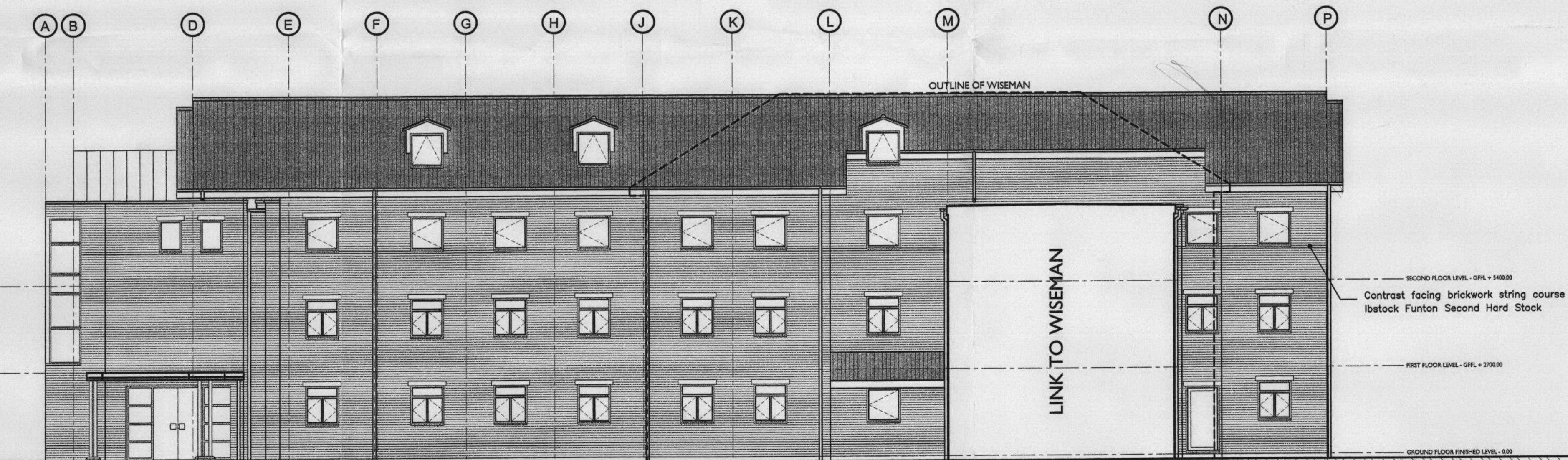
PROPOSED NORTHERN ELEVATION



PROPOSED EASTERN ELEVATION



PROPOSED WESTERN ELEVATION



PROPOSED SOUTHERN ELEVATION

Note:-
 Apron/Cover flashing omitted for clarity, see detail drawings

LEGEND

OFFICE COPY
 DO NOT REMOVE FROM FILE

TRIBAL
 property services
 A member of Tribal Group PLC

ASH DESIGN
 CHARTERED ARCHITECTS

RIVERSIDE OFFICES, BLOCK A, LITTLEBROOK BUSINESS PARK,
 DARTFORD, KENT DA1 5PZ
 Tel: 01322 827500 Fax: 01322 269105 Email: ash@tribaldps.co.uk Website: www.tribaldps.co.uk

BRISTOL
 PORTLAND SQUARE,
 BRISTOL BS2 8PR
 Tel: 0117 311440 Fax: 0117 311442

LEEDS
 SCITE 5 GRIMSTON ORANGE OFFICES,
 SHEPHERDSON ROAD, TADCASTER, LS24 9BX
 Tel: 01937 533333 Fax: 01937 533312

Client: St. MARY'S COLLEGE TWICKENHAM

Project: EXTENSIONS AND ALTERATIONS TO GWD ACCOMMODATION

Drawn: ELEVATION NORTH WING

Date: 06/03/03 Scale: 1/100 Drawn by: JB

Project No: 02644 Drawing No: L(2)7 Revision: JB