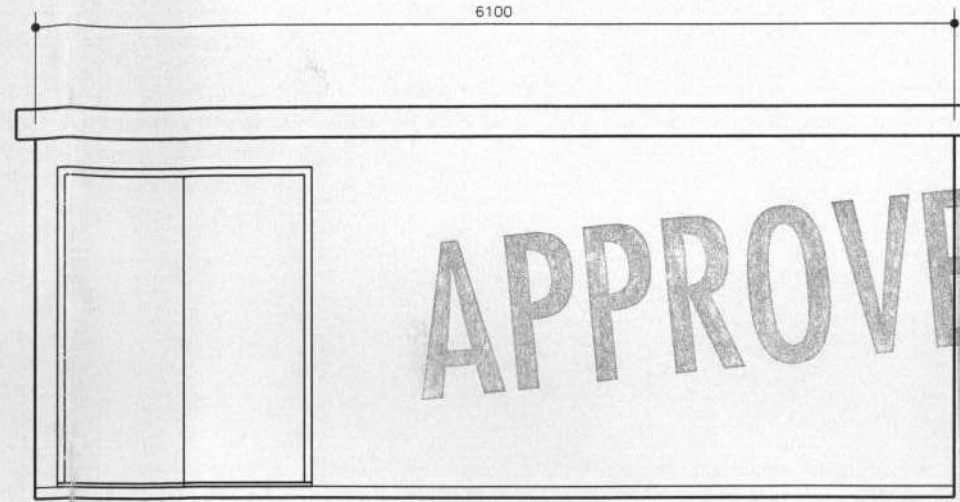
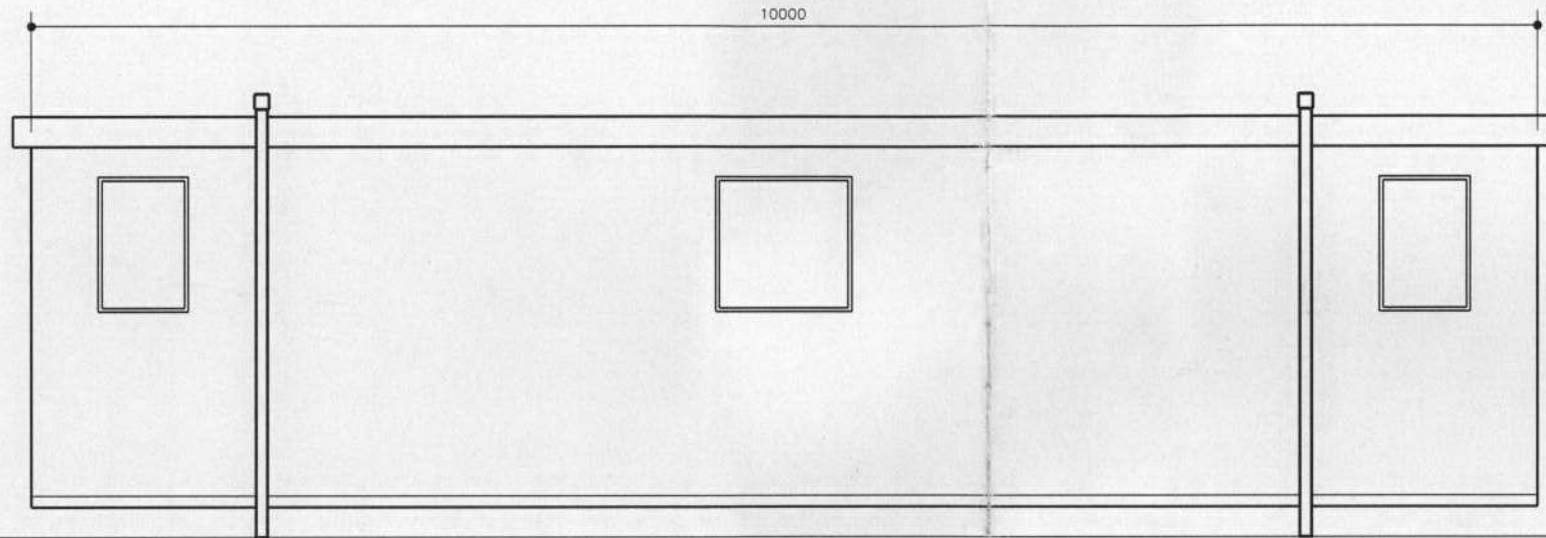


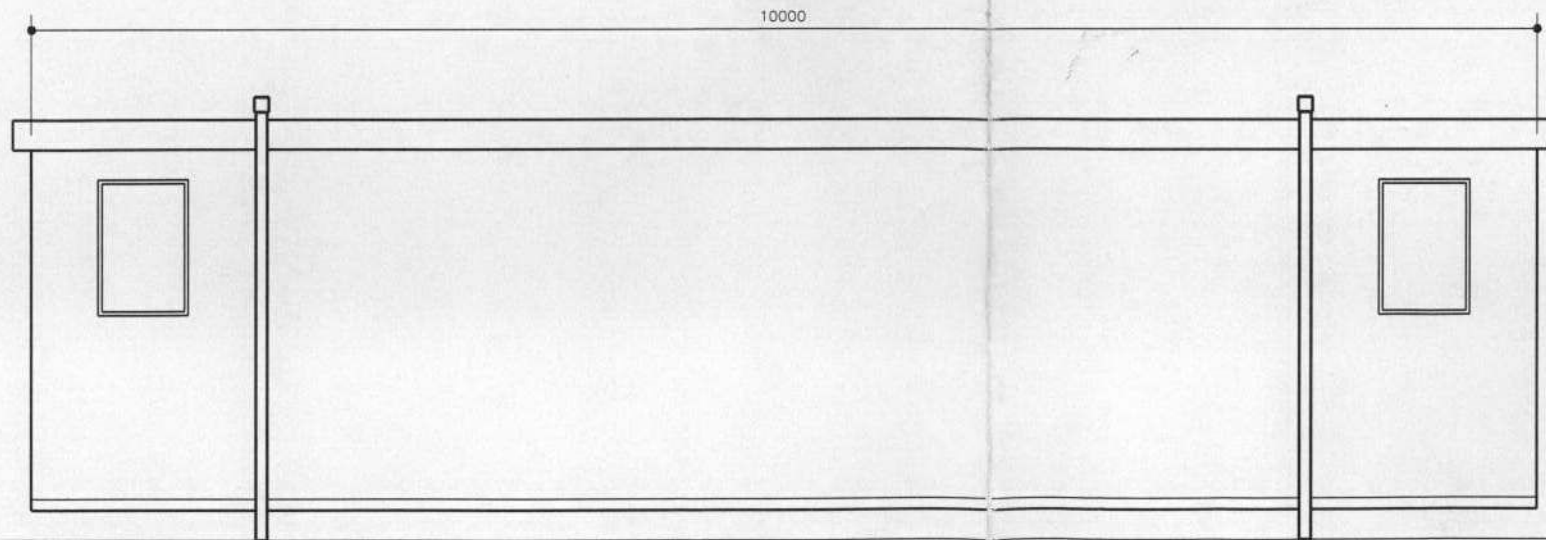
END ELEVATION 1



END ELEVATION 2



SIDE ELEVATION 1



SIDE ELEVATION 2

**APPROVED**

Project No	Drawing No	Revision
03732	L(0)01	

ASH DESIGN CONSULTANTS LTD  
 Registered office: 100 Queen Victoria Street, London, EC4V 4DQ  
 Company registered in England and Wales No. 472880  
 No part of this drawing may be reproduced without written consent  
 All contractors must read and be responsible for taking and  
 checking all dimensions relating to this work.  
 Do not scale from this drawing.



Rev	Date	By	Amendment

Environmental Protection and  
Customer Services

Refer to:

Copies to:

- 7 NOV 2003

HCSS

VIP

03/2802/FUL

**OFF**  
DO NOT REMOVE FROM FILE

LEGEND

TRIBAL  
property services  
A member of Tribal Group PLC

**ASH DESIGN**  
CHARTERED ARCHITECTS

■ LONDON  
RIVERSIDE OFFICES, BLOCK A, LITTLEBROOK BUSINESS PARK,  
DARTFORD, KENT DA1 5PZ  
Tel: 01322 827800 E-mail: ash@tribalps.co.uk  
Fax: 01322 290155 Website: www.tribalps.co.uk

BRISTOL  
1 PORTLAND SQUARE,  
BRISTOL BS2 8PR  
Tel: 0117 311 6420  
Fax: 0117 311 5422

LEEDS  
SUITE 1, GRIMSTON GRANDE OFFICES,  
SHERBURN ROAD, TADCASTER, LS24 9BX  
Tel: 01937 839975  
Fax: 01937 839970

TRIBAL  
property services  
A member of Tribal Group PLC

**ASH DESIGN**  
CHARTERED ARCHITECTS

■ LONDON  
RIVERSIDE OFFICES, BLOCK A, LITTLEBROOK BUSINESS PARK,  
DARTFORD, KENT DA1 5PZ  
Tel: 01322 827800 E-mail: ash@tribalps.co.uk  
Fax: 01322 290155 Website: www.tribalps.co.uk

BRISTOL  
1 PORTLAND SQUARE,  
BRISTOL BS2 8PR  
Tel: 0117 311 6420  
Fax: 0117 311 5422

LEEDS  
SUITE 1, GRIMSTON GRANDE OFFICES,  
SHERBURN ROAD, TADCASTER, LS24 9BX  
Tel: 01937 839975  
Fax: 01937 839970

Client	St MARY'S COLLEGE TWICKENHAM		
Project	PROPOSED PORTS CABIN ADJACENT TO N BLOCK		
Drawing	PORTA CABIN ELEVATIONS		
Date	Scale	Drawn by	Checked by
31/10/03	1/25	JB	

Project No	Drawing No	Revision
03732	L(0)01	